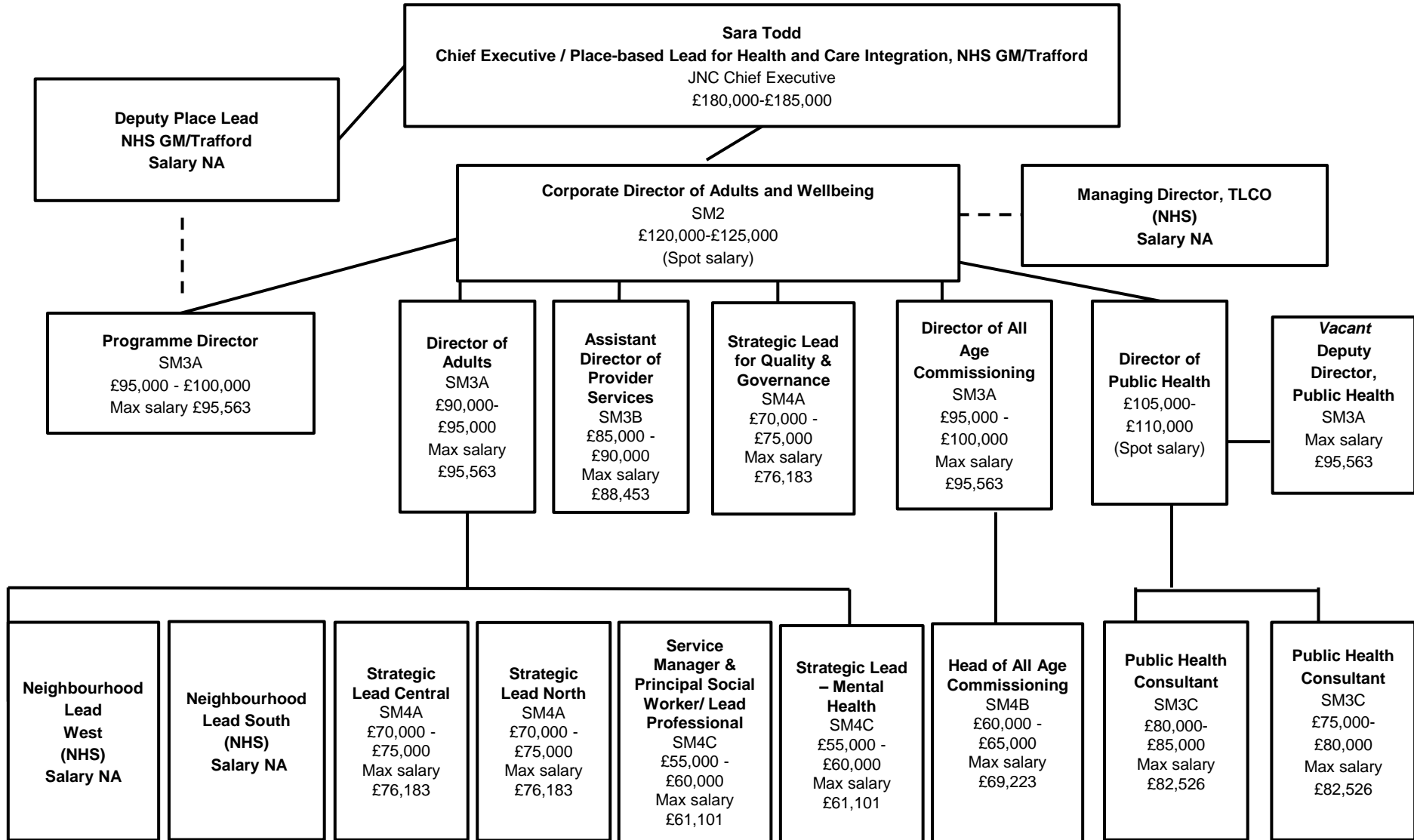


Adult Services



Children's Services

Sara Todd
Chief Executive / Place-based Lead for Health and Care Integration, NHS GM/Trafford
 JNC Chief Executive
 £180,000-£185,000

Corporate Director of Children's Services
 £130,000-£135,000 (Spot salary)

Director of Education Standards, Quality & Assurance
 SM3A
 £95,000 - £100,000
 Max salary £95,563

Strategic Lead Safeguarding
 (Agency)
 Salary NA

Strategic Lead Practice Improvement
 SM4A
 £75,000 - £80,000
 Max salary £76,183

Director Early Help and Children's Social Care
 SM3A
 £90,000 - £95,000
 Max salary £95,563

Vacant School Improvement Advisor – Primary
 Soulbury Educational Professionals

School Improvement Advisor – Secondary
 Soulbury Educational Professionals
 £60,000- £65,000

Virtual School Head
 Soulbury Educational Professionals
 £60,000- £65,000

Principal Educational Psychologist
 Soulbury Senior & Principal Educational Psychologists
 £60,000 - £65,000

Head of Education Places, Access and Vulnerable Children
 SM4C
 £60,000 - £65,000
 Max salary £61,101

Lead for SEND and Inclusion
 Soulbury Educational Professionals
 £60,000- £65,000

Head of Early Years & Family Help
 SM4C
 £55,000 - £60,000
 Max salary £61,101

Head of Service, Provider Services
 SM4C - £55,000-£60,000
 Max salary £61,101

Head of Service, Cared 4 & Care Experienced Service
 SM4C - £60,000 - £65,000
 Max salary £61,101

Interim Head of Service Families First (Child in Need) Locality Service
 SM4C - £55,000 - £60,000
 Max salary £61,101

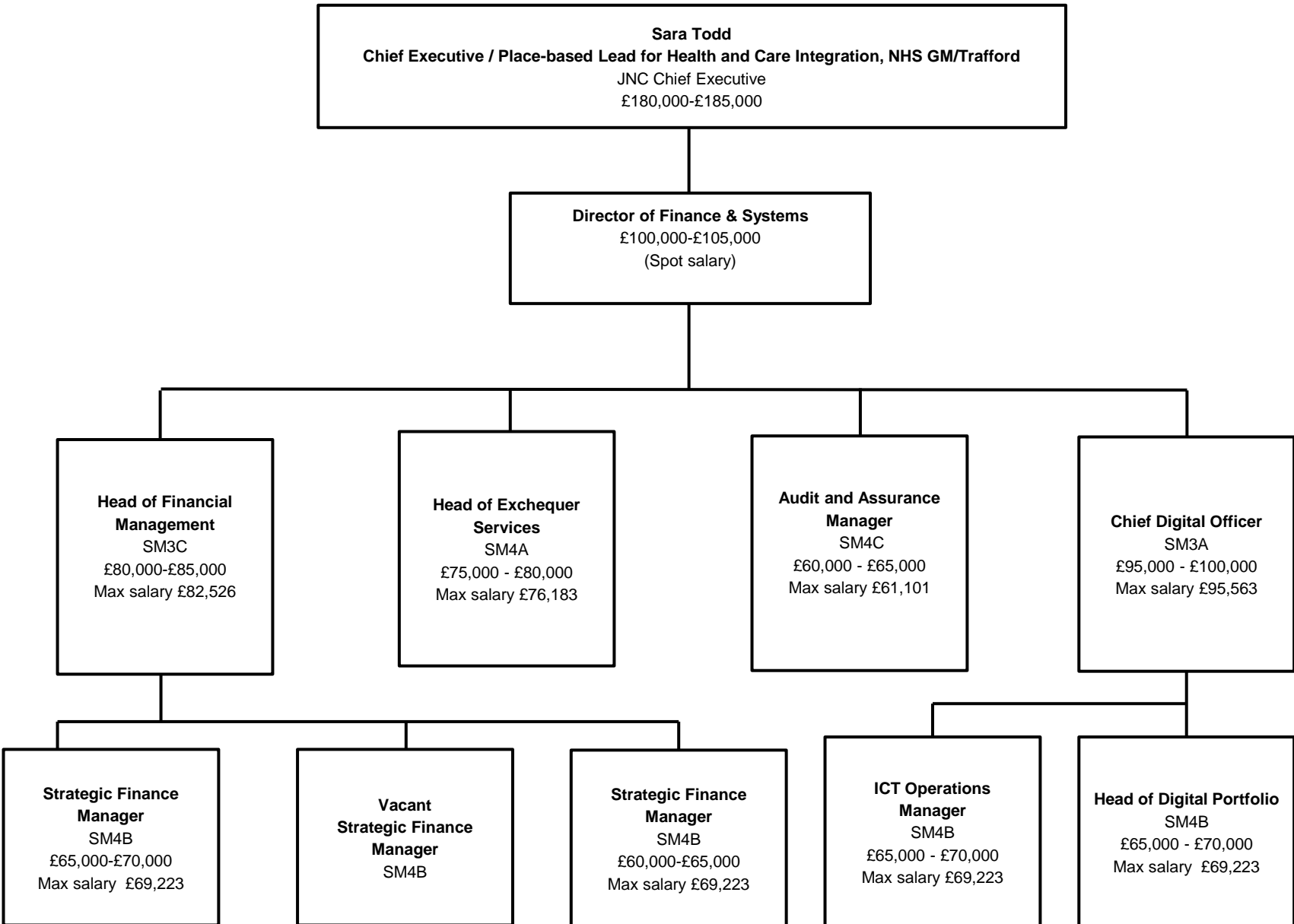
Designated Social Care Officer / Head of Service Children with Additional Needs
 (Agency)
 Salary NA

Interim Head of Service Early Help Locality Service and First Response
 SM4C - £55,000-£60,000
 Max salary £61,101

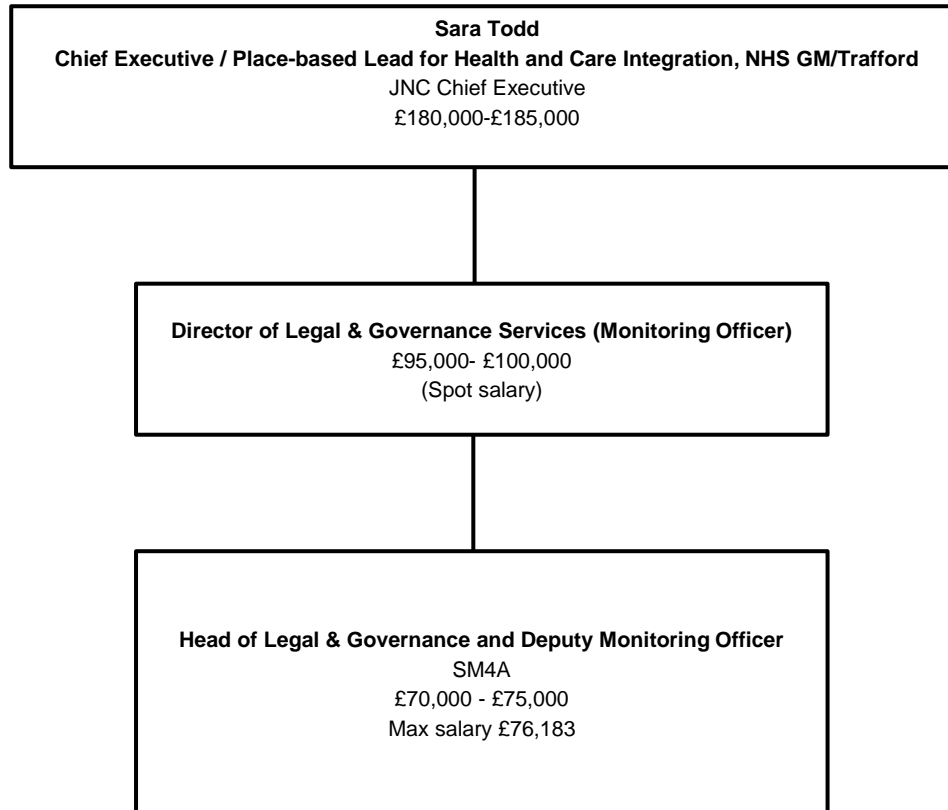
Head of Service Vulnerable Adolescent Service
 SM4C - £55,000 - £60,000
 Max salary £61,101

Head of Service Support and Protection Locality Service
 SM4C - £55,000-£60,000
 Max salary £61,101

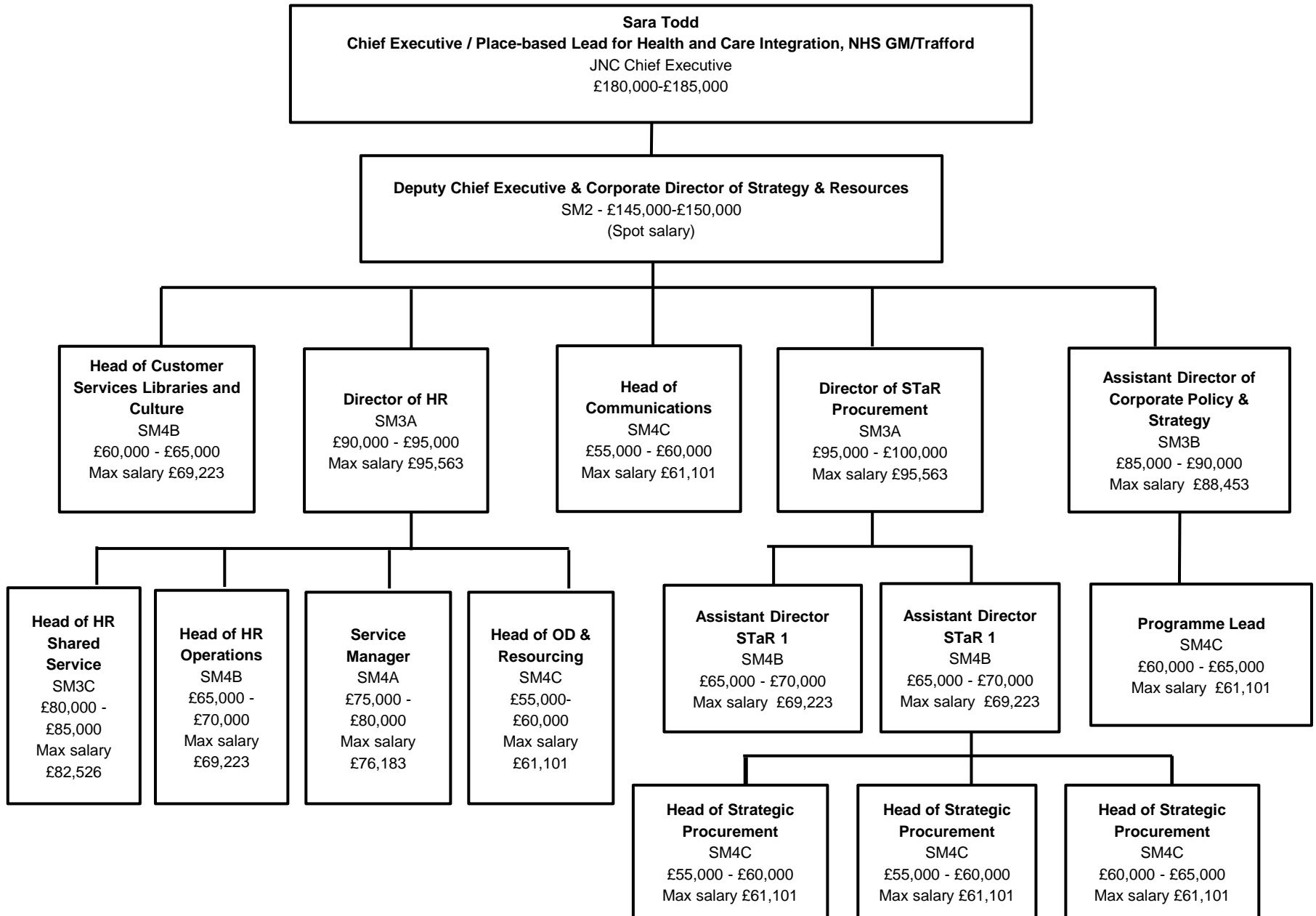
Finance and Systems



Legal & Governance



Strategy and Resources



Place

