

KEY

- Green coloured surfacing
- Redweld Greenwich Wand Orca 2500mm long x 175mm wide with two 800mm high x 80mm diameter rebound pole cones (wands)
- Redweld Greenwich Wand Orca 1500mm long x 175mm wide with one 800mm high x 80mm diameter rebound pole cone (wand)

Rev	Revision details	Chkd	Appd	Date
J	Changes to address comments from cycle forum members - incl orcas introduced in 1.75m cycle lane and reduced length orcas introduced next to parking bays	DI	--	13.07.17
H	Changes to Key	DI	--	03.07.17
G	Bus stop notes and drawing updated to convey orientation and construction information.	DI	--	16.06.17
F	Site boundary added, layout updated to proposed Traffic Restriction Orders and latest design.	DI	--	17.05.17
E	Layout updated to reflect detailed design and latest comments. Light segregation changed to wand orca system.	DI	--	08.03.17
D	Light segregation changed to wand system, and provided at parking bays. Mandatory cycle lane at Cornbrook St. built-out discontinued. Bus stop arrangement at E. Union St. amended to improve sight lines.	DI	--	26.01.17
C	Bus stop notes amended to include bus stop reference numbers and some notes are reworded.	DI	--	16.12.16
B	Amendments made to reflect comments made in the site meeting on 21.11.2016.	DI	--	24.11.16
A	Armadillos, cycle marking & green surface hatch now shown. Drawing number updated to reflect standards - previous number CO00201013-101.	DI	--	16.11.16

Rev	Revision details	Chkd	Appd	Date
Designed:	DI			14/11/2016
Drawn:	AL			14/11/2016
Checked:	DI			14/11/2016
Approved:	GR			14/11/2016



Client
ONE TRAFFORD

Project Name
Stretford Cycleway (Construction)

Drawing Title
Stretford Road Proposed General Arrangement Sheet 1 of 4

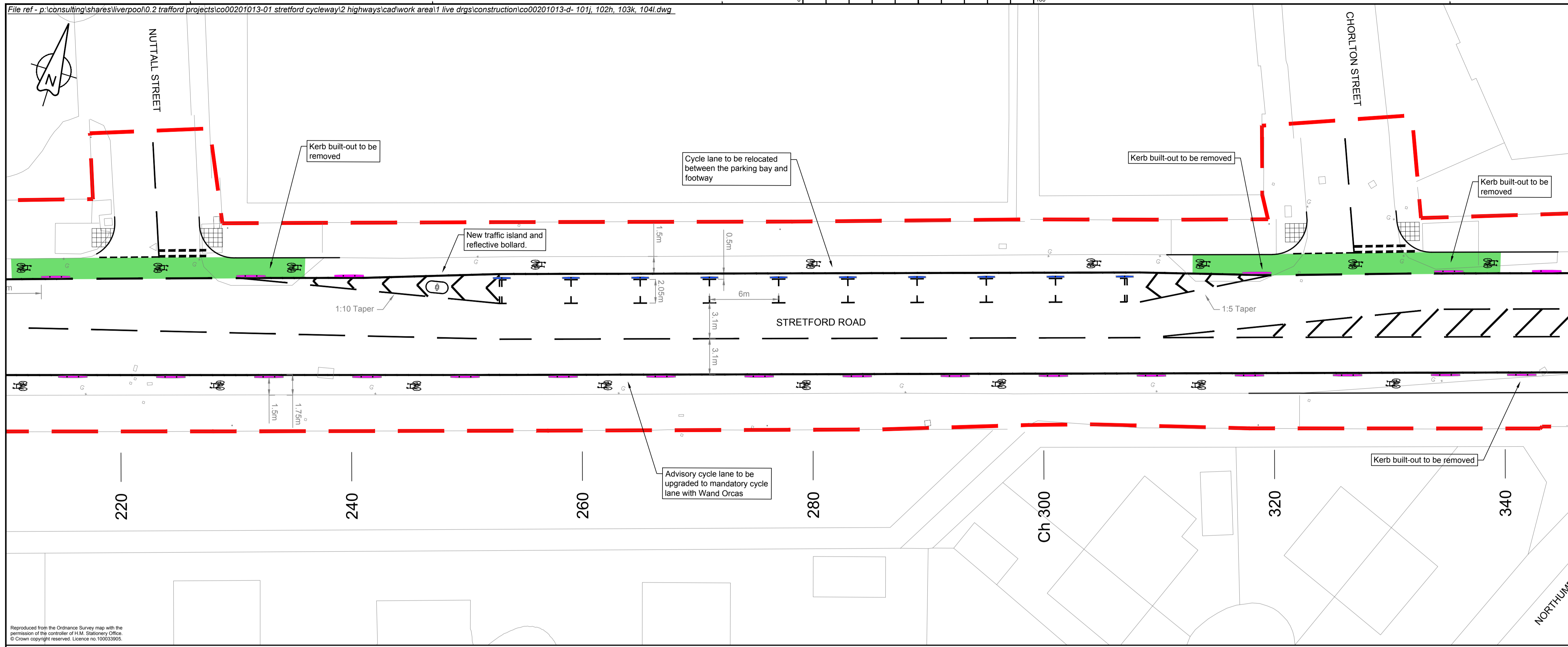
Original Drawing Size : A1	Scale : 1:200
Dimensions : -	

Drawing Status	Suitability
Construction	I

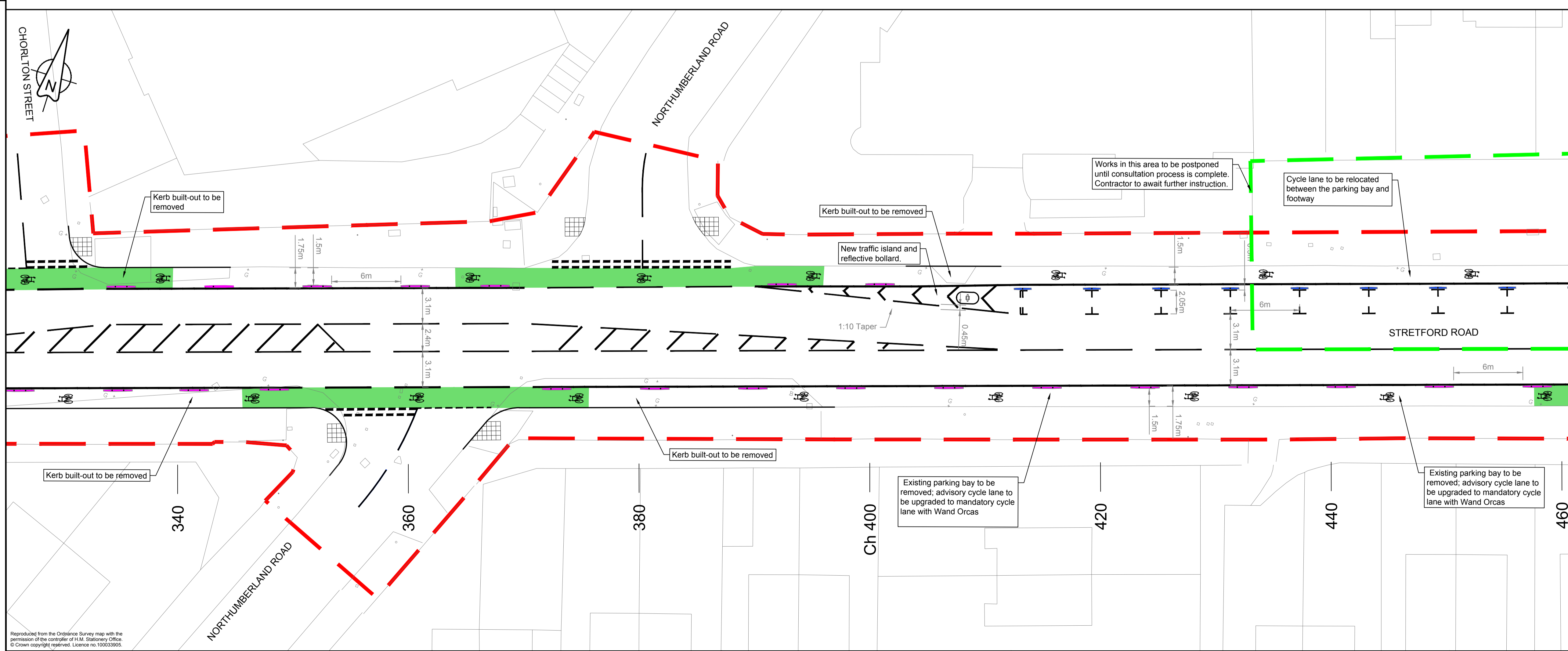
Drawing No	Rev
CO00201013-Cn-101	J

Reproduced from the Ordnance Survey map with the permission of the controller of H.M. Stationery Office. © Crown copyright reserved. Licence no. 100033905.

Reproduced from the Ordnance Survey map with the permission of the controller of H.M. Stationery Office. © Crown copyright reserved. Licence no. 100033905.



Reproduced from the Ordnance Survey map with the permission of the controller of H.M. Stationery Office. © Crown copyright reserved. Licence no. 100033905.



Reproduced from the Ordnance Survey map with the permission of the controller of H.M. Stationery Office. © Crown copyright reserved. Licence no. 100033905.

KEY

- █ Green coloured surfacing
- █ Redweld Greenwich Wand Orca 2500mm long x 175mm wide with two 800mm high x 80mm diameter rebound pole cones (wands)
- █ Redweld Greenwich Wand Orca 1500mm long x 175mm wide with one 800mm high x 80mm diameter rebound pole cone (wand)

Rev	Revision details	Chkd	Appd	Date
H	Changes to address comments from cycle forum members - incl orcas introduced in 1.75m cycle lane and reduced length orcas introduced next to parking bays	DI		13.07.17
G	Changes to Key	DI		03.07.17
F	Site boundary added, layout updated to proposed Traffic Restriction Orders and latest design.	DI		17.05.17
E	Layout updated to reflect detailed design and latest comments. Light segregation changed to wand orca system	DI		08.03.17
D	Light segregation changed to wand system, and provided at parking bays. Mandatory cycle lane at Cornbrook St. build-out discontinued. Bus stop arrangement at E. Union St. amended to improve sight lines.	DI		26.01.17
C	Amendments made to reflect comments made in the site meeting on 21.11.2016.	DI		24.11.16
B	Cycle lanes reduced to 1.50m along side parking bays, parking bay widths increased by 0.25m, traffic lane widths unaffected.	DI		17.11.16
A	Armadillos, cycle marking & green surface hatch now shown. Drawing number updated to reflect standards - previous number CO00201013-102.	DI		16.11.16

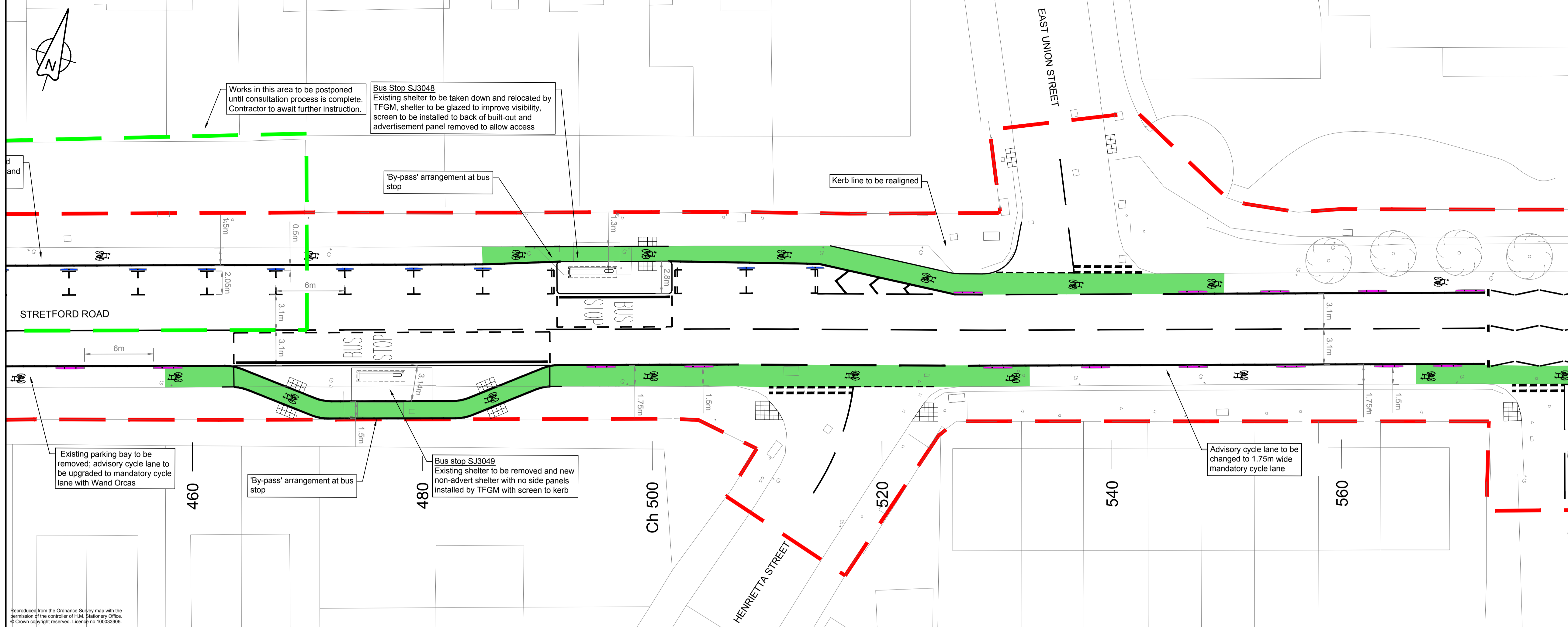
Rev	Revision details	Chkd	Appd	Date
Designed:	DI			14/11/2016
Drawn:	AL			14/11/2016
Checked:	DI			14/11/2016
Approved:	GR			14/11/2016



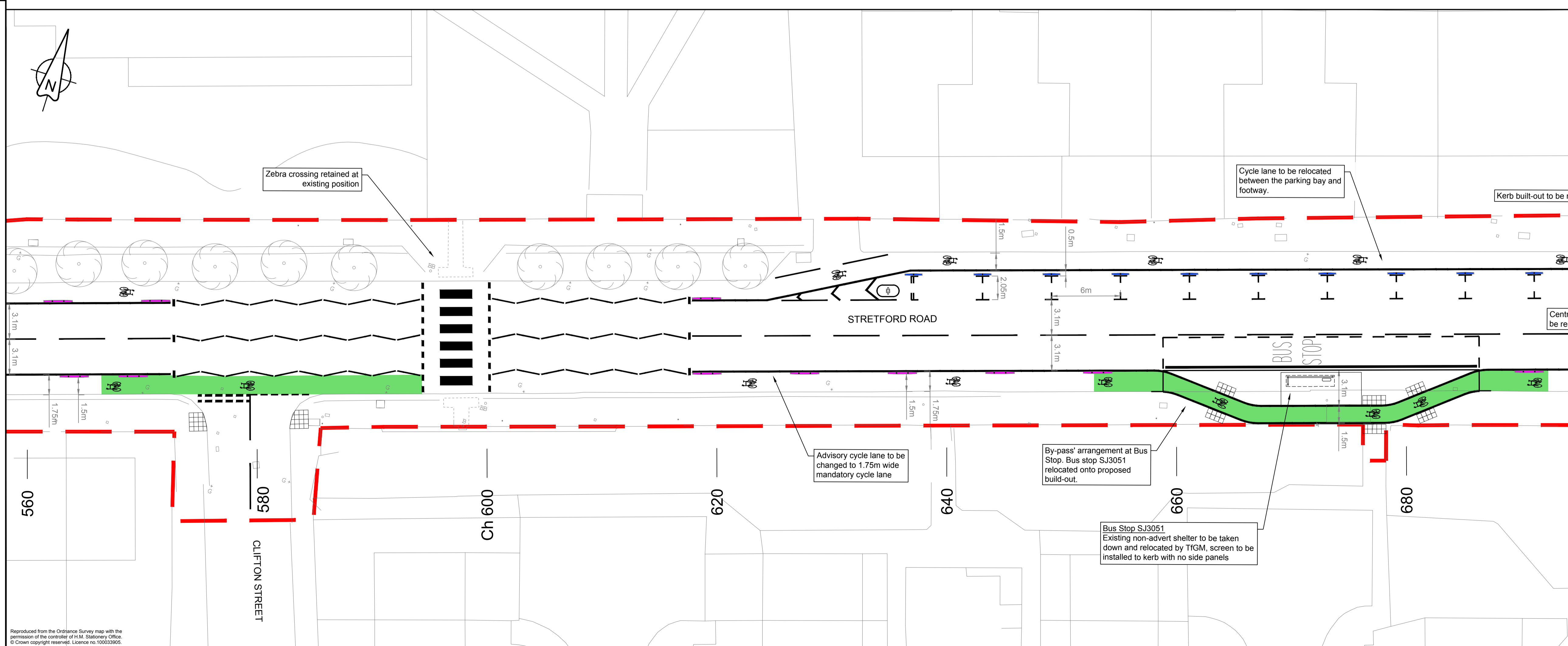
Project Name
Stretford Cycleway (Construction)

Drawing Title
Stretford Road Proposed General Arrangement Sheet 2 of 4

Original Drawing Size : A1	Scale : 1:200
Dimensions : -	
Drawing Status Construction	Suitability I
Drawing No CO00201013-Cn-102	Rev H



Reproduced from the Ordnance Survey map with the permission of the controller of H.M. Stationery Office. © Crown copyright reserved. Licence no. 100033905.



Reproduced from the Ordnance Survey map with the permission of the controller of H.M. Stationery Office. © Crown copyright reserved. Licence no. 100033905.

KEY

- Green coloured surfacing
- Redweld Greenwich Wand Orca 2500mm long x 175mm wide with two 800mm high x 80mm diameter rebound pole cones (wands)
- Redweld Greenwich Wand Orca 1500mm long x 175mm wide with one 800mm high x 80mm diameter rebound pole cone (wand)

Rev	Revision details	Chkd	Appd	Date
K	Changes to address comments from cycle forum members - incl orcas introduced in 1.75m cycle lane and reduced length orcas introduced next to parking bays	DI		13.07.17
J	Changes to Key	DI		03.07.17
H	Bus stop notes and drawing updated to convey orientation and construction information.	DI		16.06.17
G	Site boundary added, layout updated to proposed Traffic Restriction Orders and latest design.	DI		17.05.17
F	Layout updated to reflect detailed design and latest comments. Light segregation changed to wand orca system	DI		08.03.17
E	Light segregation changed to wand system, and provided at parking bays. Mandatory cycle lane at Combrook St. build-out discontinued. Bus stop arrangement at E. Union St. amended to improve sight lines.	DI		26.01.17
D	Bus stop notes amended to include bus stop reference numbers and some notes are reworded.	DI		16.12.16
C	Amendments made to reflect comments made in the site meeting on 21.11.2016.	DI		24.11.16
B	Cycle lanes reduced to 1.50m along side parking bays, parking bay widths increased by 0.25m, traffic lane widths unaffected.	DI		17.11.16
A	Cycle marking & green surface hatch now shown. Drawing number updated to reflect standards - previous number CO00201013-103.	DI		16.11.16

Rev	Revision details	Chkd	Appd	Date
Designed:	DI			14/11/2016
Drawn:	AL			14/11/2016
Checked:	DI			14/11/2016
Approved:	GR			14/11/2016



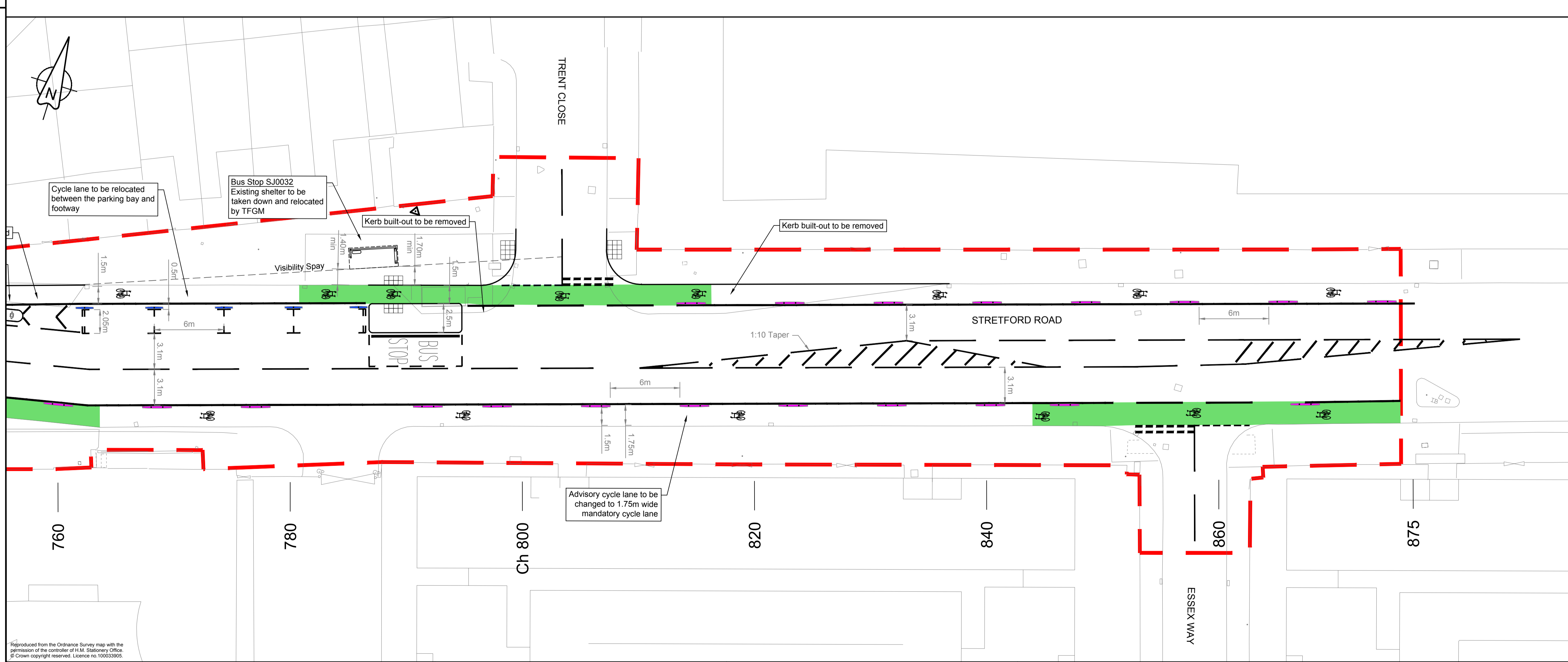
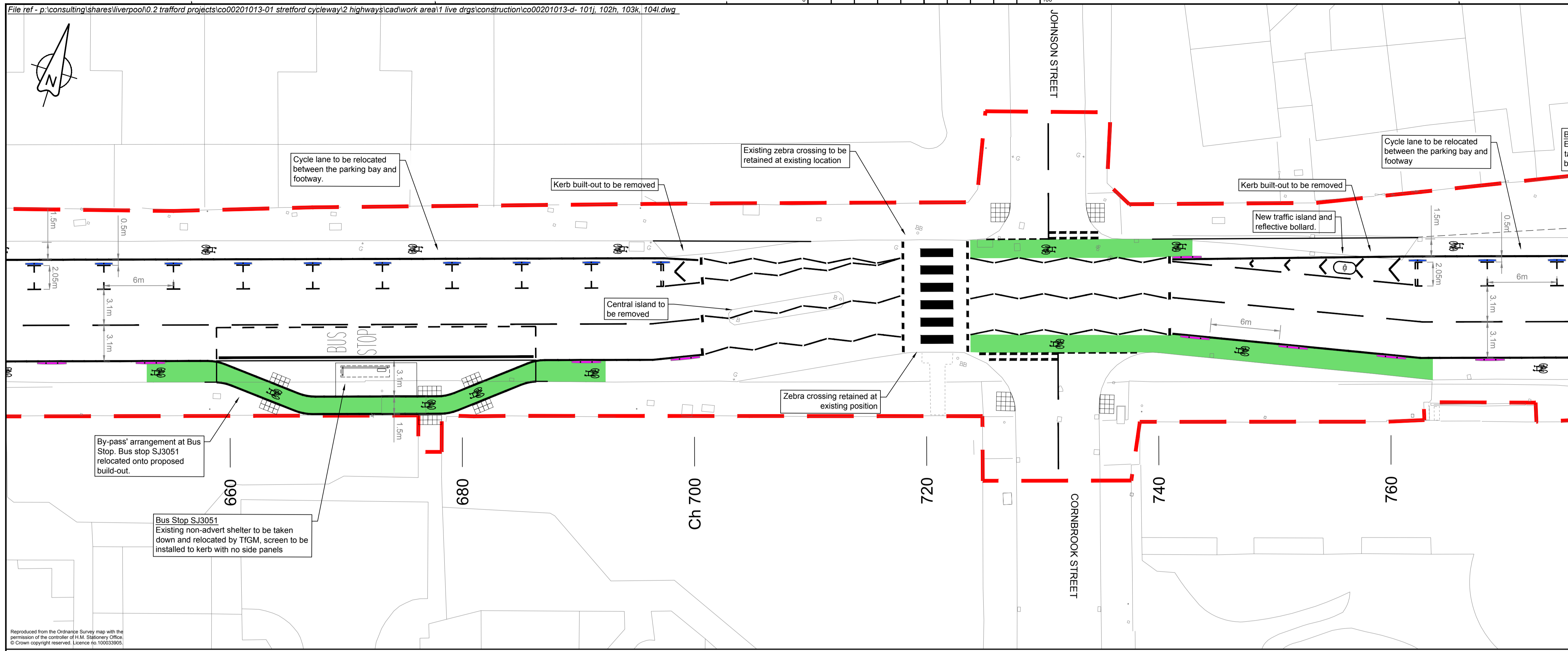
Project Name
Stretford Cycleway (Construction)

Drawing Title
Stretford Road Proposed General Arrangement Sheet 3 of 4

Original Drawing Size : A1 Scale : 1:200
Dimensions : -

Drawing Status Suitability
Construction I

Drawing No Rev
CO00201013-Cn-103 K



KEY

- Green coloured surfacing
- Redweld Greenwich Wand Orca 2500mm long x 175mm wide with two 800mm high x 80mm diameter rebound pole cones (wands)
- Redweld Greenwich Wand Orca 1500mm long x 175mm wide with one 800mm high x 80mm diameter rebound pole cone (wand)

Rev	Revision details	Chkd	Appd	Date
M	Hatching of Road markings altered	DI	--	19.03.18
L	Updated to tie in to works at east boundary.	DI	--	NYI
K	Changes to address comments from cycle forum members - incl orcas introduced in 1.75m cycle lane and reduced length orcas introduced next to parking bays	DI	--	13.07.17
J	Changes to Key	DI	--	03.07.17
H	Bus stop notes and drawing updated to convey orientation and construction information.	DI	--	16.06.17
G	Site boundary added, layout updated to proposed Traffic Restriction Orders and latest design.	DI	--	17.05.17
F	Layout updated to reflect detailed design and latest comments. Light segregation changed to wand orca system	DI	--	08.03.17
E	Light segregation changed to wand system, and provided at parking bays. Mandatory cycle lane at Cornbrook St. build-out discontinued. Bus stop arrangement at E. Union St. amended to improve sight lines.	DI	--	26.01.17
D	Bus stop notes amended to include bus stop reference numbers and some notes are reworded.	DI	--	16.12.16
C	Amendments made to reflect comments made in the site meeting on 21.11.2016.	DI	--	24.11.16
B	Cycle lanes reduced to 1.50m along side parking bays, parking bay widths increased by 0.25m, traffic lane widths unaffected.	DI	--	17.11.16
A	Armadillos, cycle marking & green surface hatch now shown. Drawing number updated to reflect standards - previous number CO00201013-104.	DI	--	16.11.16

Rev	Revision details	Chkd	Appd	Date
Designed:	DI			14/11/2016
Drawn:	AL			14/11/2016
Checked:	DI			14/11/2016
Approved:	GR			14/11/2016



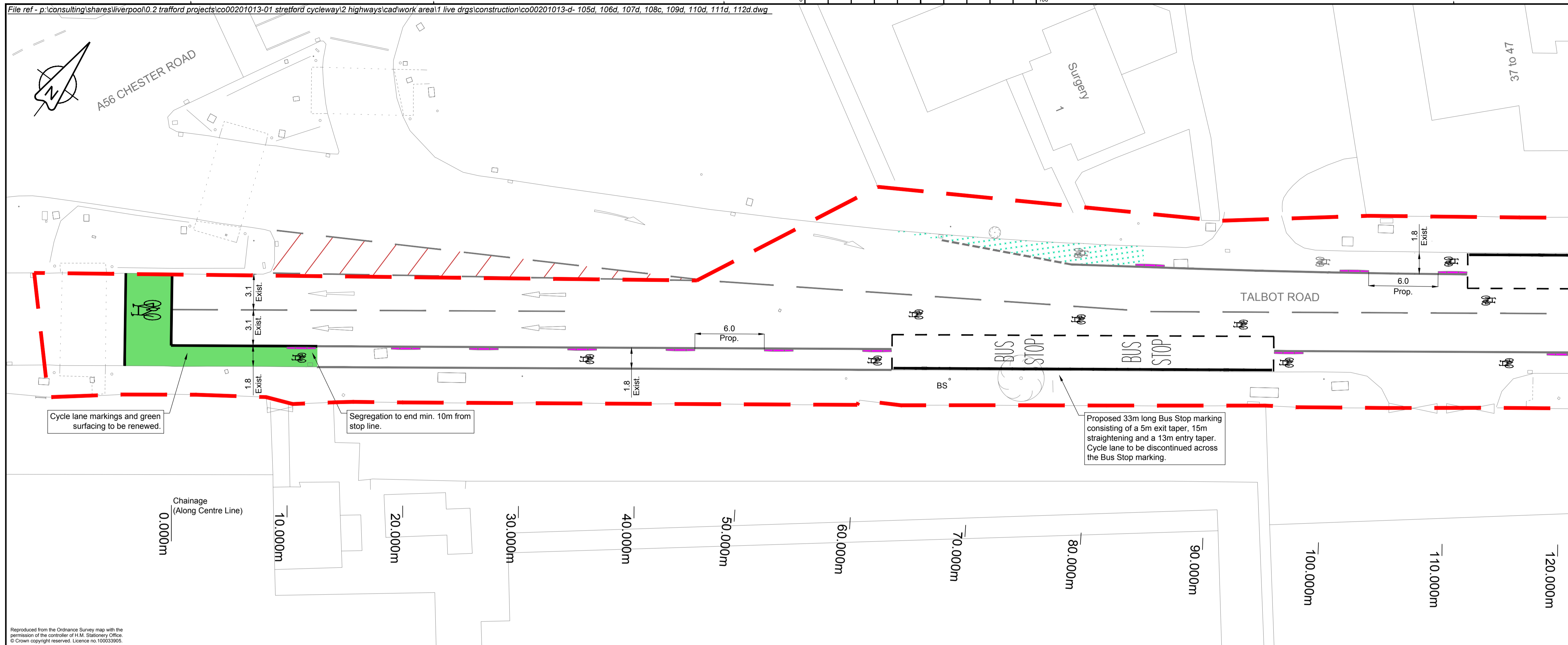
Project Name
Stretford Cycleway (Construction)

Drawing Title
Stretford Road Proposed General Arrangement Sheet 4 of 4

Original Drawing Size : A1 Scale : 1:200
Dimensions : -

Drawing Status
Construction Suitability
I

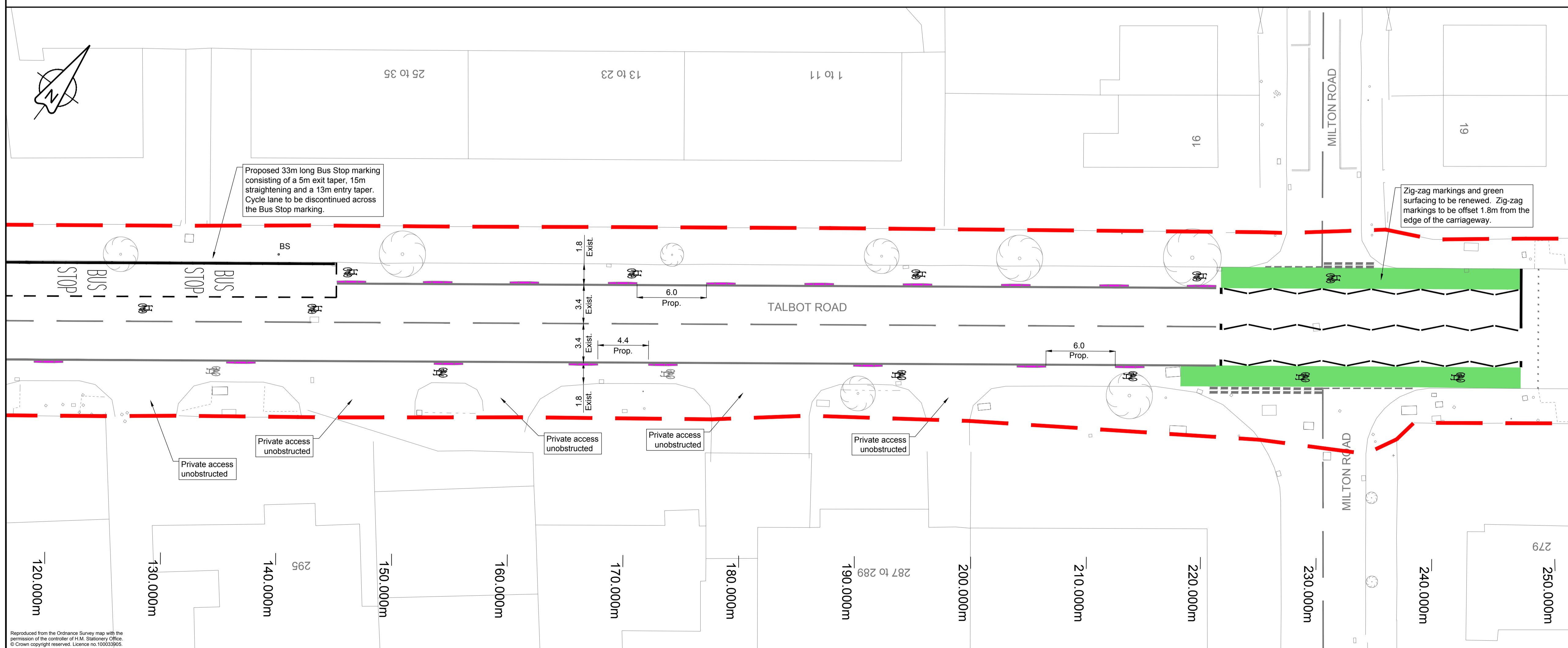
Drawing No
CO00201013-Cn-104 Rev
M



Reproduced from the Ordnance Survey map with the permission of the controller of H.M. Stationery Office. © Crown copyright reserved. Licence no. 100033905.

KEY

- Proposed green coloured surfacing
- Existing green coloured surfacing to be retained
- Redweld Greenwich Wand Orca 2500mm long x 175mm wide with 800mm high x 80mm diameter rebound pole cones (wands)
- Redweld Greenwich Wand Orca 2500mm long x 175mm wide without rebound pole cones (wands)



Reproduced from the Ordnance Survey map with the permission of the controller of H.M. Stationery Office. © Crown copyright reserved. Licence no. 100033905.

Rev	Revision details	Chkd	Appd	Date
D	Wands changed to 800mm high	DI	-	03.07.17
C	Drawing updated to show latest changes to Orca layout.	DI	NF	24.05.17
B	Site boundary and additional cycle symbols added.	DI	-	17.05.17
A	Issued for comment	DI	-	Jan 17

Designed:	DI	Date:	Jan 2017
Drawn:	AL	Date:	Jan 2017
Checked:	DI	Date:	Jan 2017
Approved:	NF	Date:	May 17



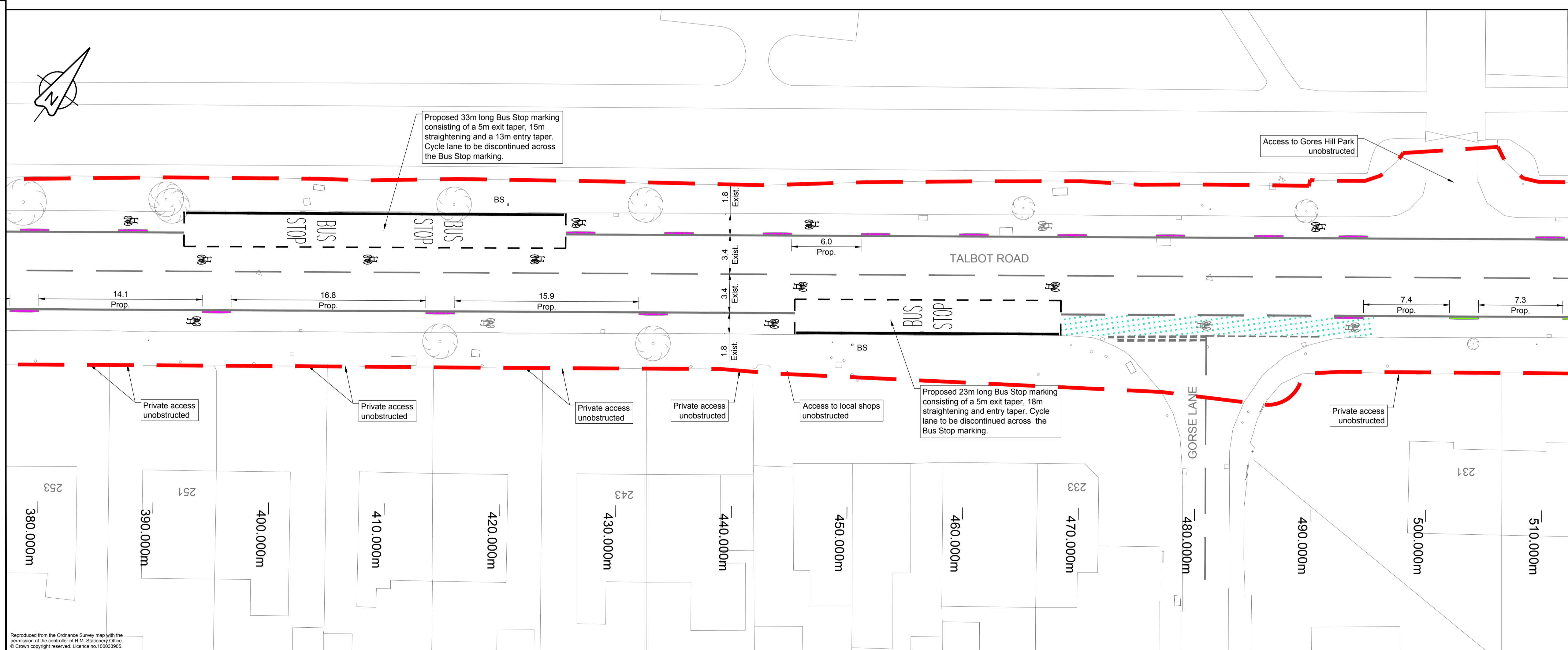
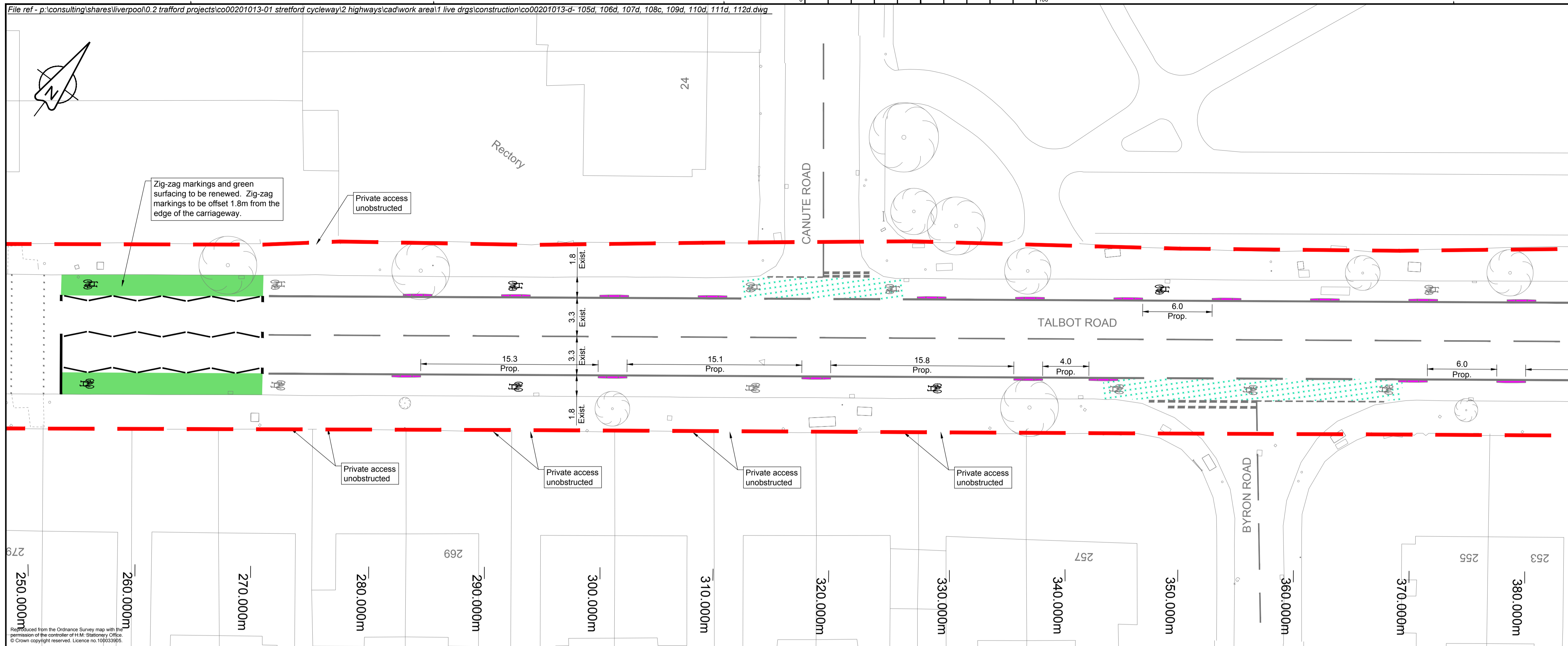
Project Name
Stretford Cycleway (Construction)

Drawing Title
Talbot Road Proposed General Arrangement Sheet 1 of 8

Original Drawing Size : A1 Scale : 1:200
Dimensions : -

Drawing Status
Construction Suitability
I

Drawing No
CO0201013-Cn-105 Rev
D



KEY

- Proposed green coloured surfacing
- Existing green coloured surfacing to be retained
- Redweld Greenwich Wand Orca 2500mm long x 175mm wide with 800mm high x 80mm diameter rebound pole cones (wands)
- Redweld Greenwich Wand Orca 2500mm long x 175mm wide without rebound pole cones (wands)

Rev	Revision details	Chkd	Appd	Date
D	Wands changed to 800mm high	DI	-	03.07.17
C	Drawing updated to show latest changes to Orca layout.	DI	NF	24.05.17
B	Site boundary and additional cycle symbols added.	DI	-	17.05.17
A	Issued for comment	DI	-	Jan 17

Designed:	DI	Date:	Jan 17
Drawn:	AL	Date:	Jan 17
Checked:	DI	Date:	Jan 17
Approved:	NF	Date:	May 17



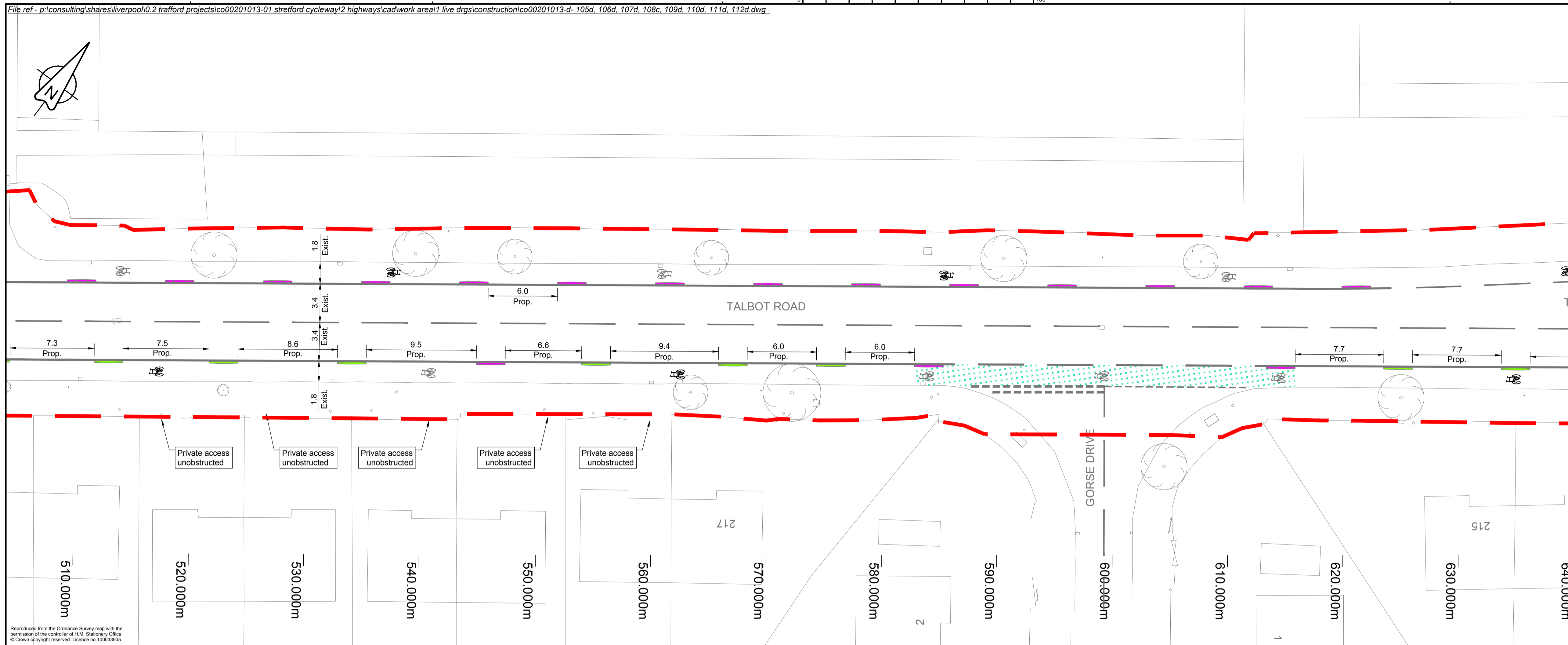
Project Name
Stretford Cycleway (Construction)

Drawing Title
Talbot Road Proposed General Arrangement Sheet 2 of 8

Original Drawing Size : A1 Scale : 1:200
Dimensions : -

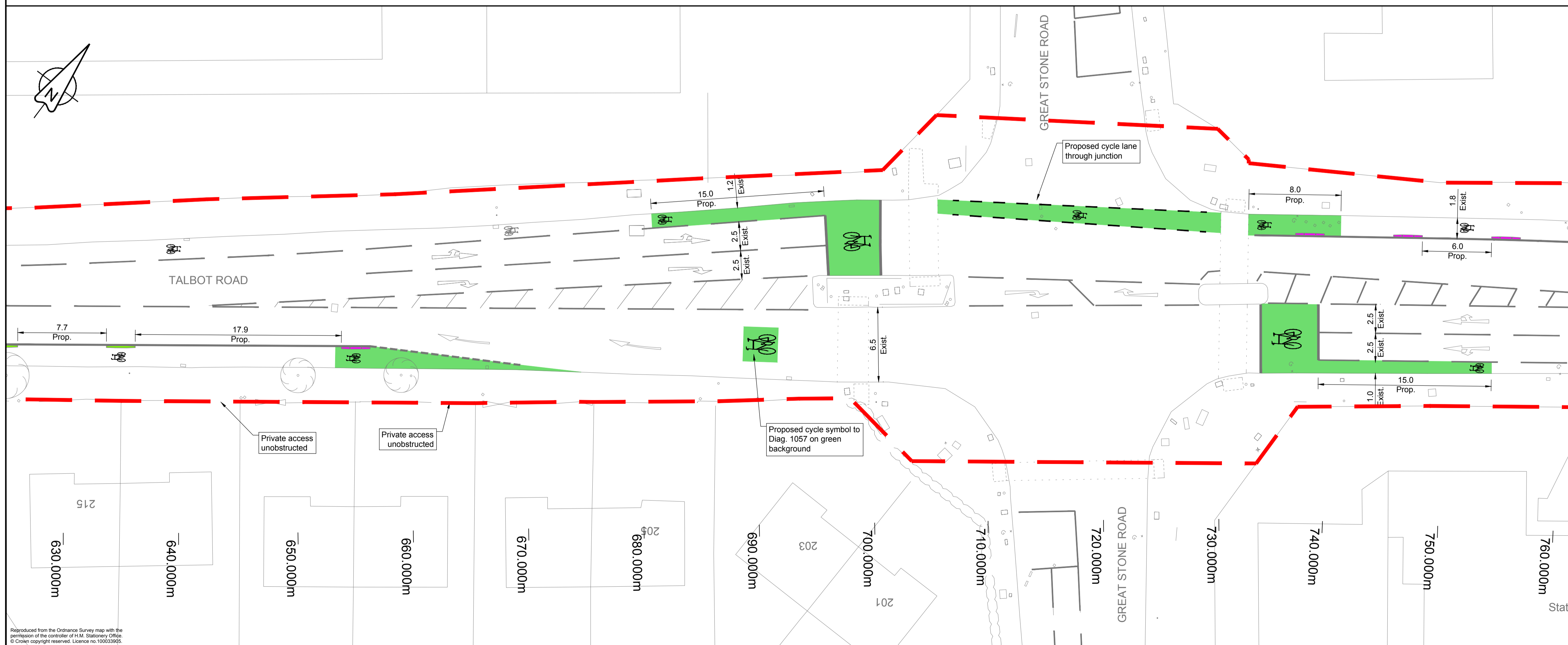
Drawing Status
Construction Suitability
I

Drawing No
CO0201013-Cn-106 Rev
D

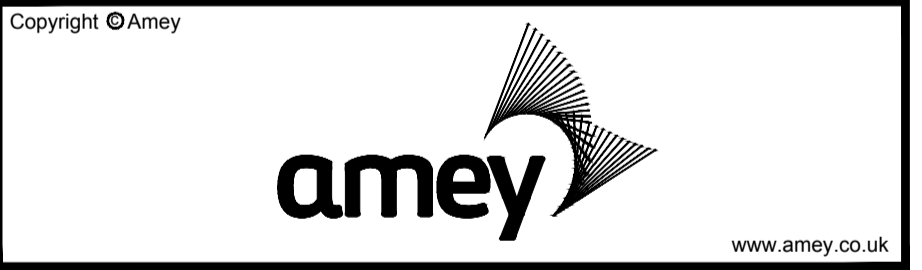


KEY

- Proposed green coloured surfacing
- Existing green coloured surfacing to be retained
- Redweld Greenwich Wand Orca 2500mm long x 175mm wide with 800mm high x 80mm diameter rebound pole cones (wands)
- Redweld Greenwich Wand Orca 2500mm long x 175mm wide without rebound pole cones (wands)



Rev	Revision details	Chkd	Appd	Date
D	Wands changed to 800mm high	DI	-	03.07.17
C	Drawing updated to show latest changes to Orca layout.	DI	NF	24.05.17
B	Site boundary and additional cycle symbols added.	DI	-	17.05.17
A	Issued for comment	DI	-	Jan 17



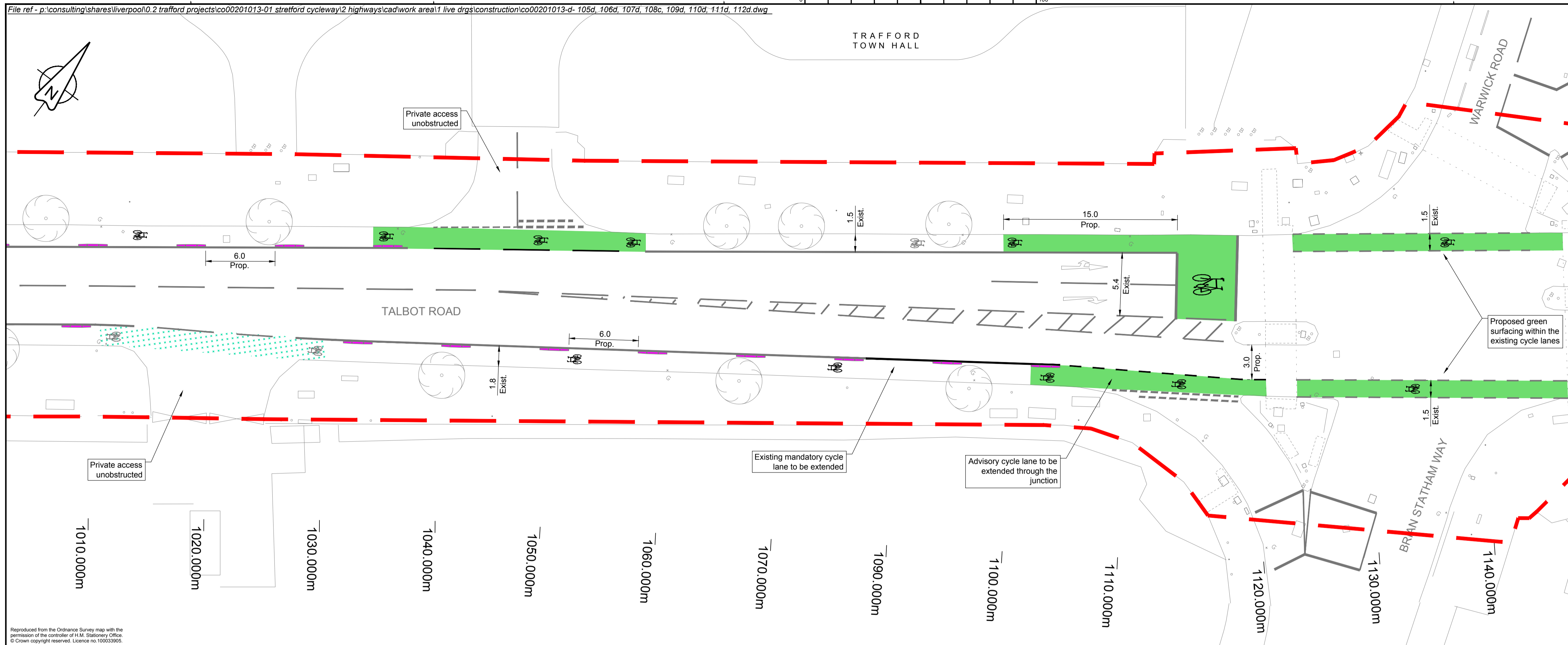
Project Name
Stretford Cycleway (Construction)

Drawing Title
Talbot Road Proposed General Arrangement Sheet 3 of 8

Original Drawing Size : A1 Scale : 1:200
Dimensions : -

Drawing Status
Construction Suitability
I

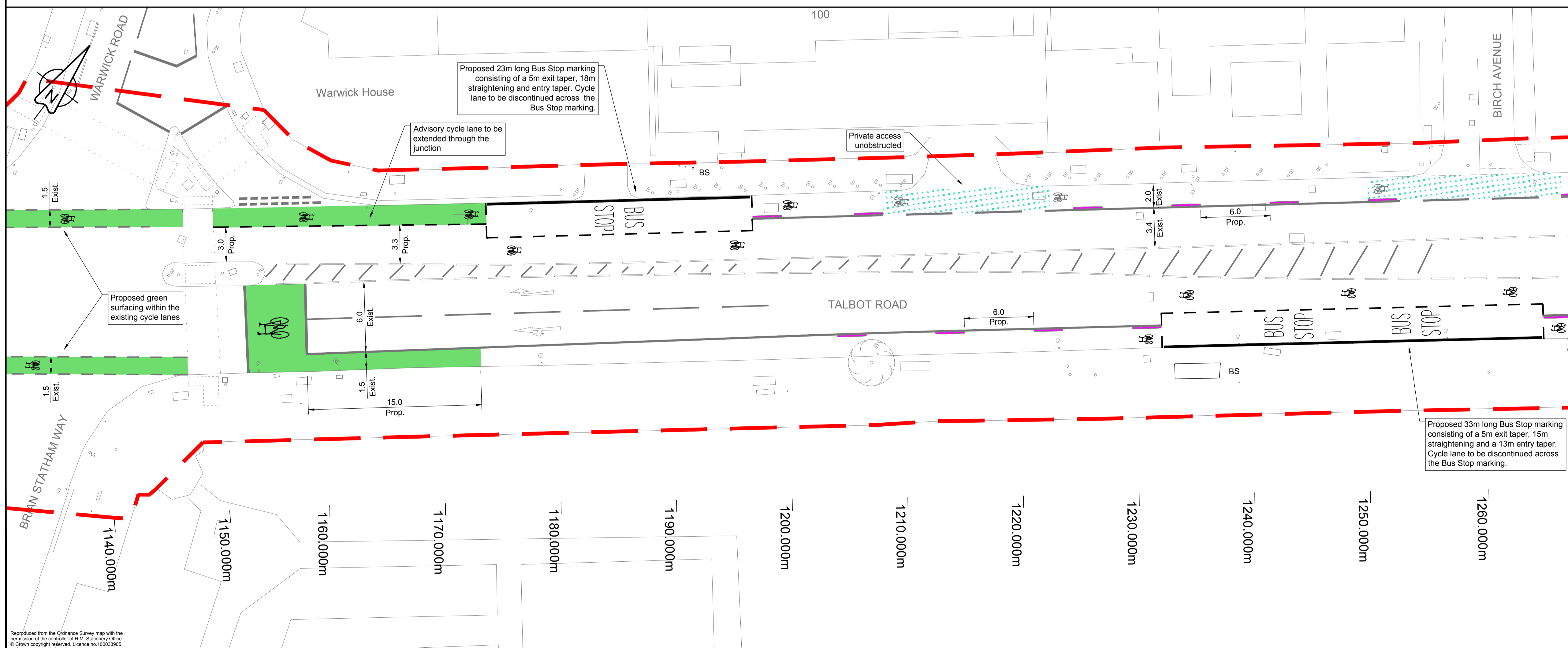
Drawing No
CO0201013-Cn-107 Rev
D



Reproduced from the Ordnance Survey map with the permission of the controller of H.M. Stationery Office. © Crown copyright reserved. Licence no. 100033905.

KEY

- Proposed green coloured surfacing
- Existing green coloured surfacing to be retained
- Redweld Greenwich Wand Orca 2500mm long x 175mm wide with 800mm high x 80mm diameter rebound pole cones (wands)
- Redweld Greenwich Wand Orca 2500mm long x 175mm wide without rebound pole cones (wands)



Reproduced from the Ordnance Survey map with the permission of the controller of H.M. Stationery Office. © Crown copyright reserved. Licence no. 100033905.

Rev	Revision details	Chkd	Appd	Date
D	Wands changed to 800mm high	DI	-	03.07.17
C	Drawing updated to show latest changes to Orca layout.	DI	NF	24.05.17
B	Site boundary and additional cycle symbols added.	DI	-	17.05.17
A	Issued for comment	DI	-	Jan 17

Designed:	DI	Date:	Jan 17
Drawn:	AL	Date:	Jan 17
Checked:	DI	Date:	Jan 17
Approved:	NF	Date:	May 17



Project Name
Stretford Cycleway (Construction)

Drawing Title
Talbot Road Proposed General Arrangement Sheet 5 of 8

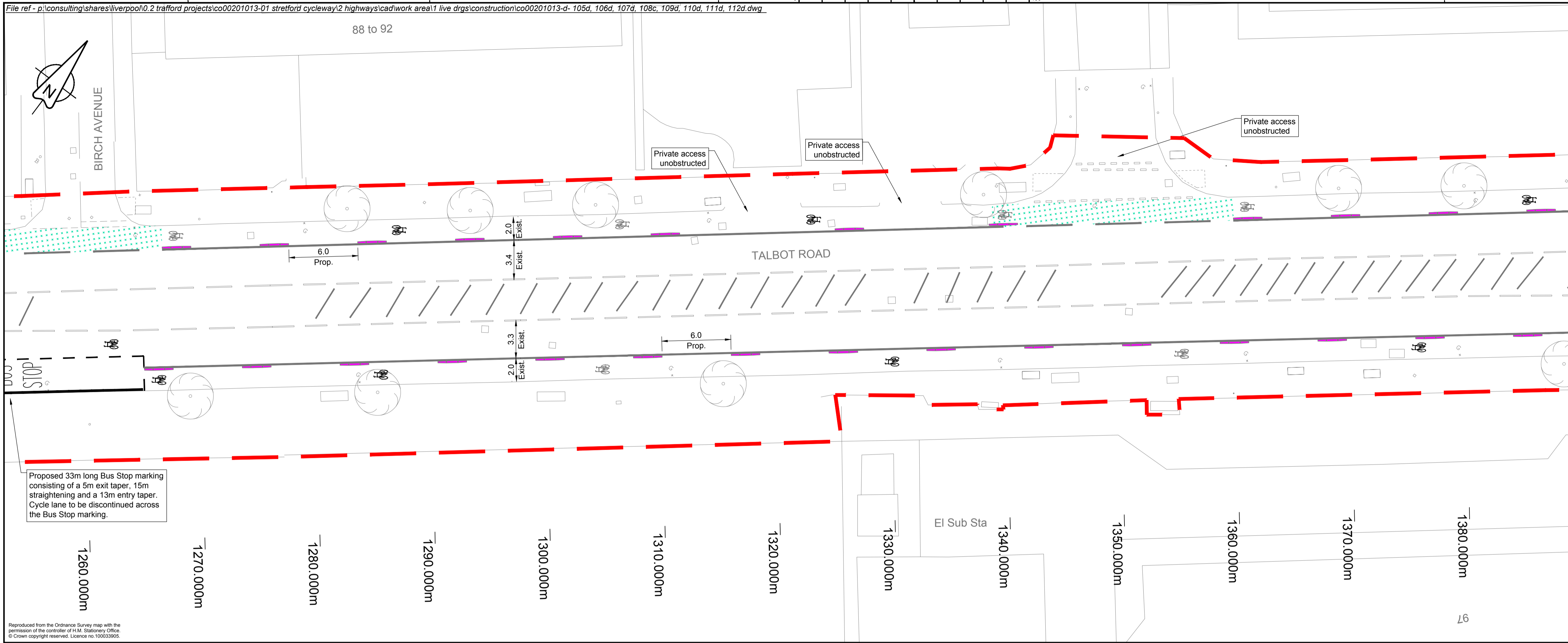
Original Drawing Size : A1 Scale : 1:200
Dimensions : -

Drawing Status
Construction

Suitability
I

Drawing No
CO0201013-Cn-109

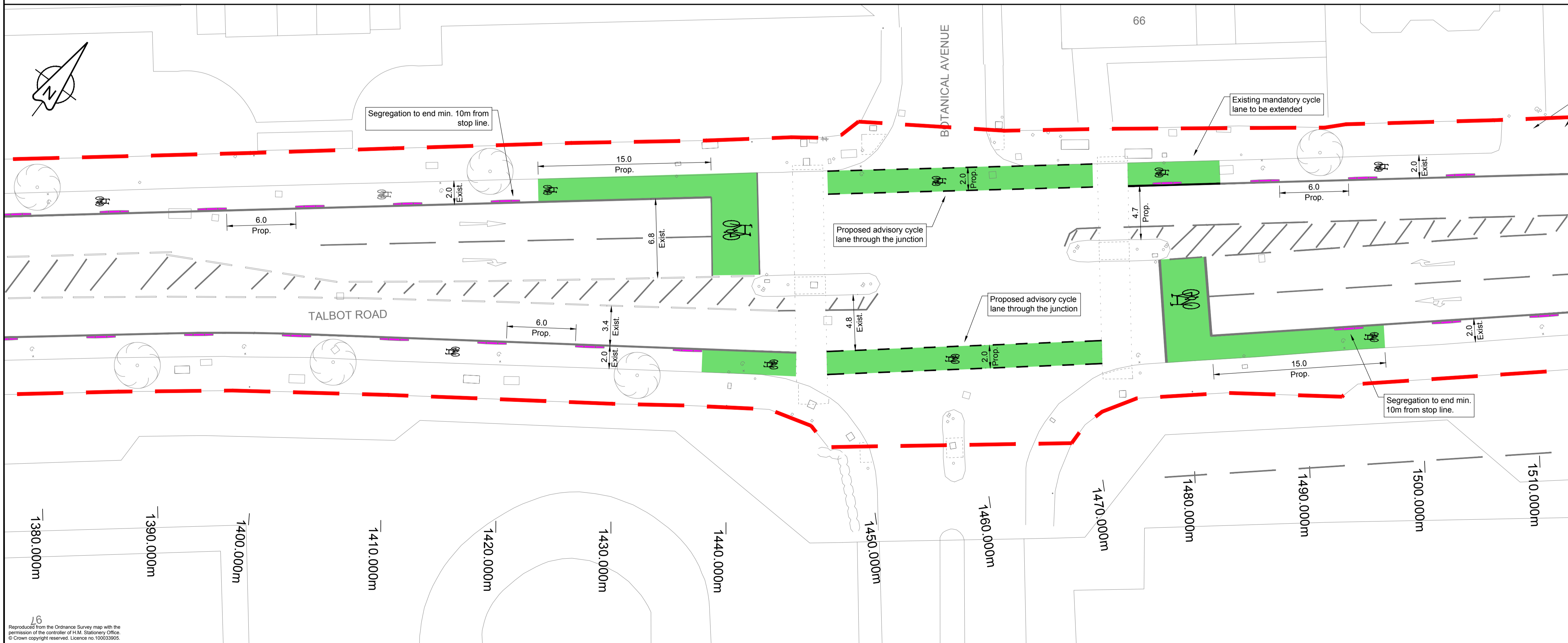
Rev
D



Reproduced from the Ordnance Survey map with the permission of the controller of H.M. Stationery Office. © Crown copyright reserved. Licence no. 100033905.

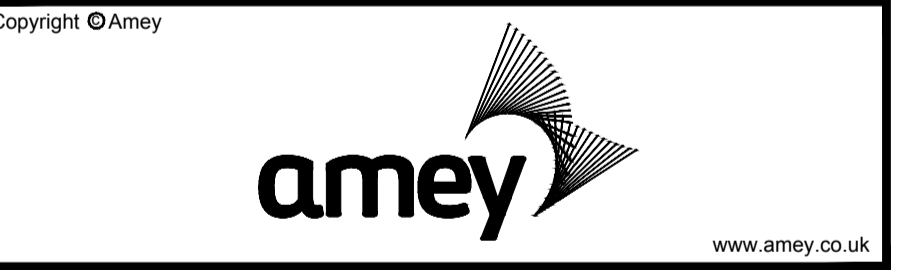
KEY

- Proposed green coloured surfacing
- Existing green coloured surfacing to be retained
- Redweld Greenwich Wand Orca 2500mm long x 175mm wide with 800mm high x 80mm diameter rebound pole cones (wands)
- Redweld Greenwich Wand Orca 2500mm long x 175mm wide without rebound pole cones (wands)



Reproduced from the Ordnance Survey map with the permission of the controller of H.M. Stationery Office. © Crown copyright reserved. Licence no. 100033905.

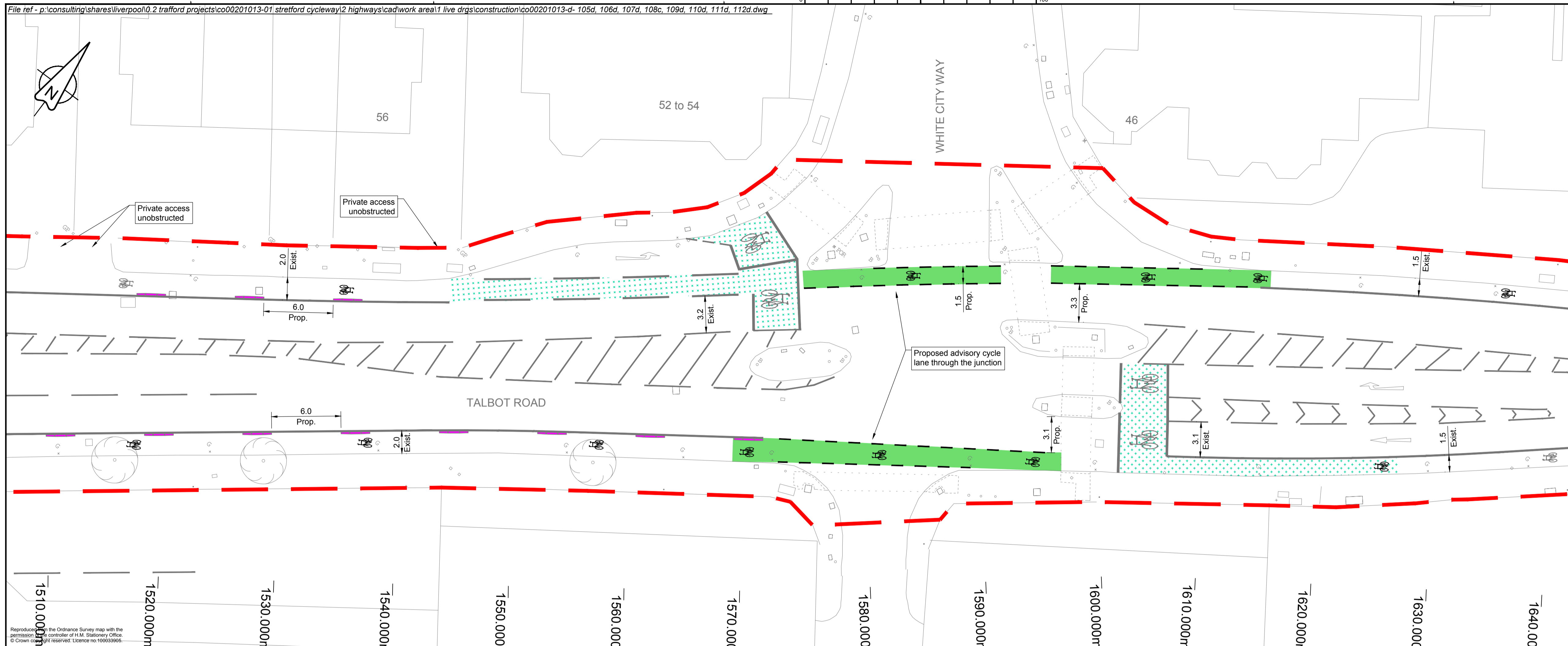
D	Wands changed to 800mm high	DI	-	03.07.17
C	Drawing updated to show latest changes to Orca layout.	DI	NF	24.05.17
B	Site boundary and additional cycle symbols added.	DI	-	17.05.17
A	Issued for comment	DI	-	Jan 17
Rev	Revision details	Chkd	Appd	Date
Designed:	DI			Date: Jan 17
Drawn:	AL			Date: Jan 17
Checked:	DI			Date: Jan 17
Approved:	NF			Date: Jan 17



Project Name
Stretford Cycleway (Construction)

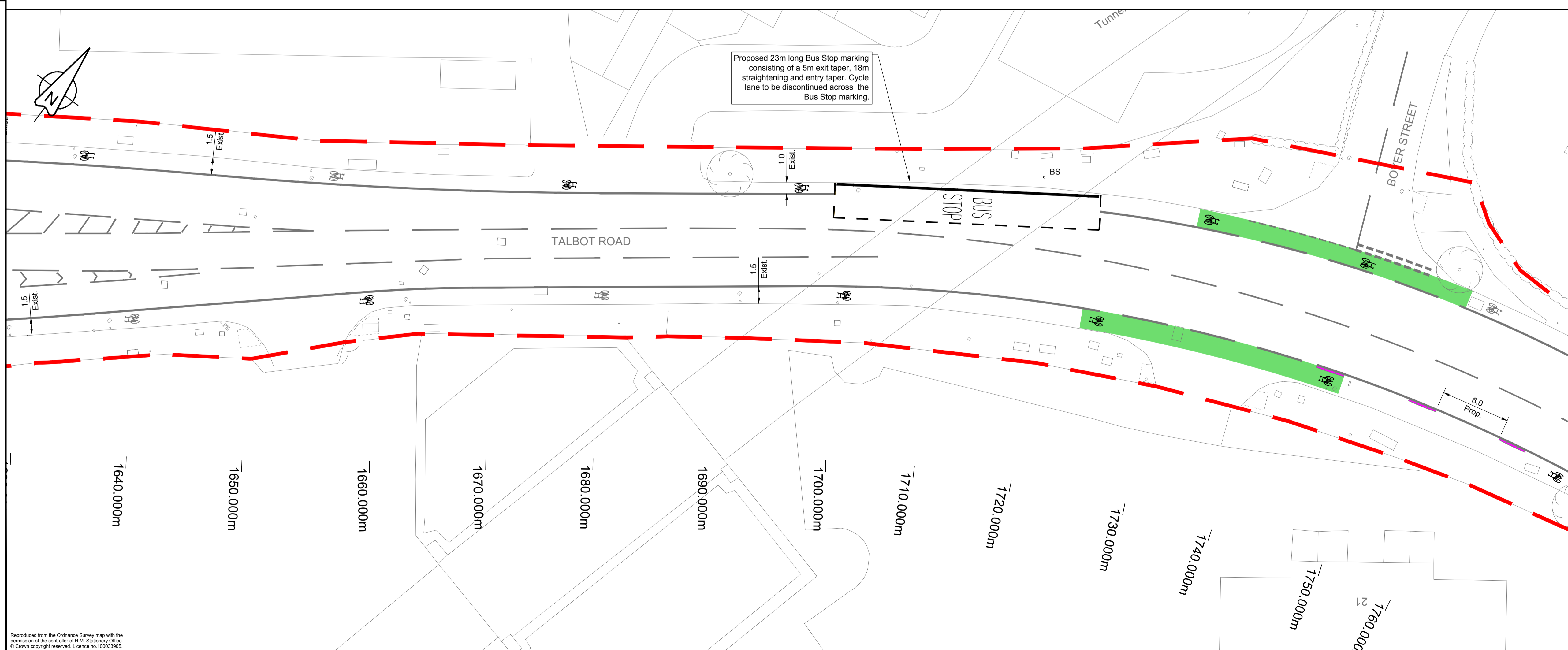
Drawing Title
Talbot Road Proposed General Arrangement Sheet 6 of 8

Original Drawing Size : A1	Scale : 1:200
Dimensions : -	
Drawing Status Construction	Suitability I
Drawing No CO0201013-Cn-110	Rev D

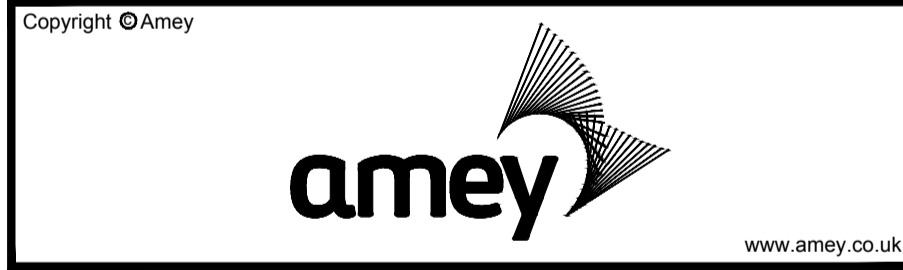


KEY

- Proposed green coloured surfacing
- Existing green coloured surfacing to be retained
- Redweld Greenweld Wand Orca 2500mm long x 175mm wide with 800mm high x 80mm diameter rebound pole cones (wands)
- Redweld Greenweld Wand Orca 2500mm long x 175mm wide without rebound pole cones (wands)



D	Wands changed to 800mm high	DI	-	03.07.17
C	Drawing updated to show latest changes to Orca layout.	DI	NF	24.05.17
B	Site boundary and additional cycle symbols added.	DI	-	17.05.17
A	Issued for comment	DI	-	Jan 17
Rev	Revision details	Chkd	Appd	Date
Designed:	DI			Date: Jan 17
Drawn:	AL			Date: Jan 17
Checked:	DI			Date: Jan 17
Approved:	NF			Date: May 17



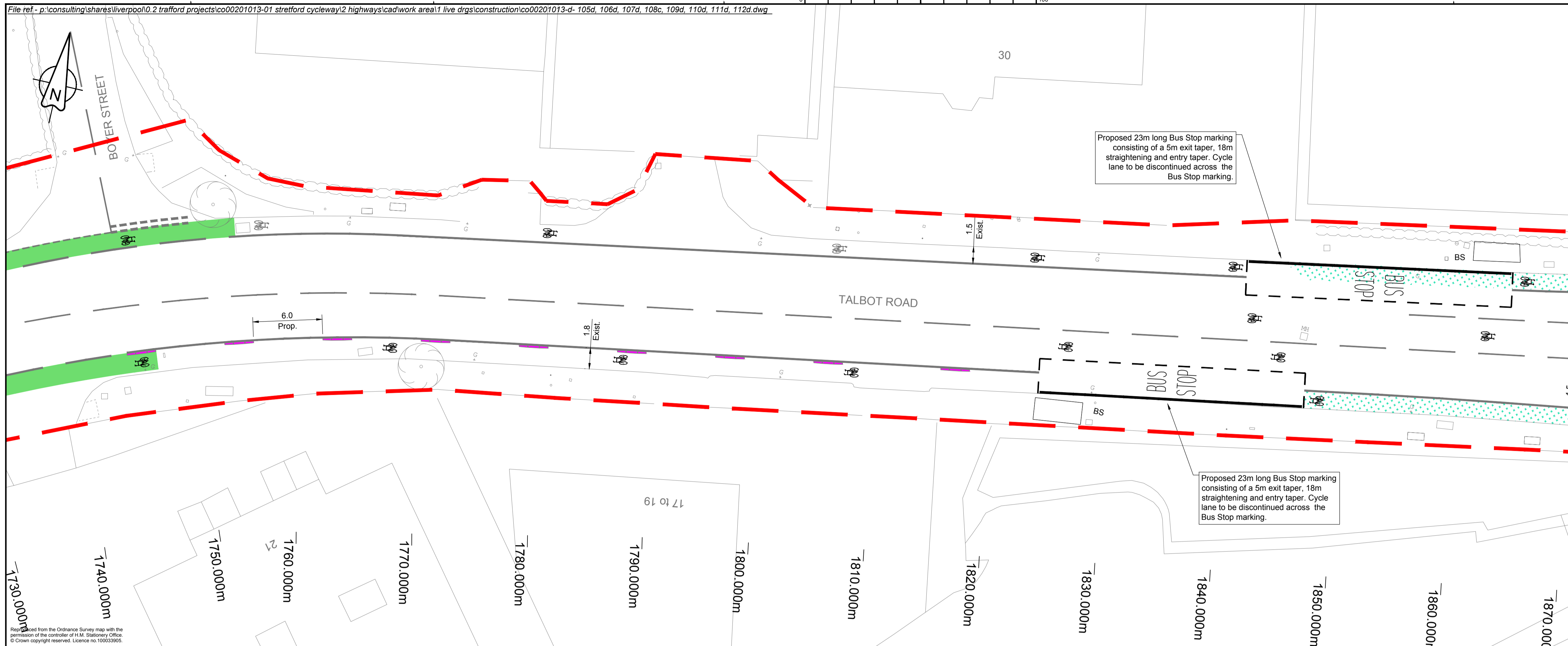
Project Name
Stretford Cycleway (Construction)

Drawing Title
Talbot Road Proposed General Arrangement Sheet 7 of 8

Original Drawing Size : A1 Scale : 1:200
Dimensions : -





Drawing Status
Construction

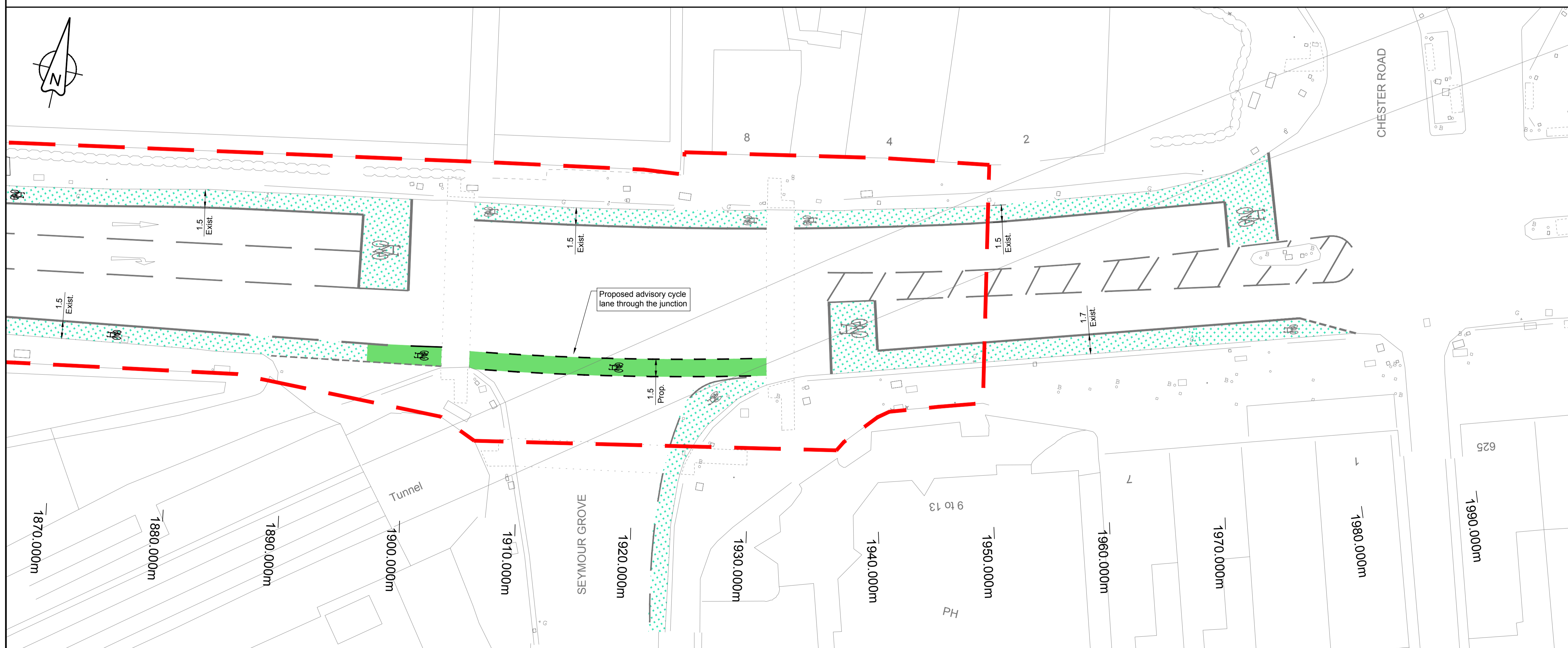
Drawing No
CO0201013-Cn-111



Reproduced from the Ordnance Survey map with the permission of the controller of H.M. Stationery Office. © Crown copyright reserved. Licence no. 100033905.

KEY

-  Proposed green coloured surfacing
-  Existing green coloured surfacing to be retained
-  Redweld Greenwich Wand Orca 2500mm long x 175mm wide with 800mm high x 80mm diameter rebound pole cones (wands)
-  Redweld Greenwich Wand Orca 2500mm long x 175mm wide without rebound pole cones (wands)



D	Wands changed to 800mm high	DI	-	03.07.17
C	Drawing updated to show latest changes to Orca layout.	DI	NF	24.05.17
B	Site boundary and additional cycle symbols added.	DI	-	17.05.17
A	Issued for comment	DI	-	Jan 17
Rev	Revision details	Chkd	Appd	Date
Designed:	DI			Date: Jan 17
Drawn:	AL			Date: Jan 17
Checked:	DI			Date: Jan 17
Approved:	NF			Date: May 17



Project Name
**Stretford Cycleway
(Construction)**

Drawing Title
**Talbot Road
Proposed General Arrangement
Sheet 8 of 8**

Original Drawing Size : A1 Scale : 1:200
Dimensions : -

Drawing Status
Construction Suitability
I

Drawing No
CO0201013-Cn-112 Rev
D