

Introduction



Made possible with

Heritage Fund

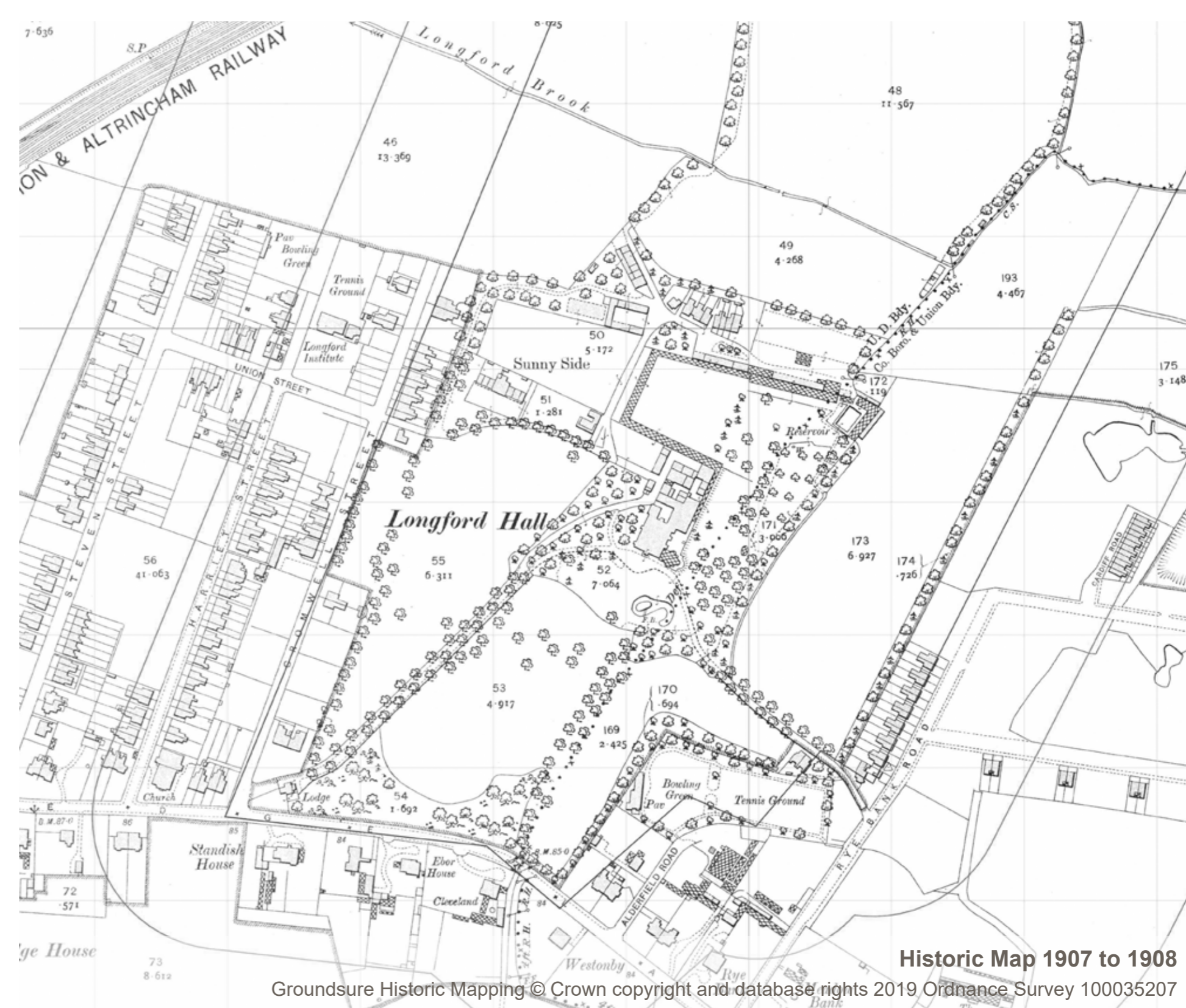


Longford Park: People, Place and Nature

Trafford Council have secured funding to develop a National Lottery Heritage Fund Delivery Phase bid, for Longford Park, Stretford.

Longford Park is a mid to late nineteenth century designed park landscape and the remaining built legacy of John and Enriqueta Rylands. The land was purchased by Stretford Urban District Council in 1911 from the Rylands Estate and was opened as a public park in 1912. Longford Park was designated as a Conservation Area in 1996, in recognition of the area's contribution to Stretford's social and cultural history in the 19th and 20th centuries.

The park is popular with the local and wider communities and was designated as a Borough Park in the Trafford Greenspace Strategy in recognition of its borough-wide significance. This project forms a part of the Council's Corporate Priorities including 'Green and Connected'; the reduction of health inequalities; the climate emergency; and place shaping agenda.



Works To Date and Next Steps

Trafford Council prepared a Development Phase National Lottery Heritage Fund application in 2019. As part of the Development Phase application, a series of public consultation events were held to consult new and existing audiences; as a tool to gather invaluable insights; and aspirations of how users and stakeholders will engage with the park and its heritage assets. Consultation responses influenced the initial Landscape Masterplan and Conservation Management Plan.

Trafford Council secured full permission to start from the National Lottery Heritage Fund in early 2021, with Development Phase funding to support progression to a Delivery Phase bid in 2022.

Following this consultation event, the development of supporting information for National Lottery Heritage Fund Delivery Phase application and Planning Application will continue; with a targeted submission later in the year.

Have Your Say

This public consultation will run for a **4 week** period between **28th May 2022 and 24th June 2022**. You can respond in one of the following ways;-

1. Leave your feedback forms in the feedback form box provided.
2. Returning your feedback form to;-
The Environment Partnership
The Genesis Centre
Birchwood Science Park
Birchwood
WA3 7BH
3. or by email to: tep@tep.uk.com

Please return your responses by **Friday 24th June 2022**.

Your feedback and details will be treated confidentially with all comments anonymised in summaries of this consultation.

Works To Date and Next Steps - Project Timeline



Project Aims

The Longford Park project has a clear vision: “An inclusive, resilient park at the heart of social, cultural and sporting life in Stretford that actively involves people in the celebration of its heritage, bringing sustained benefits for people, place and nature”.

The project aims to restore, re-connect and improve the existing features and facilities of this historic park, enhancing a valuable asset at the heart of the community. Improvements will respect and reimagine the former Longford Hall footprint, formal gardens, kitchen gardens and designed park landscape. Proposals aim to improve the park’s biodiversity and climate change adaptation role and resilience. Interventions will improve access and circulation for all ages and abilities as well as enhancing play, recreational and sports facilities, developing a major hub for physical activity and wellbeing.

1. Enhancement to the northern gateway and setting of Firswood Community Centre building.

2. Improvements to sports facilities including a full size football pitch, an U9’s football pitch and a senior recreational cricket pitch.

3. Footpath connection to Ryebank Road.

4 The reinstatement of Longford Brook as an open watercourse to aid surface water drainage, to allow for greater surface water attenuation and to improve biodiversity.

5. Improved land drainage connections to Longford Brook, to alleviate flooding issues and to improve all year round disc golf playability.

6. To the peripheries of the park swathes of meadow grassland and tree planting will aim to enhance biodiversity value and wildlife corridors.

7. Regeneration of the Long Barn for community benefit, including improvements to the setting, external spaces and circulation.

8. Wheeled Sports course including both a beginners and intermediate track.

9. Improvements to the character and circulation within the core of the site including the historic Longford Hall footprint, the kitchen garden/community allotment, Pets Corner and cafe.

10. Enhancement and refurbishment of the existing play areas, including improvements to surfacing and the update of a number of pieces of play equipment for all ages and abilities.

11. Improvements to the formal gardens including to land drainage to alleviate flooding. Improvements to the rose garden to cater for events and activities. Replenish ornamental planting, along with the interpretation of the rock and water garden.

12. Improved wildlife garden with wildlife pond to improve ecological value and biodiversity.

13. Surfacing of existing desire lines, to improve access and circulation to the southern end of the park.

14. Improvements to the existing tennis and basketball courts, through resurfacing and the installation of new equipment including tennis nets, football net, basketball hoops and sprint track.

15. Improvements to the public realm and the resurfacing and reconfigure of the Rybank road car park, to maximise capacity and to improve this important gateway.

16. Improved land drainage to the Grand Lawn and southern section of the park.



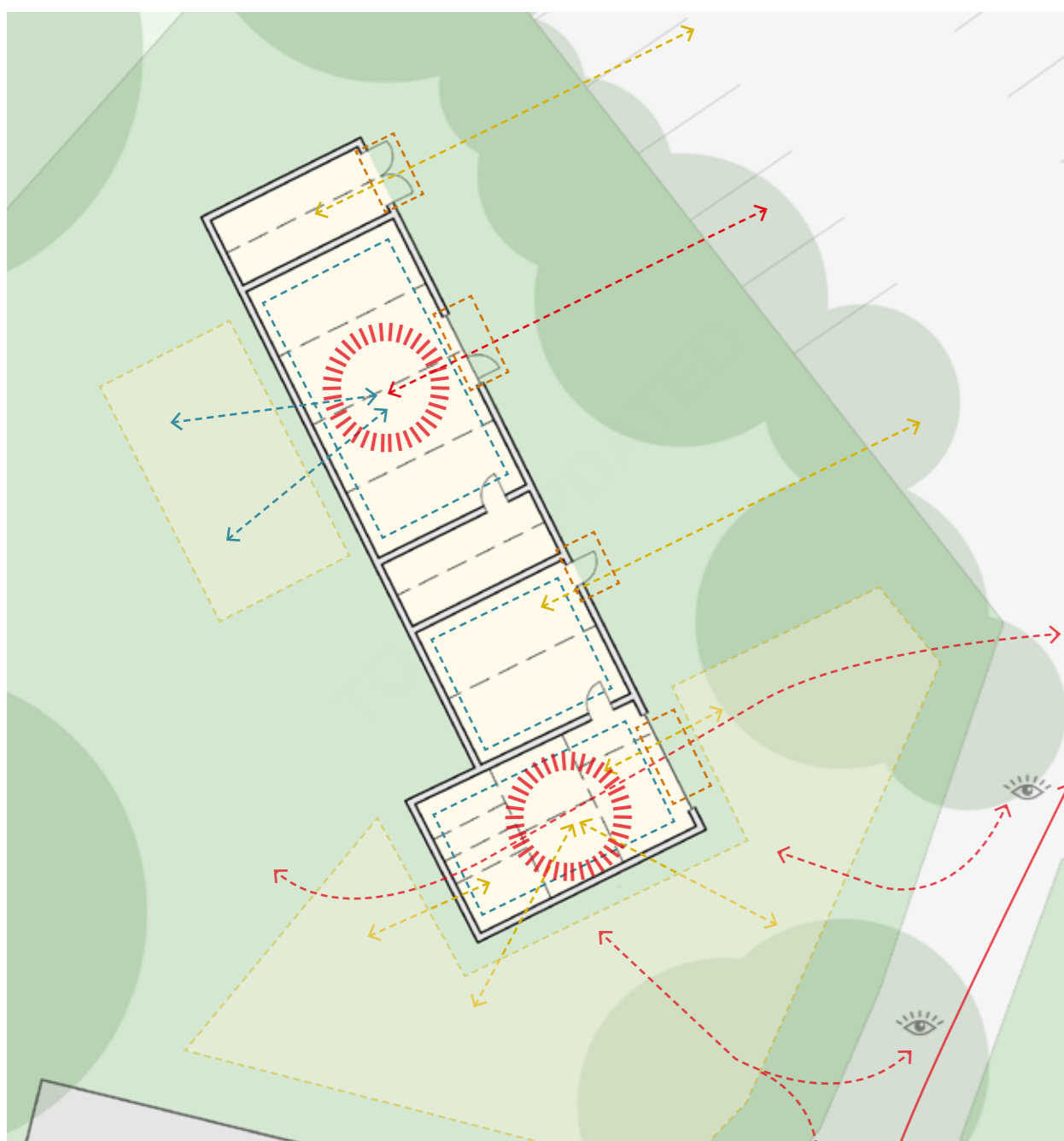
Long Barn

Long Barn is located in the central core of the park. There is a great opportunity to restore the Long Barn for community benefit. The restoration of the buildings function and appearance, alongside improvements to the building setting, public realm, circulation and car parking will create a valuable community hub to the core of the park.

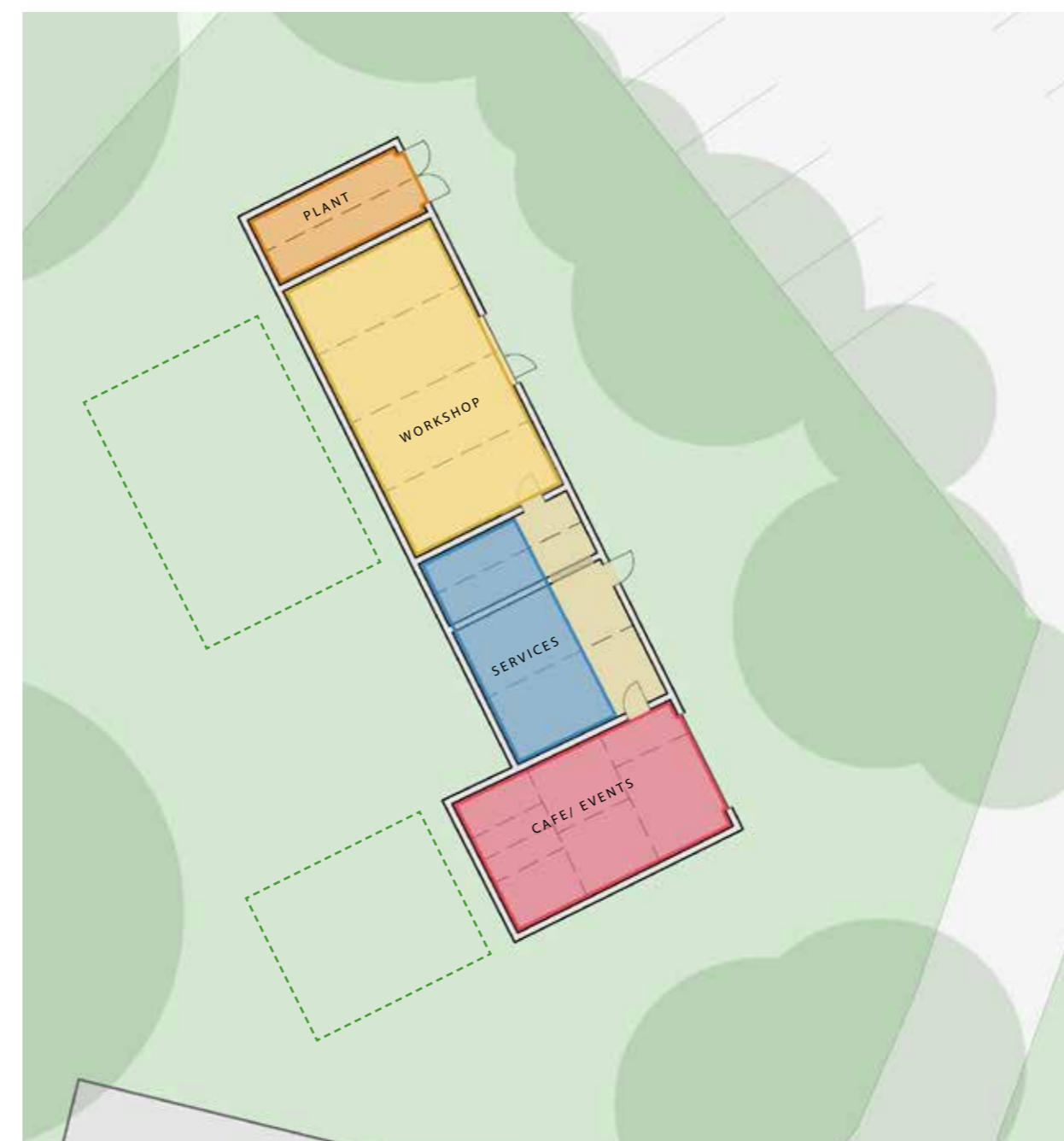
1. The restoration of the Long Barn for community benefit, including education and volunteering activities.
2. Improvements to the public realm to the north east elevation of the building, opening up the Long Barn into the park, improving the setting and access and circulation.
3. Creation of semi private and public outdoor spill out spaces to the south west elevation of the building, to support communal activities within the core spaces of the Long Barn.
4. Reconfiguration of the car parking, to enhance the setting of Long Barn and improve pedestrian movements, but still providing limited car parking spaces associated with community usage and activities.
5. Improved connections and better incorporation of the Disc Golf course into the core of the park.
6. Proposed wheel sports course, including both a beginners and intermediate track. The courses takes advantage of the sites undulating topography and mature tree cover.
7. Improved drainage, through the use of surface water attenuation, with links to the Longford Brook water course.



Contains OS data © Crown Copyright and database right 2022. All rights reserved. Licence number 0100057890



The current Long Barn interior is split up into five separate spaces. The internal layout comprises of a large central core, large southern space and then three smaller rooms, with two located to the centre and one to the north.



Proposals aim to create two defined activity spaces, utilising the largest central core and large southern space, with shared services and amenities in the centre. Allowing both public and private spaces under one roof.



Proposals include a series of conditioned pods within the various spaces. This approach provides high levels of flexibility with adequate ancillary space to support multiple functions and communal needs.



Central Core

Longford Hall footprint, Ryland Kitchen Garden and Community Allotment, Pets Corner and play area

The central core comprises of some of the most historically significant areas of the park including the former Longford Hall and kitchen gardens. Proposals aim to celebrate the parks history, re imagine the Longford Hall footprint and reinstate historic footpath routes to better connect the central core to the rest of the park. Proposals also aim to upgrade and enhance popular facilities including Pets corner and the play area

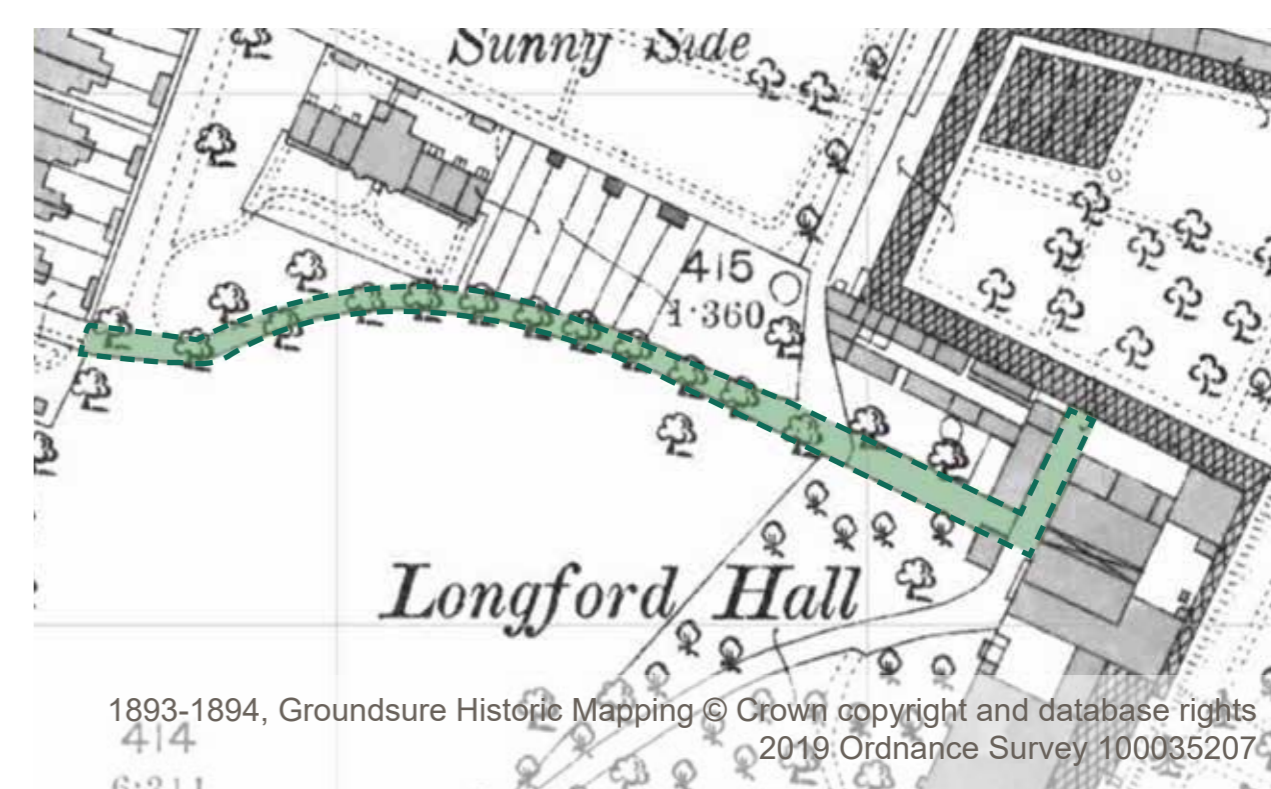
1. The reconfiguration of the former Longford Hall, including the redesign of the hall footprint to respect and better interpret the historical layout and the former internal room functions. Proposals will aim to improve surveillance and create a more welcoming, usable and accessible space for park users to enjoy.
2. Within the former hall footprint is the inclusion of a surfaced outdoor events space for future community usage.
3. The reinstatement of historic footpath routes, to better connect the hall and walled gardens with the central core. The footpath/circulation layout takes inspiration from historic maps and information (as indicated on the historic maps below).
4. The creation of a new direct pedestrian link to the formal gardens, improving connectivity between historic elements.
5. Enhancements to the Rylands Kitchen Garden and Community Allotments including new greenhouses, formalised growing spaces and improved access and circulation to encourage greater communal usage.
6. The improvement of Pets Corner, including volunteer facilities and the animal enclosures. Proposals will improve access and circulation as well as reinstating visual links to the former Longford Hall and formal gardens.
7. Enhancement and refurbishment of the existing play area. Proposals include the update of a number of pieces of play equipment, reconfiguration and extension of the play space and improvements to surfacing, to improve accessibility and encourage usage by all ages and abilities.
8. Improvements to pedestrian and cyclist movements through the incorporation of a raised shared surface to the carriageway outside of the cafe. This intervention aims to improve access and circulation and safety through the reduction of vehicle speeds to the core of the park and aspires to provide pedestrian/cyclist priority within the central core.



Contains OS data © Crown Copyright and database right 2022. All rights reserved. Licence number 0100057890

Historic map

The historic map opposite, dated 1893 - 1894 indicates the former access route off Cromwell Road direct to into Longford Hall and is the inspiration for the proposed reinstatement of the historic access and circulation routes to the central core.



1893-1894, Groundsure Historic Mapping © Crown copyright and database rights 2019 Ordnance Survey 100035207



Public Square based on Albanian Carpet, Shiroka, Albania. Photo is by Ergys Zhabjaku. Image from Dezeen



Gardens of the Hospital in Valencia. © David Frutos. Image from Landezine



Outline of Old Bell Tower of a Former Church in Staßfurt, Germany. © Michael Uhlmann. Image from Landezine



Contains OS data © Crown Copyright and database right 2022. All rights reserved. Licence number 0100057890

Proposals aim to improve a number of aspects of this part of the park including; the northern gateway, sports facilities, drainage, biodiversity and green infrastructure and access and circulation.

1. Enhancement to the northern gateway and Firwood Community Centre setting, including improvements to pedestrian circulation and access from Great Stone Road, reconfiguration of the car parking to reduce car dominance and improved public realm.
2. Improvements to sports facilities including a full size football pitch, an U9's football pitch (allowance for 2x orientations to aid pitch health) and a senior recreational Cricket Pitch (Sports pitches to Football Association and English Cricket Board recommended dimensions). Proposals include a new pedestrian access to Ryebank Road.
3. The reinstatement of Longford Brook as an open watercourse to aid surface water drainage and to improve biodiversity. Widening of Longford Brook to the west, to allow for greater surface water attenuation. Wet grassland will be created to improve biodiversity. Within the Disc Golf course improved land drainage connections to Longford Brook, will aim to alleviate flooding issues and to improve all year round disc golf course playability.
4. Enhancement of the older children's play area, including improvements to surfacing and the update of a number of pieces of play equipment to increase play value .



South

To the south, proposals respect the historic layout of the park, enhancing existing park components to improve sports facilities, access and circulation, drainage and gateways into the park.

1. Improvements to the existing tennis courts, including the resurfacing, relining of the courts, and new tennis nets to create a more up to date and inviting facility.
2. The creation of a youth sports area, including the creation of a new basketball court. An individual football net, basketball hoop and sprint track will encourage more informal games.
3. Formalisation and surfacing of existing desire lines to the southern boundary of the park, to improve access and to create a circular route to the southern section of the park.
4. Formalisation and improvements to the existing pedestrian access off Edge Lane.
5. Improvements to the Rybank Road park gateway, including quality public realm and the formalisation, resurfacing and reconfigure of the main car park, to maximise capacity and to create a more welcoming gateway into the park.
6. Repairs to the Grand Lawn historic ha-ha and improvements to drainage.
7. Improved park wide land drainage to alleviate flooding, through the use of surface water attenuation, utilising the existing topography. Wet grassland creation will aim to improve biodiversity.

