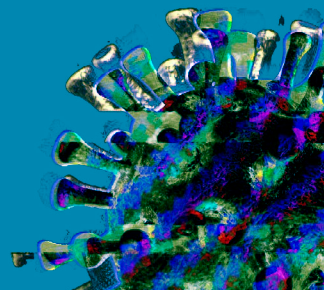
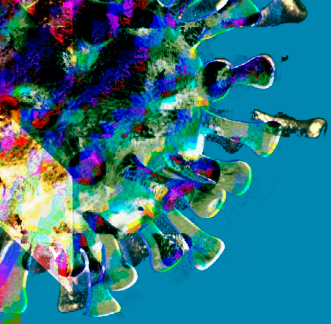




TRAFFORD
COUNCIL

Supporting you to trade safely.

We want to help you to protect your
business from cases of Covid-19.



Supporting you to trade safely

We want to help you to protect your business from cases of Covid. We are still seeing some businesses closing because of cases in their workforce. Regular testing can reduce the risk of this, by catching cases sooner and reducing the likelihood of an outbreak.

Please consider:

- Encouraging your staff to test regularly
- Reviewing your risk assessment
- Contacting public health if any of your staff test positive

Asking your staff to test regularly

1 in 3 people do not have any Covid symptoms.

Using lateral flow tests twice a week means that people with Covid can be picked up before they come into work. This protects your other staff and your customers from being exposed to Covid and can stop a whole shift of staff having to self-isolate.

If you do not have symptoms

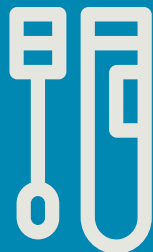
You can now get regular tests delivered to your home. These are lateral flow tests. Order lateral flow tests to your home by visiting www.nhs.uk/get-tested or call **119**.

You should do lateral flow tests if you do not have symptoms.

You should do lateral flow tests twice a week (every 3 to 4 days) to check if you have the virus.

If you test positive with a lateral flow test you must book a PCR test. Call **119** or visit www.gov.uk/get-coronavirus-test to book a PCR test.

If you test positive with a PCR test you must self-isolate for 10 days.



If you do have symptoms

If somebody has symptoms they should self-isolate straight away and not come to work. They must then book a PCR test – don't rely on lateral flow tests in this instance.



A high temperature



A new, continuous cough



A loss or change to your sense of smell or taste

Get a PCR test if you have any of these symptoms.

Call **119** or visit www.gov.uk/get-coronavirus-test to book a PCR test. Once you have had a PCR test, you and anyone you live with should stay at home until you get your test result.

If you test positive with a PCR test you must self-isolate for 10 days.

Risk assessments

We know that many businesses are getting busier as the weather improves and large events start to take place again.

Please regularly review your risk assessments and how you put them into place. Sadly businesses are still getting outbreaks and having to close. Good management of your risk assessment and ensuring staff enforce your rules help to prevent the spread of Covid. Please remember face coverings are mandatory unless exempt or seated.

Contacting public health

Trafford Council's public health team are here to support you. Please get in touch with us as soon as you have a positive case in your business. We will support you to make sure you understand how to deal with this and assist you with contact tracing. Many businesses have already benefitted from our support. Please email us on covidtrace@trafford.gov.uk.



TRAFFORD
COUNCIL

Tel: 0161 912 4080

Email: info@trafford.gov.uk

Web: www.trafford.gov.uk

Twitter: @traffordcouncil

Facebook: /traffordcouncil

TRAFFORD STANDS UNITED
AGAINST COVID

