

**B&Q**

Great Stone Road, STRETFORD, M32

**Property Reference: 45\_01**  
**Ground Floor**

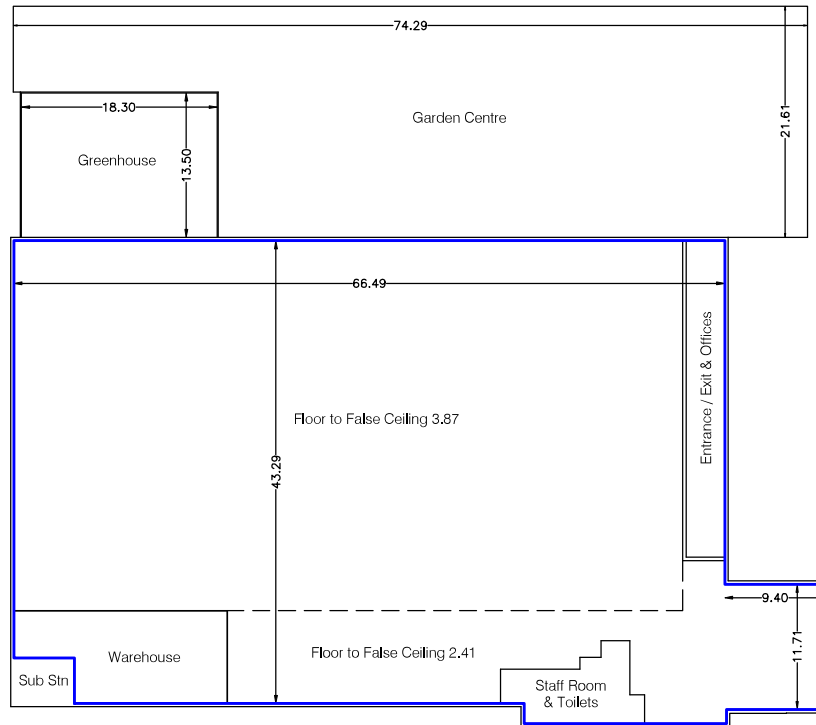
**Gross Internal Area**

<span style="border: 1px solid blue; display: inline-block; width: 15px; height: 10px;"></span> GIA	2999.6 sq m	32287 sq ft
---	-------------	-------------

**TOTAL GIA: 2999.6 sq m 32287 sq ft**

The following has been EXCLUDED from the TOTAL GIA:

Garden Centre	1345.0 sq m	14477 sq ft
Greenhouse	247.0 sq m	2659 sq ft



CAR PARK

CAR PARK

Condition of Site:  
**Occupied**  
Vacant  
**Heavy Fit-Out**  
Shell & Core  
Under Construction  
Cat A Fit-Out

Notes:  
This drawing complies with the 6th edition of the RICS code and indicates the extent of the areas quoted, produced to an accuracy commensurate with standard presentation scales. It is held in a scaled digital CAD format.

Revisions:  
A - Original Issue (May 2013)

**Dwg No. 28900-45\_01-AG**

Issue A May 2013

Scaled for presentation purposes

**Plowman Craven**  
Regulated by RICS



+44(0) 1582 765566 www.plowmancraven.co.uk