

**Appendix 3.13 - revised Level 0
Plan (ref: PL_102 Rev D) and
Courtyard elevations (5 Oct 2020)**

Notes:

All dimensions are in millimetres unless stated otherwise. No dimensions to be scaled from drawings. All dimensions to be checked on site prior to manufacture.

Any discrepancies between drawings and site conditions are to be reported to the contract manager.

This drawing is to be read in conjunction with all relevant Structural Engineers and Mechanical & Electrical Engineers drawings and specification.

Copyright of this drawing and all the information it contains is the sole property of OEA and may not be reproduced or used for any purpose without the express approval of the authors.



1 Elevation 1
1 : 200



2 Elevation 2
1 : 200



3 Elevation 3
1 : 200



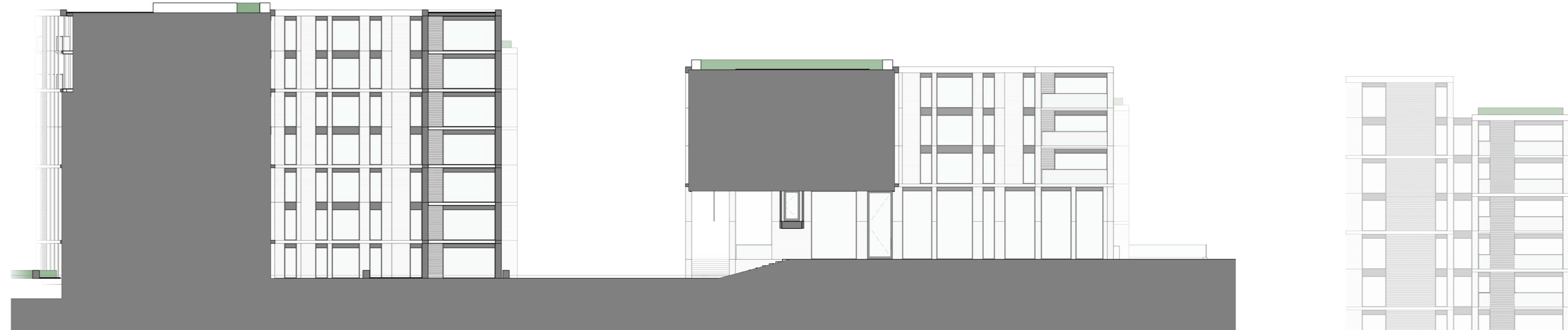
9 Elevation 4
1 : 200



5 Elevation 5
1 : 200

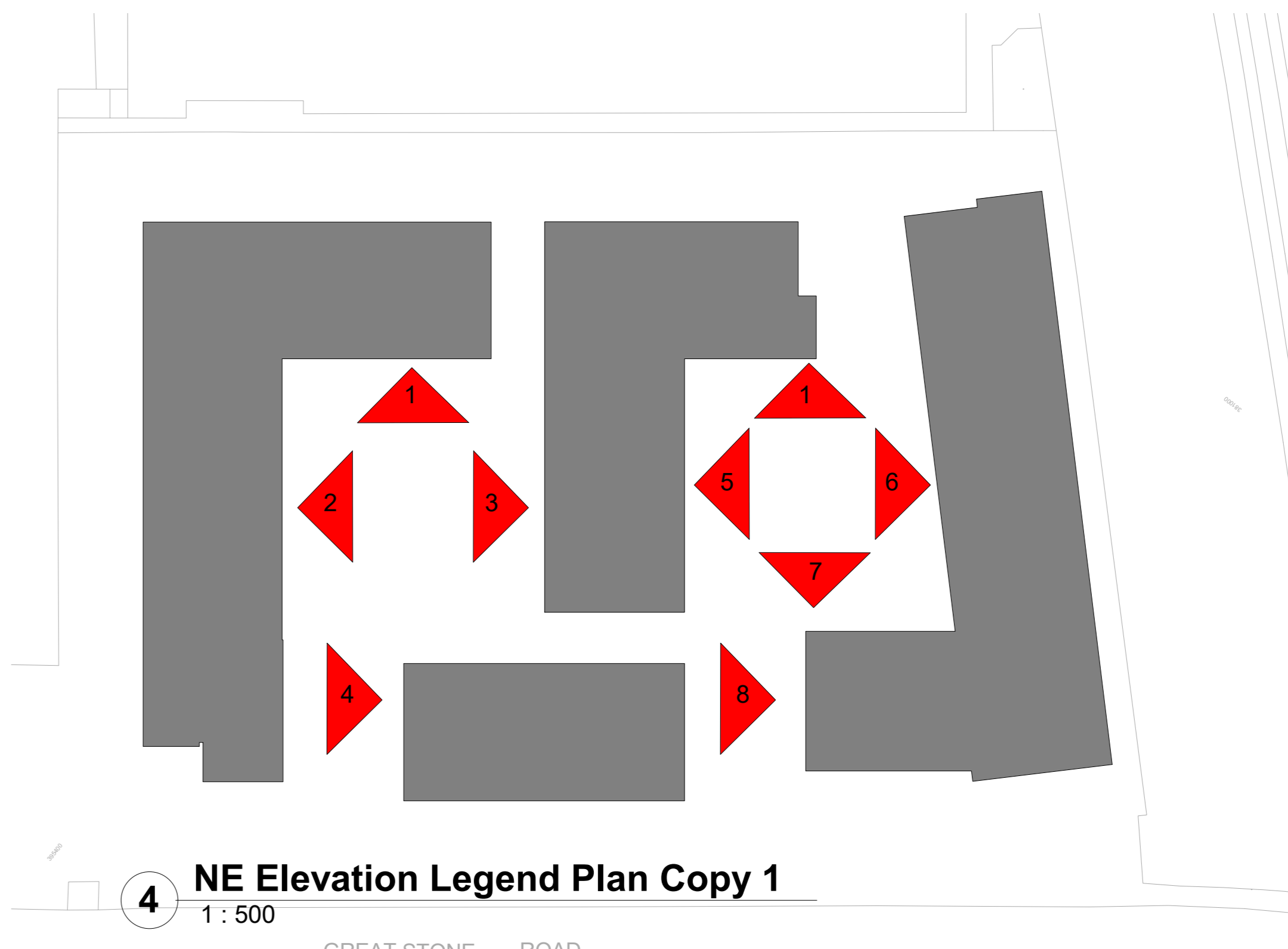


6 Elevation 6
1 : 200



7 Elevation 7
1 : 200

8 Elevation 8
1 : 200



4 NE Elevation Legend Plan Copy 1
1 : 500

dwg status:

| Rev | Description | Date | By | Chk |
|-----|-------------|------|----|-----|
| | | | | |

oea

O'Connell East Architects
43 Newton Street, Manchester, MI 48106
P: 313.887.9282 F: 313.887.9338

| | | | |
|------------|-------------------|---------|--------|
| dwg title: | Elevation sheet 2 | | |
| job title: | Great Stone Road | | |
| scale: | As indicated @ A0 | drawn: | Author |
| date: | 10/30/19 | job no: | 1664 |
| dwg no: | PL_205 | rev: | |