

**Appendix 3.10- Email from  
TMBC to OEA (17 Sept 2020)  
site accessibility**

**Bhanderi, Pushpa**

---

**From:** Harrison, Debra <Debra.Harrison@trafford.gov.uk>  
**Sent:** 01 October 2020 10:35  
**To:** 'Paul O'Connell'; 'Aleks Hayward'  
**Cc:** Hard, Matt; Welch, Victoria; Payne, Hannah  
**Subject:** RE: 100400/OUT/20 - accessibility query  
**Attachments:** 1664\_PL\_102 - Level 0 Plan.pdf

Hi Paul,

The Level 0 Plan Rev C I have indicates a door, which isn't shown on your excerpt. It looks like it's just in the wrong position on the Rev C plan I have (attached).



In terms of inclusive access I would advise that a more direct route for wheelchair users is included than that noted on my previous excerpt for those who may not arrive by car. If there is room for a platform lift to be accommodated adjacent to the retail unit, I think one should be included.

Kind regards

Debra

**Debra Harrison**  
**Major Planning Projects Officer**

Planning and Development  
 Place Directorate  
 Trafford Council – Trafford Town Hall – Talbot Road – Stretford – M32 0TH  
 T (Direct Dial): 0161 912 1930 / 07890518398  
 T (Planning General Enquiry Line): 0161 912 3149  
 F: 0161 912 3128  
 E: [Debra.Harrison@trafford.gov.uk](mailto:Debra.Harrison@trafford.gov.uk)

Trafford Council is a well-performing, low-cost council delivering excellent services to make Trafford a great place to live, learn, work and relax. You can find out more about us by visiting [www.trafford.gov.uk](http://www.trafford.gov.uk).

The Planning and Development Service privacy notice can be viewed [here](#).

---

**From:** Paul O'Connell [mailto:paul@oea.org.uk]  
**Sent:** 01 October 2020 10:18  
**To:** Harrison, Debra <Debra.Harrison@trafford.gov.uk>; Aleks Hayward <aleks@oea.org.uk>  
**Cc:** 'Hard, Matt' <matthew.hard@wsp.com>; 'Welch, Victoria' <victoria.welch@wsp.com>; 'Payne, Hannah' <hannah.payne@wsp.com>  
**Subject:** Re: 100400/OUT/20 - accessibility query

Hi Debra

I'm not sure where you mean regarding the flat adjacent to the platform lift - would it be possible to mark up a screenshot (or the screenshot attached)?

It was thought that most wheelchair users will arrive by car and use the main core lifts so there is currently only one platform lift up to the northern courtyard accessible from the lower ground level. If it was considered necessary another platform lift could be installed alongside the external stairs up to the courtyard adjacent to the retail unit. Hope this helps.

Kind regards

Paul

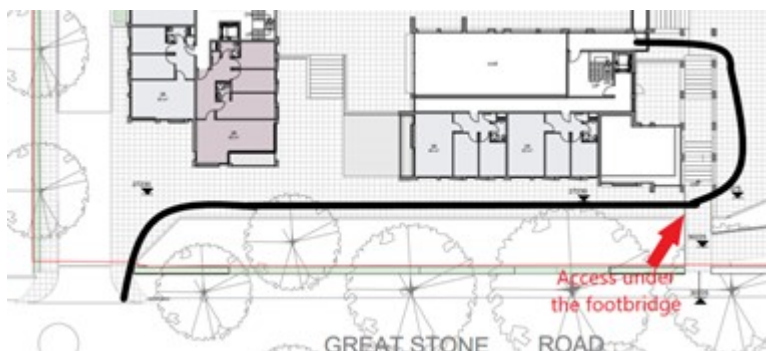
---

**From:** Harrison, Debra <[Debra.Harrison@trafford.gov.uk](mailto:Debra.Harrison@trafford.gov.uk)>  
**Sent:** Wednesday, September 30, 2020 5:28 PM  
**To:** Paul O'Connell <[paul@oea.org.uk](mailto:paul@oea.org.uk)>; Aleks Hayward <[aleks@oea.org.uk](mailto:aleks@oea.org.uk)>  
**Cc:** 'Hard, Matt' <[matthew.hard@wsp.com](mailto:matthew.hard@wsp.com)>; 'Welch, Victoria' <[victoria.welch@wsp.com](mailto:victoria.welch@wsp.com)>; 'Payne, Hannah' <[hannah.payne@wsp.com](mailto:hannah.payne@wsp.com)>  
**Subject:** 100400/OUT/20 - accessibility query

Hi Paul/Aleks,

Thank you for pulling together the information on accessibility. I just have a couple of queries I hope you can clarify:

- The level 0 plan shows a door into the flat adjacent to the platform lift in the NW corner of the site. Is this proposed or is it a hangover from the Level -1 floorplan?
- Please forgive the crude drawing on the extract below but if a wheelchair user wanted to access the northern courtyard / northern /central blocks of development - is this route to the platform lift the only one available to them except for using the lifts in the basement?



Kind regards

Debra

**Debra Harrison**  
**Major Planning Projects Officer**

Planning and Development  
 Place Directorate  
 Trafford Council – Trafford Town Hall – Talbot Road – Stretford – M32 0TH  
 T (Direct Dial): 0161 912 1930 / 07890518398  
 T (Planning General Enquiry Line): 0161 912 3149  
 F: 0161 912 3128  
 E: [Debra.Harrison@trafford.gov.uk](mailto:Debra.Harrison@trafford.gov.uk)

Trafford Council is a well-performing, low-cost council delivering excellent services to make Trafford a great place to live, learn, work and relax. You can find out more about us by visiting [www.trafford.gov.uk](http://www.trafford.gov.uk).

The Planning and Development Service privacy notice can be viewed [here](#).

*This email and its attachments are confidential and for the exclusive use of the intended recipient(s). If you are not the intended recipient(s) please do not read, print, re-transmit, store or act in reliance on it or any attachments. If you have received this communication in error please notify the sender immediately by e-mail or by telephone and then permanently delete the e-mail and any copies of it. The Council may be required to disclose this email or any response to it under the Freedom of Information Act 2000.*

*The full Trafford Council email disclaimer can be viewed at:*

*<http://www.trafford.gov.uk/emaildisclaimer.asp>*

*GCSX This transmission is intended for the named addressee(s) only and may contain sensitive or protectively marked material up to RESTRICTED and should be handled accordingly. Unless you are the named addressee (or authorised to receive it for the addressee) you may not copy or use it, or disclose it to anyone else. If you have received this transmission in error please notify the sender immediately. All GCSX traffic may be subject to recording and/or monitoring in accordance with relevant legislation*