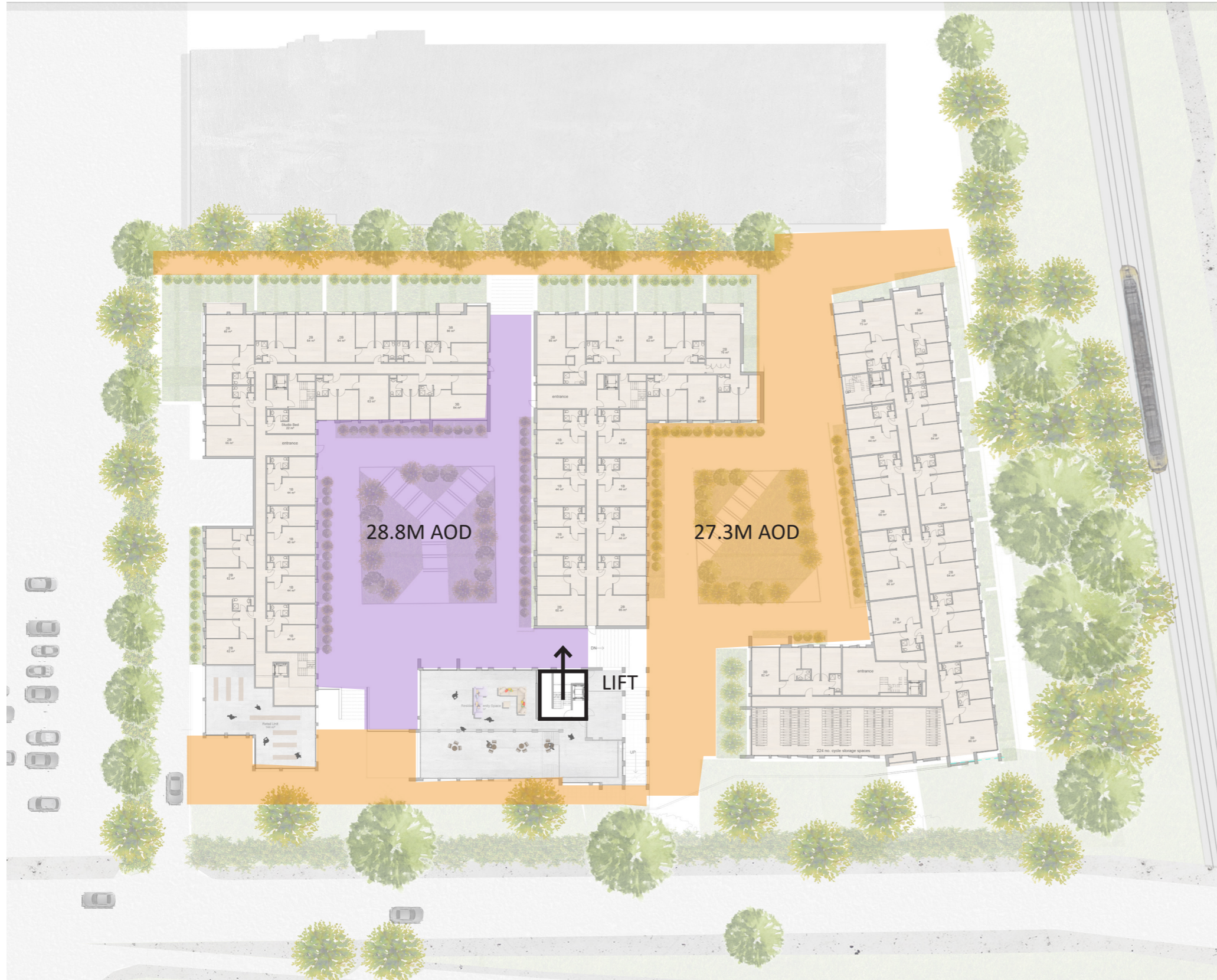


Appendix 3.11 - Accessibility report prepared by OEA

Courtyard accessibility



The courtyards are split over two different levels due to the parking provisions below. The West Courtyard is 1.5 m higher than the East courtyard which is level with the remainder of the site. The West courtyard can be accessed by stairs and lift while the East courtyard can be accessed directly without ramps or steps.

The following two pages describe the access and levels in more detail



Courtyard level access routes

The scheme is fully accessible and contains a combination of level access and stepped/lift access. The accessible routes into the scheme are indicated to the image to the Left




Level access




Lower Ground floor - Accessibility

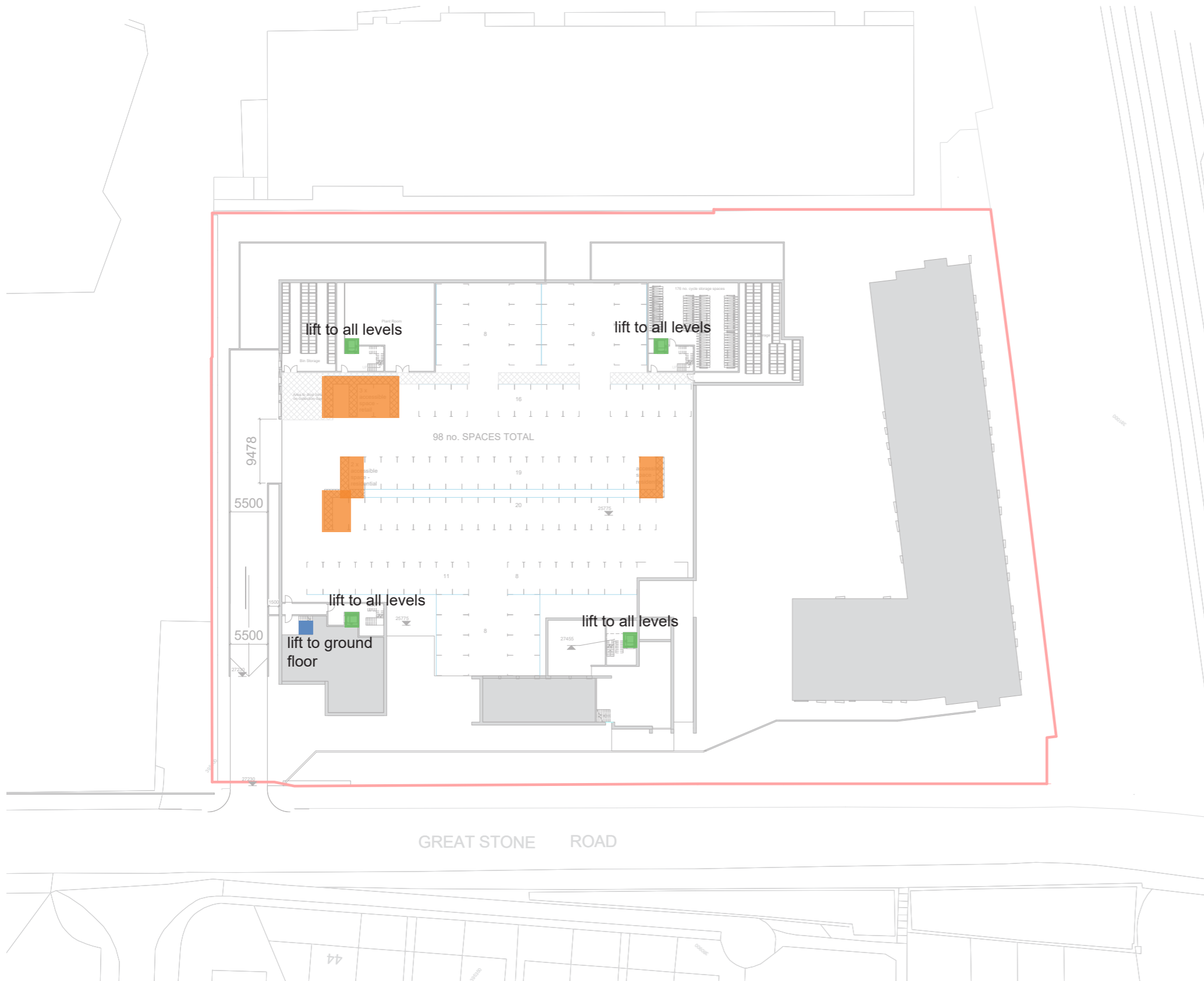
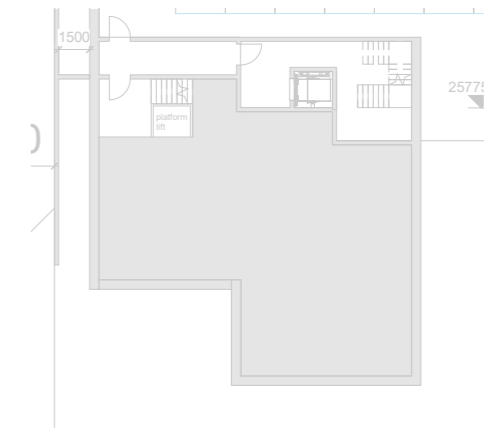
The lower ground floor contains many lifts that lead to the ground floor courtyard and accommodation on upper levels.

There are also 6 x accessible parking spaces

 Accessible parking spaces

 Lift

 Platform/ through lift from car park onto ground floor




GREAT STONE ROAD



Internal Ground floor - Accessibility

The Ground floor of the scheme contains lifts at each entry point into the courtyard. There is also a platform lift that takes users from the Ground floor retail

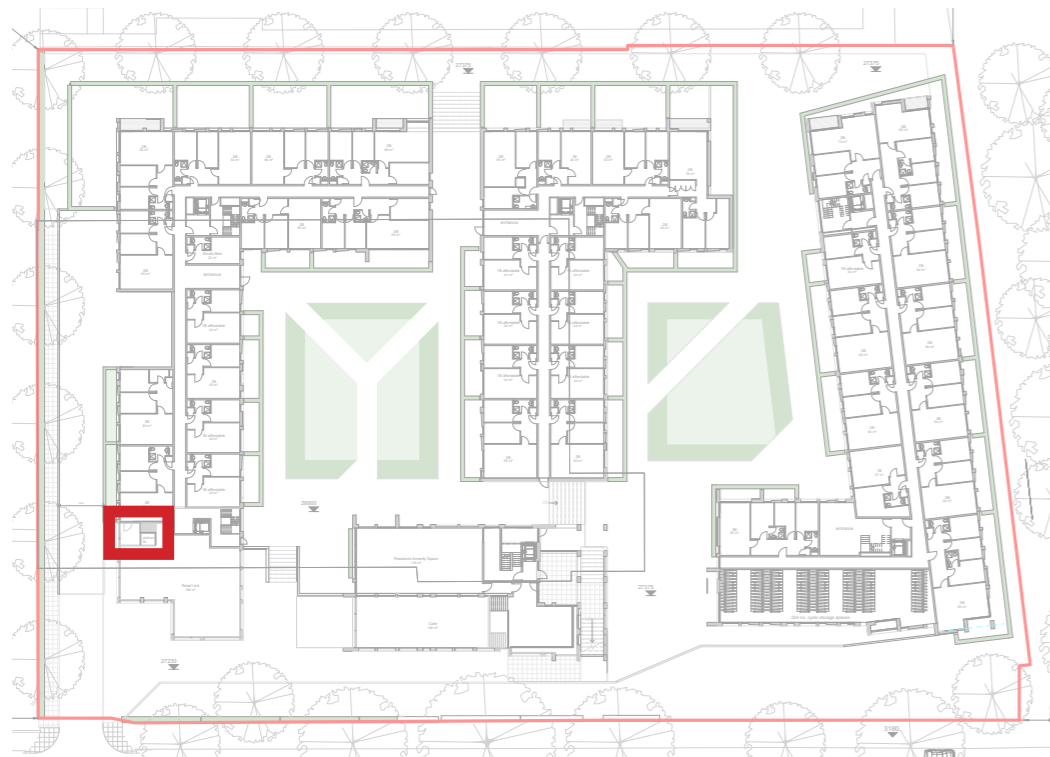
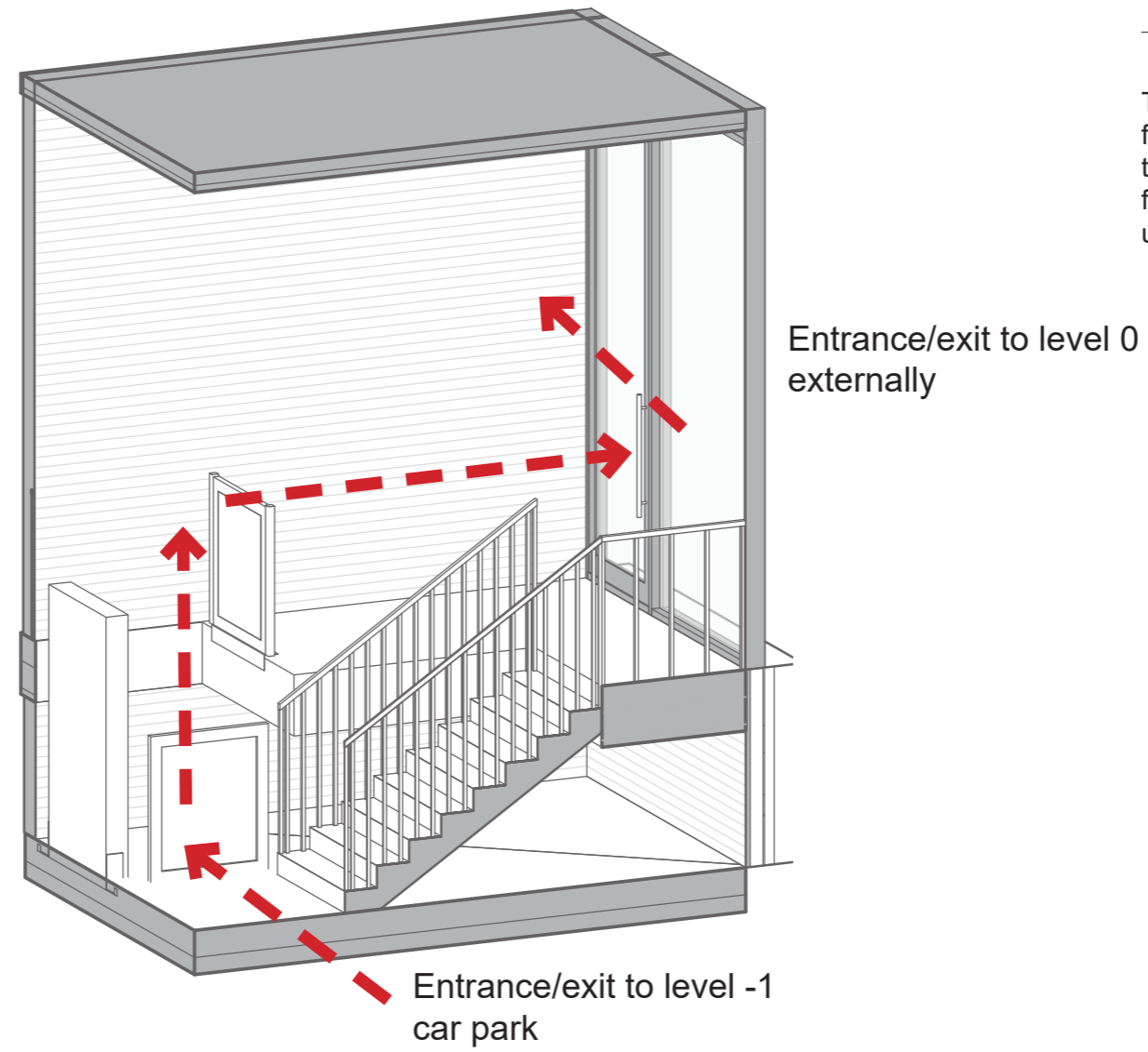
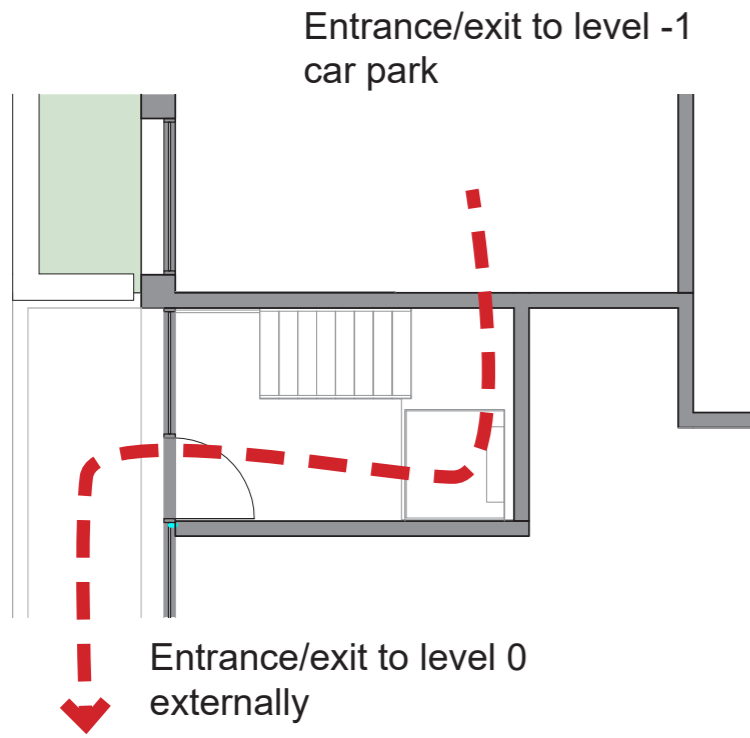
 Lift

 Platform/ through lift from car park onto ground floor retail unit



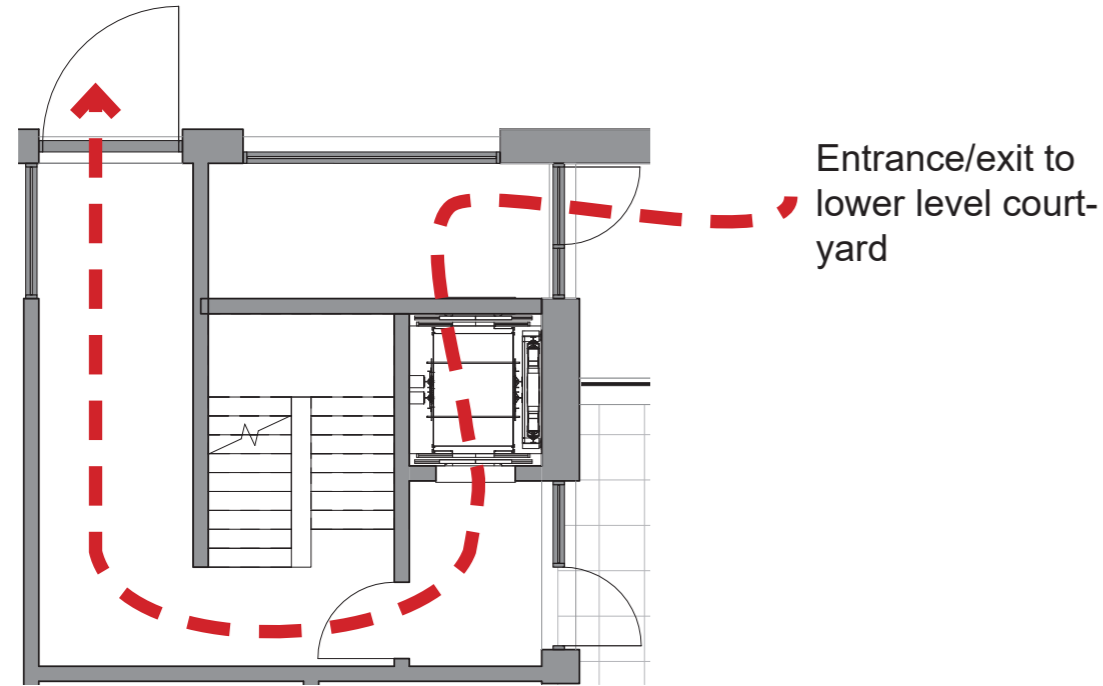
Platform lift

The platform lift from Level -1 to level 0 provides access from the car park to the retail units. This lift can be used by the public and allows the residential lifts to be separated from the general public. An explanation of how this lift is used can be seen to the Left.



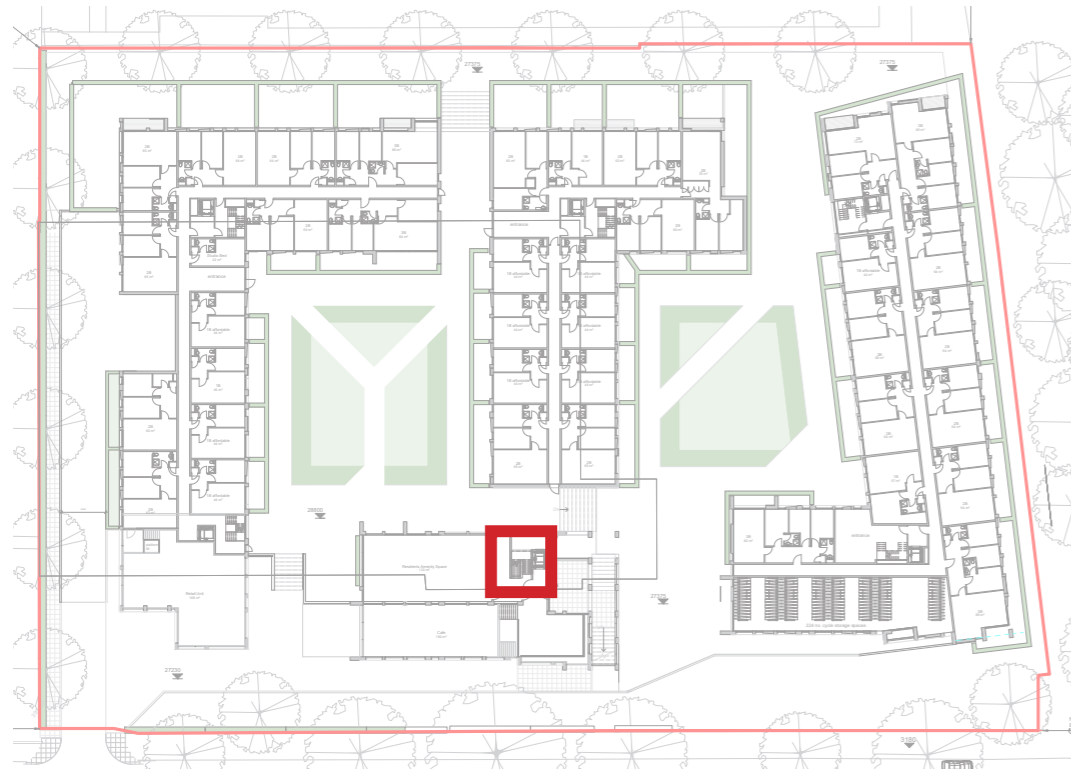
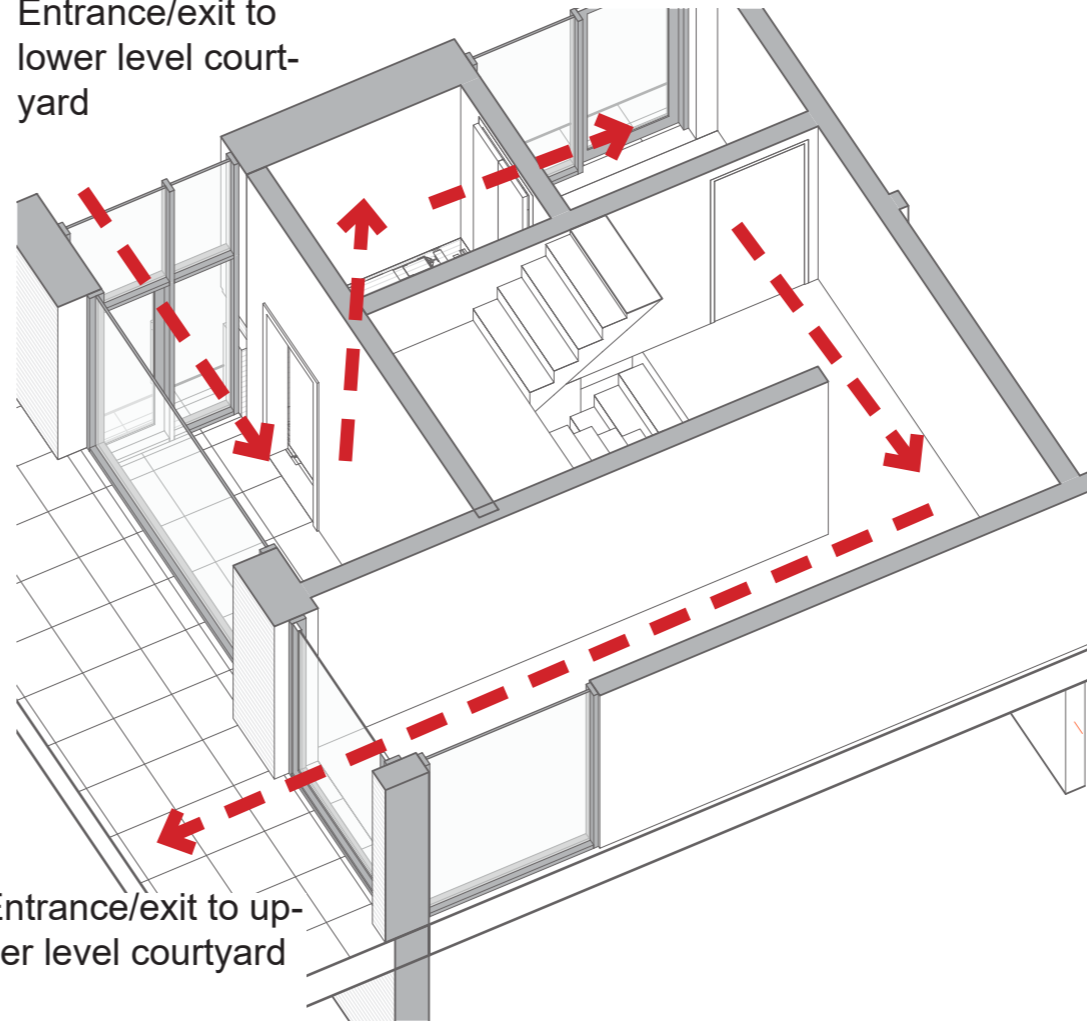
courtyard lift

Entrance/exit to upper level courtyard



The courtyard lift from the lower to the upper courtyard level provides lift access between courtyards. The way in which this lift is used to be seen to the left

Entrance/exit to lower level courtyard



Internal Typical floor - Accessibility

Typical floors have lifts to each corner of the scheme, allowing users to access the ground floor and to level -1

 Lift



GREAT STONE ROAD

