

BOROUGH OF TRAFFORD (PROHIBITION OF WAITING AND LOADING AND PROVISION OF PARKING) ORDER 2001 (AMENDMENT NO 195)(PART D) ORDER 2019

NOTICE IS HEREBY GIVEN that Trafford Borough Council has made an Order under the Road Traffic Regulation Act 1984.

The effect of the Order will be to amend the Borough of Trafford (Prohibition of Waiting and Loading and Provision of Parking) Order 2001, as amended, (“the 2001 Order”) by the introduction of the following provisions:

- a) No waiting at any time Code – 7A

on the lengths of roads specified in the Schedule hereto by the addition, to the Schedule to the 2001 Order, of the lengths of road specified in the Schedule below.

SCHEDULE - proposed

Street	Side	From	To	Code
Clifton Street, Old Trafford	south west	a point 30 metres north west of its junction with St Brides Way	its junction with St Brides Way	7A
Cross Street, Old Trafford	both	its junction with Shrewsbury Street	a point 10 metres north east of its junction with Shrewsbury Street	7A
Cross Street, Old Trafford	north west	a point 10 metres south west of its junction with Hamer Drive	a point 19 metres north east of its junction with Hamer Drive	7A
Cross Street, Old Trafford	south east	a point 43 metres north east of its junction with Shrewsbury Street	a point 65 metres north east of its junction with Shrewsbury Street	7A
Hamer Drive, Old Trafford	both	a point 10 metres north west of its junction with Cross Street	its junction with Cross Street	7A
Shrewsbury Street, Old Trafford	north east	a point 10 metres north west of its junction with Cross Street	a point 11 metres south east of its junction with Cross Street	7A
Shrewsbury Street, Old Trafford	north east	a point 53 metres south east of its junction with Cross Street	a point 51 metres north west of its junction with St Brides Way	7A
Shrewsbury Street, Old Trafford	north east	a point 10 metres north west of its junction with St Brides Way	a point 10 metres south east of its junction with St Brides Way	7A
St Brides Way, Old Trafford	north west	its junction with Shrewsbury Street	a point 46 metres north east of its junction with Shrewsbury Street	7A
St Brides Way, Old Trafford	north west	a point 76 metres north east of its junction with Shrewsbury Street	its junction with Clifton Street	7A
St Brides Way, Old Trafford	south east	its junction with Shrewsbury Street	a point 40 metres south west of its junction with Duke Close	7A

The proposals, which were advertised at the same time as the above, for Bowfell Road and Craig Avenue, Urmston were made operative on 29th January 2018, the proposals for Warwick Road South, Firswood were made operative on 1st August 2018 and the proposals for Rye Bank Road area were made operative on 1st April 2019.

The Order will come into operation on 31st May 2019, and a copy, together with a map showing the lengths of road to which it relates may be inspected at Stretford Library information desk during the normal opening hours and online at: www.trafford.gov.uk/trafficregulationorders

If you wish to question the validity of the Order or any provision contained in it, on the grounds that it is not within the powers contained in the Road Traffic Regulation Act 1984, or that any requirement of that Act or of any instrument made under it has not been complied with in relation to the Order you may, within six weeks from 30th May 2019 apply to the High Court for that purpose.

Dated: 30th May 2019
 One Trafford/Trafford Council, Traffic Section,
 Tatton House,
 11 Caldey Road,
 Manchester, M23 9LF

Abbreviated notice for papers

BOROUGH OF TRAFFORD (PROHIBITION OF WAITING AND LOADING AND PROVISION OF PARKING) ORDER 2001 (AMENDMENT NO 195)(PART D) ORDER 2019

NOTICE IS HEREBY GIVEN that Trafford Borough Council has made an Order under the Road Traffic Regulation Act 1984.

The effect of the Order will be to amend the Borough of Trafford (Prohibition of Waiting and Loading and Provision of Parking) Order 2001, as amended, ("the 2001 Order") by the introduction restrictions on lengths of Clifton Street, Cross Street, Hamer Drive, Shrewsbury Street and St Brides Way, Old Trafford.

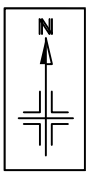
The proposals, which were advertised at the same time as the above, for Bowfell Road and Craig Avenue, Urmston were made operative on 29th January 2018, the proposals for Warwick Road South, Firswood were made operative on 1st August 2018 and the proposals for Rye Bank Road area were made operative on 1st April 2019.

The Order will come into operation on 31st May 2019, and a copy, together with a map showing the lengths of road to which it relates may be inspected at Stretford Library information desk during the normal opening hours and online at: www.trafford.gov.uk/trafficregulationorders

If you wish to question the validity of the Order or any provision contained in it, on the grounds that it is not within the powers contained in the Road Traffic Regulation Act 1984, or that any requirement of that Act or of any instrument made under it has not been complied with in relation to the Order you may, within six weeks from 30th May 2019 apply to the High Court for that purpose.

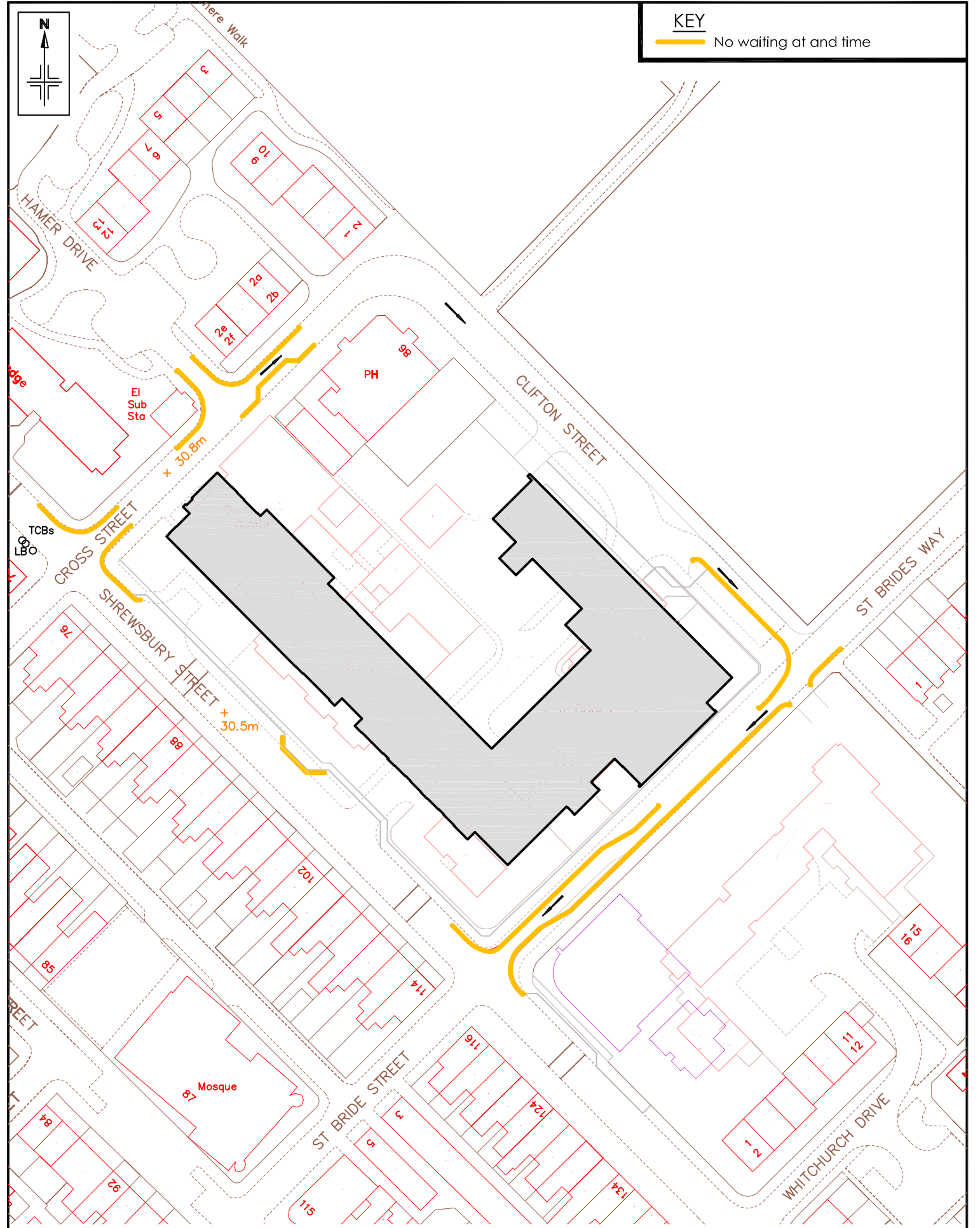
Dated: 30th May 2019

One Trafford/Trafford Council, Traffic Section, Tatton House, 11 Caldey Road, Manchester, M23 9LF



KEY

No waiting at and time



Reproduced from the Ordnance Survey mapping with the permission of the Controller of Her Majesty's Stationery Office © Crown copyright. Unauthorised reproduction infringes Crown copyright and may lead to prosecution or civil proceedings. One Trafford Partnership OS Licence No. 100023172 2018

Notes:
No Dimensions to be scaled from this drawing. All Dimensions are to be checked on site.

A	April 19	Restrictions on NE side of Shrewsbury Street reduced	BV	KW	KW
REV.	DATE	REVISION DETAILS	DRAWN	CHECKED	APPROVED

PROJECT & TITLE
 Shrewsbury Street Re-Development
 Proposed Traffic Regulation Orders
 Location Plan



DRAWN BV	CHECKED KW	APPROVED KW
SCALE NTS	DRAWING NO. E/8948/02	REVISION -
DATE July 17		
FILE PATH R:\BU\Environment\Built Environment\Traffic & Transportation\Cad and Digital Photographs\Shrewsbury Street		