

## BOROUGH OF TRAFFORD (PROHIBITION OF WAITING AND LOADING AND PROVISION OF PARKING) ORDER 2001 (AMENDMENT NO 231) ORDER 20??

**NOTICE IS HEREBY GIVEN** that Trafford Borough Council proposes to make an Order under the Road Traffic Regulation Act 1984.

The effect of the Order will be to amend the Borough of Trafford (Prohibition of Waiting and Loading and Provision of Parking) Order 2001, as amended, ("the 2001 Order") by the introduction or removal of the following provisions:

- |    |   |        |      |
|----|---|--------|------|
| a) | No Waiting At Any Time                            | Code - | 7A   |
| b) | No Waiting and No Loading At Any Time             | Code - | 7A7A |
| c) | School Entrance – No stopping, Mon-Fri, 8am – 5pm | Code - | SS   |
| d) | Residents' Parking Area B Match Day Restrictions  | Code - | RPB  |
| e) | Disabled Residents' Permit C Parking At Any Time  | Code - | RPC  |

on the lengths of roads specified in Schedules 1a, 1b & 1c and 2a hereto, by the addition, to the Schedule to the 2001 Order, of the lengths of road specified in Schedules 1a, 1b & 1c below and by the removal, from the Schedule to the 2001 Order, of the length of road specified in Schedules 2a below.

### Schedule 1a - Proposed

Street	Side	From	To	Code
Northumberland Road, Old Trafford	west	A point 62 metres north of its junction with Ayres Road	A point 100 metres north of its junction with Ayres Road	SS

### Schedule 1b - Proposed

Street	Side	From	To	Code
Northumberland Road, Old Trafford	west	A point 100 metres north of its junction with Ayres Road	A point 107 metres north of its junction with Ayres Road	7A7A

### Schedule 1c - Proposed

Street	Side	From	To	Code
A538 Hale Road, Hale Barns	south east	Its junction with High Elm Road	A point 15 metres southeast of its junction with High Elm Road	7A
A538 Hale Road, Hale Barns	south east	Its junction with High Elm Road	A point 10 metres north west of its junction with High Elm Road	7A
High Elm Road, Hale Barns	south east	Its junction with A538 Hale Road	A point 18 metres south of its junction with A538 Hale Road	7A
High Elm Road, Hale Barns	north west	Its junction with A538 Hale Road	A point 16 metres south of its junction with A538 Hale Road	7A
High Elm Road, Hale Barns	south east	Its junction with Warren Drive	A point 15 metres northeast of its junction with Warren Drive	7A
High Elm Road, Hale Barns	south east	Its junction with Warren Drive	A point 10 metres southwest of its junction with Warren Drive	7A
High Elm Road, Hale Barns	north east	Its junction with Elmridge Drive	A point 5 metres southeast of its junction with Elmridge Drive	7A
High Elm Road, Hale Barns	north east	Its junction with Elmridge Drive	A point 5 metres northwest of its junction with Elmridge Drive	7A
Elmridge Drive, Hale Barns	both	Its junction with High Elm Road	A point 5 metres northeast of its junction with High Elm Road	7A
Elmridge Drive, Hale Barns	south east	Its junction with Wilton Drive	A point 5 metres north east of its junction with Wilton Drive	7A
Elmridge Drive, Hale Barns	south east	Its junction with Wilton Drive	A point 5 metres south west of its junction with Wilton Drive	7A
Wilton Drive, Hale Barns	both	Its junction with Elmridge Drive	A point 5 metres south east of its junction with Elmridge Drive	7A

### Schedule 1d - Proposed

Street	Side	From	To	Code
Harcourt Street, Gorse Hill, Stretford	south east	a point 5 metres southwest of its junction with Taylors Road	a point 105 metres southwest of its junction with Taylors Road	RPB
Harcourt Street, Gorse Hill, Stretford	south east	a point 105 metres southwest of its junction with Taylors Road	a point 111 metres southwest of its junction with Taylors Road	RPC
Harcourt Street, Gorse Hill, Stretford	south east	a point 111 metres southwest of its junction with Taylors Road	a point 5 metres northeast of its junction with Thomas Street	RPB

### Schedule 2a - Proposed Revocation

Street	Side	From	To	Code
Harcourt Street, Gorse Hill, Stretford	south east	a point 5 metres southwest of its junction with Taylors Road	a point 5 metres northeast of its junction with Thomas Street	RPB

A copy of the Draft Order, together with statements of reasons may be inspected at Tatton House, Caldey Road, Manchester M23 9LF, Monday – Friday 10am – 3pm, however, travelling to and attendances at public buildings are being discouraged during the current restrictions, therefore, should you wish to receive a copy of the documents, please e-mail [traffordtraffic@amey.co.uk](mailto:traffordtraffic@amey.co.uk) or, if you do not have access to the internet, please ring 0161 694 8971 leaving your full name and address and the title of the scheme that you are referring to and details will be sent in the post. The proposals may also be viewed on-line at: [www.trafford.gov.uk/trafficregulationorders](http://www.trafford.gov.uk/trafficregulationorders).

Any objections to the proposals, together with the grounds on which they are made, should be sent, in writing, to the address below or by e-mail to [traffordtraffic@amey.co.uk](mailto:traffordtraffic@amey.co.uk) by 29<sup>th</sup> October 2020.

Dated: 8<sup>th</sup> October 2020

One Trafford/Trafford Council,  
Traffic Section,  
Tatton House,  
Caldey Road,  
Manchester,  
M23 9LF

### Abbreviated for papers

#### **BOROUGH OF TRAFFORD (PROHIBITION OF WAITING AND LOADING AND PROVISION OF PARKING) ORDER 2001 (AMENDMENT NO 231) ORDER 20???**

**NOTICE IS HEREBY GIVEN** that Trafford Borough Council proposes to make an Order under the Road Traffic Regulation Act 1984.

The effect of the Order will be to amend the Borough of Trafford (Prohibition of Waiting and Loading and Provision of Parking) Order 2001, as amended, (“the 2001 Order”) by the introduction or removal of restrictions on lengths of Northumberland Road, Old Trafford, Harcourt Street, Gorse Hill, Stretford, A538 Hale Road, High Elm Road, Elmridge Drive and Wilton Drive, Hale Barns

A copy of the Draft Order, together with statements of reason may be inspected at Tatton House, Caldey Road, Manchester M23 9LF, Monday – Friday 10am – 3pm, however, travelling to and attendances at public buildings are being discouraged during the current restrictions, therefore, should you wish to receive a copy of the documents, please e-mail [traffordtraffic@amey.co.uk](mailto:traffordtraffic@amey.co.uk) or, if you do not have access to the internet, please ring 0161 694 8971 leaving your full name and address and the title of the scheme that you are referring to and details will be sent in the post. The proposals may also be viewed on-line at: [www.trafford.gov.uk/trafficregulationorders](http://www.trafford.gov.uk/trafficregulationorders).

Any objections to the proposals, together with the grounds on which they are made, should be sent, in writing, to the address below or by e-mail to [traffordtraffic@amey.co.uk](mailto:traffordtraffic@amey.co.uk) by 29<sup>th</sup> October 2020.

Dated: 8<sup>th</sup> October 2020

One Trafford/Trafford Council, Traffic Section, Tatton House, Caldey Road, Manchester, M23 9LF

**BOROUGH OF TRAFFORD (PROHIBITION OF WAITING AND LOADING  
AND PROVISION OF PARKING) ORDER 2001  
(AMENDMENT NO 231) ORDER 20??**

Trafford Borough Council in exercise of its powers under Sections 1, 2, 4, 32, 35, 45, 46, 47, 49 and 53 of the Road Traffic Regulation Act 1984, as amended, (the Act of 1984) and Part IV of Schedule 9 to the Act of 1984 and of all other enabling powers and after consultation with the Chief Officer of Police for Greater Manchester in accordance with Part III of Schedule 9 to the Act of 1984, hereby makes the following Order:

**PART I - GENERAL**

1. This Order shall come into operation on 20?? and may be cited as the Borough of Trafford (Prohibition of Waiting and Loading and Provision of Parking Order 2001)(Amendment No 231) Order 20??.
2. This Order forms an amendment to the provisions of the Borough of Trafford (Prohibition of Waiting and Loading and Provision of Parking) Order 2001, as amended, ("the 2001 Order").
3. The Interpretation Act 1978 shall apply for the interpretation of this Order as it applies for the interpretation of an Act of Parliament.
4. The expressions, definitions and interpretations specified in Article 4 of the 2001 Order shall apply equally to this Order.

**PART II - AMENDMENTS**

5. The 2001 Order is hereby amended to include the lengths of roads specified in Schedule 1 to this Order, with the following provisions denoted by the corresponding codes:-
 

i)	No Waiting At Any Time	Code -	7A
ii)	No Waiting and No Loading At Any Time	Code -	7A7A
iii)	School Entrance – No stopping, Mon-Fri, 8am – 5pm	Code -	SS
iv)	Residents' Parking Area B Match Day Restrictions	Code -	RPB
v)	Disabled Residents' Permit C Parking At Any Time	Code -	RPC
6. The lengths of road specified in Schedule 2 to this Order are deleted from the 2001 Order and the provisions of the 2001 Order do not apply to the said lengths of road.
7. The provisions of Articles 5, 6, 7, 8, 9, 10, 11, 12, 13, 14, 15, 16, 16A, 17, 18, 19, 20, 21, 22, 23 and 24 of the 2001 Order, as amended, apply to the lengths of road specified in Schedule 1 to this Order.
8. Save as amended by this Order the provisions of the 2001 Order remain in force.

**SCHEDULE 1**

**Do you want them scheduled like this**

**Schedule 1a - Proposed**

Street	Side	From	To	Code
Northumberland Road, Old Trafford	west	A point 62 metres north of its junction with Ayres Road	A point 100 metres north of its junction with Ayres Road	SS

**Schedule 1b – Proposed**

Street	Side	From	To	Code
Northumberland Road, Old Trafford	west	A point 100 metres north of its junction with Ayres Road	A point 107 metres north of its junction with Ayres Road	7A7A

**Schedule 1c - Proposed**

Street	Side	From	To	Code
A538 Hale Road, Hale Barns	south east	Its junction with High Elm Road	A point 15 metres southeast of its junction with High Elm Road	7A
A538 Hale Road, Hale Barns	south east	Its junction with High Elm Road	A point 10 metres north west of its junction with High Elm Road	7A
High Elm Road, Hale Barns	south east	Its junction with A538 Hale Road	A point 18 metres south of its junction with A538 Hale Road	7A
High Elm Road, Hale Barns	north west	Its junction with A538 Hale Road	A point 16 metres south of its junction with A538 Hale Road	7A
High Elm Road, Hale Barns	south east	Its junction with Warren Drive	A point 15 metres northeast of its junction with Warren Drive	7A
High Elm Road, Hale Barns	south east	Its junction with Warren Drive	A point 10 metres southwest of its junction with Warren Drive	7A
High Elm Road, Hale Barns	north east	Its junction with Elmridge Drive	A point 5 metres southeast of its junction with Elmridge Drive	7A
High Elm Road, Hale Barns	north east	Its junction with Elmridge Drive	A point 5 metres northwest of its junction with Elmridge Drive	7A
Elmridge Drive, Hale Barns	both	Its junction with High Elm Road	A point 5 metres northeast of its junction with High Elm Road	7A
Elmridge Drive, Hale Barns	south east	Its junction with Wilton Drive	A point 5 metres north east of its junction with Wilton Drive	7A
Elmridge Drive, Hale Barns	south east	Its junction with Wilton Drive	A point 5 metres south west of its junction with Wilton Drive	7A
Wilton Drive, Hale Barns	both	Its junction with Elmridge Drive	A point 5 metres south east of its junction with Elmridge Drive	7A

**Schedule 1d - Proposed**

Street	Side	From	To	Code
Harcourt Street, Gorse Hill, Stretford	south east	a point 5 metres southwest of its junction with Taylors Road	a point 105 metres southwest of its junction with Taylors Road	RPB
Harcourt Street, Gorse Hill, Stretford	south east	a point 105 metres southwest of its junction with Taylors Road	a point 111 metres southwest of its junction with Taylors Road	RPC
Harcourt Street, Gorse Hill, Stretford	south east	a point 111 metres southwest of its junction with Taylors Road	a point 5 metres northeast of its junction with Thomas Street	RPB

**SCHEDULE 2****Schedule 2a - Proposed Revocation**

Street	Side	From	To	Code
Harcourt Street, Gorse Hill, Stretford	south east	a point 5 metres southwest of its junction with Taylors Road	a point 5 metres northeast of its junction with Thomas Street	RPB

**THE COMMON SEAL of  
TRAFFORD BOROUGH COUNCIL**

was hereunto affixed this        day of                                201?  
in the presence of: -

AUTHORISED SIGNATORY

## **STATEMENT OF REASONS**

Seymour Park Community Primary School, Stretford has 663 pupils ranging from 3-11 years of age. Owing to continuing traffic and parking issues associated with the school, the head teacher has requested that parking restrictions be installed as he feels parking at the pedestrian entrance is a danger for the pupils.

Many roads near the school generally experience an increase in traffic during the school's pick up and drop off times, especially outside the pedestrian entrance. It is considered that this parking is detrimental to road and pedestrian safety.

The pedestrian entrances are located on Northumberland Road. An existing 'School Keep Clear' road marking (No stopping, Monday – Friday, 8am – 5pm) protects one of the pedestrian entrances, however, vehicles park outside the second pedestrian entrance, often double parking making it very dangerous for pedestrians.

The new School Keep Clear marking is proposed to be south of the existing speed cushion and it is proposed to fill the resulting gap between the two School Keep Clear markings with a length of No waiting/No loading at any time restriction. This is to ensure that vehicles will not park over the speed cushion between the School Keep Clear markings.

The introduction of these proposals would lead to the removal of a length of cycle lane, however, the proposed restrictions would stop parking outside both pedestrian entrances making it safer for pupils.

## **STATEMENT OF REASONS**

The Council has been contacted by residents and ward members regarding inconsiderate parking in the High Elm Road area of Hale Barns. A subsequent informal consultation also raised similar issues.

Residents have mentioned that there are issues concerned with parking from people using Manchester Airport, who often leave their vehicles for long periods of time close to the junctions of High Elm Road/Hale Road and High Elm Road/Warren Drive. This parking is restricting visibility for vehicles negotiating these junctions which compromises road safety.

Parking predominantly at the opening and closing times of Elmridge Primary School close to the junctions of High Elm Road/Elmridge Drive and Elmridge Drive/Wilton Drive is restricting access and visibility for pedestrians and vehicles, which compromises road safety for both pedestrians and vehicles.

The introduction of the proposed 'no waiting at any time' restrictions will prevent this obstructive parking and increase visibility, which will promote safer vehicular and pedestrian access/egress at these junctions.

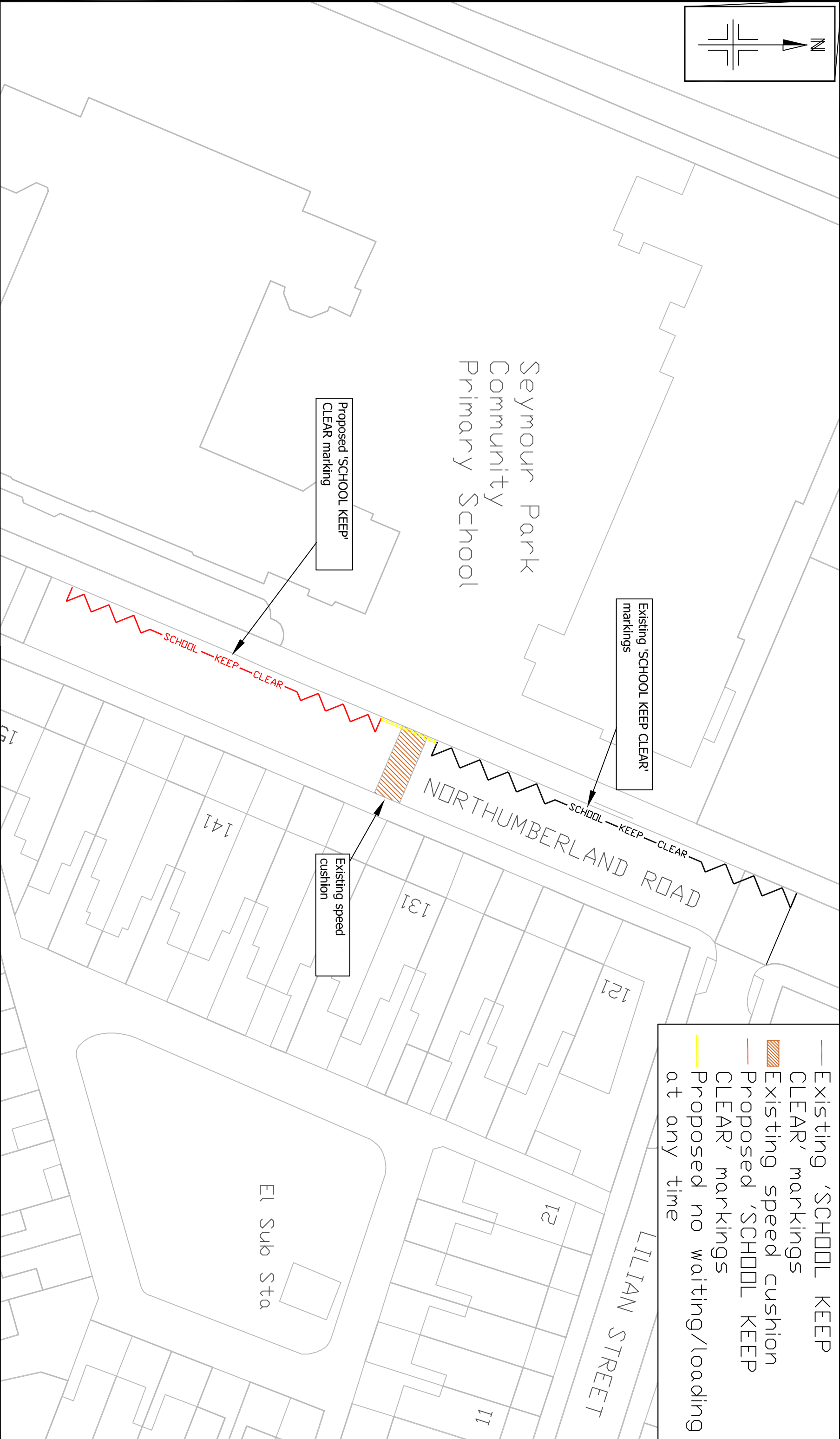
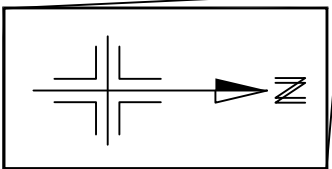
## **STATEMENT OF REASONS**

A request has been received from a disabled resident of Harcourt Street, Gorse Hill, Stretford, who is a blue badge holder, for consideration to be given to the provision of a disabled persons' permit parking space close to their property.

Harcourt Street is located within 'Zone B' of the Gorse Hill Residents' Parking Scheme and, as such, will require an amendment to the Traffic Order, if a disabled permit parking space is to be introduced at this location.

The disabled parking spaces within 'Zone B' are designated 'Zone C' and are operative on a 24-hour basis. The permits issued to the disabled residents differ to those valid for match day restrictions although holders of 'Zone C' permits are also allowed to park in areas where match day restrictions apply.

It is proposed therefore, to amend the Schedule to the Borough of Trafford (Prohibition of Waiting and Loading and Provision of Parking) Order 2001, as amended, in order to introduce a 'Zone C' permit parking space, at this location, and if implemented to invite the applicant to apply for the relevant permit.



- Existing 'SCHOOL KEEP CLEAR' markings
- ▨ Existing speed cushion
- Proposed 'SCHOOL KEEP CLEAR' markings
- Proposed no waiting/loading at any time

Reproduced from the Ordnance Survey mapping with the permission of the Controller of Her Majesty's Stationary Office © Crown copyright. Unauthorised reproduction infringes Crown copyright and may lead to Prosecution or civil proceedings. OS Licence No. 100023172 2018

Notes: No Dimensions to be scaled from this drawing. All Dimensions are to be checked on site.

REV.	DATE	REVISION DETAILS

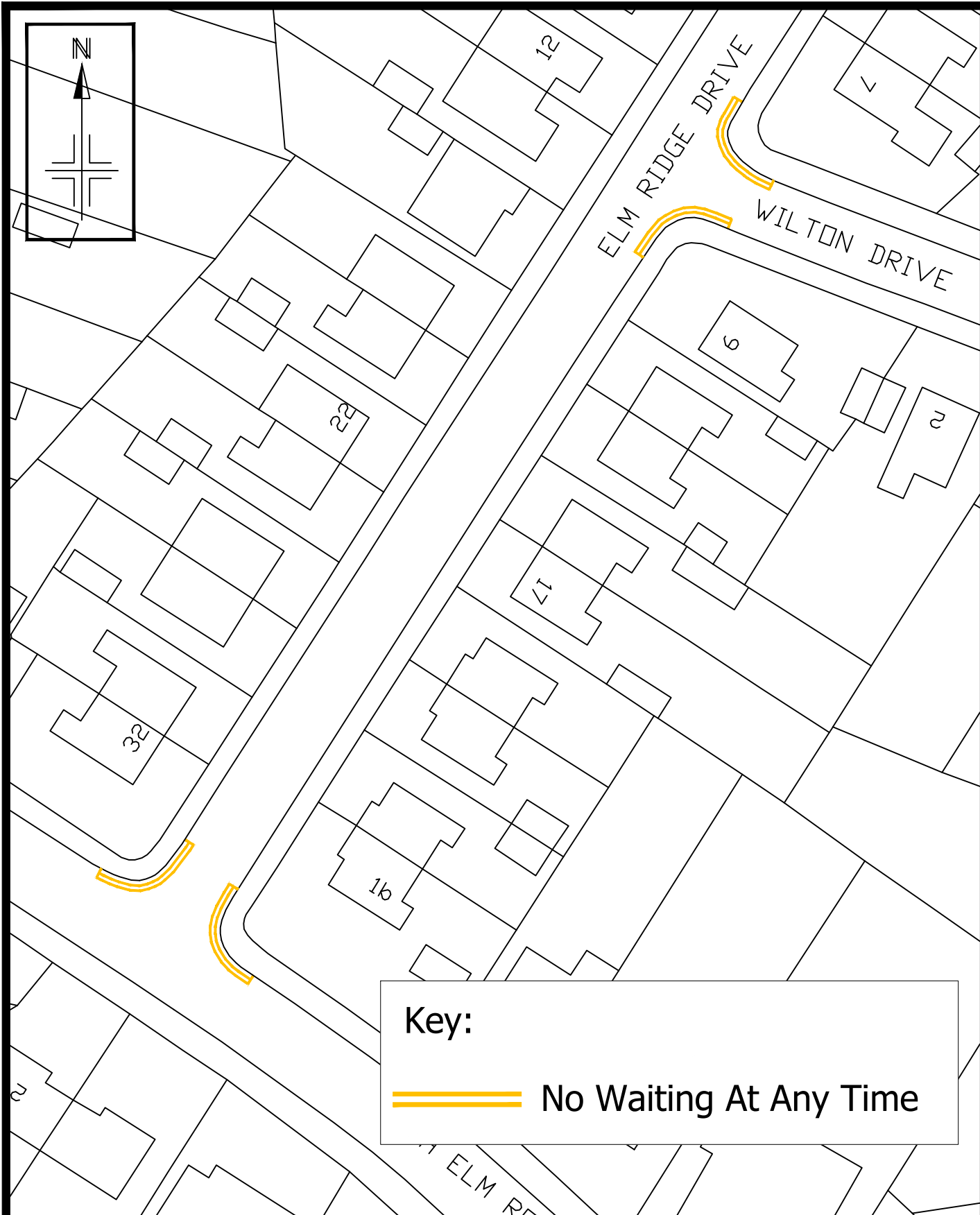
DRAWN KS	CHECKED BV	APPROVED KH	DRAWN	CHECKED	APPROVED
SCALE nts@A3	DRAWING NO. E9127	REVISION A			
DATE Jan 20	FILE PATH				


**PROJECT & TITLE**  
**Northumberland Road, Stretford**  
**School keep clear marking**  
**No waiting/loading at any time restriction**

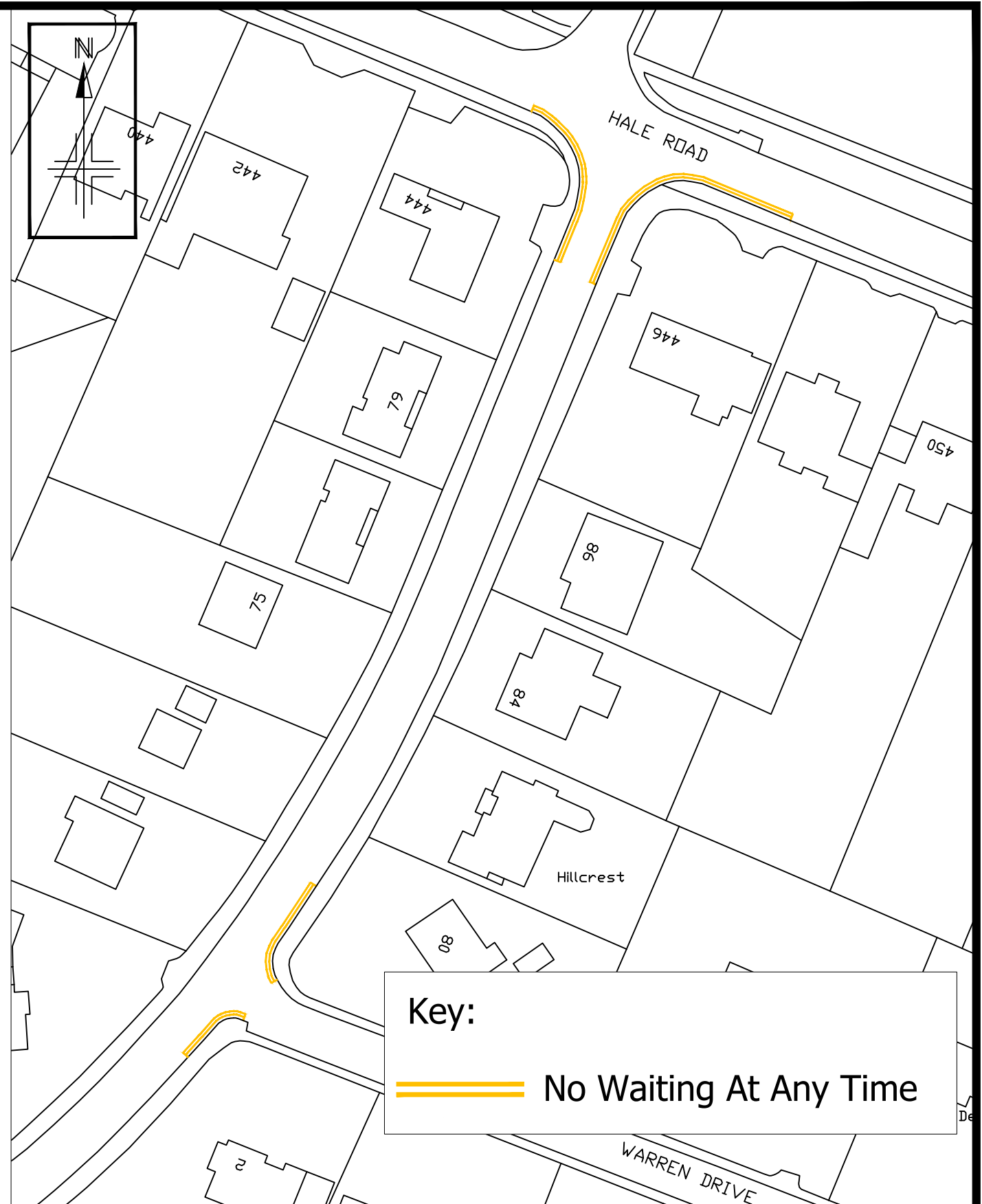



DRAWN KS	CHECKED BV	APPROVED KH	DRAWN	CHECKED	APPROVED
SCALE nts@A3	DRAWING NO. E9127	REVISION A			
DATE Jan 20	FILE PATH				





**Key:**  
 No Waiting At Any Time



**Key:**  
 No Waiting At Any Time

Reproduced from the Ordnance Survey mapping with the permission of the Controller of Her Majesty's Stationery Office © Crown copyright. Unauthorised reproduction infringes Crown copyright and may lead to prosecution or civil proceedings. Trafford Borough Council OS Licence No. LA076392 2018

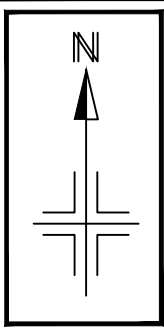
Notes: No Dimensions to be scaled from this drawing. All Dimensions are to be checked on site.

REV.	DATE	REVISION DETAILS	DRAWN	CHECKED	APPROVED

**PROJECT & TITLE**  
 High Elm Road Area, Hale Barns  
 Proposed Waiting Restrictions  
 Location Plan



DRAWN BF	CHECKED SA	APPROVED ST
SCALE NTS	DRAWING NO. E9086-F	
DATE Aug 19	REVISION -	
FILE PATH \\11THM-PR5001\Highway\Consulting\00 Work Areas\Traffic & Transportation\00 Capital Projects\TRO Works Programme\High Elm Road SA\03 AutoCAD\02 Work Area\Live Dwg>		



**Key**

- Proposed residents' permit parking bay
- Existing Residents' Match Day Permit Parking Scheme
- Proposed post and sign

HARCOURT STREET

42

38

34

6m

39

41

35

33

31

28



2.3m

Reproduced from the Ordnance Survey mapping with the permission of the Controller of Her Majesty's Stationery Office © Crown copyright. Unauthorised reproduction infringes Crown copyright and may lead to prosecution or civil proceedings. Trafford Borough Council OS Licence No. LA076392 1999

Notes: No Dimensions to be scaled from this drawing. All Dimensions are to be checked on site.

REV.	DATE	REVISION DETAILS	DRAWN	CHECKED	APPROVED

**PROJECT & TITLE**  
 35 Harcourt Street, Gorse Hill  
 Proposed residents' permit parking bay



DRAWN KS	CHECKED BV	APPROVED DS	REVISION
SCALE NTS	DRAWING NO. <b>E9188</b>		<b>A</b>
DATE July 20	FILE PATH		
<small>R:\18\Environment\Bull Environment\Traffic &amp; Transport\01 FILES - Street\Harcourt Street - Shetford - S0260735 RPC exp 15 08 2022 request July 2020 RAG 7054</small>			