

**BOROUGH OF TRAFFORD (PROHIBITION OF WAITING AND LOADING AND PROVISION OF PARKING) ORDER 2001 (AMENDMENT NO 231)(PART A) ORDER 2021**

**NOTICE IS HEREBY GIVEN** that Trafford Borough Council has made an Order under the Road Traffic Regulation Act 1984.

The effect of the Order will be to amend the Borough of Trafford (Prohibition of Waiting and Loading and Provision of Parking) Order 2001, as amended, (“the 2001 Order”) by the introduction or removal of the following provisions:

- |    |  |        |     |
|----|--|--------|-----|
| a) | No Waiting At Any Time                           | Code - | 7A  |
| b) | Residents’ Parking Area B Match Day Restrictions | Code - | RPB |
| c) | Disabled Residents’ Permit C Parking At Any Time | Code - | RPC |

on the lengths of roads specified in Schedules 1 and 2 hereto by the addition, to the Schedule to the 2001 Order, of the length of road specified in Schedule 1 below and by the removal, from the Schedule to the 2001 Order, of the length of road specified in Schedule 2 below.

**Schedule 1a - Proposed**

Street	Side	From	To	Code
A538 Hale Road, Hale Barns	south east	Its junction with High Elm Road	A point 15 metres southeast of its junction with High Elm Road	7A
A538 Hale Road, Hale Barns	south east	Its junction with High Elm Road	A point 10 metres north west of its junction with High Elm Road	7A
High Elm Road, Hale Barns	south east	Its junction with A538 Hale Road	A point 18 metres south of its junction with A538 Hale Road	7A
High Elm Road, Hale Barns	north west	Its junction with A538 Hale Road	A point 16 metres south of its junction with A538 Hale Road	7A
High Elm Road, Hale Barns	south east	Its junction with Warren Drive	A point 15 metres northeast of its junction with Warren Drive	7A
High Elm Road, Hale Barns	south east	Its junction with Warren Drive	A point 10 metres southwest of its junction with Warren Drive	7A
High Elm Road, Hale Barns	north east	Its junction with Elmridge Drive	A point 5 metres southeast of its junction with Elmridge Drive	7A
High Elm Road, Hale Barns	north east	Its junction with Elmridge Drive	A point 5 metres northwest of its junction with Elmridge Drive	7A
Elmridge Drive, Hale Barns	both	Its junction with High Elm Road	A point 5 metres northeast of its junction with High Elm Road	7A
Elmridge Drive, Hale Barns	south east	Its junction with Wilton Drive	A point 5 metres north east of its junction with Wilton Drive	7A
Elmridge Drive, Hale Barns	south east	Its junction with Wilton Drive	A point 5 metres south west of its junction with Wilton Drive	7A
Wilton Drive, Hale Barns	both	Its junction with Elmridge Drive	A point 5 metres south east of its junction with Elmridge Drive	7A

**Schedule 1b - Proposed**

Street	Side	From	To	Code
Harcourt Street, Gorse Hill, Stretford	south east	a point 5 metres southwest of its junction with Taylors Road	a point 105 metres southwest of its junction with Taylors Road	RPB
Harcourt Street, Gorse Hill, Stretford	south east	a point 105 metres southwest of its junction with Taylors Road	a point 111 metres southwest of its junction with Taylors Road	RPC
Harcourt Street, Gorse Hill, Stretford	south east	a point 111 metres southwest of its junction with Taylors Road	a point 5 metres northeast of its junction with Thomas Street	RPB

**SCHEDULE 2**

**Schedule 2a - Revocation**

Street	Side	From	To	Code
Harcourt Street, Gorse Hill, Stretford	south east	a point 5 metres southwest of its junction with Taylors Road	a point 5 metres northeast of its junction with Thomas Street	RPB

The proposals for Northumberland Road, Old Trafford, which were advertised at the same time as the above will be the subject of a future part order or abandoned.

The Order will come into operation on 30<sup>th</sup> July 2021 and a copy, together with a map showing the lengths of road to which it relates may be inspected at Altrincham and Stretford Libraries, during their normal opening hours and online at: [www.trafford.gov.uk/trafficregulationorders](http://www.trafford.gov.uk/trafficregulationorders)

If you wish to question the validity of the Order or any provision contained in it on the grounds that it is not within the powers contained in the Road Traffic Regulation Act 1984, or that any requirement of that Act or of any instrument made under it has not been complied with in relation to the Order you may, within six weeks from 22<sup>nd</sup> July 2021 apply to the High Court for that purpose.

Dated: 22<sup>nd</sup> July 2021

One Trafford/Trafford Council,  
Traffic Section,  
Tatton House,  
Caldey Road,  
Manchester,  
M23 9LF

Abbreviated for papers

**BOROUGH OF TRAFFORD (PROHIBITION OF WAITING AND LOADING AND PROVISION OF PARKING) ORDER 2001 (AMENDMENT NO 231)(PART A) ORDER 2021**

**NOTICE IS HEREBY GIVEN** that Trafford Borough Council has made an Order under the Road Traffic Regulation Act 1984.

The effect of the Order will be to amend the Borough of Trafford (Prohibition of Waiting and Loading and Provision of Parking) Order 2001, as amended, (“the 2001 Order”) by the introduction or removal of restrictions on lengths of A538 Hale Road, High Elm Road, Elmridge Drive and Wilton Drive, Hale Barns and Harcourt Street, Gorse Hill, Stretford.

The proposals for Northumberland Road, Old Trafford, which were advertised at the same time as the above, will be the subject of a future part order or abandoned.

The Order will come into operation on 30<sup>th</sup> July 2021 and a copy, together with a map showing the lengths of road to which it relates may be inspected at Altrincham and Stretford Libraries, during their normal opening hours and online at: [www.trafford.gov.uk/trafficregulationorders](http://www.trafford.gov.uk/trafficregulationorders)

If you wish to question the validity of the Order or any provision contained in it on the grounds that it is not within the powers contained in the Road Traffic Regulation Act 1984, or that any requirement of that Act or of any instrument made under it has not been complied with in relation to the Order you may, within six weeks from 22<sup>nd</sup> July 2021 apply to the High Court for that purpose.

Dated: 22<sup>nd</sup> July 2021

One Trafford/Trafford Council, Traffic Section, Tatton House, Caldey Road, Manchester, M23 9LF

## **STATEMENT OF REASONS**

The Council has been contacted by residents and ward members regarding inconsiderate parking in the High Elm Road area of Hale Barns. A subsequent informal consultation also raised similar issues.

Residents have mentioned that there are issues concerned with parking from people using Manchester Airport, who often leave their vehicles for long periods of time close to the junctions of High Elm Road/Hale Road and High Elm Road/Warren Drive. This parking is restricting visibility for vehicles negotiating these junctions which compromises road safety.

Parking predominantly at the opening and closing times of Elmridge Primary School close to the junctions of High Elm Road/Elmridge Drive and Elmridge Drive/Wilton Drive is restricting access and visibility for pedestrians and vehicles, which compromises road safety for both pedestrians and vehicles.

The introduction of the proposed 'no waiting at any time' restrictions will prevent this obstructive parking and increase visibility, which will promote safer vehicular and pedestrian access/egress at these junctions.

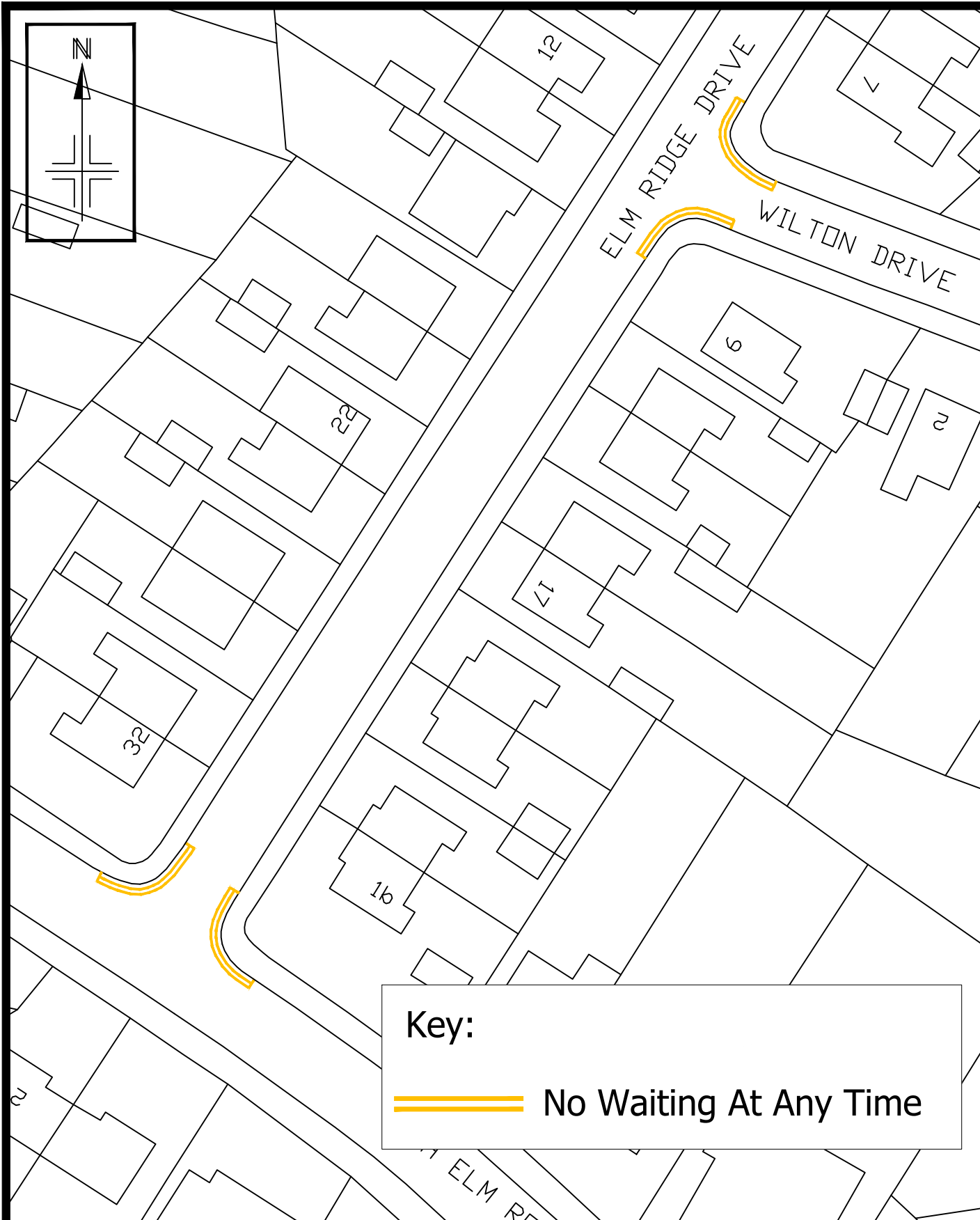
## **STATEMENT OF REASONS**


A request has been received from a disabled resident of Harcourt Street, Gorse Hill, Stretford, who is a blue badge holder, for consideration to be given to the provision of a disabled persons' permit parking space close to their property.

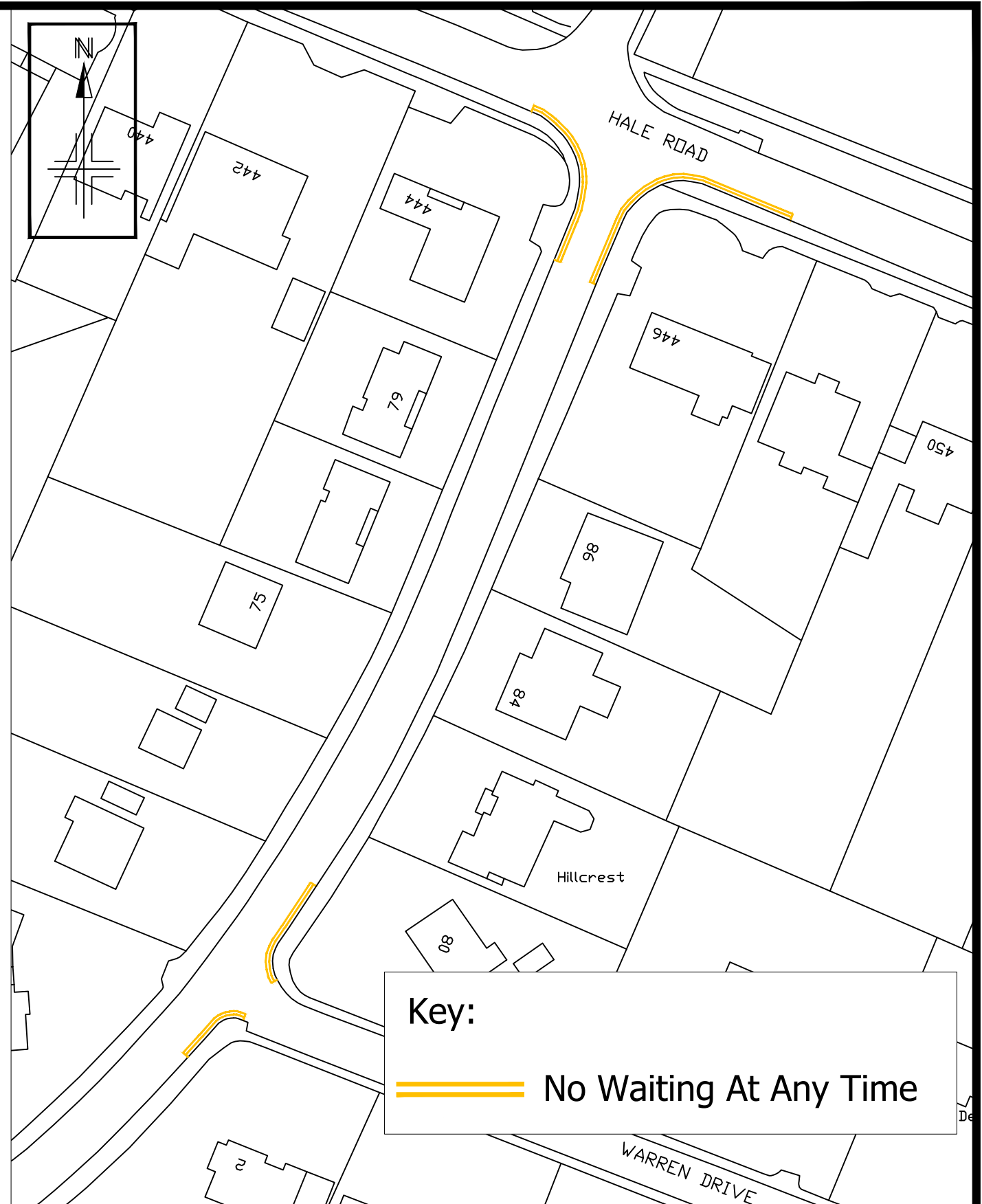
Harcourt Street is located within 'Zone B' of the Gorse Hill Residents' Parking Scheme and, as such, will require an amendment to the Traffic Order, if a disabled permit parking space is to be introduced at this location.


The disabled parking spaces within 'Zone B' are designated 'Zone C' and are operative on a 24-hour basis. The permits issued to the disabled residents differ to those valid for match day restrictions although holders of 'Zone C' permits are also allowed to park in areas where match day restrictions apply.

It is proposed therefore, to amend the Schedule to the Borough of Trafford (Prohibition of Waiting and Loading and Provision of Parking) Order 2001, as amended, in order to introduce a 'Zone C' permit parking space, at this location, and if implemented to invite the applicant to apply for the relevant permit.



**Key:**  
 No Waiting At Any Time



**Key:**  
 No Waiting At Any Time

Reproduced from the Ordnance Survey mapping with the permission of the Controller of Her Majesty's Stationery Office © Crown copyright. Unauthorised reproduction infringes Crown copyright and may lead to prosecution or civil proceedings. Trafford Borough Council OS Licence No. LA076392 2018

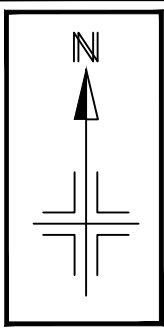
Notes: No Dimensions to be scaled from this drawing. All Dimensions are to be checked on site.

REV.	DATE	REVISION DETAILS	DRAWN	CHECKED	APPROVED

**PROJECT & TITLE**  
 High Elm Road Area, Hale Barns  
 Proposed Waiting Restrictions  
 Location Plan



DRAWN BF	CHECKED SA	APPROVED ST
SCALE NTS	DRAWING NO. E9086-F	
DATE Aug 19	REVISION -	
FILE PATH \\11THM-PR5001\Highway\Consulting\00 Work Areas\Traffic & Transportation\00 Capital Projects\TRO Works Programme\High Elm Road SA\03 AutoCAD\02 Work Area\Live Dwg>		



**Key**

- Proposed residents' permit parking bay
- Existing Residents' Match Day Permit Parking Scheme
- Proposed post and sign

HARCOURT STREET

42

38

34

6m

39

41

35

33

31

28



2.3m

Reproduced from the Ordnance Survey mapping with the permission of the Controller of Her Majesty's Stationery Office © Crown copyright. Unauthorised reproduction infringes Crown copyright and may lead to prosecution or civil proceedings. Trafford Borough Council OS Licence No. LA076392 1999

Notes: No Dimensions to be scaled from this drawing. All Dimensions are to be checked on site.

REV.	DATE	REVISION DETAILS	DRAWN	CHECKED	APPROVED

**PROJECT & TITLE**  
 35 Harcourt Street, Gorse Hill  
 Proposed residents' permit parking bay



DRAWN KS	CHECKED BV	APPROVED DS	REVISION
SCALE NTS	DRAWING NO. <b>E9188</b>		<b>A</b>
DATE July 20	FILE PATH		
R:\18\Environment\Bull Environment\Traffic & Transport\01 FILES - Street\Harcourt Street - Shetford - S0260735 RPC exp 15 08 2022 request July 2020 RAG 7054			

**BOROUGH OF TRAFFORD (PROHIBITION OF WAITING AND LOADING  
AND PROVISION OF PARKING) ORDER 2001  
(AMENDMENT NO 231)(PART A)ORDER 2021**

Trafford Borough Council in exercise of its powers under Sections 1, 2, 4, 32, 35, 45, 46, 47, 49 and 53 of the Road Traffic Regulation Act 1984, as amended, (the Act of 1984) and Part IV of Schedule 9 to the Act of 1984 and of all other enabling powers and after consultation with the Chief Officer of Police for Greater Manchester in accordance with Part III of Schedule 9 to the Act of 1984, hereby makes the following Order:

**PART I - GENERAL**

1. This Order shall come into operation on 30<sup>th</sup> July 2021 and may be cited as the Borough of Trafford (Prohibition of Waiting and Loading and Provision of Parking Order 2001)(Amendment No 231)(Part A) Order 2021.
2. This Order forms an amendment to the provisions of the Borough of Trafford (Prohibition of Waiting and Loading and Provision of Parking) Order 2001, as amended, ("the 2001 Order").
3. The Interpretation Act 1978 shall apply for the interpretation of this Order as it applies for the interpretation of an Act of Parliament.
4. The expressions, definitions and interpretations specified in Article 4 of the 2001 Order shall apply equally to this Order.

**PART II - AMENDMENTS**

5. The 2001 Order is hereby amended to include the lengths of roads specified in Schedule 1 to this Order, with the following provisions denoted by the corresponding codes:-

i)	No Waiting At Any Time	Code -	7A
ii)	Residents' Parking Area B Match Day Restrictions	Code -	RPB
iii)	Disabled Residents' Permit C Parking At Any Time	Code -	RPC
6. The length of road specified in Schedule 2 to this Order is deleted from the 2001 Order and the provisions of the 2001 Order do not apply to the said length of road.
7. The provisions of Articles 5, 6, 7, 8, 9, 10, 11, 12, 13, 14, 15, 16, 16A, 17, 18, 19, 20, 21, 22, 23 and 24 of the 2001 Order, as amended, apply to the lengths of road specified in Schedule 1 to this Order.
8. Save as amended by this Order the provisions of the 2001 Order remain in force.

## SCHEDULE 1

### Schedule 1a - Proposed

Street	Side	From	To	Code
A538 Hale Road, Hale Barns	south east	Its junction with High Elm Road	A point 15 metres southeast of its junction with High Elm Road	7A
A538 Hale Road, Hale Barns	south east	Its junction with High Elm Road	A point 10 metres north west of its junction with High Elm Road	7A
High Elm Road, Hale Barns	south east	Its junction with A538 Hale Road	A point 18 metres south of its junction with A538 Hale Road	7A
High Elm Road, Hale Barns	north west	Its junction with A538 Hale Road	A point 16 metres south of its junction with A538 Hale Road	7A
High Elm Road, Hale Barns	south east	Its junction with Warren Drive	A point 15 metres northeast of its junction with Warren Drive	7A
High Elm Road, Hale Barns	south east	Its junction with Warren Drive	A point 10 metres southwest of its junction with Warren Drive	7A
High Elm Road, Hale Barns	north east	Its junction with Elmridge Drive	A point 5 metres southeast of its junction with Elmridge Drive	7A
High Elm Road, Hale Barns	north east	Its junction with Elmridge Drive	A point 5 metres northwest of its junction with Elmridge Drive	7A
Elmridge Drive, Hale Barns	both	Its junction with High Elm Road	A point 5 metres northeast of its junction with High Elm Road	7A
Elmridge Drive, Hale Barns	south east	Its junction with Wilton Drive	A point 5 metres north east of its junction with Wilton Drive	7A
Elmridge Drive, Hale Barns	south east	Its junction with Wilton Drive	A point 5 metres south west of its junction with Wilton Drive	7A
Wilton Drive, Hale Barns	both	Its junction with Elmridge Drive	A point 5 metres south east of its junction with Elmridge Drive	7A

### Schedule 1b - Proposed

Street	Side	From	To	Code
Harcourt Street, Gorse Hill, Stretford	south east	a point 5 metres southwest of its junction with Taylors Road	a point 105 metres southwest of its junction with Taylors Road	RPB
Harcourt Street, Gorse Hill, Stretford	south east	a point 105 metres southwest of its junction with Taylors Road	a point 111 metres southwest of its junction with Taylors Road	RPC
Harcourt Street, Gorse Hill, Stretford	south east	a point 111 metres southwest of its junction with Taylors Road	a point 5 metres northeast of its junction with Thomas Street	RPB

## SCHEDULE 2

### Schedule 2a - Revocation

Street	Side	From	To	Code
Harcourt Street, Gorse Hill, Stretford	south east	a point 5 metres southwest of its junction with Taylors Road	a point 5 metres northeast of its junction with Thomas Street	RPB

THE COMMON SEAL of  
TRAFFORD BOROUGH COUNCIL

was hereunto affixed this 14 day of July 2021

in the presence of: -



AUTHORISED SIGNATORY

Julia Corbourn  
Solicitor



86961