

## BOROUGH OF TRAFFORD (PROHIBITION OF WAITING AND LOADING AND PROVISION OF PARKING) ORDER 2001 (AMENDMENT NO 217) ORDER 2023

**NOTICE IS HEREBY GIVEN** that Trafford Borough Council proposes to make an Order under the Road Traffic Regulation Act 1984.

The effect of the Order will be to amend the Borough of Trafford (Prohibition of Waiting and Loading and Provision of Parking) Order 2001, as amended, (“the 2001 Order”) by the introduction or removal of the following provisions:

- |    |   |        |      |
|----|---|--------|------|
| a) | No Waiting ‘At Any Time’, No Loading ‘At Any Time’  | Code - | 7A7A |
| b) | No Waiting ‘At Any Time’, and No Loading/Unloading, Mon-Fri, 7.30am-9.30am and 4pm-6.30pm | Code - | 7A5P |
| c) | No Waiting ‘At Any Time’  | Code - | 7A   |
| d) | No Waiting, Mon-Sun, 8am-6pm  | Code - | 7C   |
| e) | No Waiting, Mon-Sat, 8am-6pm  | Code - | 6C   |
| f) | No Waiting, Mon-Fri, 8am-9.30am and 3pm-4.30pm  | Code - | 5BBB |
| g) | No Waiting, Mon-Fri, 9am-5pm  | Code - | 5E   |
| h) | No Waiting, Mon-Fri, 9.30am-3pm   | Code - | 5N   |
| i) | No Waiting, Mon-Fri, 8am-5pm  | Code - | 5S   |
| j) | No Waiting and No Loading/Unloading, Mon-Fri, 7.30am-9.30am and 4pm-6.30pm                | Code - | 5P5P |
| k) | No Waiting Mon-Fri 8.15-9.15 and 3pm-5pm  | Code - | 5L   |

on the lengths of roads specified in Schedules 1a & 1b and 2a hereto, by the addition, to the Schedule to the 2001 Order, of the lengths of road specified in Schedules 1a & 1b below and by the removal, from the Schedule to the 2001 Order, of the length of road specified in Schedules 2a & 2b below.

### Schedule 1a - proposed

Street	Side	From	To	Code
Stanley Mount, Sale	Both	Its junction with Walton Road	A point 5 metres northwest of its junction with Walton Road	7A
Carnforth Drive, Sale	Both	Its junction with Walton Road	A point 5 metres northwest of its junction with Walton Road	7A
Walton Road, Sale	North west	A point 10 metres southwest of its junction with Stanley Mount	A point 10 metres northeast of its junction with Stanley Mount	7A
Walton Road, Sale	North west	A point 10 metres southwest of its junction with Carnforth Drive	A point 10 metres northeast of its junction with Carnforth Drive	7A
Walton Road, Sale	North west	A point 39 metres south of the southerly kerbline of Marsland Road	A point 10 metres northeast of its junction with Stanley Mount	6C
Walton Road, Sale	North west	A point 10 metres southwest of its junction with Stanley Mount	A point 33 metres south of its junction with Stanley Mount	6C
Walton Road, Sale	Both	A point 10 metres northeast of its junction with Raglan Road	A point 12 metres southwest of its junction with Raglan Road	7A
Walton Road, Sale	North west	A point 9 metres northeast of its junction with Alston Road	A point 8 metres southwest of its junction with Alston Road	7A
Alston Road, Sale	Both	Its junction with Walton Road	A point 8 metres northwest of its junction with Walton Road	7A
Fairlands Road, Sale	Both	Its junction with Walton Road	A point 7 metres northwest of its junction with Walton Road	7A
Walton Road, Sale	North west	A point 9 metres northeast of its junction with Fairlands Road	A point 9 metres southwest of its junction with Fairlands Road	7A
Walton Road, Sale	South east	A point 89 metres northeast of its junction with Marford Crescent	A point 71 metres northeast of its junction with Marford Crescent	7A
Walton Road, Sale	South east	A point 6 metres northeast of its junction with Marford Crescent	A point 6 metres southwest of its junction with Marford Crescent	7A
Marford Crescent, Sale	Both	Its junction with Walton Road	A point 7 metres southeast of its junction with Walton Road	7A

Walton Road, Sale	North west	A point 9 metres southwest of its junction with Homelands Road	A point 10 metres northeast of its junction with Homelands Road	7A
Homelands Road, Sale	Both	Its junction with Walton Road	A point 10 metres northwest of its junction with Walton Road	7A
Raglan Road, Sale	Both	A point 15 metres northwest of its junction with Walton Road	A point 8 metres southeast of its junction with Walton Road	7A
Raglan Road, Sale	Both	Its junction with Washway Road	A point 16 metres southeast of its junction with Washway Road	7A7A
Raglan Road, Sale	South west	A point 16 metres southeast of its junction with Washway Road	Its junction with Sale Heys Road	7A
Raglan Road, Sale	North east	A point 13 metres northwest of its junction with Campbell Road	A point 12 metres southeast of its junction with Campbell Road	7A
Campbell Road, Sale	South east	Its junction with Raglan Road	A point 48 metres northeast of its junction with Raglan Road	7A
Campbell Road, Sale	North west	Its junction with Raglan Road	A point 12 metres northeast of its junction with Raglan Road	7A

Schedule 2a – to be revoked

Street	Side	From	To	Code
Raglan Road, Sale	Both	Its junction with Washway Road	A point 16 metres southeast of its junction with Washway Road	5P5P
Walton Road	West	A point 39 metres south of the southerly kerbline of Marsland Road	A point 33 metres south of the southerly kerbline of Stanley Mount	5E

Schedule 1b – proposed

Street	Side	From	To	Code
Brookside Road, Sale	South west	A point 16 metres northwest of its junction with Wilford Avenue	Its junction with Wilford Avenue	7A
Brookside Road, Sale	North east	A point 8 metres northwest of its junction with Wilford Avenue	Its junction with Wilford Avenue	7A
Brookside Road, Sale	Both	A point 10 metres southeast of its junction with Woodbourne Road	A point 34 metres southeast of its junction with Woodbourne Road	7A
Brooklands Road, Sale	South west	A point 10 metres south of its junction with Framingham Road	A point 364 metres southeast of its junction with Woodbourne Road	7A
Brooklands Road, Sale	North east	A point 78m south of its junction with Marsland Road	A point 85 metres southeast of its junction with Norris Road	7A
Framingham Road, Sale	North east	A point 32 metres northwest of its junction with Woodbourne Road	A point 15 metres northwest of its junction with Woodbourne Road	7A
Framingham Road, Sale	Both	A point 15 metres southeast of its junction with Woodbourne Road	A point 27 metres southeast of its junction with Woodbourne Road	7A
Harrow Drive, Sale	Both	A point 8 metres northwest of its junction with Woodbourne Road	Its junction with Woodbourne Road	7A
Harrow Road, Sale	Both	Its junction with Woodbourne Road	A point 12 metres southeast of its junction with Woodbourne Road	7A
Harrow Road, Sale	South west	A point 4 metres northwest of its junction with Rugby Drive	A point 3 metres southeast of its junction with Rugby Drive	7A
Harrow Road, Sale	North east	A point 12 metres southeast of its junction with Woodbourne Road	A point 45 metres southeast of its junction with Woodbourne Road	5BBB
Harrow Road, Sale	South west	A point 20 metres northwest of its junction with Wilford Avenue	Its junction with Wilford Avenue	7A
Harrow Road, Sale	North east	A point 7 metres northwest of its junction with Wilford Avenue	Its junction with Wilford Avenue	7A

Rugby Drive, Sale	Both	A point 5 metres southwest of its junction with Harrow Road	Its junction with Harrow Road	7A
Shrewsbury Road, Sale	Both	Its junction with Woodbourne Road	A point 9 metres southeast of its junction with Woodbourne Road	7A
Wilford Avenue, Sale	North	A point 6 metres west of its junction with Harrow Road	A point 15 metres east of its junction with Harrow Road	7A
Wilford Avenue, Sale	North	A point 9 metres west of its junction with Brookside Road	A point 9 metres east of its junction with Brookside Road	7A
Woodbourne Road, Sale	North west	A point 22 metres southwest of its junction with Framingham Road	A point 15 metres southwest of its junction with Framingham Road	7A
Woodbourne Road, Sale	North west	A point 15 metres northeast of its junction with Framingham Road	A point 24 metres northeast of its junction with Framingham Road	7A
Woodbourne Road, Sale	South east	A point 10 metres southwest of its junction with Shrewsbury Road	A point 10 metres northwest of its junction with Shrewsbury Road	7A
Woodbourne Road, Sale	Both	A point 11 metres southwest of its junction with Harrow Drive	A point 8 metres northeast of its junction with Harrow Drive	7A
Woodbourne Road, Sale	South east	A point 112 metres southwest of its junction with Framingham Road	A point 100 metres southwest of its junction with Framingham Road	7A
Woodbourne Road, Sale	South east	A point 75 metres southwest of its junction with Framingham Road	A point 57 metres southwest of its junction with Framingham Road	7A
Woodbourne Road, Sale	South east	A point 32 metres southwest of its junction with Framingham Road	A point 10 metres southwest of its junction with Framingham Road	7A
Woodbourne Road, Sale	South east	A point 10 metres northeast of its junction with Framingham Road	A point 24 metres northeast of its junction with Framingham Road	7A
Woodbourne Road, Sale	South east	A point 24 metres northeast of its junction with Framingham Road	A point 10 metres southwest of its junction with Brooklands Road	6C

Schedule 2b – to be revoked

Street	Side	From	To	Code
Woodbourne Road, Sale	South	A point 32 metres west of its junction with Framingham Road	A point 10 metres west of its junction with Framingham Road	5L
Woodbourne Road, Sale	South	A point 10 metres east of its junction with Framingham Road	A point 10 metres west of its junction with Brooklands Road	6C

Schedule 1c - proposed

Street	Side	From	To	Code
Whitehall Road, Sale	North west	A point 15 metres northeast of its junction with Brooklands Road	A point 25 metres northeast of its junction with Brooklands Road	7A
Whitehall Road, Sale	North west	A point 25 metres northeast of its junction with Brooklands Road	A point 42 metres northeast of its junction with Brooklands Road	7C
Whitehall Road, Sale	South east	A point 30 metres northeast of its junction with Brooklands Road	A point 10 metres southwest of its junction with Alcester Road	7C
Whitehall Road, Sale	South east	A point 10 metres northeast of its junction with Alcester Road	A point 80 metres northeast of its junction with Alcester Road	7C
Georges Road, Sale	West	A point 16 metres north of its junction with Whitehall Road	A point 39 metres north of its junction with Whitehall Road	7C

Schedule 2c – to be revoked

Street	Side	From	To	Code
Georges Road, Sale	West	A point 16 metres from its junction with Whitehall Road	A point 39m from its junction with Whitehall Road	5S
Whitehall Road, Sale	North	A point 15 metres east of its junction with Brooklands Road	A point 42 metres east of its junction with Brooklands Road	5S
Woodbourne Road, Sale	South	A point 32 metres west of its junction with Framingham Road	A point 10 metres west of its junction with Framingham Road	5L

Woodbourne Road, Sale	South	A point 10 metres east of its junction with Framingham Road	A point 10 metres west of its junction with Brooklands Road	6C
-----------------------	-------	---	---	----

A copy of the Draft Order, together with a statement of reasons may be inspected at Altrincham Library and at Access Trafford, Sale Waterside, Sale during their normal opening hours. The Notice and plans can also be viewed on-line at: [www.trafford.gov.uk/trafficregulationorders](http://www.trafford.gov.uk/trafficregulationorders)

Any objections to the proposals, together with the grounds on which they are made, should be sent, in writing, to the address below or by e-mail to [traffordtraffic@amey.co.uk](mailto:traffordtraffic@amey.co.uk) by 11<sup>th</sup> September 2023.

Dated: 21<sup>st</sup> August 2023

One Trafford/Trafford Council,  
Traffic Section, Tatton House, Caldey Road, Manchester, M23 9LF

## **Abbreviated for papers**

### **BOROUGH OF TRAFFORD (PROHIBITION OF WAITING AND LOADING AND PROVISION OF PARKING) ORDER 2001 (AMENDMENT NO 217) ORDER 2023**

**NOTICE IS HEREBY GIVEN** that Trafford Borough Council proposes to make an Order under the Road Traffic Regulation Act 1984.

The effect of the Order will be to amend the Borough of Trafford (Prohibition of Waiting and Loading and Provision of Parking) Order 2001, as amended, ("the 2001 Order") by the introduction or removal of restrictions on lengths of Alston Road, Brooklands Road, Brookside Road, Campbell Road, Carnforth Drive, Fairlands Road, Framingham Road, Georges Road, Harrow Drive, Harrow Road, Homelands Road, Marford Crescent, Raglan Road, Rugby Drive, Shrewsbury Road, Stanley Mount, Walton Road, Wilford Avenue, Whitehall Road and Woodbourne Road, Sale.

A copy of the Draft Order, together with a statement of reasons may be inspected at Altrincham Library and at Access Trafford, Sale Waterside, Sale during their normal opening hours. The Notice and plans can also be viewed on-line at: [www.trafford.gov.uk/trafficregulationorders](http://www.trafford.gov.uk/trafficregulationorders)

Any objections to the proposals, together with the grounds on which they are made, should be sent, in writing, to the address below or by e-mail to [traffordtraffic@amey.co.uk](mailto:traffordtraffic@amey.co.uk) by 11<sup>th</sup> September 2023.

Dated: 21<sup>st</sup> August 2023

One Trafford/Trafford Council, Traffic Section, Tatton House, Caldey Road, Manchester, M23 9LF

**BOROUGH OF TRAFFORD (PROHIBITION OF WAITING AND LOADING  
AND PROVISION OF PARKING) ORDER 2001  
(AMENDMENT NO 217) ORDER 2023**

Trafford Borough Council in exercise of its powers under Sections 1, 2, 4, 32, 35, 45, 46, 47, 49 and 53 of the Road Traffic Regulation Act 1984, as amended, (the Act of 1984) and Part IV of Schedule 9 to the Act of 1984 and of all other enabling powers and after consultation with the Chief Officer of Police for Greater Manchester in accordance with Part III of Schedule 9 to the Act of 1984, hereby makes the following Order:

**PART I - GENERAL**

1. This Order shall come into operation on 2023 and may be cited as the Borough of Trafford (Prohibition of Waiting and Loading and Provision of Parking Order 2001)(Amendment No 217) Order 2023.
2. This Order forms an amendment to the provisions of the Borough of Trafford (Prohibition of Waiting and Loading and Provision of Parking) Order 2001, as amended, ("the 2001 Order").
3. The Interpretation Act 1978 shall apply for the interpretation of this Order as it applies for the interpretation of an Act of Parliament.
4. The expressions, definitions and interpretations specified in Article 4 of the 2001 Order shall apply equally to this Order.

**PART II - AMENDMENTS**

5. The 2001 Order is hereby amended to include the lengths of roads specified in Schedule 1 to this Order, with the following provisions denoted by the corresponding codes:-
 

i)	No Waiting 'At Any Time', No Loading 'At Any Time'	Code -	7A7A
ii)	No Waiting 'At Any Time', and No Loading/Unloading, Mon-Fri, 7.30am-9.30am and 4pm-6.30pm	Code -	7A5P
iii)	No Waiting 'At Any Time'	Code -	7A
iv)	No Waiting, Mon-Sun, 8am-6pm	Code -	7C
v)	No Waiting, Mon-Sat, 8am-6pm	Code -	6C
vi)	No Waiting, Mon-Fri, 8am-9.30am and 3pm-4.30pm	Code -	5BBB
vii)	No Waiting, Mon-Fri, 9am-5pm	Code -	5E
viii)	No Waiting, Mon-Fri, 9.30am-3pm	Code -	5N
ix)	No Waiting, Mon-Fri, 8am-5pm	Code -	5S
x)	No Waiting and No Loading/Unloading, Mon-Fri, 7.30am-9.30am and 4pm-6.30pm	Code -	5P5P
xi)	No Waiting Mon-Fri 8.15-9.15 and 3pm-5pm	Code -	5L
6. The lengths of road specified in Schedule 2 to this Order are deleted from the 2001 Order and the provisions of the 2001 Order do not apply to the said lengths of road.
7. The provisions of Articles 5, 6, 7, 8, 9, 10, 11, 12, 13, 14, 15, 16, 16A, 17, 18, 19, 20, 21, 22, 23 and 24 of the 2001 Order, as amended, apply to the lengths of road specified in Schedule 1 to this Order.
8. Save as amended by this Order the provisions of the 2001 Order remain in force.

**SCHEDULE**

**SCHEDULE1 - PROPOSED**

Schedule 1a

Street	Side	From	To	Code
Stanley Mount, Sale	Both	Its junction with Walton Road	A point 5 metres northwest of its junction with Walton Road	7A
Carnforth Drive, Sale	Both	Its junction with Walton Road	A point 5 metres northwest of its junction with Walton Road	7A
Walton Road, Sale	North west	A point 10 metres southwest of its junction with Stanley Mount	A point 10 metres northeast of its junction with Stanley Mount	7A

Walton Road, Sale	North west	A point 10 metres southwest of its junction with Carnforth Drive	A point 10 metres northeast of its junction with Carnforth Drive	7A
Walton Road, Sale	North west	A point 39 metres south of the southerly kerbline of Marsland Road	A point 10 metres northeast of its junction with Stanley Mount	6C
Walton Road, Sale	North west	A point 10 metres southwest of its junction with Stanley Mount	A point 33 metres south of its junction with Stanley Mount	6C
Walton Road, Sale	Both	A point 10 metres northeast of its junction with Raglan Road	A point 12 metres southwest of its junction with Raglan Road	7A
Walton Road, Sale	North west	A point 9 metres northeast of its junction with Alston Road	A point 8 metres southwest of its junction with Alston Road	7A
Alston Road, Sale	Both	Its junction with Walton Road	A point 8 metres northwest of its junction with Walton Road	7A
Fairlands Road, Sale	Both	Its junction with Walton Road	A point 7 metres northwest of its junction with Walton Road	7A
Walton Road, Sale	North west	A point 9 metres northeast of its junction with Fairlands Road	A point 9 metres southwest of its junction with Fairlands Road	7A
Walton Road, Sale	South east	A point 89 metres northeast of its junction with Marford Crescent	A point 71 metres northeast of its junction with Marford Crescent	7A
Walton Road, Sale	South east	A point 6 metres northeast of its junction with Marford Crescent	A point 6 metres southwest of its junction with Marford Crescent	7A
Marford Crescent, Sale	Both	Its junction with Walton Road	A point 7 metres southeast of its junction with Walton Road	7A
Walton Road, Sale	North west	A point 9 metres southwest of its junction with Homelands Road	A point 10 metres northeast of its junction with Homelands Road	7A
Homelands Road, Sale	Both	Its junction with Walton Road	A point 10 metres northwest of its junction with Walton Road	7A
Raglan Road, Sale	Both	A point 15 metres northwest of its junction with Walton Road	A point 8 metres southeast of its junction with Walton Road	7A
Raglan Road, Sale	Both	Its junction with Washway Road	A point 16 metres southeast of its junction with Washway Road	7A7A
Raglan Road, Sale	South west	A point 16 metres southeast of its junction with Washway Road	Its junction with Sale Heys Road	7A
Raglan Road, Sale	North east	A point 13 metres northwest of its junction with Campbell Road	A point 12 metres southeast of its junction with Campbell Road	7A
Campbell Road, Sale	South east	Its junction with Raglan Road	A point 48 metres northeast of its junction with Raglan Road	7A
Campbell Road, Sale	North west	Its junction with Raglan Road	A point 12 metres northeast of its junction with Raglan Road	7A

Schedule 1b

<b>Street</b>	<b>Side</b>	<b>From</b>	<b>To</b>	<b>Code</b>
Brookside Road, Sale	South west	A point 16 metres northwest of its junction with Wilford Avenue	Its junction with Wilford Avenue	7A
Brookside Road, Sale	North east	A point 8 metres northwest of its junction with Wilford Avenue	Its junction with Wilford Avenue	7A
Brookside Road, Sale	Both	A point 10 metres southeast of its junction with Woodbourne Road	A point 34 metres southeast of its junction with Woodbourne Road	7A
Brooklands Road, Sale	South west	A point 10 metres south of its junction with Framingham Road	A point 364 metres southeast of its junction with Woodbourne Road	7A
Brooklands Road, Sale	North east	A point 78m south of its junction with Marsland Road	A point 85 metres southeast of its junction with Norris Road	7A
Framingham Road, Sale	North east	A point 32 metres northwest of its junction with Woodbourne Road	A point 15 metres northwest of its junction with Woodbourne Road	7A

Framingham Road, Sale	Both	A point 15 metres southeast of its junction with Woodbourne Road	A point 27 metres southeast of its junction with Woodbourne Road	7A
Harrow Drive, Sale	Both	A point 8 metres northwest of its junction with Woodbourne Road	Its junction with Woodbourne Road	7A
Harrow Road, Sale	Both	Its junction with Woodbourne Road	A point 12 metres southeast of its junction with Woodbourne Road	7A
Harrow Road, Sale	South west	A point 4 metres northwest of its junction with Rugby Drive	A point 3 metres southeast of its junction with Rugby Drive	7A
Harrow Road, Sale	North east	A point 12 metres southeast of its junction with Woodbourne Road	A point 45 metres southeast of its junction with Woodbourne Road	5BBB
Harrow Road, Sale	South west	A point 20 metres northwest of its junction with Wilford Avenue	Its junction with Wilford Avenue	7A
Harrow Road, Sale	North east	A point 7 metres northwest of its junction with Wilford Avenue	Its junction with Wilford Avenue	7A
Rugby Drive, Sale	Both	A point 5 metres southwest of its junction with Harrow Road	Its junction with Harrow Road	7A
Shrewsbury Road, Sale	Both	Its junction with Woodbourne Road	A point 9 metres southeast of its junction with Woodbourne Road	7A
Wilford Avenue, Sale	North	A point 6 metres west of its junction with Harrow Road	A point 15 metres east of its junction with Harrow Road	7A
Wilford Avenue, Sale	North	A point 9 metres west of its junction with Brookside Road	A point 9 metres east of its junction with Brookside Road	7A
Woodbourne Road, Sale	North west	A point 22 metres southwest of its junction with Framingham Road	A point 15 metres southwest of its junction with Framingham Road	7A
Woodbourne Road, Sale	North west	A point 15 metres northeast of its junction with Framingham Road	A point 24 metres northeast of its junction with Framingham Road	7A
Woodbourne Road, Sale	South east	A point 10 metres southwest of its junction with Shrewsbury Road	A point 10 metres northwest of its junction with Shrewsbury Road	7A
Woodbourne Road, Sale	Both	A point 11 metres southwest of its junction with Harrow Drive	A point 8 metres northeast of its junction with Harrow Drive	7A
Woodbourne Road, Sale	South east	A point 112 metres southwest of its junction with Framingham Road	A point 100 metres southwest of its junction with Framingham Road	7A
Woodbourne Road, Sale	South east	A point 75 metres southwest of its junction with Framingham Road	A point 57 metres southwest of its junction with Framingham Road	7A
Woodbourne Road, Sale	South east	A point 32 metres southwest of its junction with Framingham Road	A point 10 metres southwest of its junction with Framingham Road	7A
Woodbourne Road, Sale	South east	A point 10 metres northeast of its junction with Framingham Road	A point 24 metres northeast of its junction with Framingham Road	7A
Woodbourne Road, Sale	South east	A point 24 metres northeast of its junction with Framingham Road	A point 10 metres southwest of its junction with Brooklands Road	6C

Schedule 1c

Street	Side	From	To	Code
Whitehall Road, Sale	North west	A point 15 metres northeast of its junction with Brooklands Road	A point 25 metres northeast of its junction with Brooklands Road	7A
Whitehall Road, Sale	North west	A point 25 metres northeast of its junction with Brooklands Road	A point 42 metres northeast of its junction with Brooklands Road	7C
Whitehall Road, Sale	South east	A point 30 metres northeast of its junction with Brooklands Road	A point 10 metres southwest of its junction with Alcester Road	7C
Whitehall Road, Sale	South east	A point 10 metres northeast of its junction with Alcester Road	A point 80 metres northeast of its junction with Alcester Road	7C
Georges Road, Sale	West	A point 16 metres north of its junction with Whitehall Road	A point 39 metres north of its junction with Whitehall Road	7C



SCHEDULE 2 – TO BE REVOKED

Schedule 2a

Street	Side	From	To	Code
Raglan Road, Sale	Both	Its junction with Washway Road	A point 16 metres southeast of its junction with Washway Road	5P5P
Walton Road	West	A point 39 metres south of the southerly kerbline of Marsland Road	A point 33 metres south of the southerly kerbline of Stanley Mount	5E

Schedule 2b

Street	Side	From	To	Code
Woodbourne Road, Sale	South	A point 32 metres west of its junction with Framingham Road	A point 10 metres west of its junction with Framingham Road	5L
Woodbourne Road, Sale	South	A point 10 metres east of its junction with Framingham Road	A point 10 metres west of its junction with Brooklands Road	6C

Schedule 2c

Street	Side	From	To	Code
Georges Road, Sale	West	A point 16 metres from its junction with Whitehall Road	A point 39m from its junction with Whitehall Road	5S
Whitehall Road, Sale	North	A point 15 metres east of its junction with Brooklands Road	A point 42 metres east of its junction with Brooklands Road	5S
Woodbourne Road, Sale	South	A point 32 metres west of its junction with Framingham Road	A point 10 metres west of its junction with Framingham Road	5L
Woodbourne Road, Sale	South	A point 10 metres east of its junction with Framingham Road	A point 10 metres west of its junction with Brooklands Road	6C

**THE COMMON SEAL of  
TRAFFORD BOROUGH COUNCIL**

was hereunto affixed this                      day of                      2023

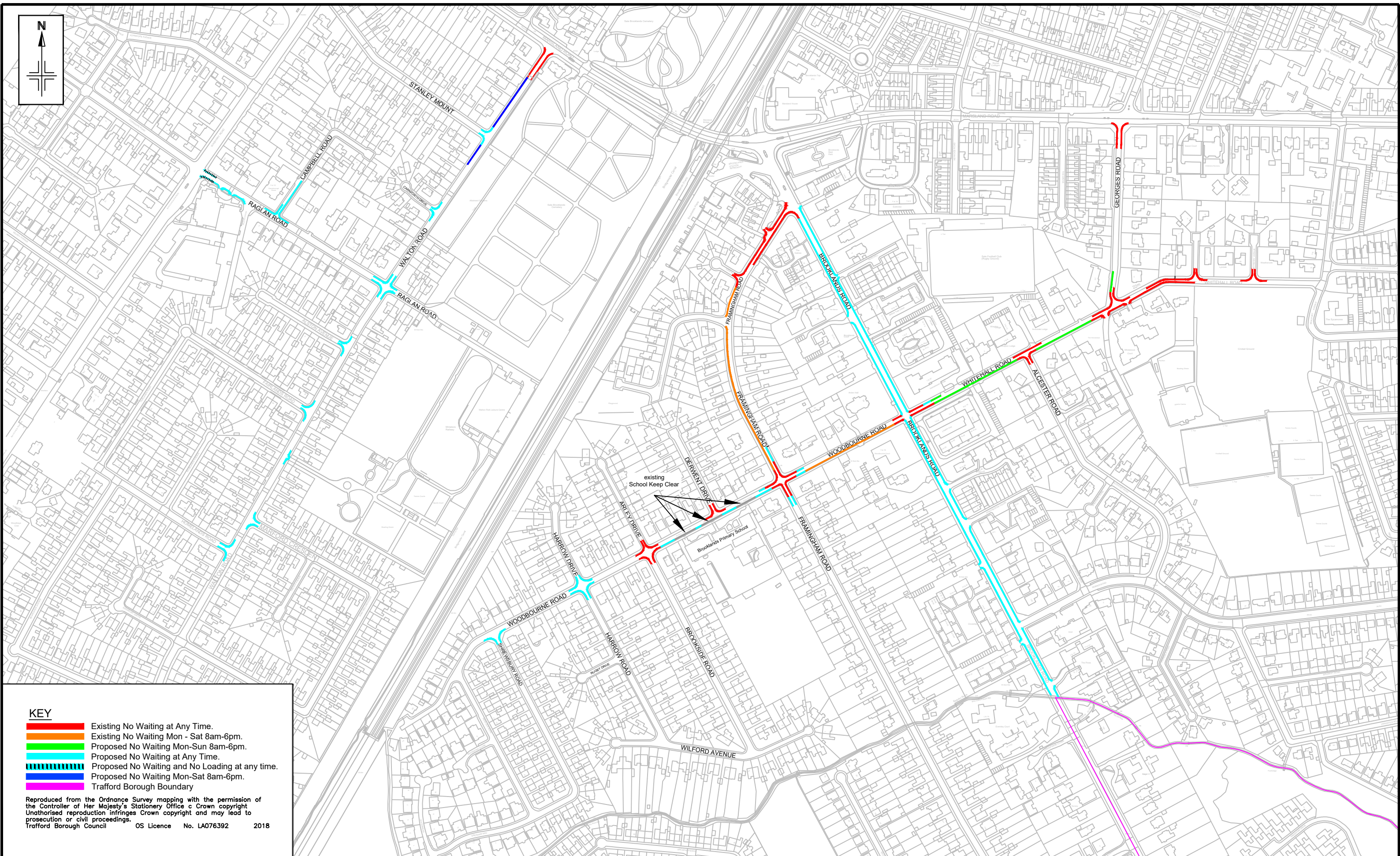
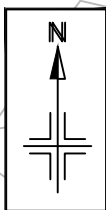
in the presence of: -

**AUTHORISED SIGNATORY**

## **STATEMENT OF REASONS**

Several requests have been received by the Council to manage the kerbside parking provisions in the Brooklands ward. The issues raised are related to congestion caused by commuter parking and parking at peak times close to Brooklands Primary School.

The Council proposes to introduce a series of waiting restrictions to manage congestion while improving traffic flow, and ensure vehicles are parked in a safe manner. The measures include the introduction of no waiting at any time restrictions and other daytime no waiting restrictions.



- KEY**
- Existing No Waiting at Any Time.
  - Existing No Waiting Mon - Sat 8am-6pm.
  - Proposed No Waiting Mon-Sun 8am-6pm.
  - Proposed No Waiting at Any Time.
  - Proposed No Waiting and No Loading at any time.
  - Proposed No Waiting Mon-Sat 8am-6pm.
  - Trafford Borough Boundary

Reproduced from the Ordnance Survey mapping with the permission of the Controller of Her Majesty's Stationery Office c Crown copyright. Unauthorised reproduction infringes Crown copyright and may lead to prosecution or civil proceedings.  
Trafford Borough Council OS Licence No. LA076392 2018

# Framingham Rd area, Georges Road area and Walton Road area - Brooklands Proposed Waiting Restrictions

DRAWN KS	CHECKED JM	APPROVED KH
SCALE NTS	DRAWING NO. E6111 - 03A	
DATE Jan 22		
FILE PATH R:\BU\Environment\Built Environment\Traffic & Transportation\FILES - Schemes\1310 - Framingham Road Area		