

BOROUGH OF TRAFFORD (PROHIBITION OF WAITING AND LOADING AND PROVISION OF PARKING) ORDER 2001 (AMENDMENT NO 164)(PART B) ORDER 2015

NOTICE IS HEREBY GIVEN that Trafford Borough Council has made an Order under the Road Traffic Regulation Act 1984.

The effect of the Order will be to amend the Borough of Trafford (Prohibition of Waiting and Loading and Provision of Parking) Order 2001, as amended, ("the 2001 Order") by the introduction or removal of the following provisions:

- | | | | | |
|----|---|------|---|-----|
| a) | No Waiting at Any Time | Code | - | 7A |
| b) | No Waiting Mon – Sat 8am – 6pm | Code | - | 6C |
| c) | No Waiting Mon – Fri 8am – 5pm (1 st Sept – 31 st July) | Code | - | 5SN |
| d) | School Keep Clear Mon-Fri 8am -5pm | Code | - | SS |

on the lengths of roads specified in Schedules 1 and 2 hereto by the addition, to the Schedule to the 2001 Order, of the length of road specified in Schedule 1 below and by the removal, from the Schedule to the 2001 Order, of the lengths of road specified in Schedule 2 below.

Schedule 1a – Proposed

| Street | Side | From | To | Code |
|----------------------|-------|---|---|------|
| West Road, Bowdon | north | a point 31 metres east of its junction with South Road | a point 57 metres east of its junction with South Road | SS |

Schedule 1b - Proposed

| Street | Side | From | To | Code |
|-------------------------------|---------------|--|--|------|
| Woodville Road, Altrincham | south west | a point 93 metres east of its junction with St Margarets Road | its junction with Bowdon Road | 7A |
| Woodville Road, Altrincham | south west | its junction with Bowdon Road | a point 10 metres southeast of its junction with Bowdon Road | 7A |
| Woodville Road, Altrincham | south west | a point 10 metres southeast of its junction with Bowdon Road | its junction with Higher Downs | 6C |
| Woodville Road, Altrincham | north east | its junction with Bentinck Road | a point 11 metres southeast of its junction with Bentinck Road | 7A |
| Woodville Road, Altrincham | north east | a point 22 metres southeast of its junction with Bentinck Road | a point 49 metres southeast of its junction with Bentinck Close | 7A |
| Woodville Road, Altrincham | north east | a point 55 metres southeast of its junction with Bentinck Road | a point 66 metres southeast of its junction with Bentinck Road | 7A |
| Woodville Road, Altrincham | north east | a point 78 metres southeast of its junction with Bentinck Road | a point 105 metres southeast of its junction with Bentinck Road | 7A |
| Woodville Road, Altrincham | north east | a point 110 metres southeast of its junction with Bentinck Road | a point 105 metres northwest of its junction with The Downs | 7A |

Schedule 1c - Proposed

| Street | Side | From | To | Code |
|-------------------------|---------------|--|--|------|
| Langham Road, Bowdon | south west | a point 7 metres northwest of its junction with Vale Road | its junction with Vale Road | 7A |
| Vale Road, Bowdon | north west | its junction with Langham Road | a point 15 metres southwest of its junction with Langham Road | 7A |
| Vale Road, Bowdon | south east | its junction with Langham Road | a point 30 metres southwest of its junction with Langham Road | 7A |
| Langham Road, Bowdon | south west | its junction with Vale Road | a point 15 metres southeast of its junction with Vale Road | 7A |
| Apsley Grove, Bowdon | east | a point 10 metres north of its junction with Vale Road | its junction with Vale Road | 7A |
| Vale Road, Bowdon | north | its junction with Apsley Grove | a point 10 metres east of its junction with Apsley Grove | 7A |
| Apsley Grove, Bowdon | east | its junction with Vale Road | a point 10 metres south of its junction with Vale Road | 7A |
| Vale Road, Bowdon | south | its junction with Apsley Grove | a point 13 metres east of its junction with Apsley Grove | 7A |
| Apsley Grove, Bowdon | east | a point 11 metres north of its junction with Apsley Close | its junction with Apsley Close | 7A |
| Apsley Close, Bowdon | north | its junction with Apsley Grove | a point 10 metres east of its junction with Apsley Grove | 7A |
| Apsley Grove, Bowdon | east | its junction with Apsley Close | a point 12 metres south of its junction with Apsley Close | 7A |
| Apsley Close, Bowdon | south | its junction with Apsley Grove | a point 10 metres east of its | 7A |

| | | | | |
|--|------------|--|--|-----|
| Bowdon | | | junction with Apsley Grove | |
| Apsley Grove, Bowdon | east | a point 12 metres south of its junction with Apsley Close | a point 34 metres south of its junction with Apsley Close | 5SN |
| Apsley Grove, Bowdon | east | a point 34 metres south of its junction with Apsley Close | a point 39 metres south of its junction with Apsley Close | 7A |
| Apsley Grove, Bowdon | outer side | a point 15 metres north of the south-westerly corner of its southerly cul-de-sac end | a point 65 metres south of its junction with Apsley Close | SS |
| Apsley Grove, Bowdon | west | a point 127 metres south of its northwesterly corner of its northerly cul-de-sac end | a point 141 metres south of its northwesterly corner of its northerly cul-de-sac end | 7A |
| Apsley Grove, the turning circle at its southern end | | its entire circumference | | 7A |

Schedule 2a - To be revoked

| Street | Side | From | To | Code |
|----------------------------|------------|---|--|------|
| Woodville Road, Altrincham | south west | a point 93 metres east of its junction with St Margarets Road | its junction with Bowdon Road | 6C |
| Woodville Road, Altrincham | south | its junction with Bowdon Road | its junction with Higher Downs | 6C |
| Woodville Road, Altrincham | north east | a point 187 metres northwest of its junction with The Downs | to a point 105 metres northwest of its junction with The Downs | 6C |

Schedule 2b – To be revoked

| Street | Side | From | To | Code |
|----------------------|-------|--|--|------|
| Apsley Grove, Bowdon | outer | a point on the westerly side 18 metres north of the south-westerly corner of the cul-de-sac end, around the cul-de-sac end | a point on the easterly side 72 metres south of its southerly junction with Apsley Close | SS |

The proposals for Barton Dock Road/Trafford Boulevard, TP which were advertised at the same time as the above will be the subject of a future part order or abandoned.

The Order will come into operation on 22nd May 2015, and a copy, together with a map showing the lengths of road to which it relates may be inspected at Altrincham Access Trafford, Stamford New Road, Altrincham and at Access Trafford, Sale Waterside, Sale during their normal opening hours and online at:

www.trafford.gov.uk/trafficregulationorders as Borough of Trafford (Prohibition of Waiting and Loading and Provision of Parking) Order 2001 (Amendment No164)(Part B) Order 2015.

If you wish to question the validity of the Order or any provision contained in it on the grounds that it is not within the powers contained in the Road Traffic Regulation Act 1984, or that any requirement of that Act or of any instrument made under it has not been complied with in relation to the Order you may, within six weeks from 17th April 2015 apply to the High Court for that purpose.

Dated: 23rd April 2015

Contracts Director and Acting Head of Highways,
Trafford Council,
Waterside House,
Sale,
M33 7ZF

Abbreviated for papers

BOROUGH OF TRAFFORD (PROHIBITION OF WAITING AND LOADING AND PROVISION OF PARKING) ORDER 2001 (AMENDMENT NO 164)(PART B) ORDER 2015

NOTICE IS HEREBY GIVEN that Trafford Borough Council has made an Order under the Road Traffic Regulation Act 1984.

The effect of the Order will be to amend the Borough of Trafford (Prohibition of Waiting and Loading and Provision of Parking) Order 2001, as amended, ("the 2001 Order") by the introduction or removal of waiting restrictions along lengths of **Apsley Close, Apsley Grove, Langham Road, Vale Road and West Road, Bowdon and Woodville Road, Altrincham.**

The proposals for Barton Dock Road/Trafford Boulevard, TP which were advertised at the same time as the above will be the subject of a future part order or abandoned.

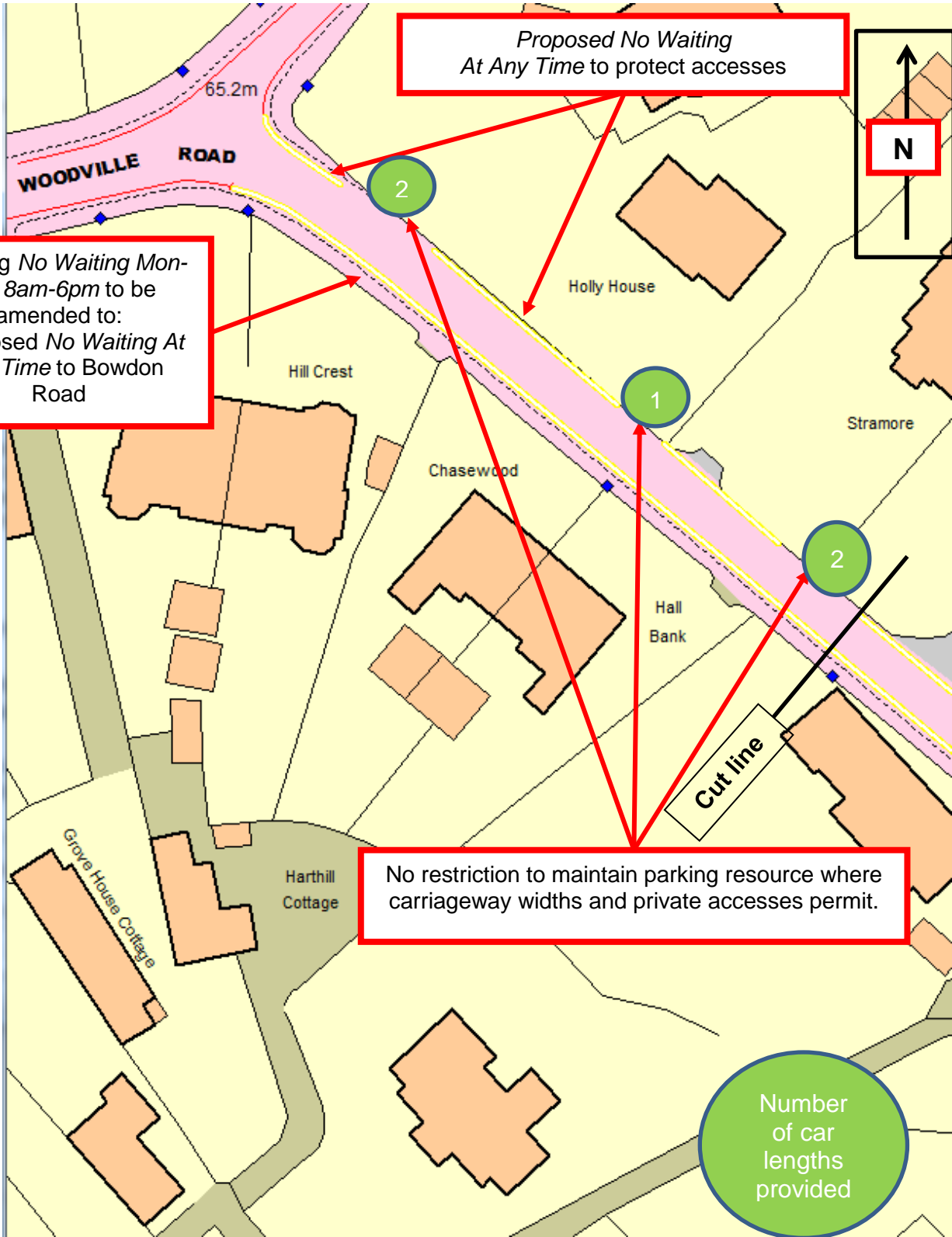
The Order will come into operation on 22nd May 2015, and a copy, together with a map showing the lengths of road to which it relates may be inspected at Altrincham Access Trafford, Stamford New Road, Altrincham and at Access Trafford, Sale Waterside, Sale during their normal opening hours and online at:

www.trafford.gov.uk/trafficregulationorders as Borough of Trafford (Prohibition of Waiting and Loading and Provision of Parking) Order 2001 (Amendment No164)(Part B) Order 2015.

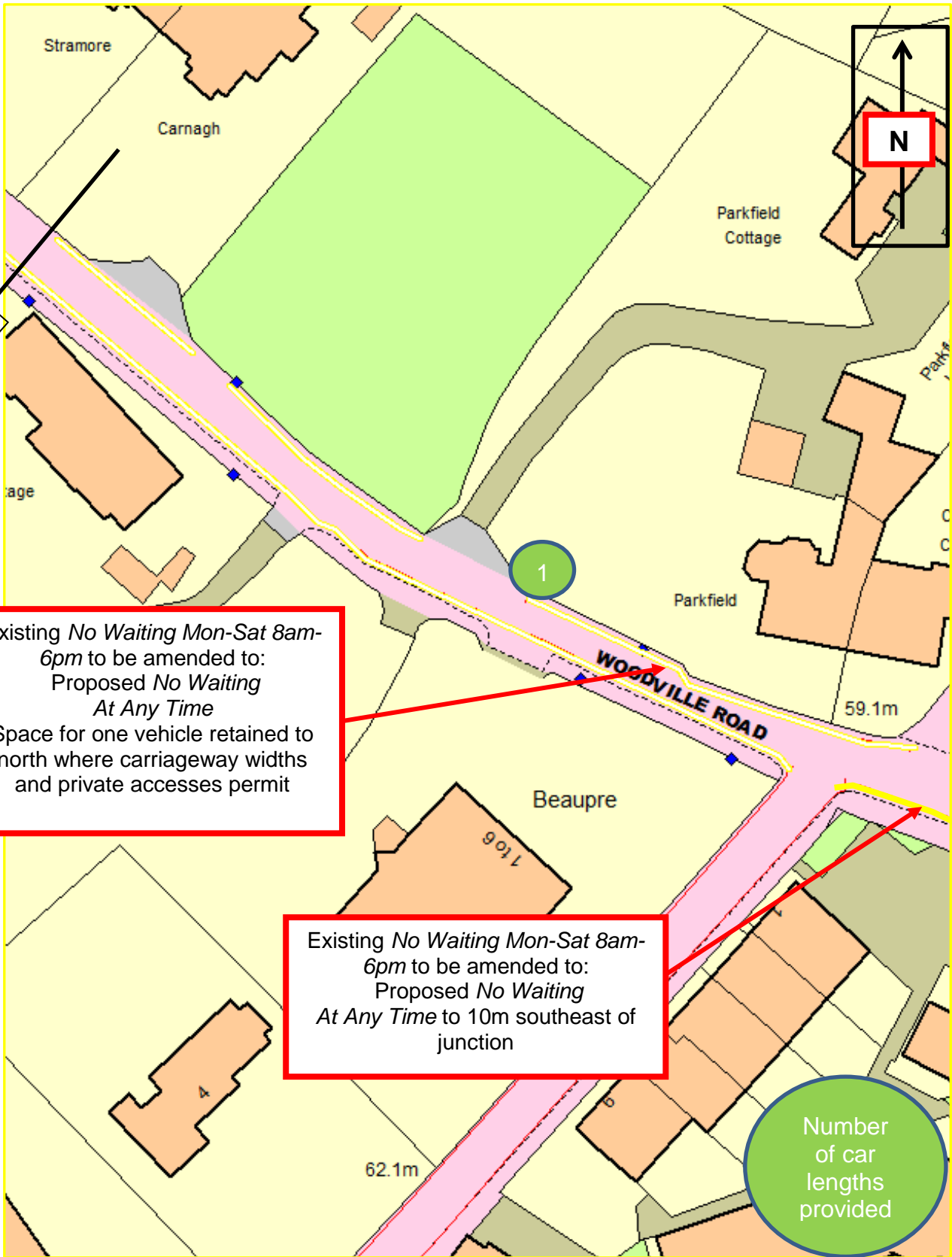
If you wish to question the validity of the Order or any provision contained in it on the grounds that it is not within the powers contained in the Road Traffic Regulation Act 1984, or that any requirement of that Act or of any instrument made under it has not been complied with in relation to the Order you may, within six weeks from 17th April 2015 apply to the High Court for that purpose.

Dated: 23rd April 2015

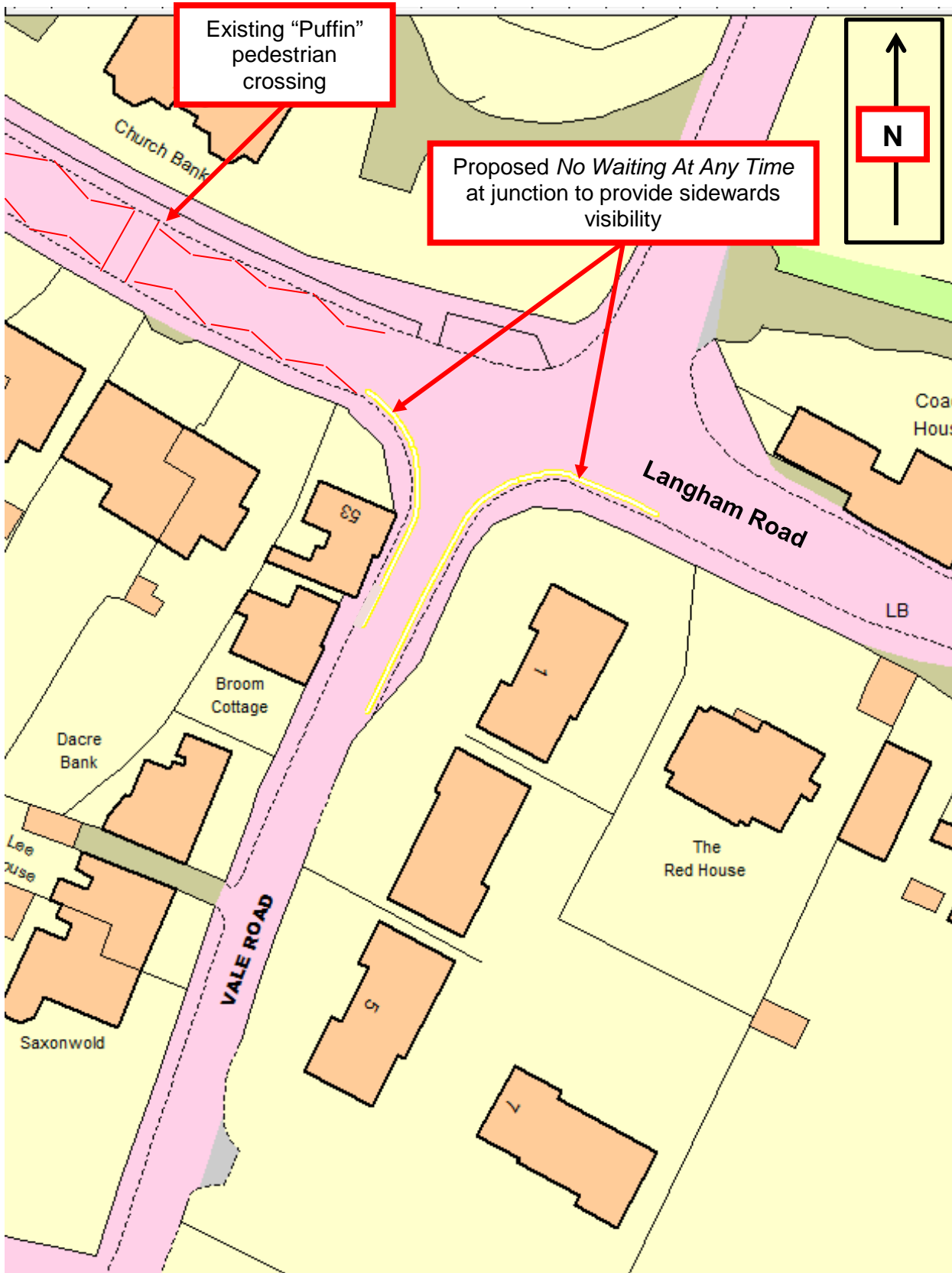
Contracts Director and Acting Head of Highways,
Trafford Council,
Waterside House,
Sale,
M33 7ZF



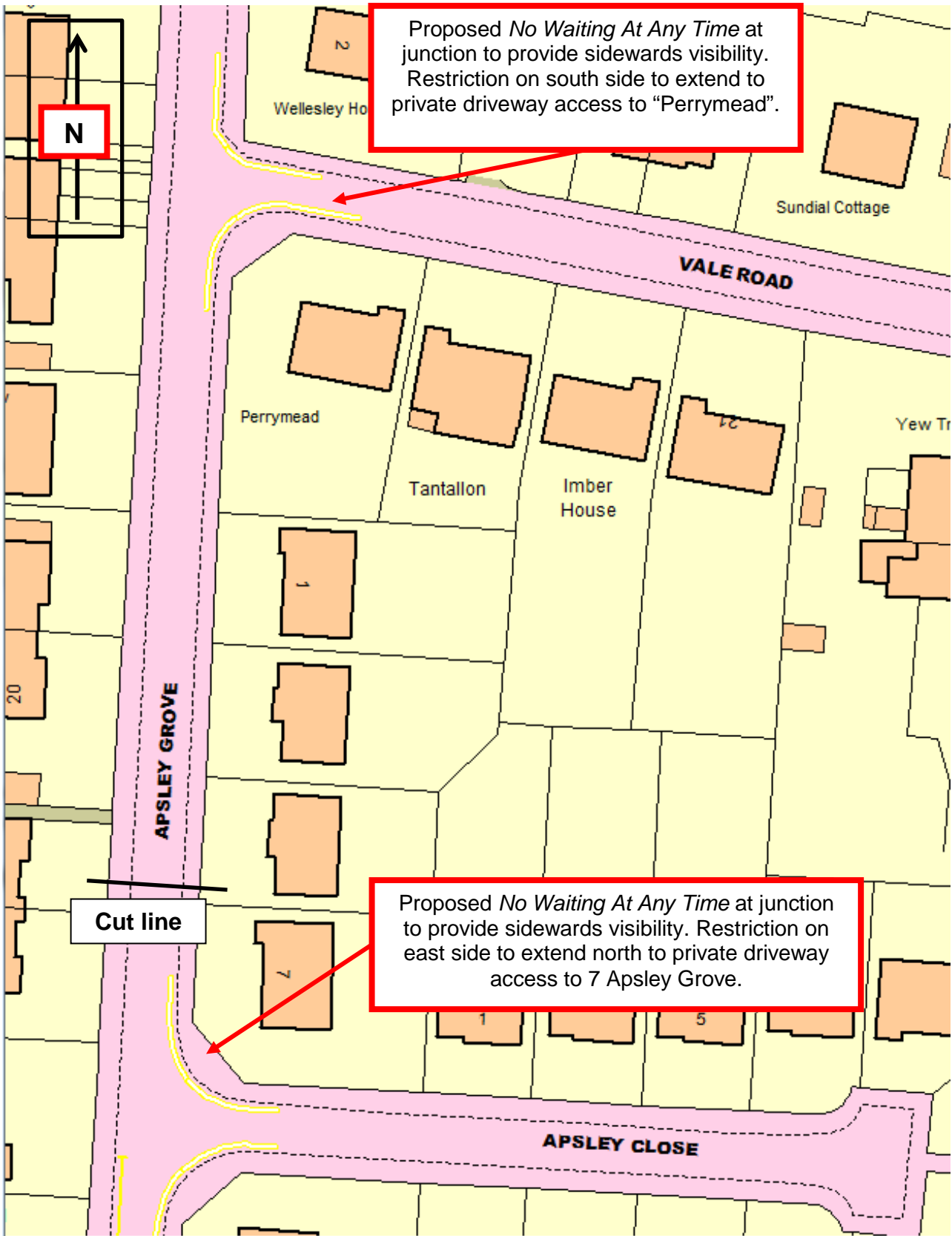
Drawing E8913 (2 of 6)
Existing restrictions in red



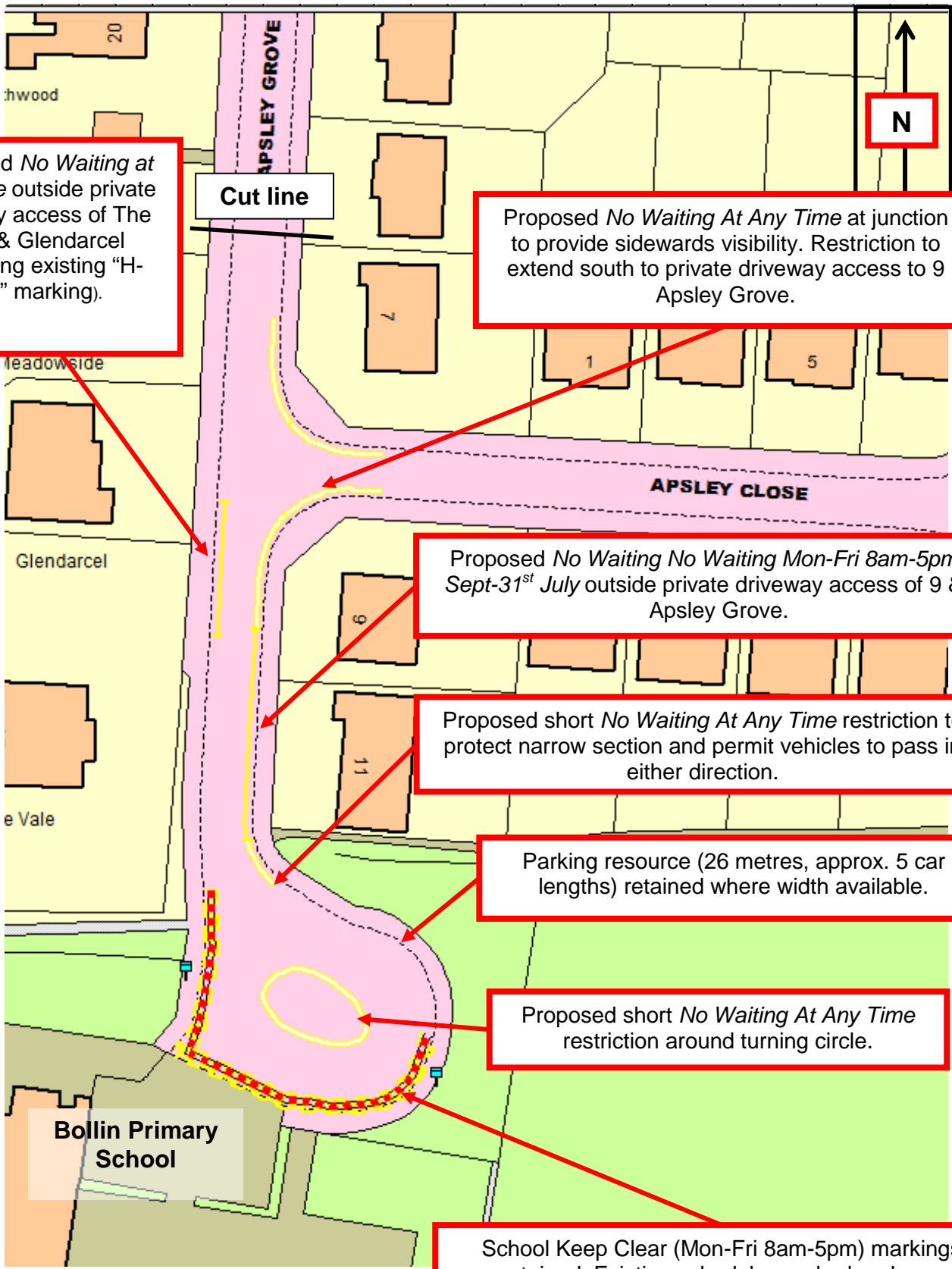
Drawing E8913 (3 of 6)
Existing restrictions in red



Drawing E8913 (4 of 6)



Drawing E8913 (5 of 6)



Proposed *No Waiting at any Time* outside private driveway access of The Vale & Glendarcel (replacing existing "H-bar" marking).

Proposed *No Waiting At Any Time* at junction to provide sideways visibility. Restriction to extend south to private driveway access to 9 Apsley Grove.

Proposed *No Waiting No Waiting Mon-Fri 8am-5pm 1st Sept-31st July* outside private driveway access of 9 & 11 Apsley Grove.

Proposed short *No Waiting At Any Time* restriction to protect narrow section and permit vehicles to pass in either direction.

Parking resource (26 metres, approx. 5 car lengths) retained where width available.

Proposed short *No Waiting At Any Time* restriction around turning circle.

School Keep Clear (Mon-Fri 8am-5pm) markings retained. Existing schedule revoked and new produced to accurately describe restriction.

Drawing E8913 (6 of 6)