

## BOROUGH OF TRAFFORD (PROHIBITION OF WAITING AND LOADING AND PROVISION OF PARKING) ORDER 2001 (AMENDMENT NO 164) ORDER 2014

**NOTICE IS HEREBY GIVEN** that Trafford Borough Council proposes to make an Order under the Road Traffic Regulation Act 1984.

The effect of the Order will be to amend the Borough of Trafford (Prohibition of Waiting and Loading and Provision of Parking) Order 2001 ("the 2001 Order") by the introduction or removal of the following provisions:

a) No Waiting at Any Time	Code - 7A
b) No Waiting at Any Time No Loading At Any Time	Code - 7A7A
c) No Waiting Mon –Sat 8am – 6pm	Code - 6C
d) No Waiting Mon – Fri 8am – 5pm	Code - 5S
e) Waiting Limited to 10 mins No Return Within 1 Hour At Any Time	Code - LU7A
f) School Keep Clear Mon-Fri 8am -5pm	Code - SS
g) No Stopping At Any Time Except Taxis (stand for 7 Taxis)	Code - 7ST7A

on the lengths of roads specified in Schedules 1 and 2 hereto, by the addition, to the Schedule to the 2001 Order, of the lengths of road specified in Schedule 1 below and by the removal, from the Schedule to the 2001 Order, of the lengths of road specified in Schedule 2 below.

### Schedule 1a – Proposed

Street	Side	From	To	Code
West Road, Bowdon	north	a point 33 metres east of its junction with South Road	a point 65 metres east of its junction with South Road	SS

### Schedule 1b - Proposed

Street	Side	From	To	Code
Woodville Road, Altrincham	south west	a point 93 metres east of its junction with St Margarets Road	its junction with Bowdon Road	7A
Woodville Road, Altrincham	south west	its junction with Bowdon Road	a point 10m south-east of its junction with Bowdon Road	7A
Woodville Road, Altrincham	south west	a point 10 metres south-east of its junction with Bowdon Road	its junction with Higher Downs	6C
Woodville Road, Altrincham	north east	its junction with Bentinck Road	a point 11 metres south-east of its junction with Bentinck Road	7A
Woodville Road, Altrincham	north east	a point 22 metres south-east of its junction with Bentinck Road	a point 49 metres south-east of its junction with Bentinck Close	7A
Woodville Road, Altrincham	north east	a point 55 metres south-east of its junction with Bentinck Road	a point 66 metres south-east of its junction with Bentinck Road	7A
Woodville Road, Altrincham	north east	a point 78 metres south-east of its junction with Bentinck Road	a point 105 metres south-east of its junction with Bentinck Road	7A
Woodville Road, Altrincham	north east	a point 110 metres south-east of its junction with Bentinck Road	a point 105 metres northwest of its junction with The Downs	7A

### Schedule 1c - Proposed

Street	Side	From	To	Code
Langham Road, Bowdon	south west	a point 7m north-west of its junction with Vale Road	its junction with Vale Road	7A
Vale Road, Bowdon	north west	its junction with Langham Road	a point 20 metres south-west of its junction with Langham Road	7A
Vale Road, Bowdon	south east	its junction with Langham Road	a point 30 metres south-west of its junction with Langham Road	7A
Langham Road, Bowdon	south west	its junction with Vale Road	a point 15 metres south-east of its junction with Vale Road	7A
Apsley Grove, Bowdon	east	a point 10 metres north of its junction with Vale Road	its junction with Vale Road	7A
Vale Road, Bowdon	north	its junction with Apsley Grove	a point 10 metres east of its junction with Apsley Grove	7A
Apsley Grove, Bowdon	east	its junction with Vale Road	a point 10 metres south of its junction with Vale Road	7A
Vale Road, Bowdon	south	its junction with Apsley Grove	a point 13 metres east of its junction with Apsley Grove	7A
Apsley Grove, Bowdon	east	a point 11 metres north of its	its junction with Apsley Close	7A

Bowdon		junction with Apsley Close		
Apsley Close, Bowdon	north	its junction with Apsley Grove	a point 10 metres east of its junction with Apsley Grove	7A
Apsley Grove, Bowdon	east	its junction with Apsley Close	a point 12 metres south of its junction with Apsley Close	7A
Apsley Close, Bowdon	south	its junction with Apsley Grove	a point 10 metres east of its junction with Apsley Grove	7A
Apsley Grove, Bowdon	east	a point 12 metres south of its junction with Apsley Close	a point 34 metres south of its junction with Apsley Close	5S
Apsley Grove, Bowdon	east	a point 34 metres south of its junction with Apsley Close	a point 39 metres south of its junction with Apsley Close	7A
Apsley Grove, Bowdon	outer side	a point 15 metres north of the south-westerly corner of its southerly cul-de-sac end	a point 65 metres south of its junction with Apsley Close	SS
Apsley Grove, Bowdon	west	a point 127 metres south of its north-westerly corner of its northerly cul-de-sac end	a point 141 metres south of its north-westerly corner of its northerly cul-de-sac end	7A
Apsley Grove, the turning circle at its southern end		its entire circumference		7A

#### Schedule 1d - Proposed

Street	Side	From	To	Code
Rifle Road, Sale	north west	its junction with Old Hall Road	a point 70 metres northeast of its junction with Old Hall Road	7A7A
Rifle Road, Sale	north west	a point 88 metres northeast of its junction with Old Hall Road	a point 50m northeast of its junction with Sale Water Park	7A7A
Rifle Road, Sale	south east	its junction with Old Hall Road	a point 99 metres north-east of its junction with Old Hall Road	7A7A
Rifle Road, Sale	south east	a point 133 metres north-east of its junction with Old Hall Road	a point 50 metres north-east of its junction with Sale Water Park	7A7A
Rifle Road, Sale	north west	a point 70 metres northeast of its junction with Old Hall Road	a point 88 metres northeast of its junction with Old Hall Road	LU7A
Rifle Road, Sale	south east	a point 99 metres north-east of its junction with Old Hall Road	a point 133 metres north-east of its junction with Old Hall Road	LU7A
Un-named access road to Sale Water Park, Sale	both	a point 25 metres north of its junction with Park & Ride access	its junction with Rifle Road	7A7A

#### Schedule 1e - Proposed

Street	Side	From	To	Code
Barton Dock Road, Trafford Park	north east	a point 110 metres northwest of its junction with Traders Avenue	a point 67 metres northwest of its junction with Traders Avenue	7ST7A

#### Schedule 2a - To be revoked

Street	Side	From	To	Code
Woodville Road, Altrincham	south west	a point 93 metres east of its junction with St Margarets Road	its junction with Bowdon Road	6C
Woodville Road, Altrincham	south	its junction with Bowdon Road	its junction with Higher Downs	6C
Woodville Road, Altrincham	north east	a point 187 metres northwest of its junction with The Downs	to a point 105 metres northwest of its junction with The Downs	6C

#### Schedule 2b - To be revoked

Street	Side	From	To	Code
Apsley Grove, Bowdon	outer	a point on the westerly side 18 metres north of the south-westerly corner of the cul-de-sac end, around the cul-de-sac end	a point on the easterly side 72 metres south of its southerly junction with Apsley Close	SS

#### Schedule 2c - To be revoked

Street	Side	From	To	Code
--------	------	------	----	------

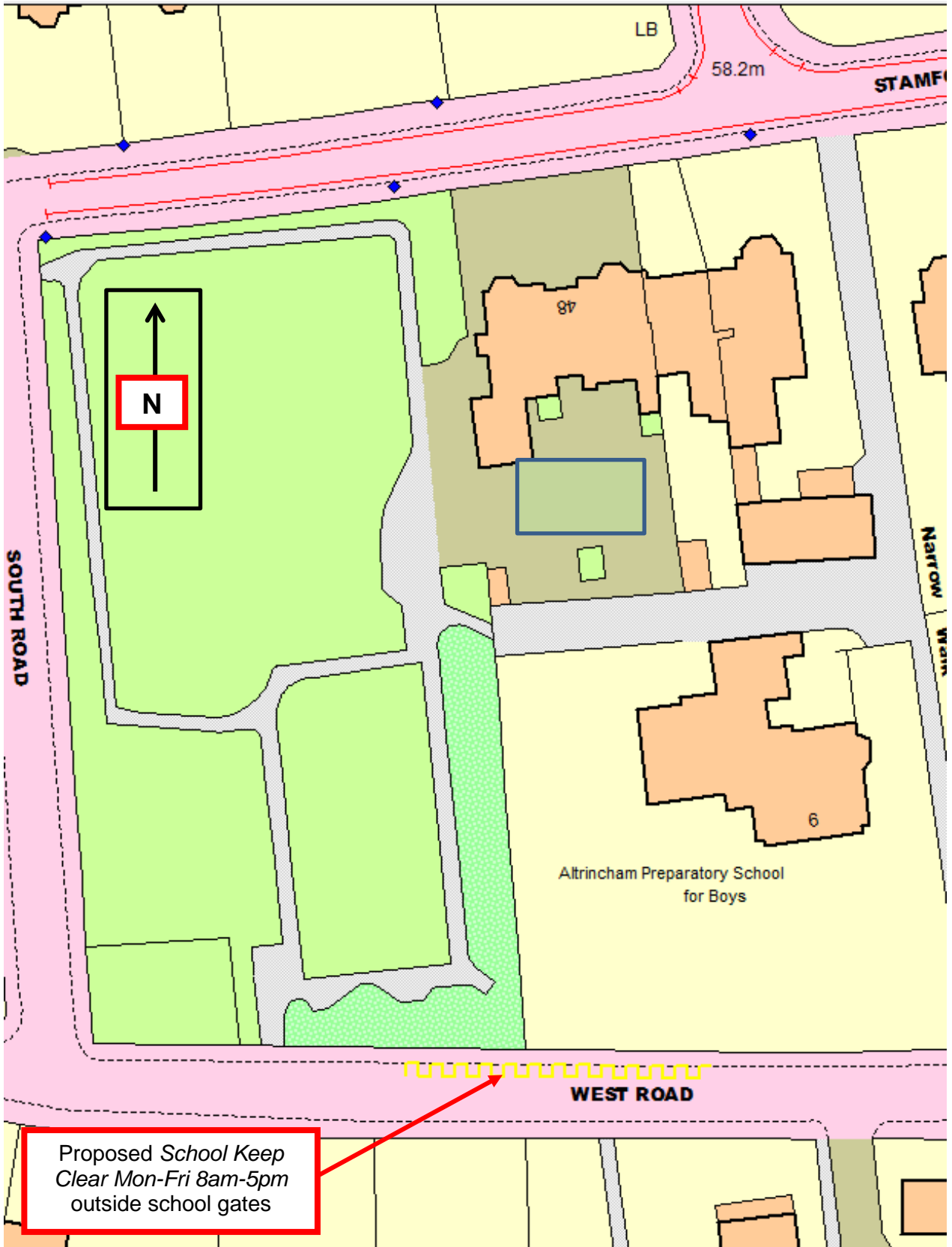
Barton Dock Road, Trafford Park	north east	a point 156 metres northwest of its junction with Traders Avenue	a point 116 metres northwest of its junction with Traders Avenue	7ST7A
---------------------------------	------------	--	--	-------

A copy of the Draft Order, together with statements of reasons may be inspected at Altrincham Access Trafford, Stamford New Road, Altrincham, Stretford Library Information Desk and at Access Trafford, Sale Waterside, Sale during their normal opening hours. **The Notice and plans can also be viewed on-line at: <https://legacy.trafford.gov.uk/content/trafficorders>**

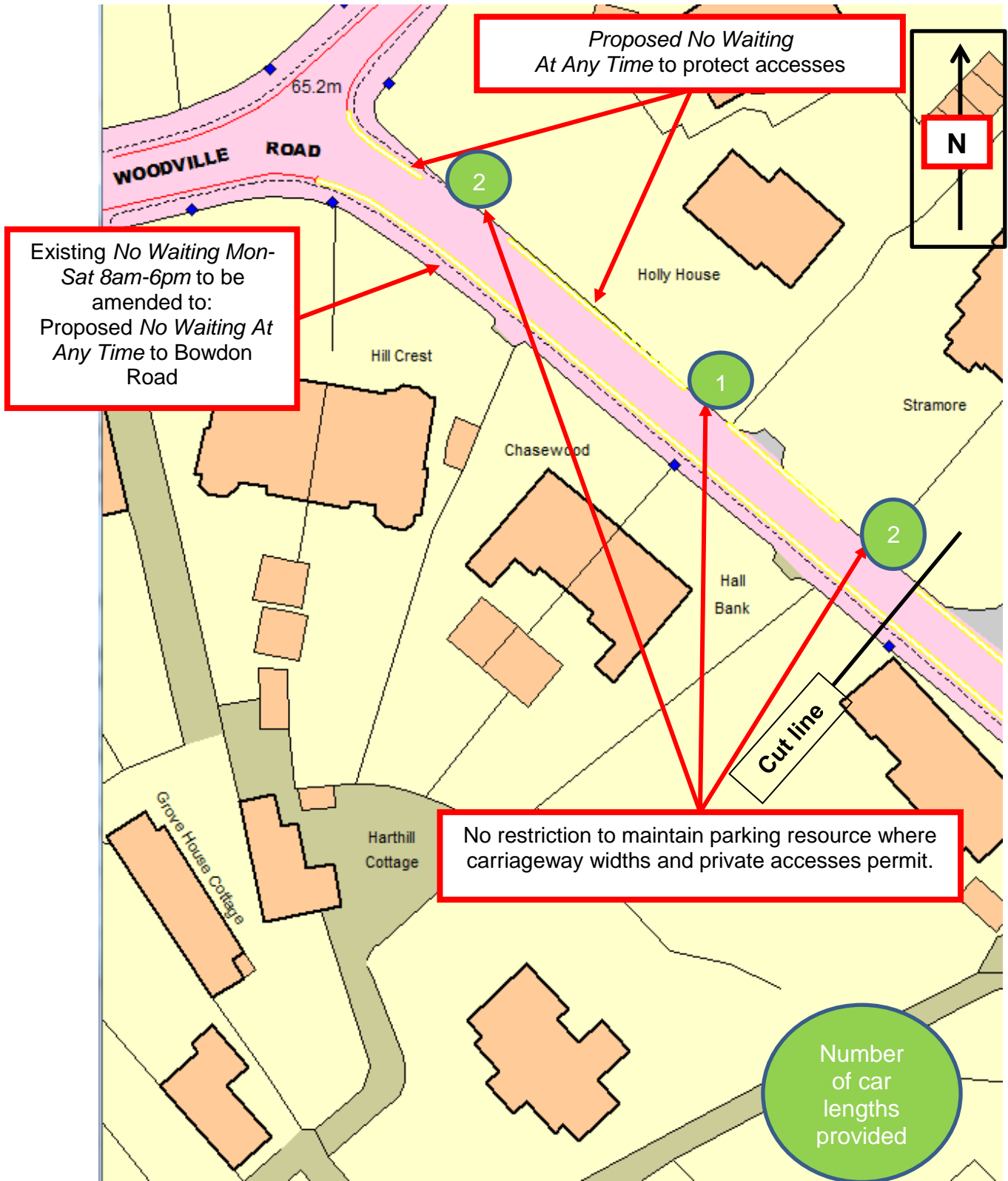
Any objections to the proposals, together with the grounds on which they are made, should be sent, in writing, to the address below or by e-mail to [traffic@trafford.gov.uk](mailto:traffic@trafford.gov.uk) by 1<sup>st</sup> October 2014.

Dated: 10<sup>th</sup> September 2014

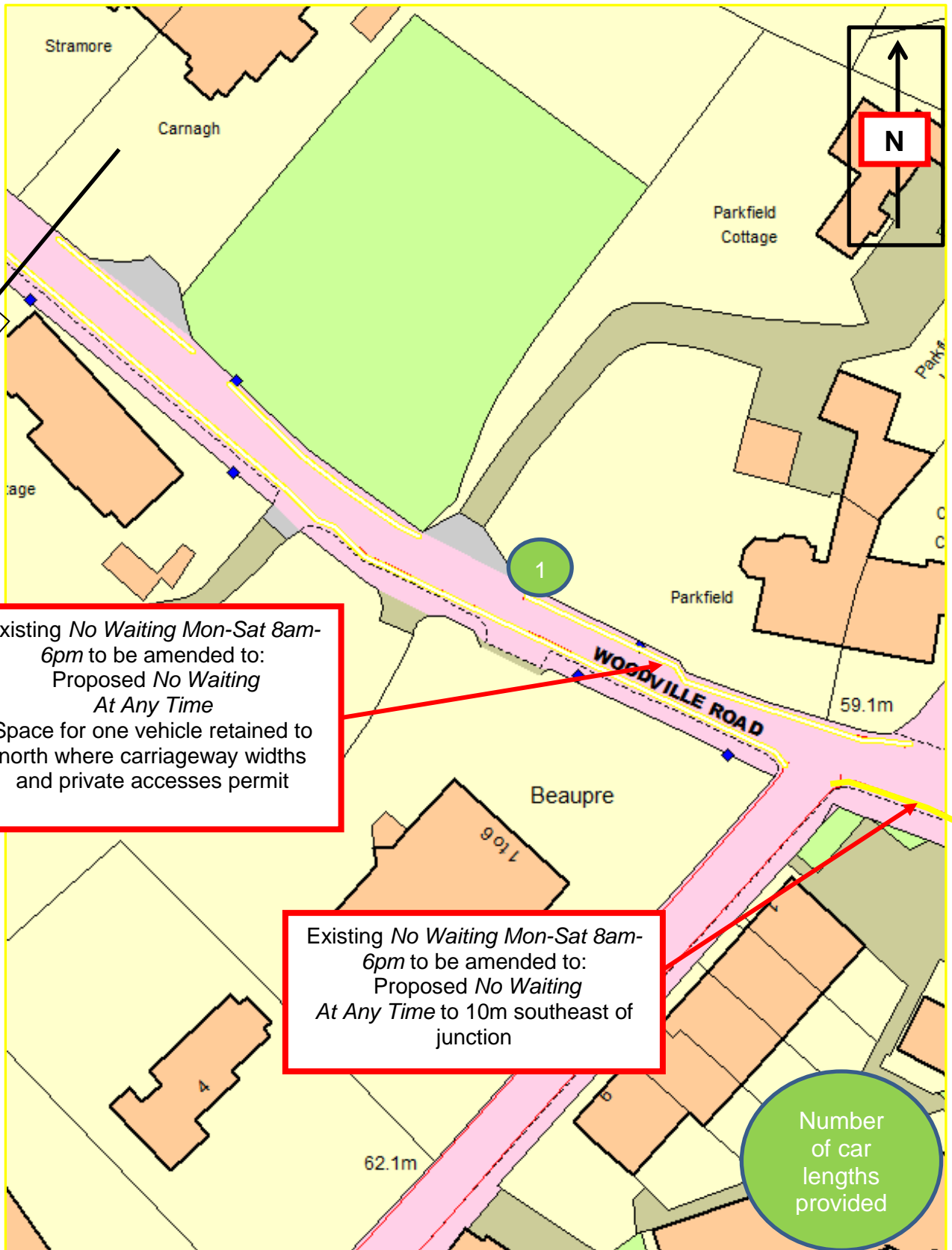
Head of Highways,  
Trafford Council,  
Waterside House,  
Sale,  
M33 7ZF



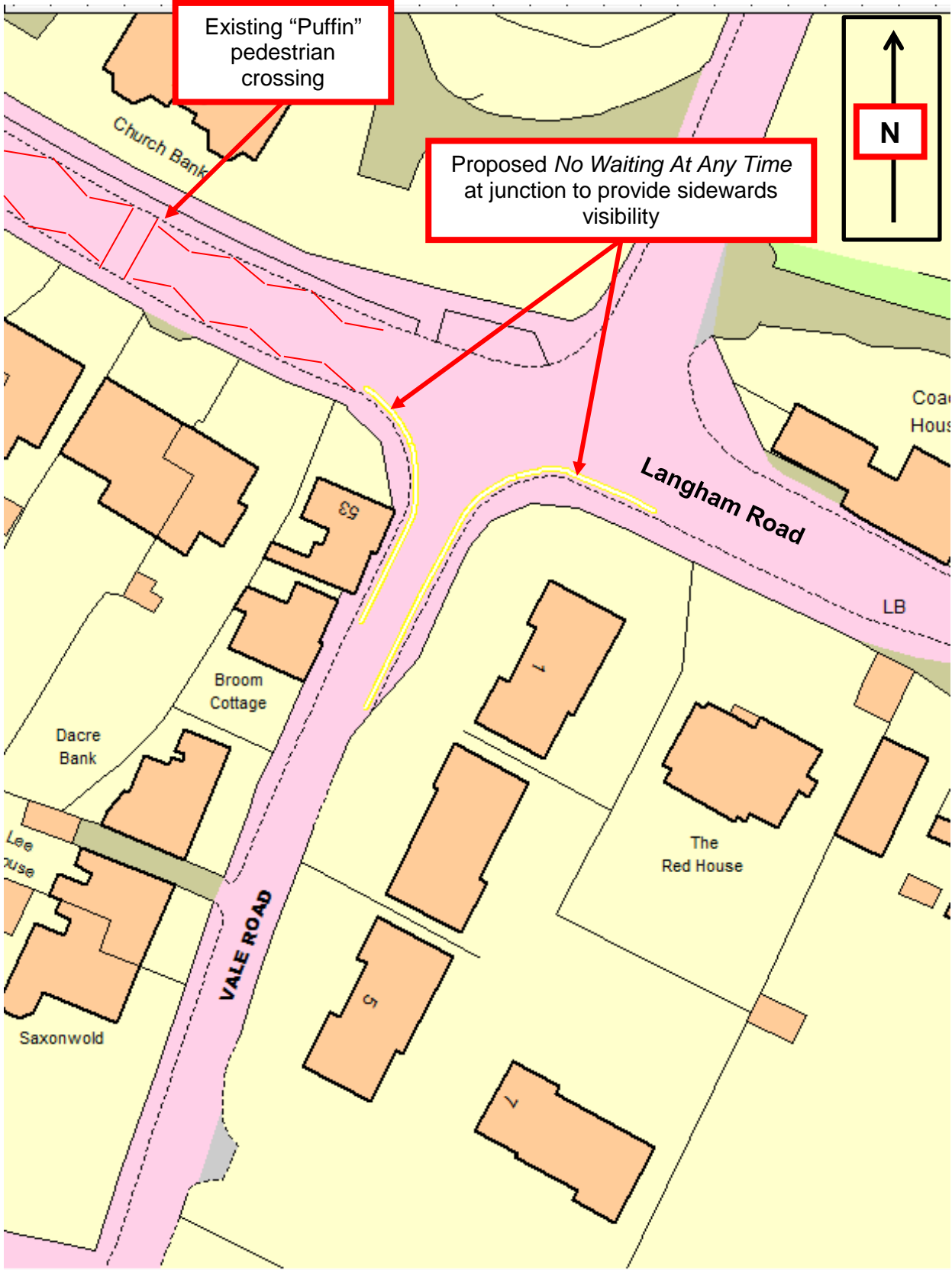
Drawing E8913 (1 of 6)  
Existing restrictions in red



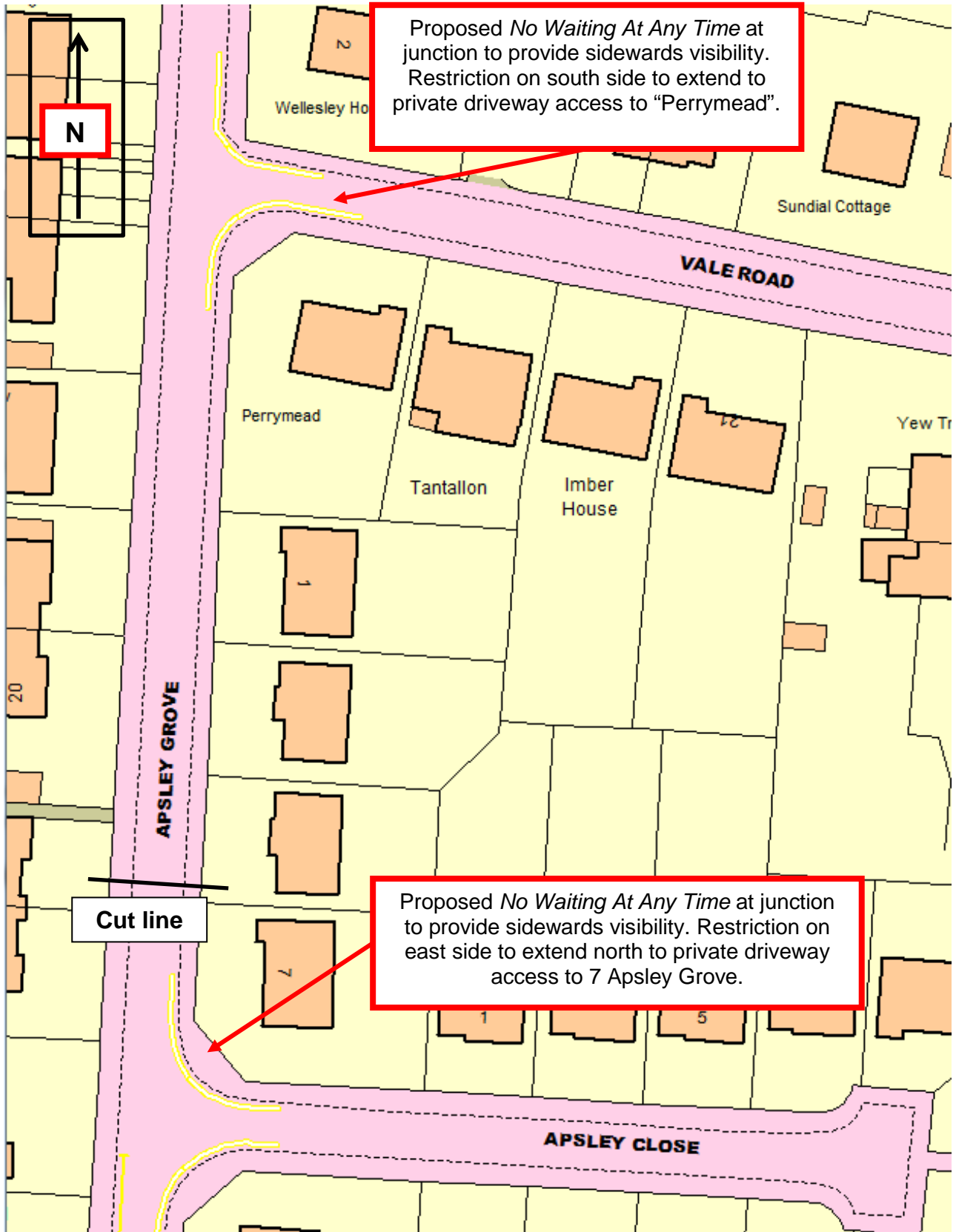
Drawing E8913 (2 of 6)  
Existing restrictions in red



Drawing E8913 (3 of 6)  
Existing restrictions in red



Drawing E8913 (4 of 6)



Drawing E8913 (5 of 6)





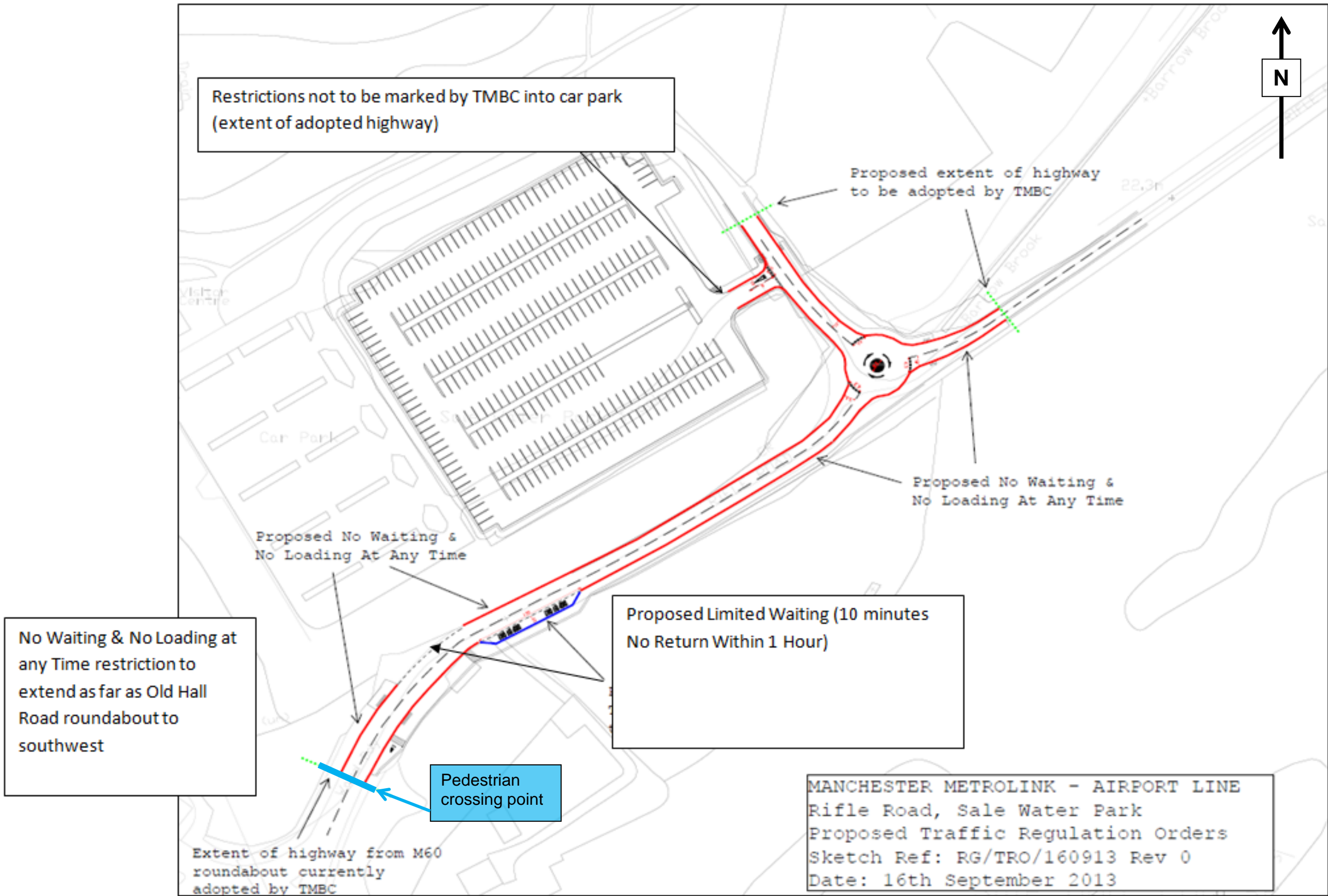


Figure 2 - Drawing E8908 – Proposed parking & waiting restrictions

