

1.0 – Background

Conservation areas are designated by local planning authorities to manage and protect the special architectural and historic interest of certain areas. Trafford Council has designated 21 conservation areas in the Borough, which are areas considered to be of “special architectural or historic interest”. According to the Planning (Listed Buildings and Conservation Areas) Act 1990, a conservation area is defined as an “area of special architectural or historic interest, the character and appearance of which it is desirable to preserve or enhance” A full list of conservation areas in Trafford is available in Appendix 1.

Each conservation area has its own Conservation Area Appraisal and Management Plan (SPD5), all of which were published between 2014 and 2017. Each Management Plan contains a policy for street lighting to be applied in each area. These are available on the Council’s website: <https://www.trafford.gov.uk/planning/strategic-planning/Supplementary-Guidance/supplementary-planning-documents.aspx>.

In summary the policies require:

- Discordant lighting columns and different levels of lighting will be replaced using reduced light levels “warm white” LED lighting. When necessary to replace lighting columns, they should be of the appropriate height to meet recommended safety levels for the type of street but where possible be in a style sympathetic to the historic character of the area. Where resources allow, historic iron lampposts that require replacement may be replaced with Victorian repro ‘post top’ luminaires. These replacements will be assessed on a case-by-case basis. Street furniture appropriate to its setting should be used; in traditional or bespoke designs and materials.
- There are additional requirements in the following conservation areas:
 - Barton upon Irwell – Street and pavement lighting throughout the Conservation Area should be reviewed, both for security reasons and in order to maintain a coherent and stylistically-appropriate scheme throughout the whole of the Conservation Area.
 - Stamford New Road – Priorities for lighting improvements include Railway Street, Stamford New Road and Back Grafton Street. Proposals by Trafford Council to improve the Stamford New Road/Moss Lane/Cross Street and Railway Street/The Downs/Lloyd Street/Ashley Road junctions within the Conservation Area should be implemented.
 - Flixton – Historic lighting at no. 28 The Village and Larkrise should be retained if possible.
 - Warburton, Dunham Town & Dunham Woodhouses – Ornamental columns also remain adjoining the conservation areas particularly on the approach to Dunham Massey.

Trafford Council, as the Highway Authority for the adopted highway in Trafford, does not have a statutory duty to provide street lighting. However, the Council does have a statutory duty to ensure safe passage on the adopted highway. Therefore, empowered by the Highways Act (1980), we do so to enhance safety in the community for residents, pedestrians and road users. This includes areas of Trafford that are designated as conservation areas. Furthermore, as part of our risk-based approach to management of our assets, all streetlights across Trafford are tested for electrical and structural integrity on a cyclical basis. This testing regime will result in a number of street lights every year which require replacement every year.

Within Trafford, over a number of years several differing types of standardised lighting column have been installed for various streetlighting schemes, and some are still in use and maintained at the time of publication of this document. These include, but may not be limited to:

- Cast iron columns (with a ‘swan neck’ lantern arm)
- Concrete columns
- Painted steel columns
- Painted ‘ornamental’ columns (mainly in conservation areas and town centres)

Several types of lantern (or light) have also been used in partnership with the above. The most common form of lanterns were: Low-pressure sodium or SOX (which give off an orange light) or High-pressure sodium or SON lanterns (which give off a white light). Some of these are still in use in some areas of Trafford at the time of publication.

2.0 – Current Street Lighting Installation

Advances in technology has led to developments in the type of columns and lanterns the Council now installs when replacing columns and installing new street lighting where required.

The Council now typically installs galvanised steel columns, which vary in height between 5 metres and 12 metres. In residential areas, the typical height for columns is 6 metres. However, the height of an installed column is always appropriate to the cross-section of the highway it is located on. As a result, height does vary by location based on factors such as classification of highway. Standard details of the columns installed by the Council at the time of publication are outlined in Appendix 2.

The Council no longer paints lighting columns. This is because the galvanisation process, which takes place during the production of the columns, provides a protective coating and long-term defence against corrosion, meaning it is not necessary to paint them.

Light Emitting Diode (LED) lanterns are now also used following the commencement of the LED rollout in April 2016. LED lanterns are more energy efficient and environmentally sustainable than the older types of lanterns outlined in section 1.0. Whilst this LED rollout has been substantially completed, as aforementioned there are still a number of SOX and SON lanterns in use in some areas of the Borough (including in some conservation areas). As a result, the Council is continuing to evaluate the possibilities for further rollouts of LED installations on those street lighting columns that were not included within the original rollout programme.

3.0 – Street Lighting in Conservation Areas Plan

The Council recognises the importance of ensuring that street lighting installations should relate to local surroundings where possible. However, it is of paramount importance to ensure that new or replacement street lighting is appropriately designed, and the suitable type of column and lantern is installed to ensure safety on the highway for residents, pedestrians and road users. This is particularly the case in residential areas, and on classified roads.

In designing street lighting schemes or replacing existing columns, the access and maintenance of equipment must also be given consideration, to minimise the possibility of onerous provisions, which may cause unreasonable disruption in sensitive areas.

As a result, the Council is standardising the approach to street lighting within conservation areas. In residential areas, and on classified roads, the type of columns installed, when replacing columns or installing new street lighting designs will be as outlined in Section 2.0:

- Varying in height between 5 metres and 12 metres. The height of the column will depend on several factors, including the classification of the highway. However, 5 or 6 metre columns will be typical in residential areas. See Appendix 2 for standard details.
- Galvanised steel columns, unpainted
- LED lanterns (with warm white light)

However, in line with existing Conservation Area Appraisal and Management Plans, case-by-case consideration will be given to alternative arrangements in lower conurbation and pedestrianised areas, as well as where supplementary columns exist to light areas excluding the highway within conservation areas. Factors to be considered include, but are not limited to:

- Safety on the highway for residents, pedestrians and road users
- The character of the area
- The existing street lighting budget
- The availability of materials, and potential impacts on access and equipment maintenance
- Capacity within the street lighting team

Street lighting designs (which ultimately determine the placement and spacing of columns for any major upgrades or re-installations), will also consider, where possible, the proximity to listed buildings and heritage assets in conservation areas. Where it is considered possible and appropriate, the street lighting designs will try to minimise the movement of position for replacement street lighting columns, and install replacements that are of the same height as the column(s) which are being replaced.

Newly installed 5 and 6 metre columns can be enhanced with a black Victorian-style lantern and ‘embellishment kit’, giving the columns an ornamental aesthetic, which would be potentially more appropriate to their surroundings. This includes in areas where columns of an ornamental nature are currently in situ. Standard details of the preferred lantern and embellishment kit are available in Appendix 3. Where it is considered appropriate for an embellishment kit to be installed on a column, the column will be purchased in black.

Should any disagreement arise over the installation of new or replacement columns within a conservation area, this will be resolved by discussion between the Council’s Highways Client and Operations Manager (Highways, Transport and Environment Team), the Council’s Heritage & Urban Design Manager (Planning Team) and the One Trafford Partnership’s Streetlighting Operations Manager.

4.0 – Summary

As outlined in this policy, there are currently a number of differing types of street lighting column and lanterns in use throughout the Trafford. However, a standardised approach is now in place for the installation of new and replacement columns, which comprises of unpainted, galvanised steel columns being installed with LED lanterns. Following the introduction of this policy, this will also be the case in conservation areas throughout the Borough. However, case-by-case consideration will be given to the use of embellishment kits on columns in conservation areas where safe and appropriate.

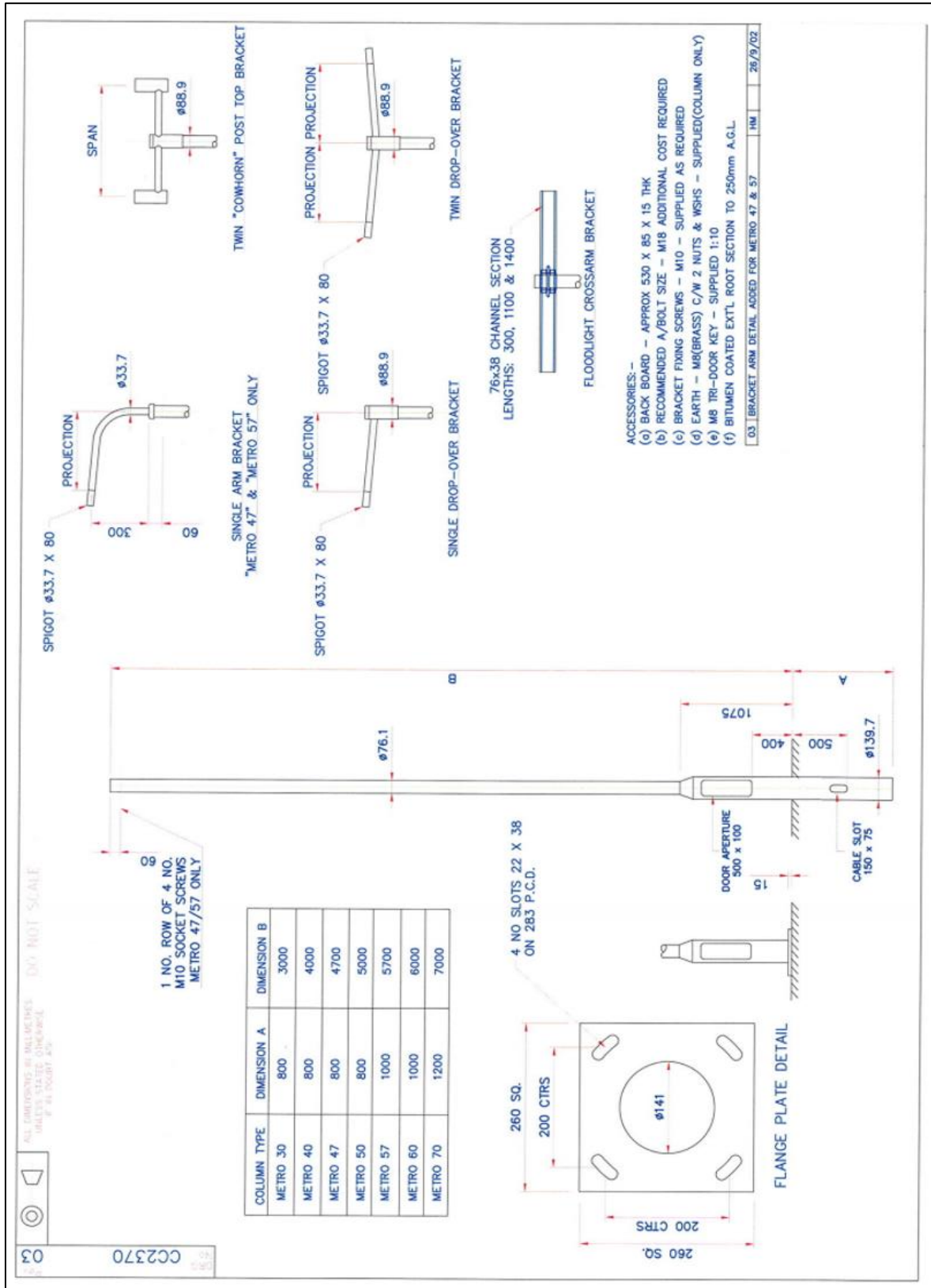
Appendix 1 – Trafford’s Conservation Areas

(Note: this appendix was correct at time of publication, May 2025)

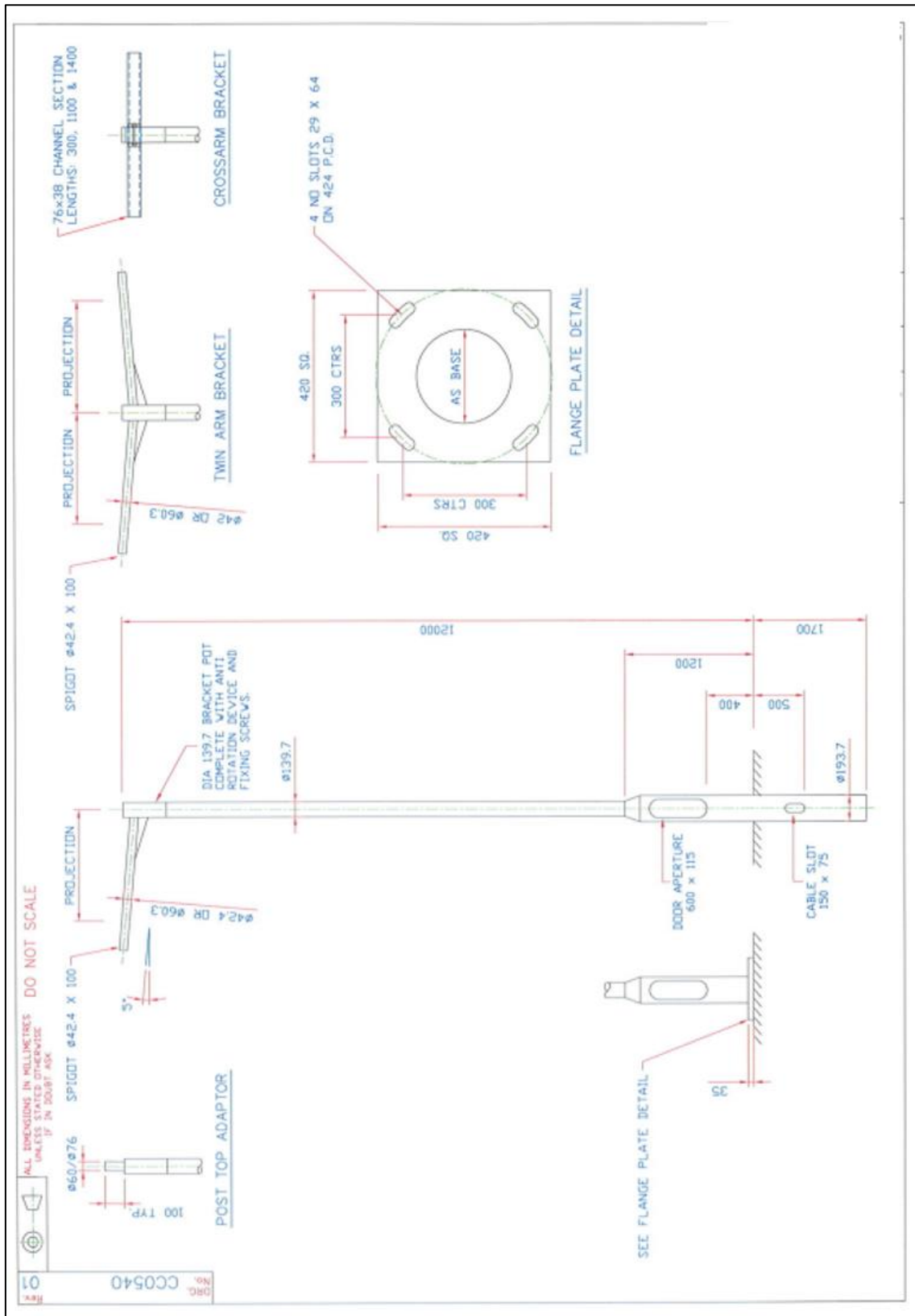
Conservation Area Name
Ashley Heath Conservation Area
Ashton upon Mersey Conservation Area
Barton upon Irwell Conservation Area
Bowdon Conservation Area
Brogden Grove Conservation Area
Devisdale Conservation Area
Dunham Town Conservation Area
Dunham Woodhouses Conservation Area
Empress Conservation Area
Flixton Conservation Area
George Street Conservation Area
Goose Green Conservation Area
Hale Station Conservation Area
Linotype Estate Conservation Area
Longford Conservation Area
Old Market Place Conservation Area
Sandiway Conservation Area
South Hale Conservation Area
Stamford New Road Conservation Area
The Downs Conservation Area
Warburton Village Conservation Area

Appendix 2 – Standard Street Lighting Details

5 Metre and 6 Metre Columns



12 Metre Column



Appendix 3 – Heritage Lantern and Embellishment Kit Details

Versions



BDP768 BDP651 without spigot RET BSP768 & BSP651 40led

Dimensional drawing



Embellishment Kits



Constable Gainsborough