

## New Carrington | Meeting Summary Note – Local Community Groups and Representatives

March 2024 – issued July 2024

# Content

---

1. Introduction

2. Attendees

3. Meeting 3: Local Community Groups and Representatives

4. Appendix

# Introduction

A series of meetings were held in March 2024 with various stakeholders on the New Carrington Masterplan.

## Overview

Trafford Council, Deloitte and WSP facilitated a series of meetings in March 2024 to enable early engagement with key stakeholders regarding the New Carrington Masterplan.

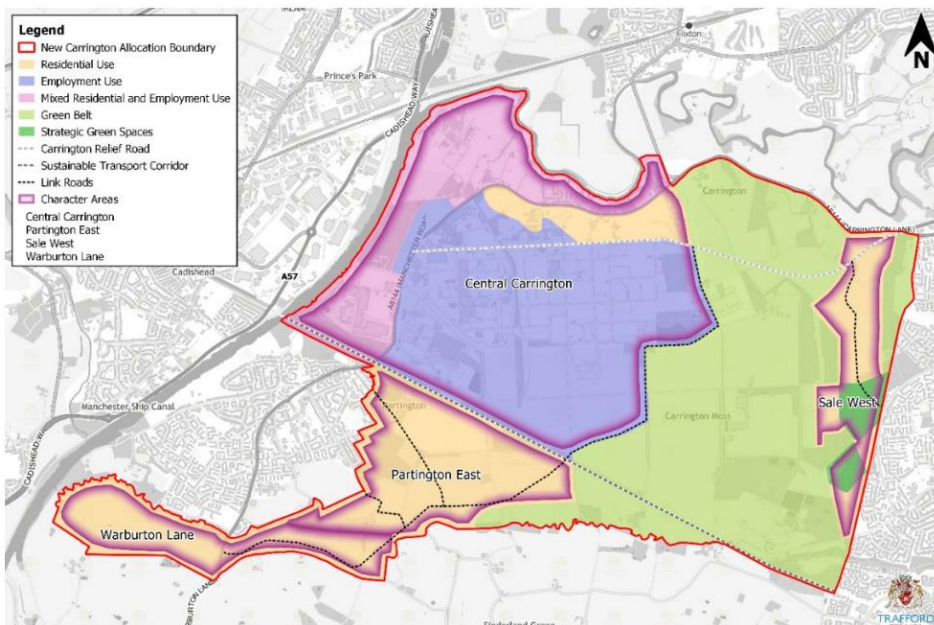
The meetings were carried out in line with Trafford Council’s Statement of Community Involvement (SCI). A list of stakeholders was compiled with invitations to the meetings circulated by Trafford Council in February 2024.

The focus of the meeting was to reflect on the views and priorities of each stakeholder group in relation to New Carrington, which then will be taken away and considered by the project team. As part of the meeting stakeholders were also informed of the work that will be undertaken by Deloitte and WSP (a.k.a. “the Project Team”) from now until December 2024.

## Meeting Materials

To facilitate discussion at the meeting, a series of slides were presented to stakeholders which can be found in the appendix. Alongside this, various materials were provided including the map below.

*New Carrington Indicative Allocation Plan (Picture 11.46 PfE)*



## Meeting Agenda

The same agenda was followed for each meeting, as seen in the table below

1.	Project Team Introductions	Deloitte & WSP
2.	Overview of Project - Why are we here?	Deloitte
3.	Meeting Objectives - What are we looking to achieve today?	Deloitte
4.	Your Views and Priorities - Discussion	Attendees
5.	Closing Remarks	Deloitte, WSP and Trafford Council

## Summary Note

This document is a summary of discussions at the meeting listed below:

- Meeting 3: Local Community Groups and Representatives (19/03/2024)

This document picks up key themes and does not attribute information to individuals.

# Attendees

Attendees of the events are detailed below

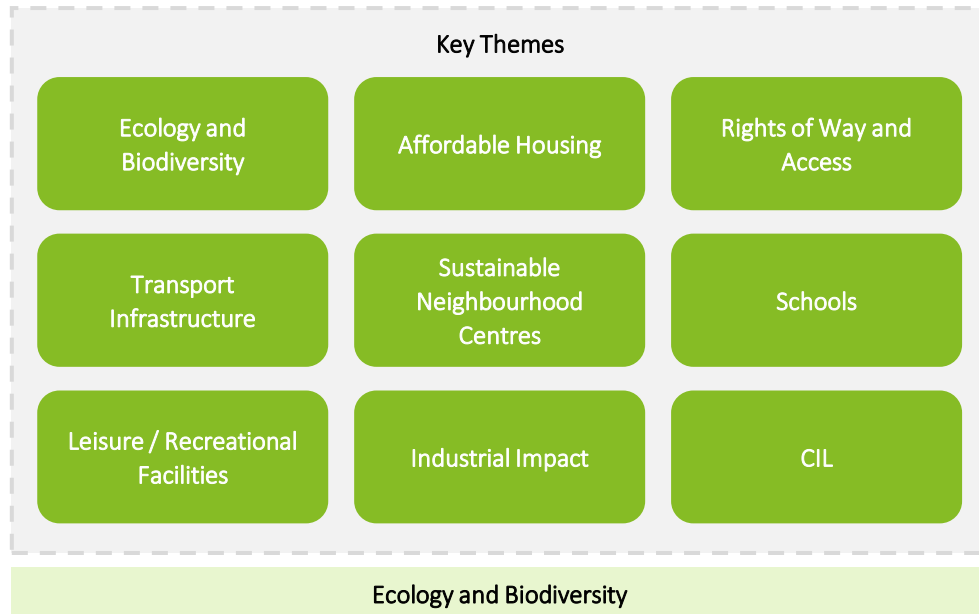
Meeting #1 Landowners and Developers (18/03/2024)	Meeting #2 Councillors and Parish Councillors (18/03/2024)	Meeting #3 Local Community Groups and Representatives (19/03/2024)	Meeting #4 Statutory and Non-Statutory (26/03/2024)
Organisations in attendance:	Organisations in attendance:	Organisations in attendance:	Organisations in attendance:
Redrow	Trafford Council – Executive Member for Economy and Regeneration	Friends of Carrington Moss	Cheshire Wildlife Trust
Stantec (on behalf of Redrow)	Carrington Parish Council	Trafford Wildlife	GMAAS
Stantec (on behalf of Peel)	Warburton Parish Council	Sale Civic Society	GMEU
MUFC	Bucklow St Martins Ward Members	Altrincham & Bowdon Civic Society	Natural England
Paul Butler Associates (on behalf of MUFC)		Positive Partington	National Highways
Burford Carrington		Peak and Northern Footpaths Society	WSP (on behalf of National Highways)
Wain Estates		Partington Parish Council	TfGM
United Utilities			United Utilities
Lichfields (on behalf of United Utilities)			Electricity North West
National Trust			

Please Note: Partington Parish Council attended the Local Community Groups and Representatives event as they were unable to attend the Councillors and Parish Councillors event.

Deloitte Confidential: Government & Public Services – For Approved External Use Only

# Meeting 3: Local Community Groups and Representatives

Tuesday 19<sup>th</sup> March (18:00 – 20:00) @ The Fuse Partington



## Key points:

- Keen to understand how ecology and biodiversity feed into the process – how do wildlife, plants habitats etc feature.
- Impact of development on the Peat Moss, described as an irreplaceable habitat by Natural England. This includes the impact of hydrological changes due to infrastructure drainage / construction. Attendees raised concern that sites of ecological importance will be fundamentally and irreversibly impacted from hydrology / drainage changes.
- Need for protection of SBI and SSSI, within the allocation and the buffer zone.
- Impact of human / domestic pet footfall on sites of importance e.g. the impact on ground nesting birds and endangered species.
- Mitigation will be important, but don't want to see mitigation being carried out elsewhere and want to keep what have already got in the area.
- Compensation needs to be considered for the loss of habitats including but not limited to the peat moss and trees.

## Affordable Housing

### Key points:

- A definition of affordable housing was requested, the council then provided clarity on the policy in relation to affordable housing across the site.

## Rights of Way / Access

### Key points:

- The infrastructure required for residents includes public rights of way and footpaths.
- Public access is crucial for recreational use. There are several attractive routes for different uses e.g. horse-riding, bird watchers, walkers etc. Functional access required to enable people to reach facilities without a car.
- To make active travel attractive to people, there is need for an off-road route that allows people to move between existing areas as opposed to the option of walking / cycling along Carrington relief road.
- Access to Carrington Moss is currently limited for Carrington residents in comparison to Sale / Partington.
- It is essential that new and existing residential areas are connected.
- Potential to add value for both existing and new communities through the infrastructure provided.
- Trans Pennine Trail crosses through the site and there is an opportunity for more strategic active travel routes, with scope for a Trans-Trafford link.

## Transport Infrastructure

### Key points:

- It is important that people use public transport and that bus services are sufficient and reliable.
- Current train services are very busy.
- Community transport is limited, and there is interest from Partington Parish Council to provide free community transport. This is required due to the difficulty of accessing vital services e.g. Wythenshawe Hospital – the closest A&E and where a lot of appointments are based.

# Meeting 3: Local Community Groups and Representatives

Tuesday 19<sup>th</sup> March (18:00 – 20:00) @ The Fuse Partington

## Transport Infrastructure Cont.

*Key points:*

- Impact of car use on air quality.
- Impact of new homes on on-street parking and a need to consider solutions.
- Overarching issue / concern on transport movement across the whole area.
- Current traffic modelling for New Carrington is based on outdated data.
- The potential to reopen the former railway line between Irlam and Timperley (known as the Carrington Greenway) as a heritage line.
- Connection over the canal / to Irlam to provide increased connectivity.
- Ability to be imaginative in thinking of tackling problems e.g. Stockport Interchange.
- Active travel opportunities that will work with the community e.g. cycling buses.
- Opportunity to improve non car travel opportunities through the masterplan development.

## Impact on Partington

*Key points:*

- The overall impact on community services / facilities and the road network (traffic) from doubling the size of the village.
- The positive outcome of development is that it could help attract more shopping / retail development, alongside the improvement of current provision as demand changes.
- Development of a new local centre will provide benefit for existing and new residents.

## Sustainable Neighbourhood Centres

*Key points:*

- Neighbourhood centres need to be sustainable for its current / future demographic e.g. daytime population needed.
- Centres to be built in a way that reduces reliance on car.
- Need to ensure no communities are isolated / separated e.g. Sale West.
- Appropriate community facilities are critical e.g. healthcare, schools, shops etc.

## Schools

*Key points:*

- Need for primary / secondary school provision within the allocation area .
- The movement of children has a significant impact on traffic in the area.
- The optimal location for school places is yet to be defined and the aim is to build in a location that will help alleviate the associated traffic problems.
- Several hundred homes allocated in Carrington, the likelihood of building a school is limited due to the COMAH zone area. Impact of this is potentially a few hundred children travelling by car to school and creating congestion.
- Traffic issues associated with schools won't be resolved unless schools are provided where it is needed in the appropriate locations .
- There is a need to encourage other methods of transport for children to access schools e.g. school buses, walking and cycling.
- Poor connectivity across the area exacerbates the transport problem.
- If children to get to schools in Flixton, could go over new bridge and get tram for example.

## Leisure / Recreational Facilities

*Key points:*

- In both Partington and Carrington there are no leisure / recreational facilities, a car is required to go for a meal and there are no pubs in walking distance.
- Significant horse-riding use across the area with a range of routes across Carrington Moss and an Equestrian school. There is a need to consider the impact of infrastructure on the group and the services they provide to the community.

# Meeting 3: Local Community Groups and Representatives

Tuesday 19<sup>th</sup> March (18:00 – 20:00) @ The Fuse Partington

## Industrial Impact

*Key points:*

- As plans have developed over time there has been a gradual increase in warehouse space, concern regarding the interplay between employment space and housing.
- How to create a space that will be home to both a community and warehousing i.e. there are safety concerns aligned to this.
- Negative visual impact of warehousing on the area.
- What type of industry will be located in New Carrington, and the impact of this on the area e.g. amount of lorry use.
- Transport locality assessment did not reference HGV traffic, there are massive amounts of daily HGV traffic which is set to increase.
- Health and safety concerns associated with the transport of hazardous materials through New Carrington and the speed that HGV's sometimes drive.

## CIL

*Key points:*

- How will various communities benefit from CIL as it is determined by Parish Council areas.

# **Appendix A**

Presentation (March 2024)

---

# WELCOME & INTRODUCTIONS

---

# Agenda |

---

- |    |                                                            |                                       |
|----|------------------------------------------------------------|---------------------------------------|
| 1  | Project Team Introductions                                 | Deloitte & WSP                        |
| 2. | Overview of Project - Why are we here?                     | Deloitte                              |
| 3. | Meeting Objectives - What are we looking to achieve today? | Deloitte                              |
| 4. | Your Views and Priorities - Discussion                     | Attendees                             |
| 5. | Closing Remarks                                            | Deloitte, WSP and<br>Trafford Council |
-

## Meeting Objectives | What is the purpose of today?



New project team



Introducing scope



Early stages of the  
commission



Sharing your views



Knowledge sharing  
opportunity



Understanding the  
baseline position



Key actions to  
implement JP30

## Overview of Project | Purpose and Project Objectives

### PURPOSE

New Carrington represents one of the most substantial and strategically important housing and employment allocations in Greater Manchester. The output of this commission will be a robust and considered delivery and funding mechanism to secure key infrastructure, affordable housing and unlock New Carrington.

1

What infrastructure is needed?

3

When will it be delivered?

2

Where is it to be delivered?

4

Who will deliver it?

## Overview of Project | Scope of Work

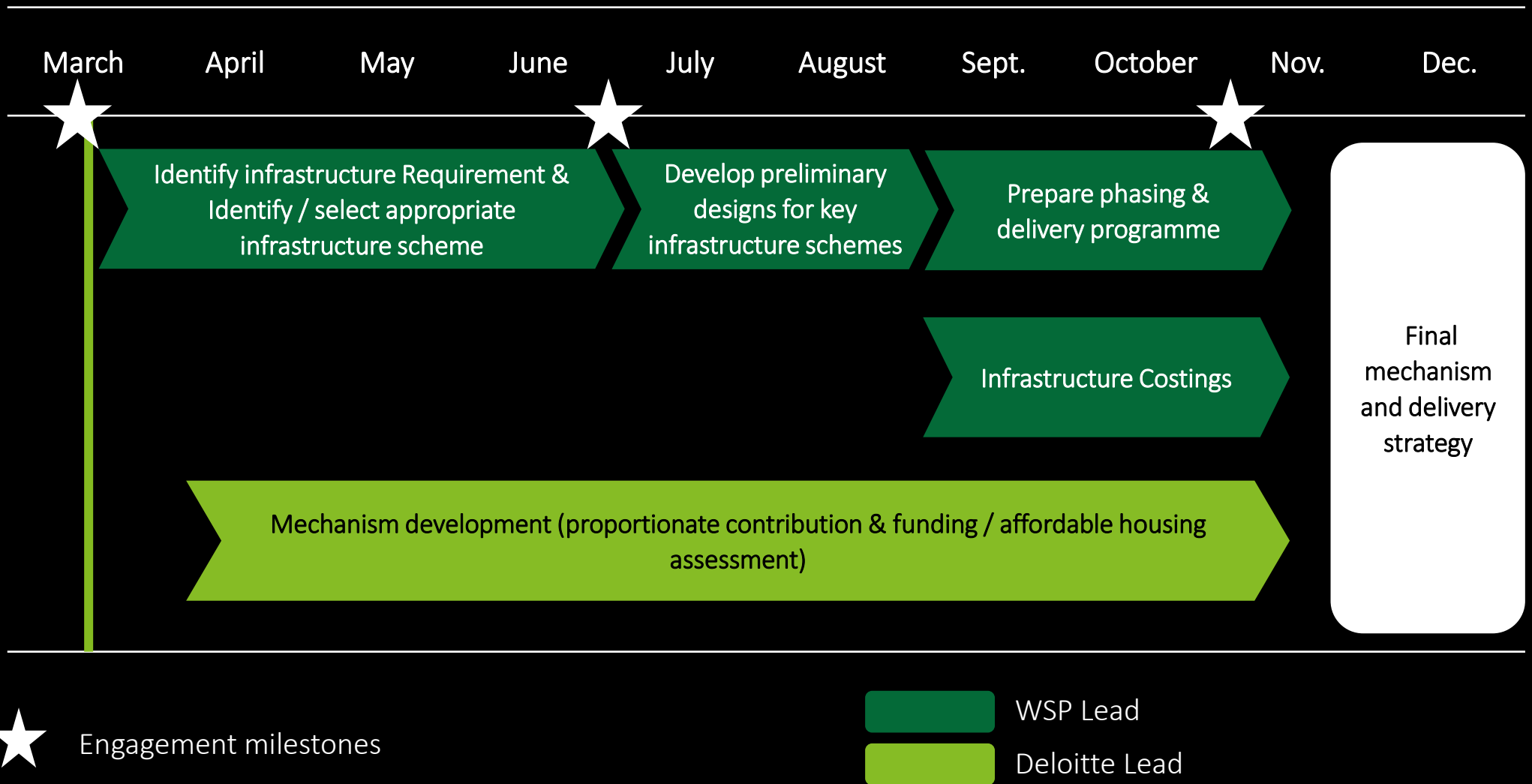
Lot 1 – Infrastructure Framework and Phasing and Delivery Programme

Lot 2 – Infrastructure Costs

Lot 3 – Proportionate Contributions and Funding Mechanism Strategy

Lot 4 – Viability and Affordable Housing Sensitivity Assessment

# Overview of Project | Project Programme



## JUNE 2024 NOTE:

Please note that changes made to the summer consultation dates are not shown on the diagram.

## Your Views and Priorities - Discussion

# — CLOSING REMARKS —



This document is confidential and it is not to be copied or made available to any other party. Deloitte LLP does not accept any liability for use of or reliance on the contents of this document by any person save by the intended recipient(s) to the extent agreed in a Deloitte LLP engagement contract.

If this document contains details of an arrangement that could result in a tax or National Insurance saving, no such conditions of confidentiality apply to the details of that arrangement (for example, for the purpose of discussion with tax authorities).

Deloitte LLP is a limited liability partnership registered in England and Wales with registered number OC303675 and its registered office at 1 New Street Square, London, EC4A 3HQ, United Kingdom.

Deloitte LLP is the United Kingdom affiliate of Deloitte NSE LLP, a member firm of Deloitte Touche Tohmatsu Limited, a UK private company limited by guarantee ("DTTL"). DTTL and each of its member firms are legally separate and independent entities. DTTL and Deloitte NSE LLP do not provide services to clients. Please see [www.deloitte.com/about](http://www.deloitte.com/about) to learn more about our global network of member firms.

© 2024 Deloitte LLP. All rights reserved.