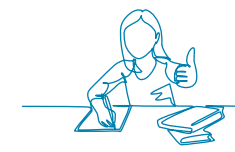


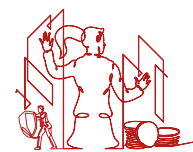
## WHERE THE MONEY GOES



**£65.65 Million**  
Children's and  
Education  
Services



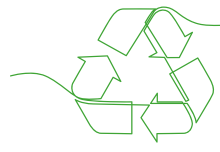
**£7.08 Million**  
Economic Growth,  
Planning and  
Environment



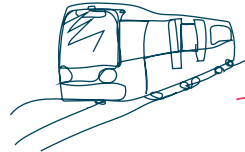
**£25.09 Million**  
Cost of  
Supporting  
Council Services



**£110.27 Million**  
Adults Social  
Services (inc  
Public Health)



**£17.97 Million**  
Collecting and  
Getting Rid of  
Waste



**£25.81 Million**  
Highways, Roads  
and Transport  
Services

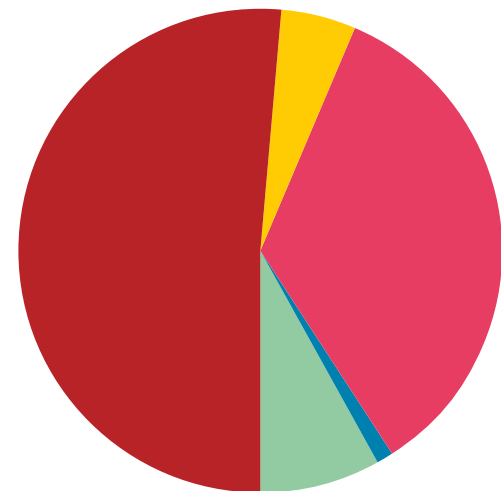


**£16.24 Million**  
Central Costs  
including Capital  
Financing and net  
cost of Housing  
Benefit



**£5.55 Million**  
Recreation and  
Tourism

## TRAFFORD COUNCIL'S FUNDING BY SOURCE 2026/27



**Council Tax Core Precept,**  
£126.71m, 46%

**Reserves & Capitalisation  
Direction,** £17.64m, 6%

**Baseline funding including  
Business Rates,** £104.70m, 38%

**Council Tax Surplus from Prior  
Year,** £0.26m, 1%

**Council Tax Adult Social Care  
Precept,** £24.35m, 9%

## ADULT SOCIAL CARE PRECEPT

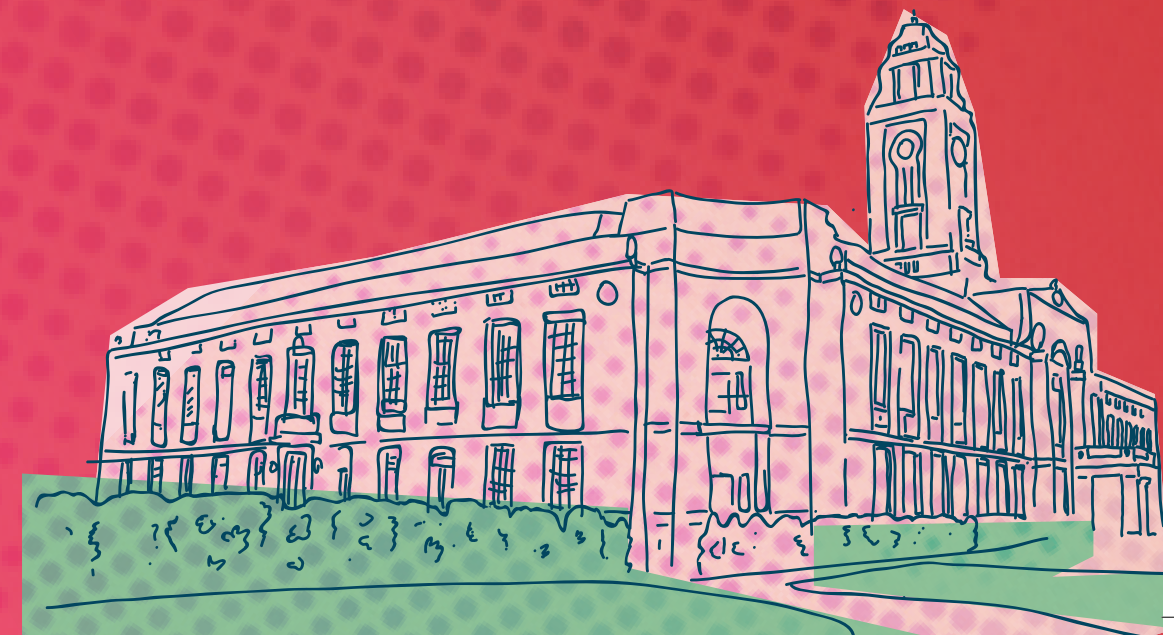
The Secretary of State made an offer to adult social care authorities. ('Adult social care authorities' are local authorities which have functions under Part 1 of the Care Act 2014, namely county councils in England, district councils for an area in England for which there is no county council, London borough councils, the Common Council of the City of London and the Council of the Isles of Scilly.) The offer was the option of an adult social care authority being able to charge an additional 'precept' on its council tax without holding a referendum, to assist the authority in meeting its expenditure on adult social care from the financial year 2016/17.

The Secretary of State renewed the offer allowing authorities to raise a levy for the 2026/27 financial year. A 2% Adult Social Care Precept has therefore been levied for 2026/27.



# TRAFFORD

## YOUR COUNCIL TAX



## WELCOME

Each year, I hope to give good news around our Council finances. The reality is that we are having to make yet more savings while more people are needing our services than ever before.

Last year, our forecast three-year budget deficit stood at £50m. Our hard work reduced that to just £10m until a recent fair funding review by the government increased that deficit by a further £24m.

Unsurprisingly, after having been forced to make £330m in savings in recent years, we are not in a position where we can easily make swingeing cuts. Therefore, we have taken the responsible decision to ask the government for help, known as Exceptional Financial Support (EFS).

Our request was agreed, resulting in a £12.6m loan, providing we increase council tax by 7.49% for 2026/27.

I did not seek election to the Council back in 2008 so that I could set a budget that relies on EFS. I stood because I wanted to give back to the community that helped to raise me and educate me. I stood for this Council because of what it has done for our borough – for being there for people in need of support, for its parks and stewardship, for its commitment to education.

I remain committed to the Council for what we have done in recent times – the regeneration of Altrincham and Stretford; the community hubs we set up to help

residents during Covid; our new leisure facilities such as move Altrincham and the new BMX track at Partington; the school streets that make it easier and safer for parents to walk their children to school.

We continue to serve our residents, businesses and communities. Our capital programme includes the development in Old Trafford – creating new homes and new jobs for thousands of people. It includes the Carrington Relief Road which, when built, will take heavy traffic away from the village. It includes our new Urmston Plan to make sure the town centre best serves our residents and businesses.

Our revenue programme will continue to serve our most vulnerable residents. We will support children with special educational needs and their families with an extra £2m. We know older people want to continue living in their communities; we will provide an extra £4m to help them do this. This is our statutory as well as our moral duty. We are also adding £20m additional capital investment into our roads and infrastructure, schools, support for vulnerable adults, public realm and digital services.

Our aim is to maintain responsible stewardship of our finances so that we can continue to invest in our great borough of Trafford.



**Councillor Tom Ross**  
Leader of Trafford Council

## YEARLY COUNCIL TAX CHARGE FOR TRAFFORD

The amount you must pay depends on which band your home is in. This is shown on your council tax bill. A government body called The Valuation Office Agency decides which band your property is in. Taxpayers in Parish areas will pay extra because of the addition of a local parish precept.

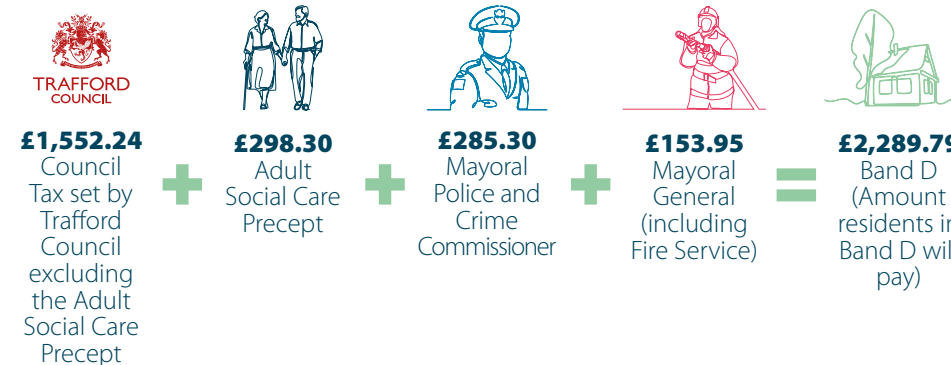
BAND	COUNCIL TAX £ (EXCLUDING PARISHES)	PARTINGTON £	WARBURTON £	CARRINGTON £
A	1,526.51	1,572.04	1,559.84	1,546.51
B	1,780.95	1,834.07	1,819.84	1,804.28
C	2,035.34	2,096.05	2,079.78	2,062.01
<b>D</b>	<b>2,289.79</b>	<b>2,358.09</b>	<b>2,339.79</b>	<b>2,319.79</b>
E	2,798.61	2,882.09	2,859.72	2,835.28
F	3,307.45	3,406.11	3,379.67	3,350.78
G	3,816.29	3,930.12	3,899.62	3,866.29
H	4,579.58	4,716.18	4,679.58	4,639.58

For further information on how bands are set and how you can appeal against your band, contact [www.gov.uk/contact-voa](http://www.gov.uk/contact-voa)

### The charge for council tax is calculated as follows

Most of the money we collect is spent on local council services. However, some of it pays for things that benefit the whole of Greater Manchester, such as police and fire services, and getting rid of waste. All councils in Greater Manchester make a similar contribution. Your bill shows how these costs are made up.

### Example of breakdown for council tax band D:



## EXTRA HELP

If you are struggling with your finances, there are a number of different ways we may be able to support you.

[www.trafforddirectory.co.uk/moneymatters](http://www.trafforddirectory.co.uk/moneymatters) has information on how you can access help with debts, benefits advice and much more.

### Help with Council Tax

If you're struggling to pay your council tax, contact us. We can find a solution together. We could:

- Change your 10-month payment plan to a 12-month payment plan by visiting [www.trafford.gov.uk/directdebit](http://www.trafford.gov.uk/directdebit)
- Check if you're due a discount or exemption [www.trafford.gov.uk/reducemybill](http://www.trafford.gov.uk/reducemybill)
- Check if you're entitled to council tax support [www.trafford.gov.uk/CTSInfo](http://www.trafford.gov.uk/CTSInfo)
- Tell you how you can appeal if you think your council tax bill is wrong, for example you are not the resident or owner. See [www.valuationtribunal.gov.uk](http://www.valuationtribunal.gov.uk) for more information.
- Tell you where you can get independent advice and support on budgeting and debt matters.

### More information

Your guide to the council tax, how it is calculated and spent can be accessed online, visit:

<http://www.trafford.gov.uk/counciltaxinfo>

### View your council tax information online

Did you know you can now view your personal council tax information through a secure password protected account? Your online account allows you to view your council tax bill, dates your payments become due, as well as details of any reductions. To set up your account visit [www.trafford.gov.uk/traffordonline](http://www.trafford.gov.uk/traffordonline)

### Sign up to direct debit

It's the easiest way to pay. The scheme offers you complete peace of mind as it is guaranteed by your bank visit [www.trafford.gov.uk/directdebit](http://www.trafford.gov.uk/directdebit)

### Help with rent

If you get help with your rent from housing benefit or through Universal Credit, you may be eligible for a discretionary housing payment to help you if you are struggling to pay your rent visit [www.trafford.gov.uk/dischp](http://www.trafford.gov.uk/dischp)

### Help with food and fuel

Trafford Assist is our emergency assistance scheme to help residents with food and fuel. You can apply online and get an instant decision visit [www.trafford.gov.uk/traffordassist](http://www.trafford.gov.uk/traffordassist)

