
Outdoor Sports Facilities Study
An Assessment of Need
March 2009



Contents

- 1 Background**
- 2. Introduction**
- 3. Methodology**
- 4. Quality Evaluation of Facilities and Pitches**
- 5. Issues from Quality Assessment**
- 6. Quantity and Quality Audit by Sport Type**
- 7. Conclusions**

Appendix A - List of sites by Site ID

Appendix B - List of pitches by Pitch ID

Appendix C - Sport England pitch quality assessment tool

Appendix D - Example Outdoor Sports Pitch Assessment form showing scores allocated to each rating.

Appendix E- List of data sources

1. Background

This study provides updated information on Trafford's outdoor sports facilities and pitches to the study carried out and published in 2001. The format of the report is different from the 2001 study. This study looks at an audit of public and private facilities and their distribution in the borough. It also includes an assessment of quality of the public facilities as recommended in Planning Policy Guidance Note 17 (PGg17). The PPG 17 guidance was used to carry out an audit of Trafford's Green and Open Spaces in June 2005. This study should be read in conjunction with the 2005 study which provides details on wider issues with green space and views of the community in terms of quality and future needs of the community. Sports Groups were a major contributor to the consultation carried out in the 2005 study. A review of indoor sports facilities is the subject of a separate Leisure Review report.

2. Introduction

The aim of this study is to provide an up to date audit of outdoor sports facilities and pitches, concentrating on publicly accessible sites. This audit covers 136 site locations and assesses the quality of facilities of Trafford's significant outdoor sports activities. The study looks at the distribution of the facilities and identifies areas where there may be poor access to particular outdoor sports facilities. Both quantity and quality need to be considered in assessing adequacy of provision. The audit covers the following pitch types:

- All Weather
- Athletics
- Basketball
- Bowls
- Cricket
- Football
- Gaelic
- MUGA's (Multi Use Games Areas)
- Rugby
- Tennis

This was a desk based project, collating current data to be reviewed and rated by experienced staff in Trafford Sports Development and the Parks and Countryside Service. The data was stored in an Access database and analysed and mapped using MapInfo. Appendix A contains a list of all the site locations, while Appendix B contains a list of all the pitches.

3. Methodology

Quality assessment of public facilities and pitches

The national standard for carry out such audits is the Sport England Pitch Quality Assessment tool which forms part of their Towards a Level Playing Field electronic toolkit. The tool provides a standard approach to assessing the quality of individual pitches and is a non-technical visual quality assessment, undertaken by a surveyor walking a site. There are three forms to complete as part of an Excel spreadsheet which automatically calculates the overall ratings for a site's facilities and each pitch (Appendix C).

With the resources available this methodology was adapted but is still considered a sound methodology delivering robust results. The pitch assessment criteria were condensed into four simplified categories and used to rate all pitches of a particular sport using three levels of rating, Good, Adequate and Poor (Table 1).

Category	Elements from Sport England Pitch Assessment (additions in bold)	Weighting
Pitch Condition	Grass cover - entire pitch / cricket field Length of grass Slope of pitch / cricket outfield (gradient and cross fall) Evenness of pitch / cricket field Problem Areas: Evidence of Dog fouling Problem Areas: Evidence of Glass/ stones/ litter Problem Areas: Evidence of Damage to surface Hard surface breaking up or badly worn	50%
Pitch Markings	Line markings – quality	10%

Equipment	Winter Sports Only – Goal Posts – quality Tennis – quality of nets and enclosure Cricket – Screens and wicket cover	5%
Overall	Size of pitch / cricket field Adequate safety margins Problem Areas: Evidence of Unofficial use Training: Estimated number of hours per week in season Training area Games cancelled due to unfitness of pitch (excluding frozen pitches)	35%

Table 1 – Simplification of Sport England’s Individual Pitch Assessment into four categories.

An example assessment form was created based on an amalgamation of the Sport England site assessment form and the categories of Table 1 and shows the score assigned to each rating (Appendix D). Based on the number of points allocated in the Sport England spreadsheet for each pitch assessment criteria the categories were weighted to give an overall percentage score (table 1). This was used for all the sports except bowls which was assessed on the pitch condition and overall categories. The resulting scores (percentages) were then colour coded based on a traffic light system, in a similar way to the Greenspace 2005 study, where green is for sites which are good, amber for sites which are adequate and red for sites which are poor. Different cut offs were used for the quality scores of facilities and pitches due to the variation in the scores generated by the ratings (table 2).

Category	Facility Score	Pitch Score	Colour
Poor	<40	< 35	Red
Adequate	40 - 59	35 - 79	Amber
Good	>60	>80	Green

Table 2 – Conversion of quality scores to traffic light colouring.

Assessment of sports pitch supply and demand

In October 2003 Sport England introduced its Playing Pitch Model to provide a consistent approach to the strategic planning of outdoor sports provision in terms of supply and demand. The model consists of an eight stage process as follows:

1. Identifying teams
2. Calculating home games per week
3. Assessing total home games per week
4. Establishing temporal demand for games
5. Defining pitches required each day
6. Establishing pitches available
7. Assessing the findings
8. Identifying policy options and solutions

To carry out this type of analysis requires a significant amount of data from sports groups which currently is not held and would be time consuming to collect for this study. Also, some form of user survey would be required to calculate the usage of pitches where there is informal access, e.g. tennis courts, MUGA's and basketball courts in parks. In addition, it was felt that at this time the quality and distribution of facilities and pitches was of a higher priority and that supply was currently satisfactory. In future, the annual survey of sports groups could be tailored to collect the required data so the Sport England Playing Pitch Model could be implemented.

Assessment of public sports pitch distribution by buffering walking distance.

This was carried out by drawing a circle, known as buffering, around each public pitch for each sport. The buffer distances were set at

- **600m to represent a 10 minute walk,**
- **1,200m to represent a 20minute walk**
- **1,800m to represent a 30 minute walk**

.This method is limited in its ability to accurately count the number of residents within a certain distance of a site due to the road network pattern, physical barriers, variations in walking speeds and the location of access points to a site. However, it does allow a quick visual interpretation, highlighting areas which are deficient if they are not covered by the buffers. In terms of car travel, 1,800m would approximate to a 5 to10 minute drive and it was felt that many people use their cars for accessing sports facilities. This is particularly the case for competitive sports where away fixtures would be played and would require longer travelling distances.

Outdoor sports facilities database

The data for this study was collated from a number of paper sources along with discussions with staff in Trafford Sports Development and the Parks and Countryside Service (Appendix E). An Access database was created containing two tables, sites and pitches. The sites table contains details of the address and facilities of a site, and the pitches table contains the number of pitches by sport at each site. Therefore, the relationship between the two tables is one site can have one or more types of sports pitches. Sports pitches were assessed as a whole rather than individually, so if all pitches were not of a similar quality then a comment was made in the pitch comment and a lower rating given. Each site and pitch location was given an X-Y coordinate to allow them to be plotted in MapInfo.

A form was created within the Access database to allow the sites and pitches to be rated as per the example form in Appendix D. This exercise was carried out by Trafford Sports Development and Parks & Countryside Service.

4. Quality Evaluation of Facilities and Pitches

Facilities

The database contains 136 site locations of which 68 are public. The 68 public sites are split between 32 sites with changing facilities (47%) and 36 without (53%). Of those without changing, if those sites where changing facilities are not essential or where access is informal are removed (Tennis,

MUGA'S, Basketball and Bowls), then 11 sites remain (Table 3). Athletics (3 sites), Cricket (2) and Gaelic (1) all have changing facilities.

Quality of Changing Facilities

Of the 32 sites with changing facilities, based on their overall rating, they breakdown as follows: 13 Good, 14 Adequate and 5 Poor (table 4 & figure 1). Of the 13 sites rated as good they are evenly distributed across the borough. Those with a lower score are the result of no segregated changing and problems with vandalism and security.

Site ID	Site Name	Sport	Comments
41	Woodheys School	All Weather	
44	Altrincham Grammar School for Girls	All Weather	
69	South Trafford College	All Weather	
10	Cecil Avenue	Football	
12	Cherry Manor School	Football	School closing
21	Highfield Close	Football	
24	Manor High	Football	
27	Nansen Park	Football	
29	Oldfield Brow	Football	
30	Salisbury Road	Football	Football Club operate their own private changing room
50	Clarendon Crescent Recreation Ground	Football & Rugby	

Table 3 – Sites without changing facilities excluding tennis, MUGA's, basketball and bowls.

Facilities rated as adequate are distributed across Trafford and could be improved to good if the following issues were addressed:

- Flixton Fields, Flixton Park, Seymour Park all have low ratings for their showers.
- Navigation Recreation Ground and Urmston Grammar School are just below the good category due to problems with vandalism and having adequate showers & toilets.
- Sylvan Avenue, Hale Croft Park, Grove Park all have a problem with parking.

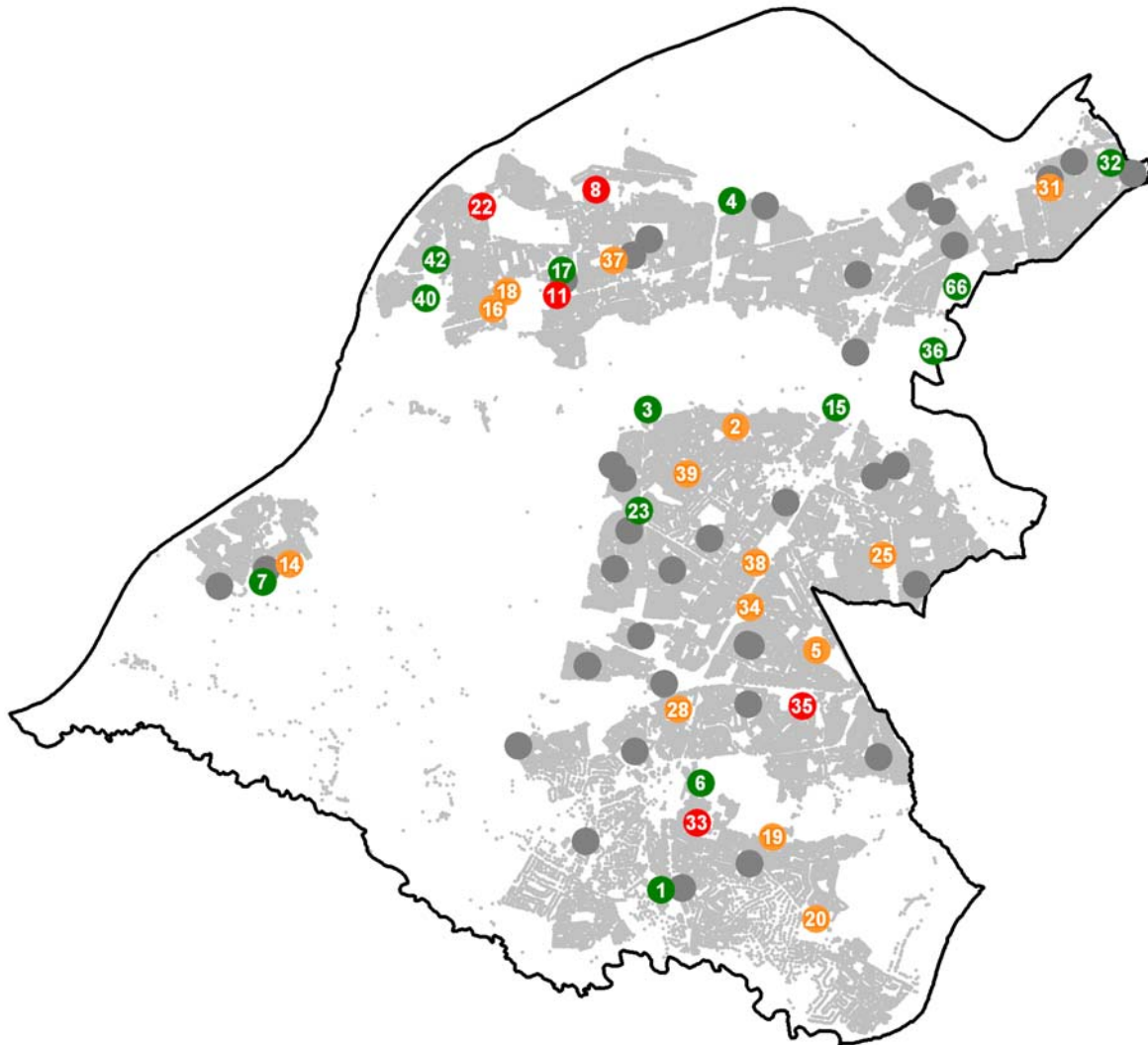
5 facilities are rated as poor, with 3 concentrated in Urmston and the remaining 2 located in Timperley and Altrincham. Lees Field is bottom having been scored poor for every category and requires serious investment if its overall rating is to be improved. Second from bottom is Broadway which is let down by problems with vandalism, which if solved would put it into the adequate category. Chassen Road, Stamford Park and Timperley Recreation Ground require improvements to their shower and toilet facilities to give them an adequate score.

Site Name	Site ID	Overall Quality	Vandalism	Showers	Toilets	Parking	Public Transport	Security	Segregation	Overall Rating *
Longford Park	66	9	5	5	5	3	5	5	3	100
Altrincham Grammar School for Boys	1	9	5	5	5	3	5	5	0	93
Blessed Thomas Holford School	6	9	5	5	5	0	2	5	3	85
Crossford Bridge	15	6	2	5	5	3	5	5	3	85
Banky Lane	3	9	2	5	5	3	0	2	3	73
Broad oak High	7	9	2	5	5	3	0	2	3	73
Barton Clough	4	6	2	5	5	3	2	2	3	70
Wellacre High School	40	6	2	3	3	3	2	5	3	68
St Brides	32	6	2	3	5	2	2	5	0	63
Woodsend Park	42	6	2	5	5	3	2	2	0	63
Turn Moss	36	6	2	3	3	3	2	5	0	60
Flixton Girls High School	17	6	2	3	3	3	5	2	0	60
Manor Avenue	23	6	2	5	5	2	2	2	0	60
Navigation Recreation Ground	28	6	2	3	3	2	5	2	0	58
Urmston Grammar School	37	6	2	3	3	2	5	2	0	58
Flixton Fields	18	6	2	1	3	3	5	2	0	55
Flixton Park	16	6	2	1	3	3	5	2	0	55
Seymour Park	31	3	5	1	3	3	2	5	0	55
Ashton Park	2	6	2	3	3	0	2	5	0	53
Beech Avenue	5	6	2	3	3	3	2	2	0	53
Moor Nook Park	25	6	2	3	3	2	2	2	0	50
Walton Park	38	6	2	3	3	2	2	2	0	50
Cross Lane Recreation Ground	14	6	2	3	3	3	0	2	0	48
Weathercock Farm	39	6	2	1	3	2	2	2	0	45
Sylvan Avenue	34	6	2	3	3	0	2	2	0	45
Hale Croft Park	20	6	2	3	5	0	0	2	0	45
Grove Park	19	6	2	3	3	0	0	2	0	40
Timperley Recreation Ground	35	3	2	1	1	2	2	2	0	33
Stamford Park	33	3	2	1	3	0	2	2	0	33
Chassen Road	11	3	2	1	1	0	2	2	0	28
Broadway	8	3	0	3	3	0	0	2	0	28
Lees Field	22	3	0	1	1	0	0	0	0	13

Table 4 – Public sites with changing facilities, ordered by overall rating*.

* Overall Rating – Sites are scored out of a total of 40 which is then factored up to a percentage

Figure 1. Public Outdoor Sports Facilities - Quality Rating of Changing Facilities.



Key

- **Poor**
- **Adequate**
- **Good**
- **No Changing**



Residential Area (Property Points - LLPG)

Reproduced from the Ordnance Survey mapping with the permission of the Controller of Her Majesty's Stationery Office © Crown copyright. Unauthorised reproduction infringes Crown copyright and may lead to prosecution or civil proceedings. Trafford Borough Council. OS Licence No. LA076392 20006

5 Issues from Quality Assessment

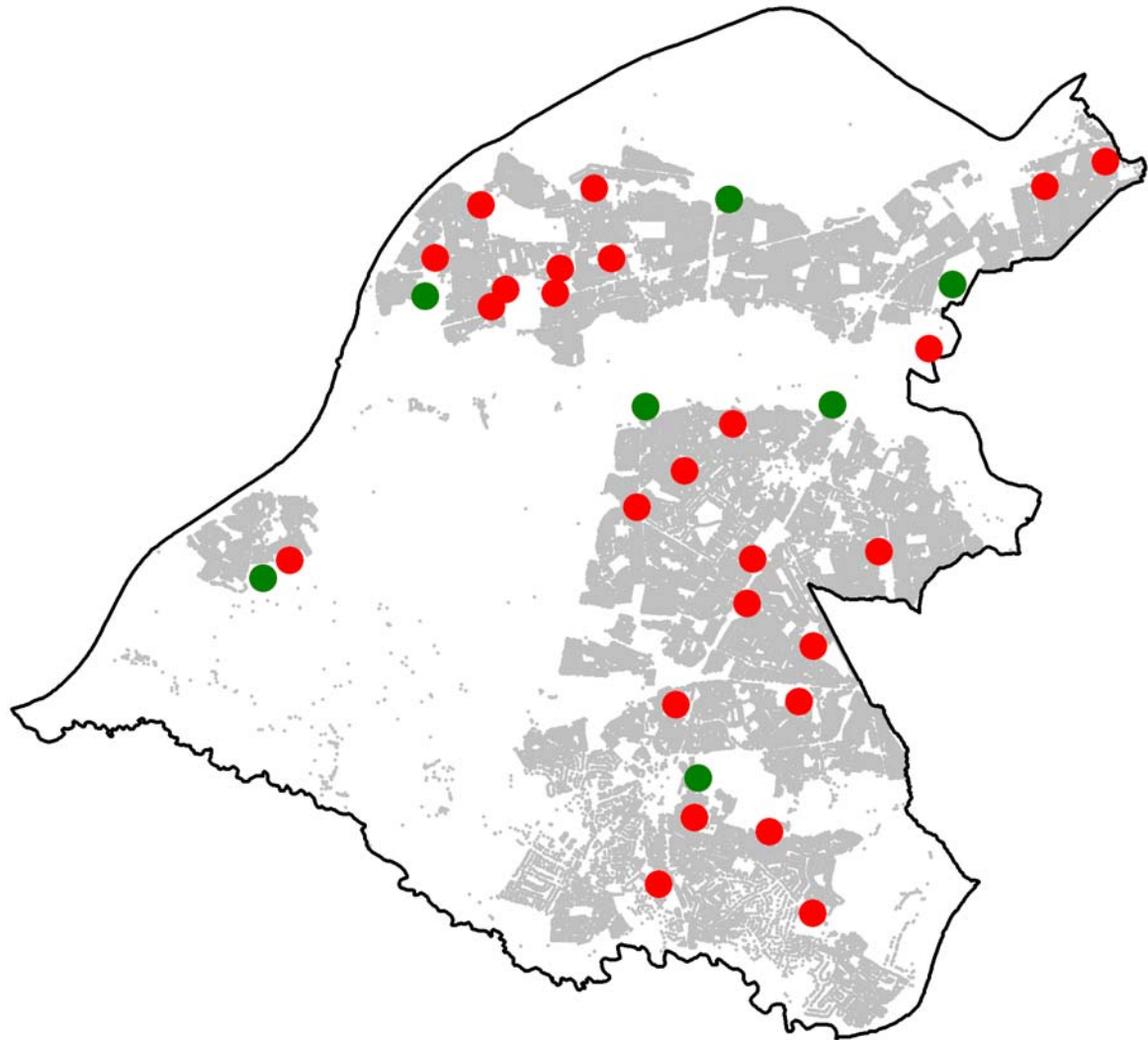
Vandalism

Of the 32 sites only four do not have a problem with vandalism. This problem is worst at Broadway and Lees Field where there is considered to be a lot.

Changing Facilities

- Off the 43 sites where changing facilities are considered to be necessary 11 (25%) have no facilities
- 8 Sites have poor showers which in addition to the previously mentioned sites also includes Weathercock Farm.
- Only 7 sites have segregated changing (22%) and are well spread across the borough (figure 2). These sites overall are rated as good. Of the six good sites without segregated changing, two are single sex schools: Altrincham Grammar School for Boys and Flixton Girls High School.

Figure 2. Public Outdoor Sports Facilities - Segregated Changing Facilities.



Key

- No
- Yes



Residential Area (Property Points - LLPG)

Reproduced from the Ordnance Survey mapping with the permission of the Controller of Her Majesty's Stationery Office © Crown copyright. Unauthorised reproduction infringes Crown copyright and may lead to prosecution or civil proceedings. Trafford Borough Council. OS Licence No. LA076392 20006

6. Quantity and quality Audit by Sport Type

All Weather

There are 10 public all weather sites split between 8 Senior and 2 Junior pitches, all of a good quality. There are 4 private sites with a total of 5 Senior pitches felt to be of a good quality, including Manchester United's Training Ground which allows some limited community access. Areas which do not have an all weather pitch nearby include: Stretford, the north and west of Sale, the west of Timperley near the border with Manchester and Hale Barns.

	Sites	No of Pitches
Public	10	10
Private	4	5

Table 5. Split Between Public and Private All Weather Sites

Pitch ID	Site Name	Senior	Junior	Overall Rating
68	Altrincham Grammar School for Boys	1		100
70	Flixton Girls High School	1		100
80	Broad oak High	1		100
222	Blessed Thomas Holford School	1		100
74	Woodheys School		1	98
72	Urmston Grammar School	1		97
73	Wellacre High School	1		97
76	South Trafford College	1		97
71	Seymour Park		1	95
75	Altrincham Grammar School for Girls	1		87

Table 6. Public all weather sites ordered by their overall rating.

Issues

- There is no problem with the quality of these facilities. The provision of new facilities in areas that are over 1,800 m away from existing facilities would improve local access, for example in Hale, Sale East and Stretford.

All Weather

Site Location with Pitch ID

- 1 Public
- 1 Private

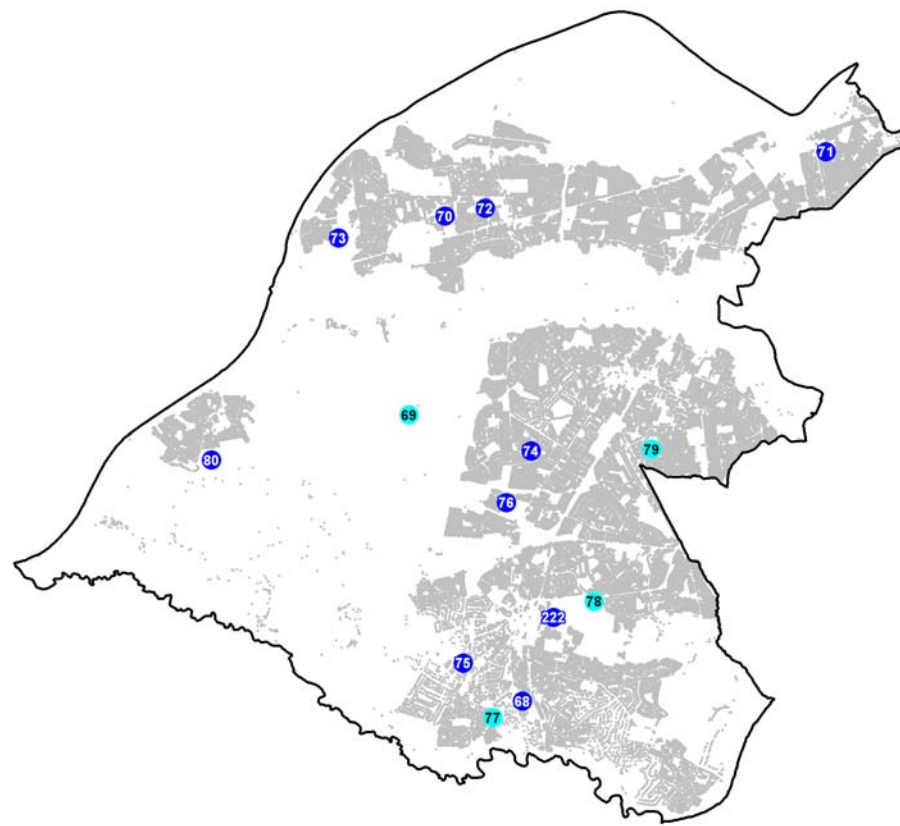
Quality Rating of Public Pitches

- Poor
- Adequate
- Good

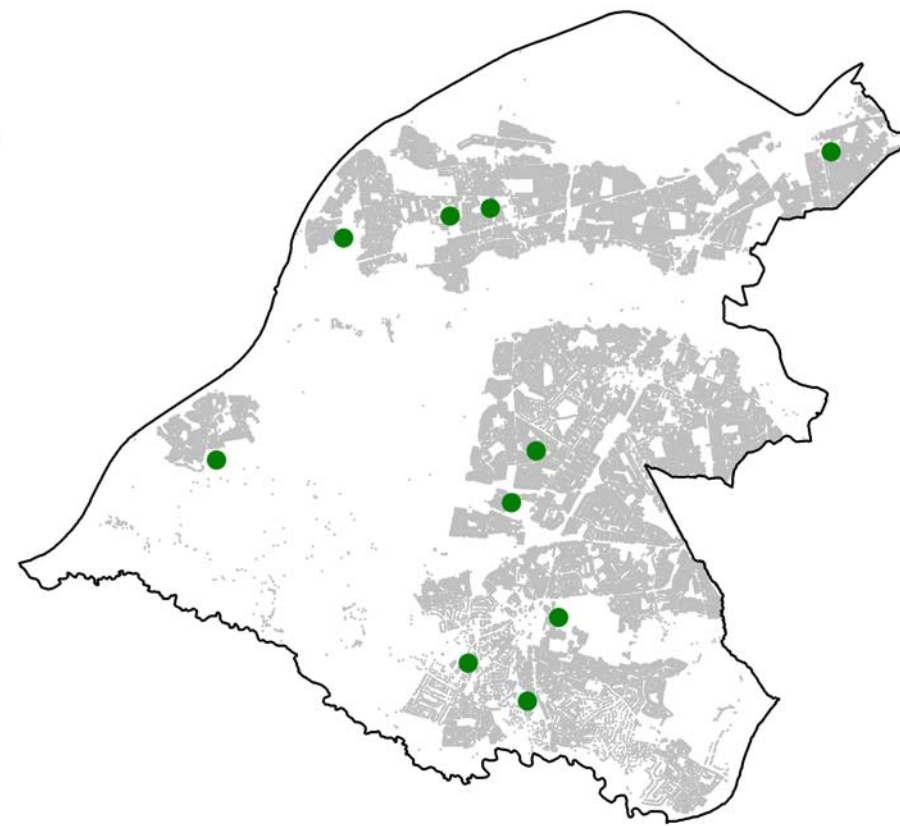
Residential Area

- Property Points (LLPG)

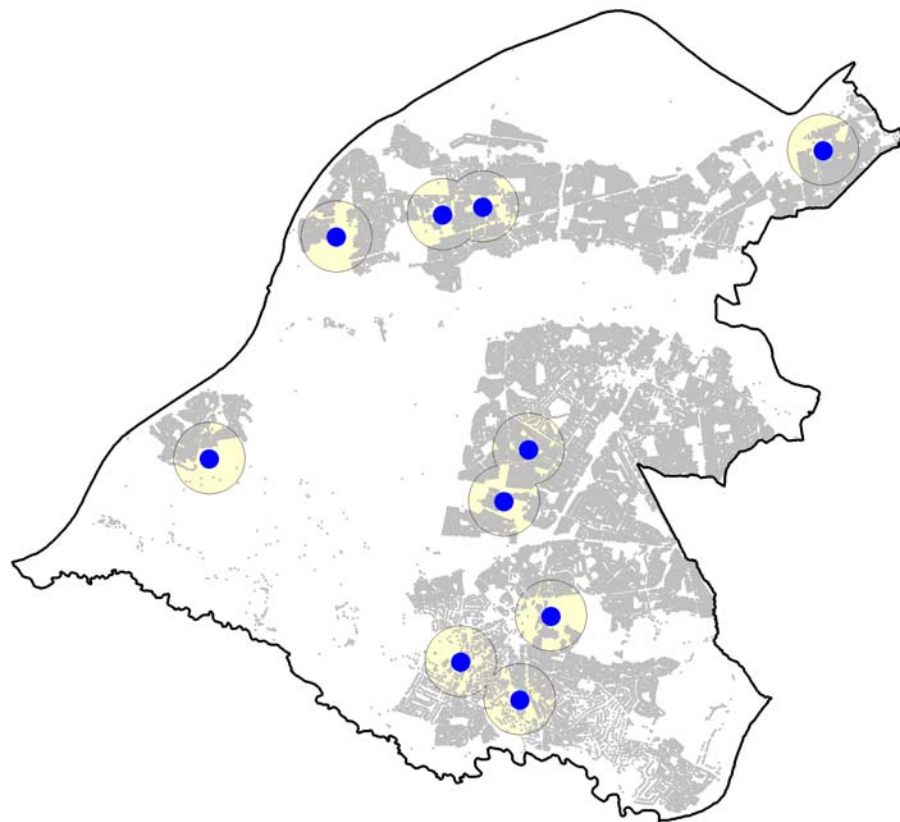
Reproduced from the Ordnance Survey mapping with the permission of the Controller of Her Majesty's Stationery Office © Crown copyright. Unauthorised reproduction infringes Crown copyright and may lead to prosecution or civil proceedings. Trafford Borough Council. OS Licence No. LA076392 20006



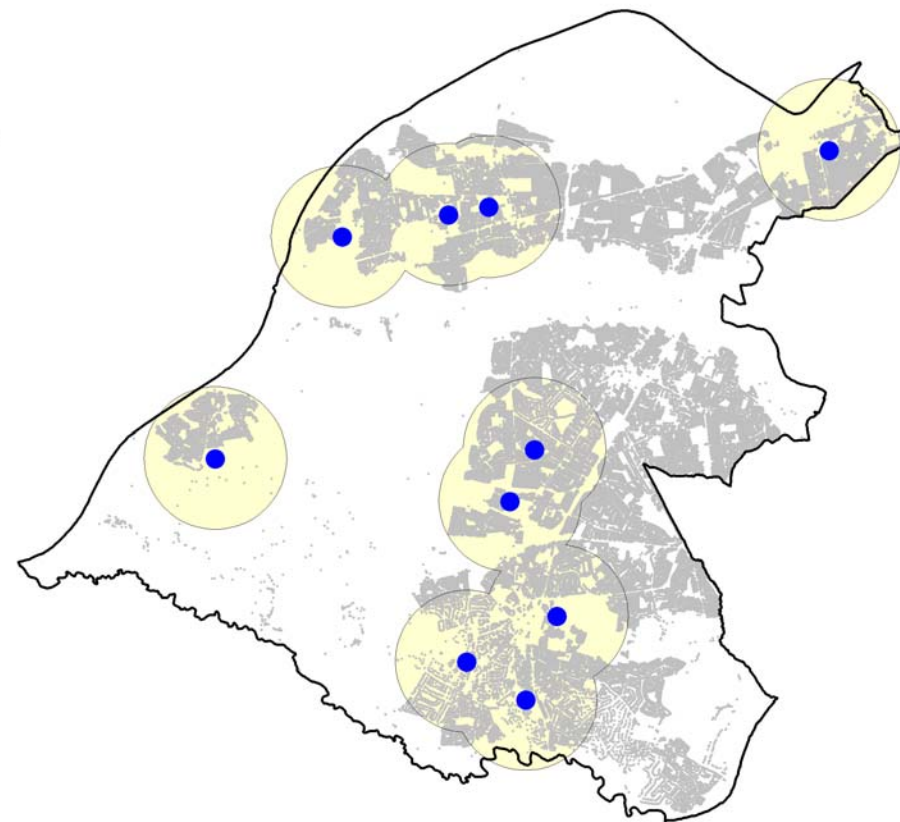
Ownership



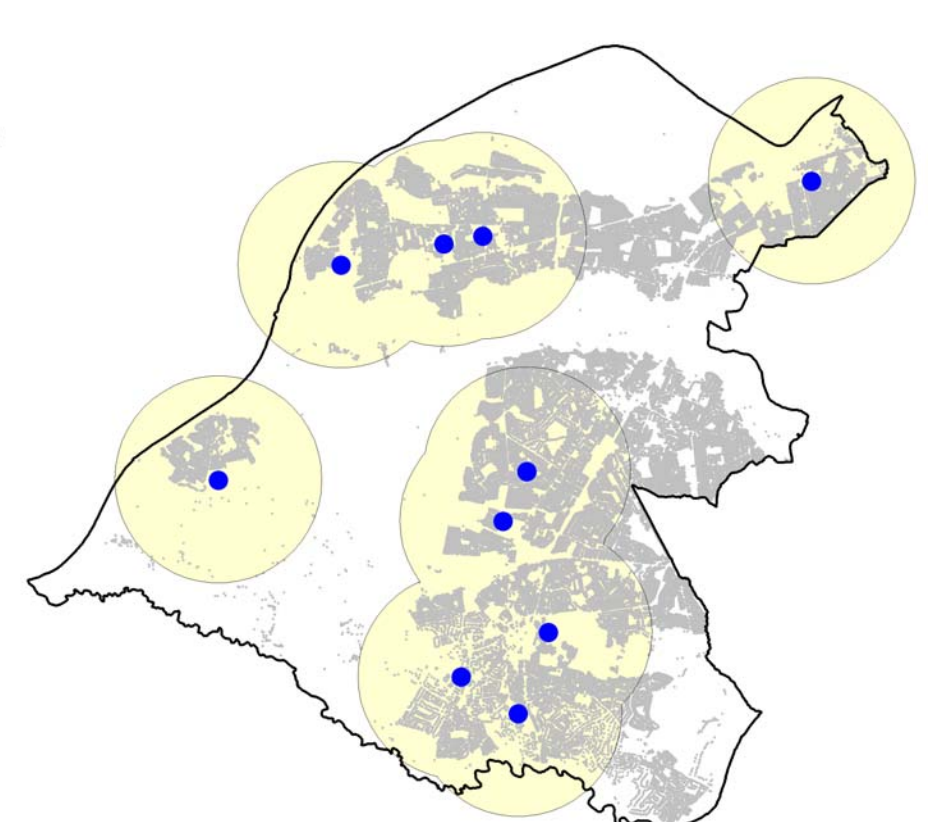
Quality Rating of Public Pitches



600m Buffer of Public Pitches



1,200m Buffer of Public Pitches



1,800m Buffer of Public Pitches

Athletics

There are three athletics facilities in the borough, all publicly accessible. Longford Park is home to Trafford Athletics Club and located on the boundary with Manchester. It is of a high quality, meets the standards of a regional facility and is being used regularly for competitions. Timperley Recreation Ground is located close to the boundary with Manchester and Crossford Bridge is located at the far north of Sale in the greenbelt of the Mersey Valley. Both these sites are training facilities for athletics but also heavily used by an increasing variety of other sports. Crossford Bridge although home to Sale Harriers is used by over a 1000 users at the weekend. Consequently these facilities at the 1,200 & 1,800m buffer level cover large areas not populated by Trafford residents and large areas of the population are a distance from these facilities, such as Urmston and Partington. With the high quality facilities providing for a diversity of sports and the close proximity of Crossford Bridge to the motorway it is likely many users are travelling from outside Trafford. However, for a borough the size of Trafford to have three athletics facilities is considered to be excellent, therefore, the development of new facilities to provide for areas not covered is unlikely. Longford Park is rated as good, whereas Crossford Bridge and Timperley Recreation Ground are adequate. Although all have been provided with floodlighting in the last few years there are still some improvements needed.

	Sites	No of Tracks
Public	3	3
Private	0	0

Table 7. Split Between Public and Private Athletics Sites

Pitch ID	Site Name	Overall Rating
84	Longford Park	100
83	Crossford Bridge	67
85	Timperley Recreation Ground	67

Table 8. Public athletics sites ordered by their overall rating.

Issues

- There is a need to improve facilities at Crossford Bridge and Timperley Recreation Ground.
- The increasing use of these sites for other sports is putting pressure on the capacity of the sites infrastructure for example car parking.

Athletics

Site Location with Pitch ID

- 1 Public
- 1 Private

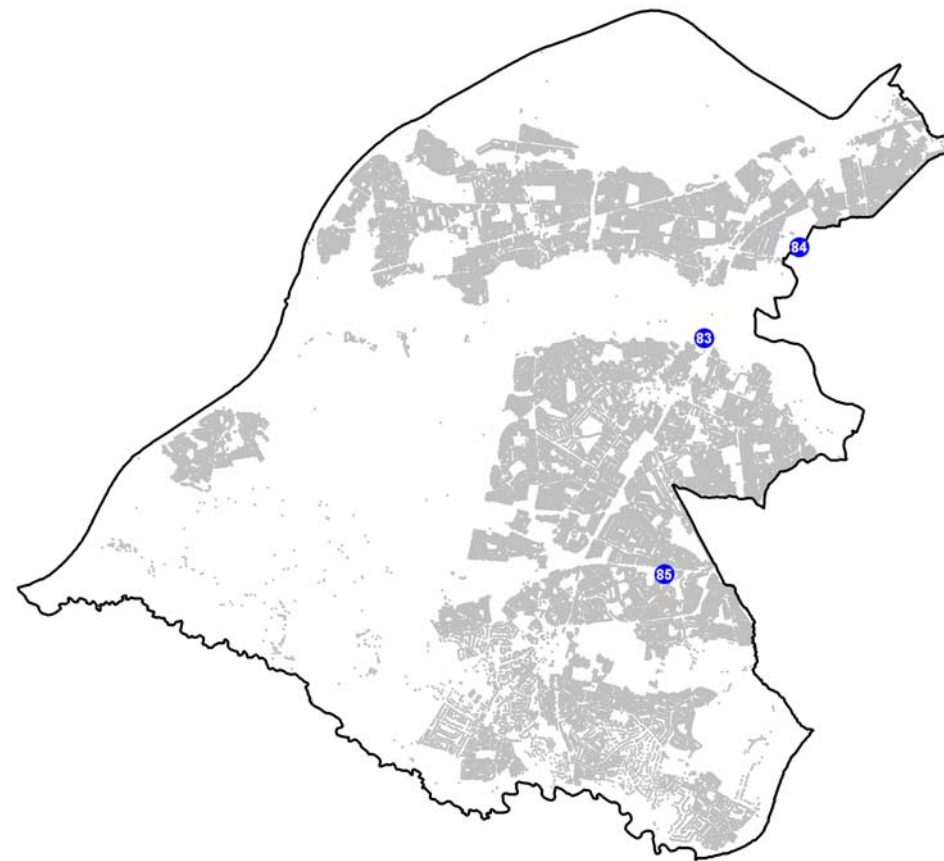
Quality Rating of Public Pitches

- Poor
- Adequate
- Good

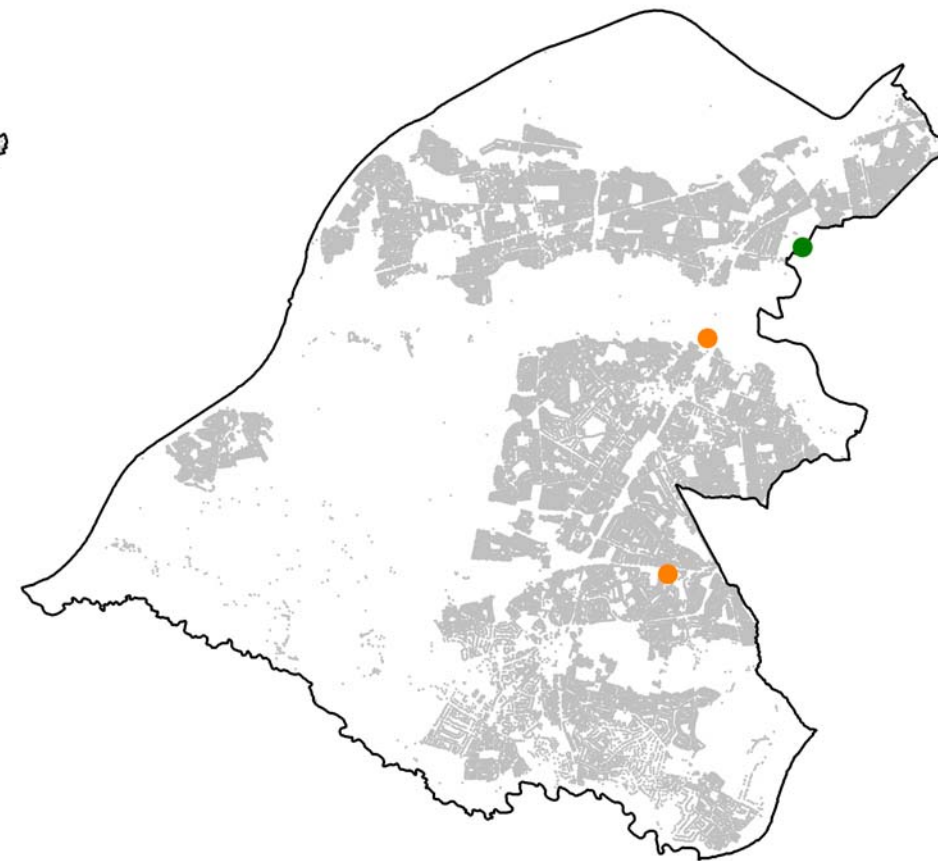
Residential Area

- Property Points (LLPG)

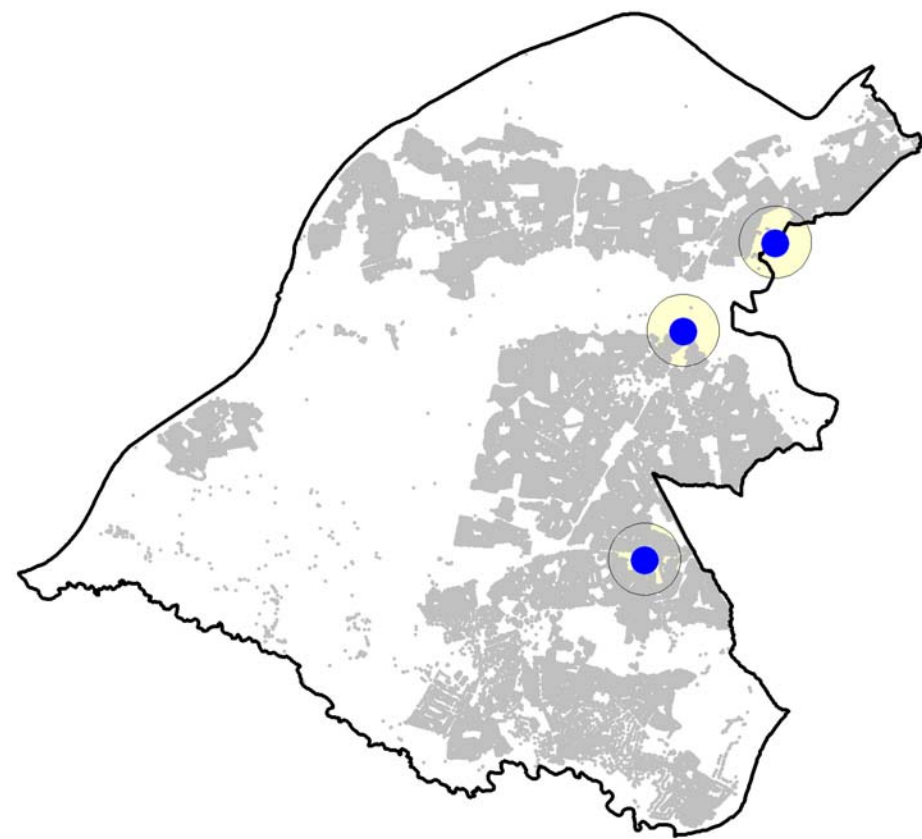
Reproduced from the Ordnance Survey mapping with the permission of the Controller of Her Majesty's Stationery Office © Crown copyright. Unauthorised reproduction infringes Crown copyright and may lead to prosecution or civil proceedings. Trafford Borough Council. OS Licence No. LA076392 20006



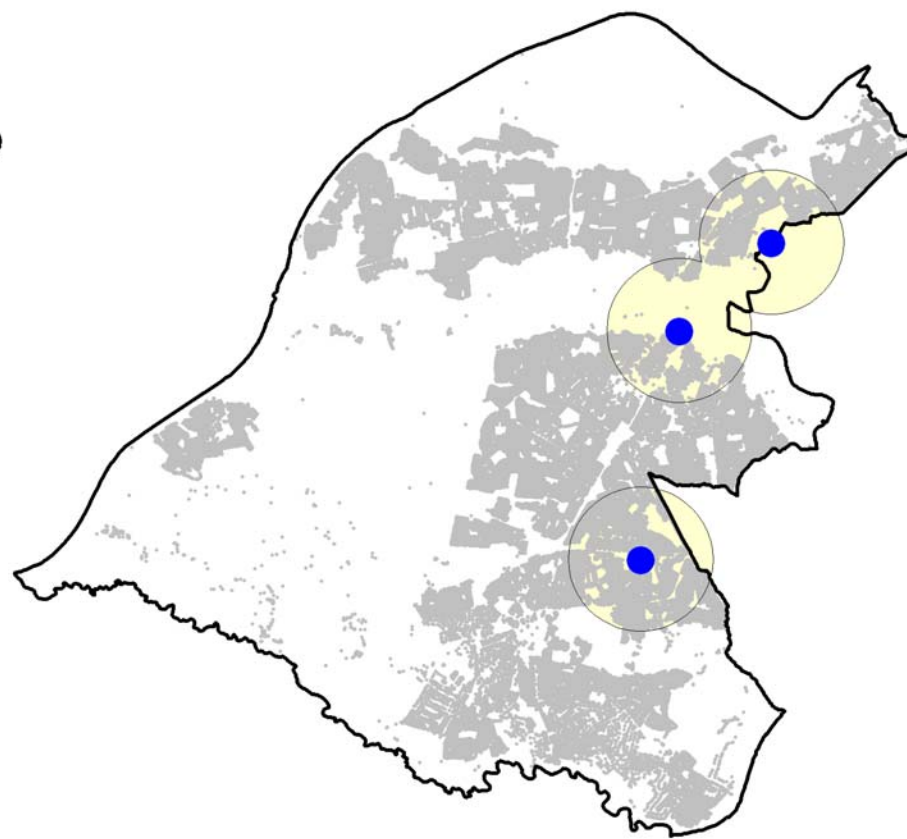
Ownership



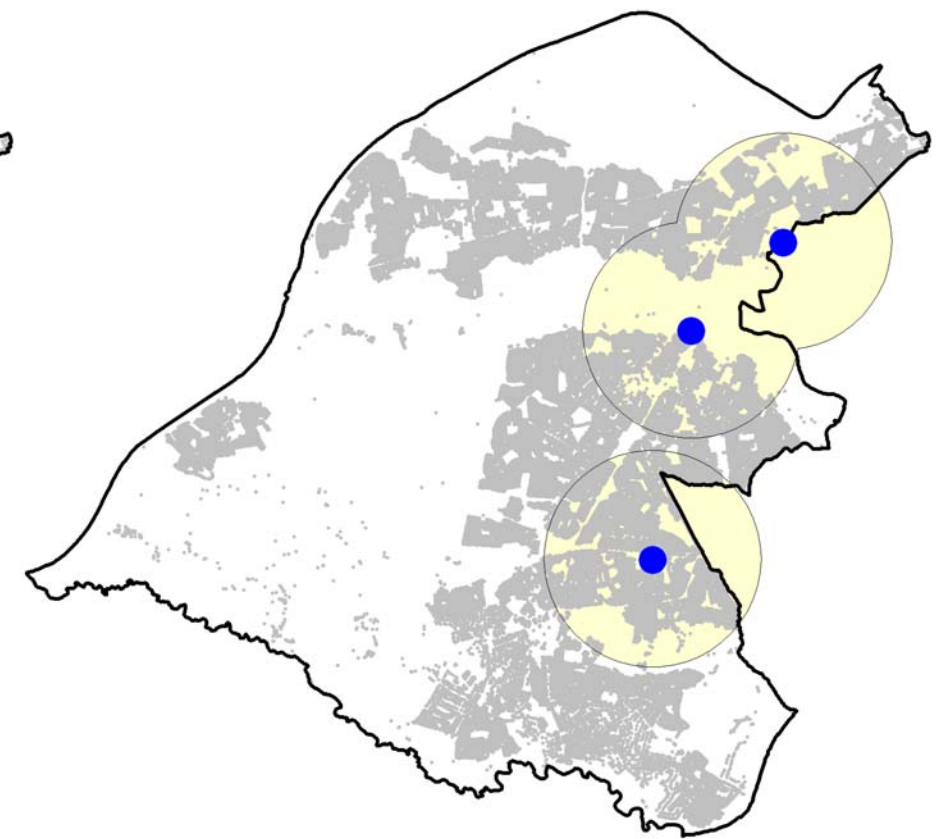
Quality Rating of Public Pitches



600m Buffer of Public Pitches



1,200m Buffer of Public Pitches



1,800m Buffer of Public Pitches

Basketball

There are 14 public basketball locations which are well distributed. At the 1,800m buffer distance the areas not covered included the west part of Sale, Bowden, the east part of Hale and Hale Barns. 4 Sites are rated as good and are spread out across Trafford, however, Sale and Hale Barns are some distance from these sites.

	Sites	No of Courts
Public	14	15
Private	0	0

Table 9. Split Between Public and Private Basketball Sites

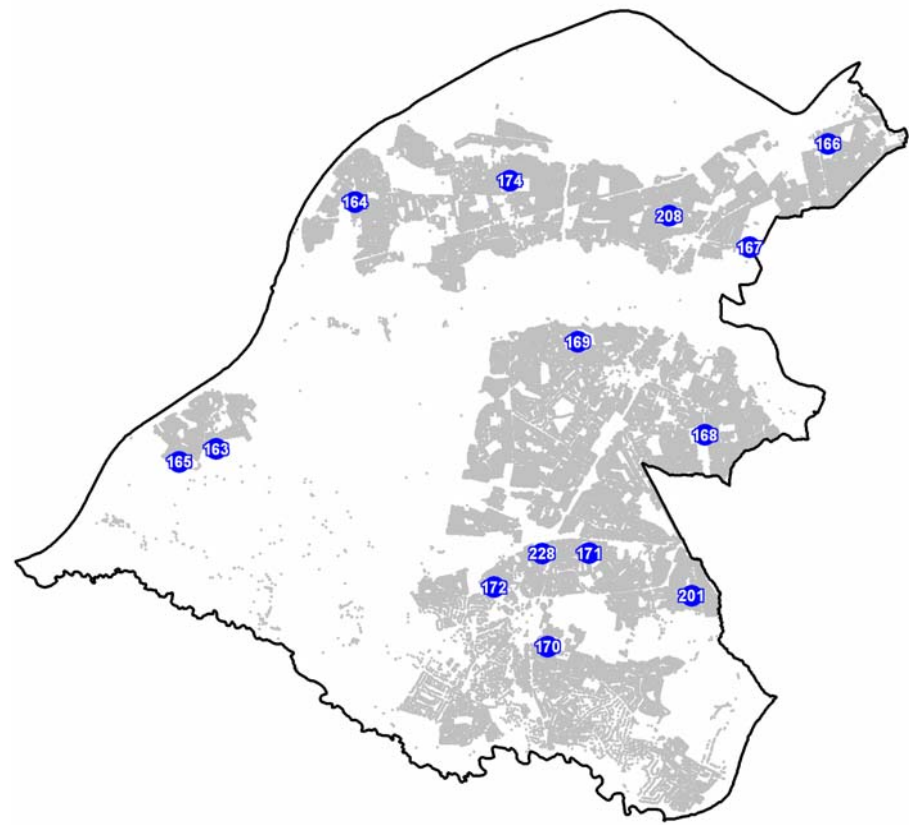
Pitch ID	Overall Rating	Overall Rating
163	Partington Leisure Centre	100
166	Old Trafford Youth Centre	100
228	Navigation Recreation Ground	100
174	Davyhulme Park	98
167	Longford Park	67
168	Moor Nook Park	67
170	Stamford Park	67
171	Pickering Lodge	67
208	Victoria Park	67
164	Woodsend Park	0
165	Oak Road Car Park	0
169	Ashton Park	0
172	John Leigh Park	0
201	Broomwood Play Area	0

Table 10. Public basketball sites ordered by their overall rating.

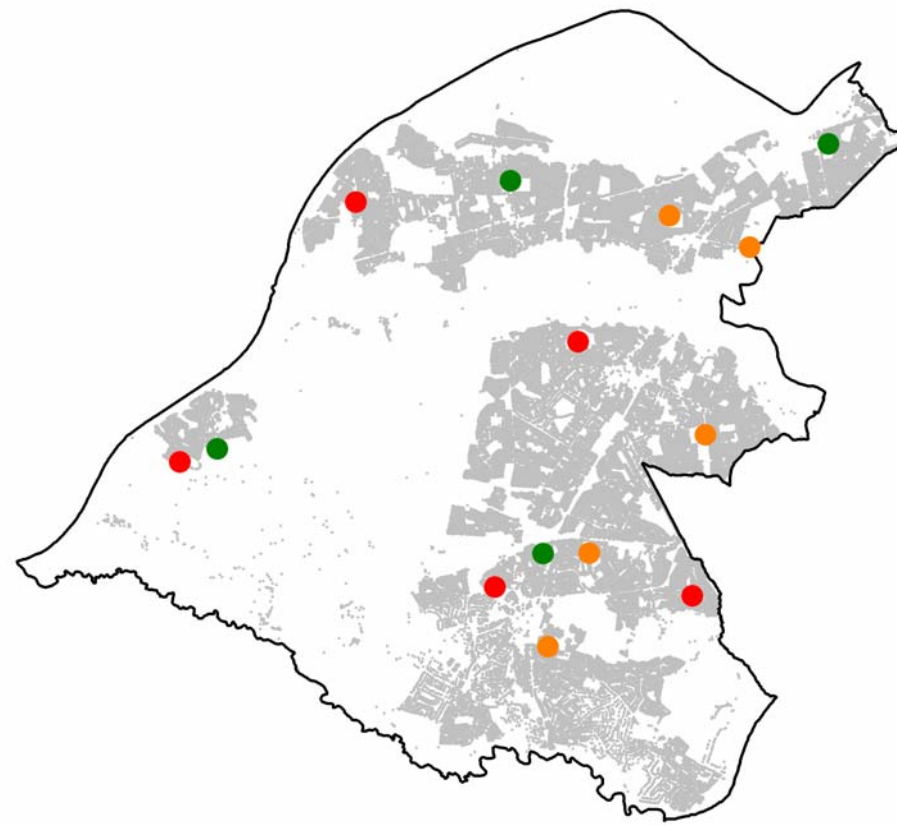
Issues

- With nearly a third of facilities of poor quality improvements are needed. Sale is particularly poorly provided for.

Basketball



Ownership



Quality Rating of Public Pitches

Site Location with Pitch ID

- 1 Public
- 1 Private

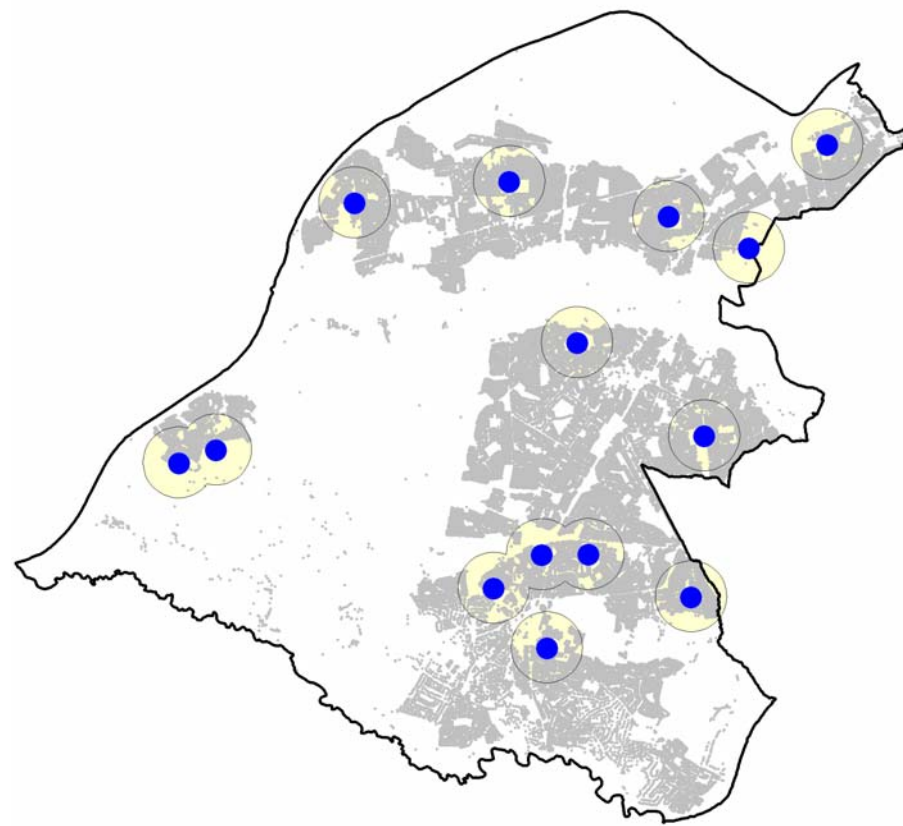
Quality Rating of Public Pitches

- Poor
- Adequate
- Good

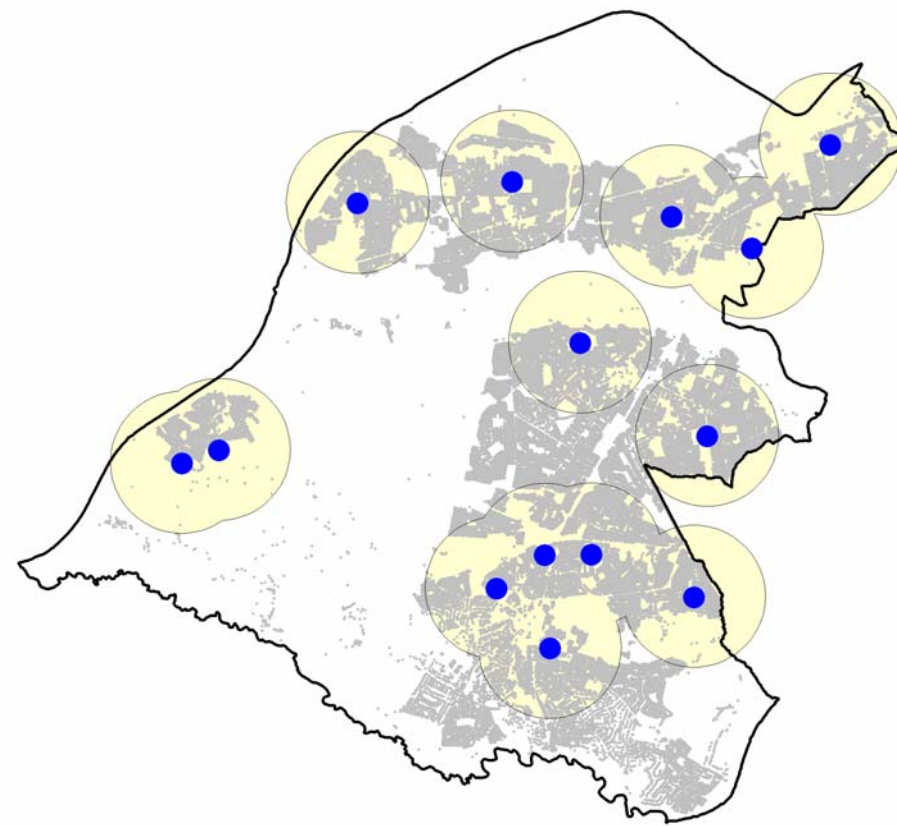
Residential Area

- Property Points (LLPG)

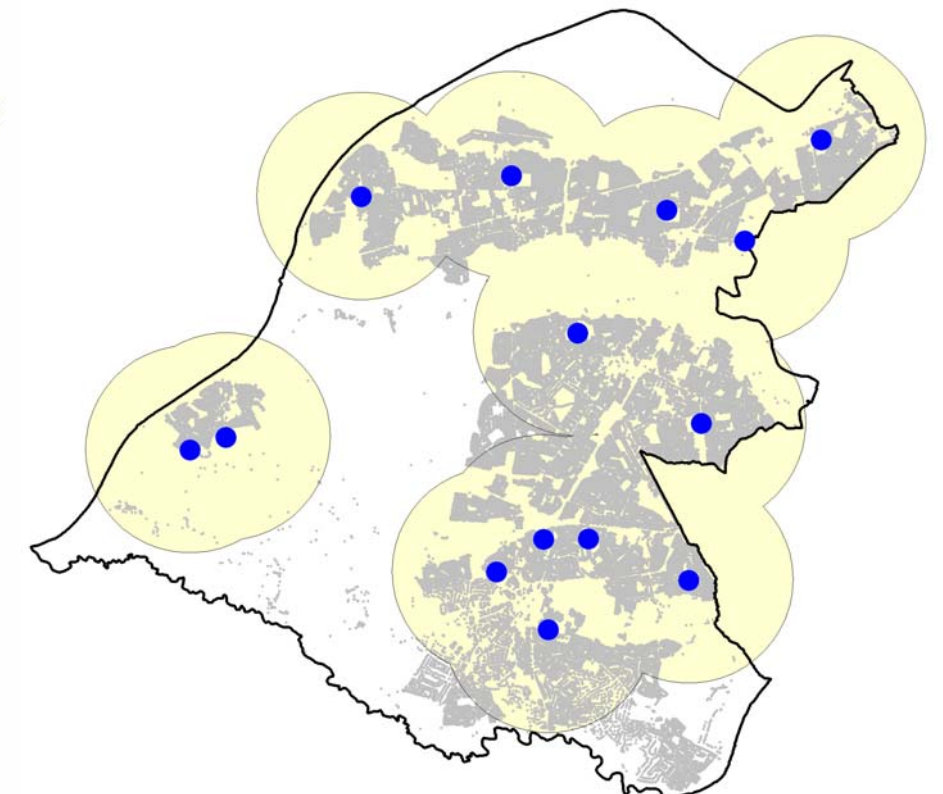
Reproduced from the Ordnance Survey mapping with the permission of the Controller of Her Majesty's Stationery Office © Crown copyright. Unauthorised reproduction infringes Crown copyright and may lead to prosecution or civil proceedings. Trafford Borough Council. OS Licence No. LA076392 20006



600m Buffer of Public Pitches



1,200m Buffer of Public Pitches



1,800m Buffer of Public Pitches

Bowls

There are 28 locations of public bowling greens and 38 private. Details about the quality of the public sites is incomplete, however, those that have been independently rated as part of the Parks and Countryside Service's greenspace assessment are rated as good. A quality audit of pavilions has yet to be completed. The public sites are well distributed and at the 1,800m buffer level most of the borough is covered except for Hale Barns and small parts of Urmston, Bowden and Timperley.

	Sites	No of Greens
Public	20	28
Private	38	39

Table 11. Split Between Public and Private Bowls Sites

Pitch ID	Site Name	Greens	Overall Rating
86	Abbotsfield Park	1	100
88	Ashton Park	2	100
89	Cross Lane Recreation Ground	1	100
90	Davyhulme Park	2	100
91	Golden Hill Park	1	100
93	Hullard Park	1	100
95	John Leigh Park	1	100
96	Longford Park	2	100
97	Lostock Park	1	100
98	Moor Nook Park	1	100
99	Navigation Recreation Ground	1	100
100	Pickering Lodge	2	100
103	Stamford Park	2	100

104	Victoria Park	2	100
107	Worthington Park	2	100
87	Ashley Road	1	?
92	Hale Road	1	?
102	Riddings Road	1	?
105	Walton Park	2	?
190	Broadway	1	?

Table 12. Public bowling greens ordered by their overall rating.

Issues

- A good spread of facilities across the borough. An additional facility in Hale and Flixton would improve local access to facilities.

Bowls

Site Location with Pitch ID

- 1 Public
- 1 Private

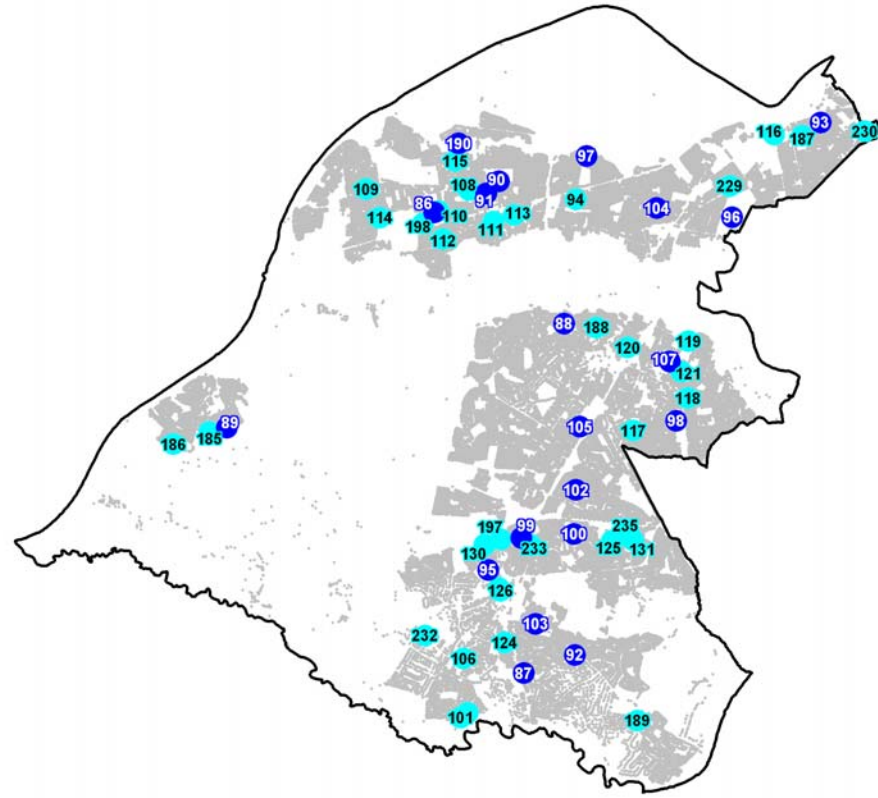
Quality Rating of Public Pitches

- Poor
- Adequate
- Good
- Unknown

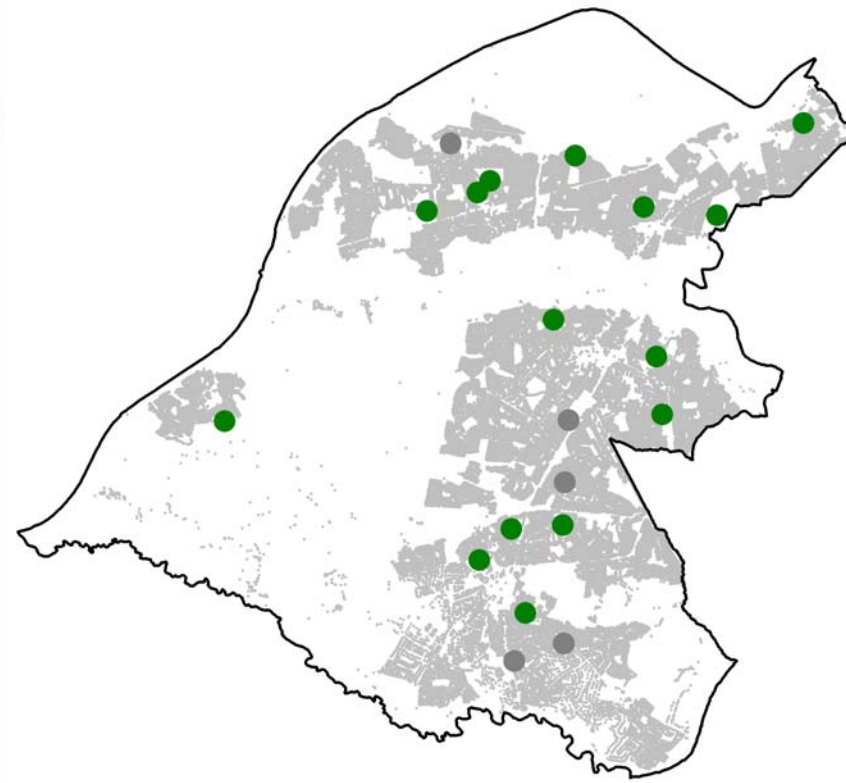
Residential Area

- Property Points (LLPG)

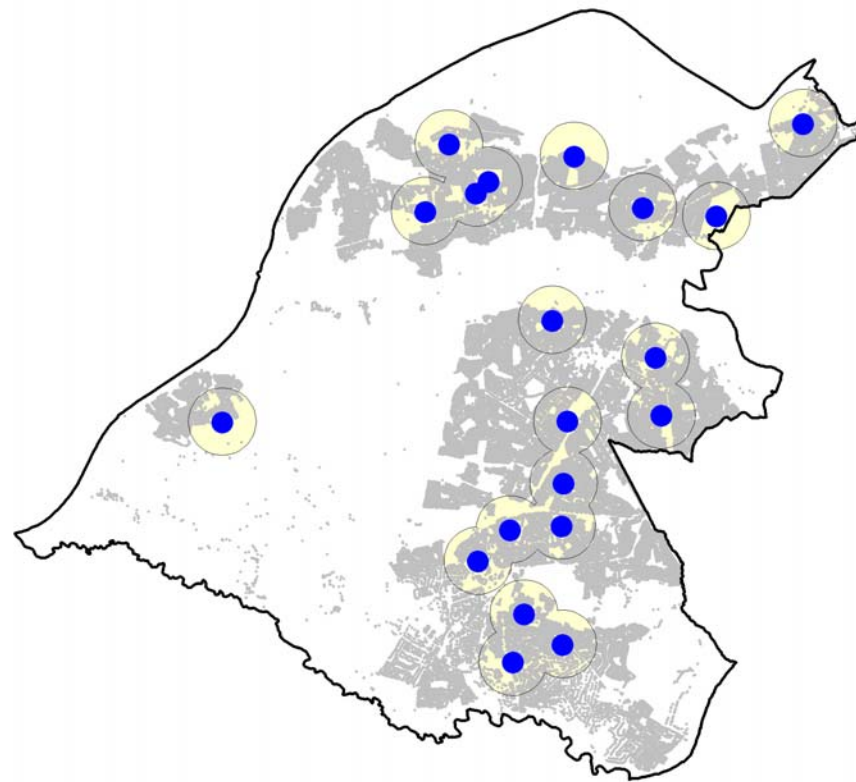
Reproduced from the Ordnance Survey mapping with the permission of the Controller of Her Majesty's Stationery Office © Crown copyright. Unauthorised reproduction infringes Crown copyright and may lead to prosecution or civil proceedings. Trafford Borough Council. OS Licence No. LA076392 20006



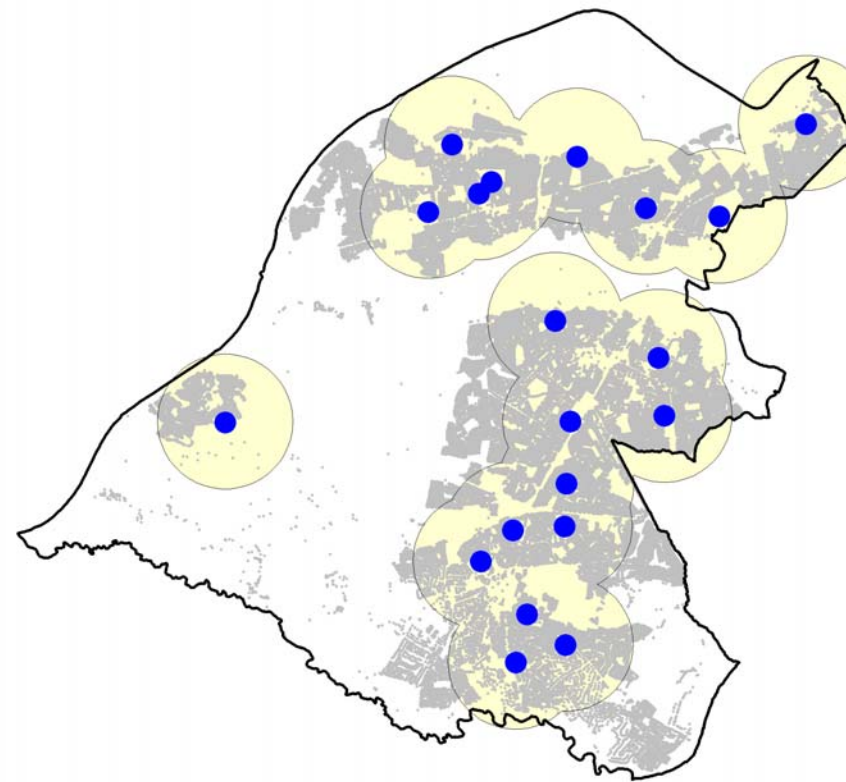
Ownership



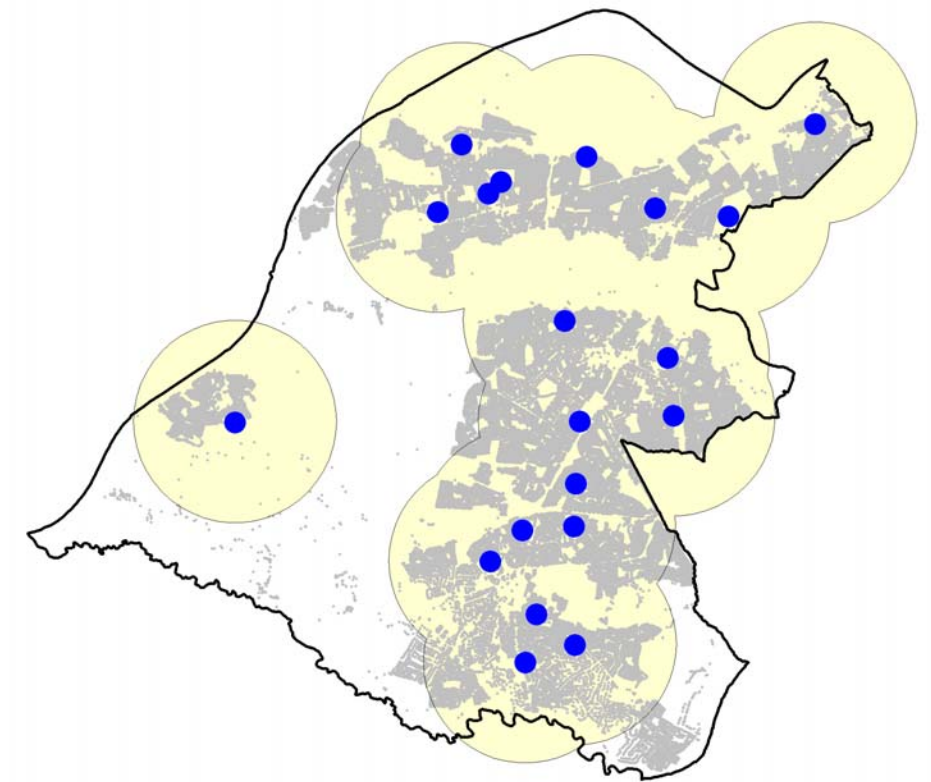
Quality Rating of Public Pitches



600m Buffer of Public Pitches



1,200m Buffer of Public Pitches



1,800m Buffer of Public Pitches

Cricket

There are 2 public pitches of adequate quality and 12 private clubs and facilities. The public sites are located at the far north of Sale at Crossford Bridge and the far north east of the borough at St Brides, Old Trafford. Consequently these facilities at the 1,200 & 1,800m buffer level cover large areas not populated by Trafford residents resulting in the majority of the borough not being covered. Private facilities are of a higher quality and offer some solution to the poor distribution of public sites. Development work to encourage junior participation in cricket is ongoing and a good relationship exists between the private clubs for school and community use. However, the west part of Sale and Partington have no facilities available.

	Sites	No of Pitches
Public	2	2
Private	12	14

Table 13. Split Between Public and Private Cricket Sites

Pitch ID	Site Name	Overall Rating
56	Crossford Bridge	67
223	St Brides	67

Table 14. Public cricket sites ordered by their overall rating.

Issues

- There is a need to improve current facilities. If there is demand, look to increasing the number of facilities available.
- Provision within schools could encourage junior participation in areas without access to private club facilities.

Cricket

Site Location with Pitch ID

- 1 Public
- 1 Private

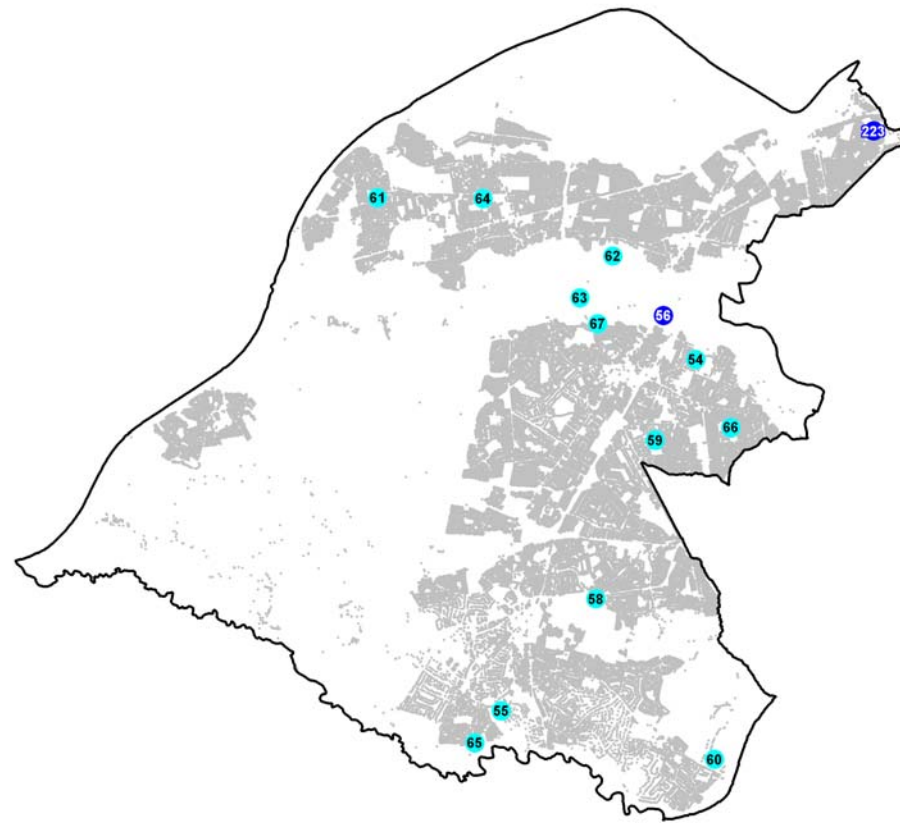
Quality Rating of Public Pitches

- Poor
- Adequate
- Good

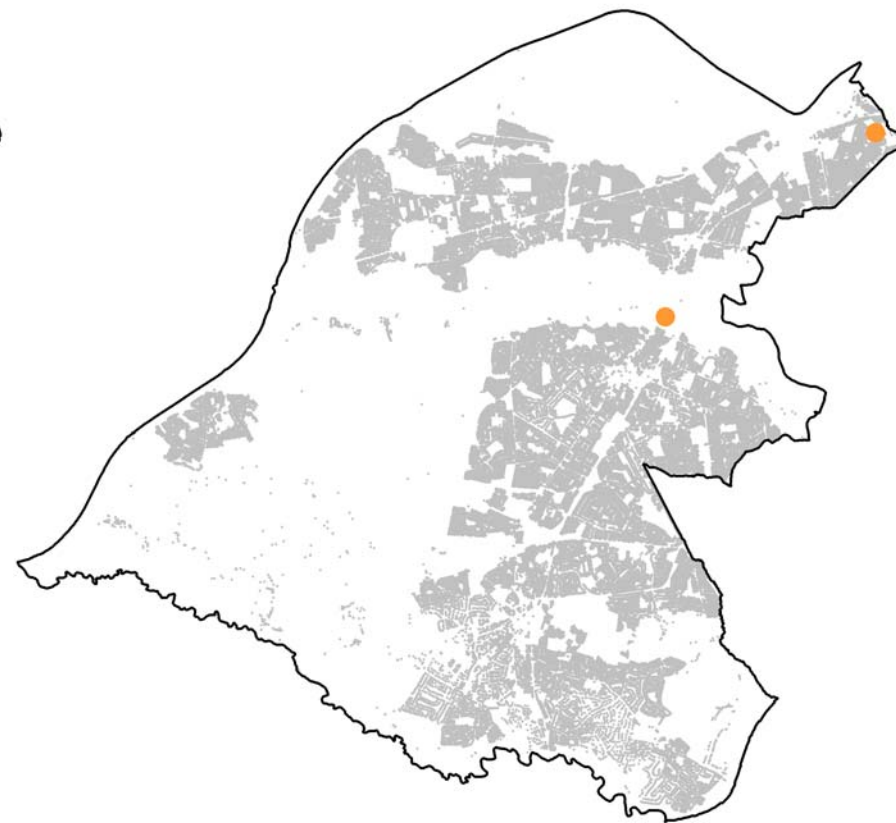
Residential Area

- Property Points (LLPG)

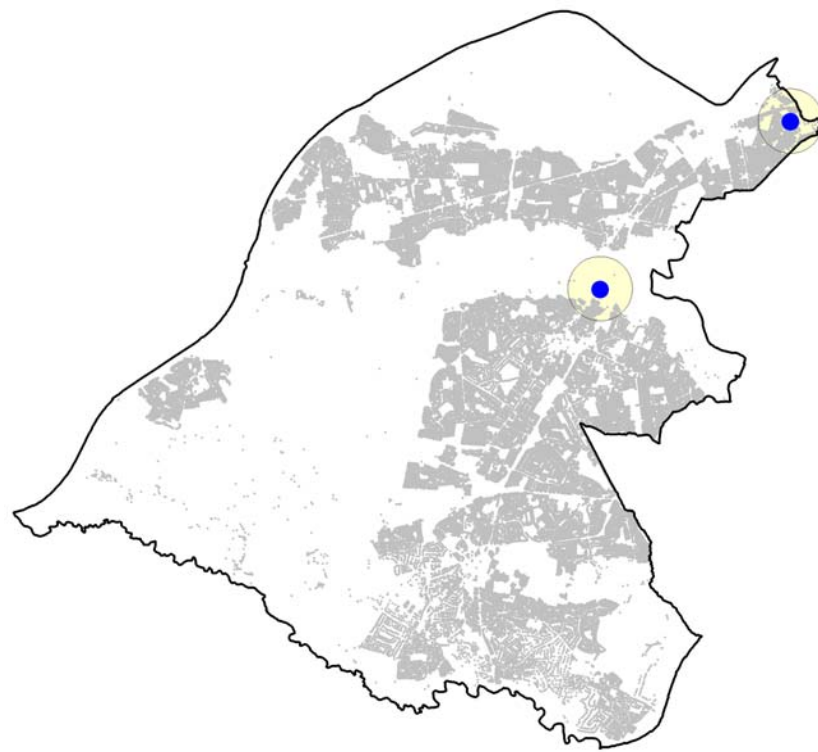
Reproduced from the Ordnance Survey mapping with the permission of the Controller of Her Majesty's Stationery Office © Crown copyright. Unauthorised reproduction infringes Crown copyright and may lead to prosecution or civil proceedings. Trafford Borough Council. OS Licence No. LA076392 20006



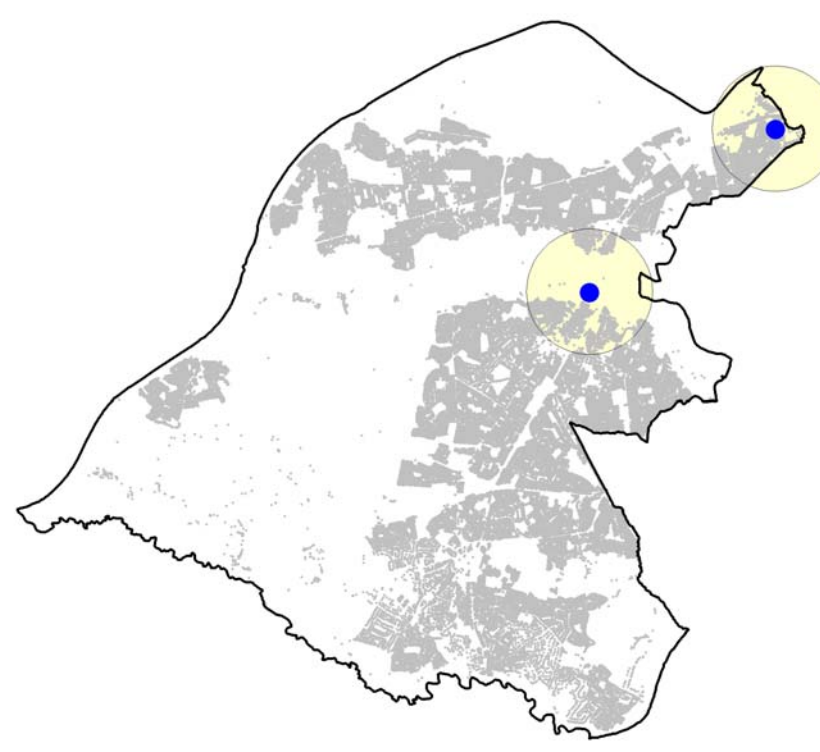
Ownership



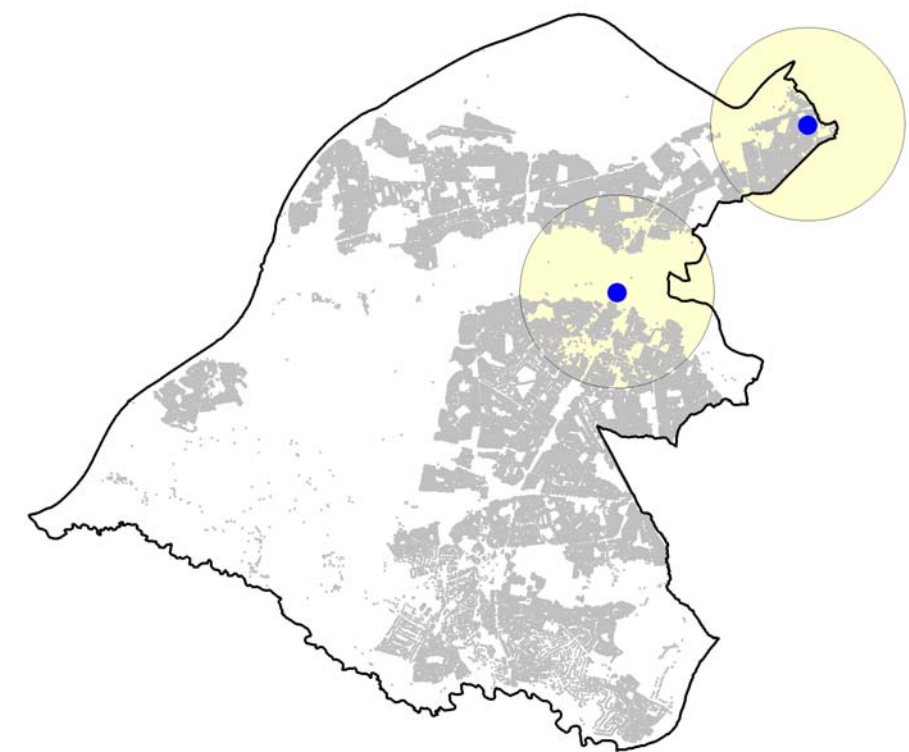
Quality Rating of Public Pitches



600m Buffer of Public Pitches



1,200m Buffer of Public Pitches



1,800m Buffer of Public Pitches

Football

There are 35 public sites and 8 private sites. The distribution of sites is excellent, with only the south part of Bowdon not covered by a public pitch at the 1,800m buffer level. 6 sites are rated as good; St Brides in Old Trafford, Chassen Road in Urmston and four sites concentrated in Sale; Crossford Bridge, Weathercock Farm, Manor Avenue and Cherry Manor School. Unfortunately, the pitches at Cherry Manor School will be lost once the school closes for redevelopment. Pitches rated as adequate are evenly distributed across the borough, however, there is a concentration of poor pitches in the Altrincham and Hale area where there are no good pitches.

The number of junior teams has increased from around 200 to 700 over the last few years and there are 28 registered clubs including 6 girls clubs. This has resulted in more pressure on the use of pitches and consequently their maintenance. More school pitches are being used that are often poorly drained and quality issues are likely to increase in the future.

Issues

- This is excellent coverage across the Borough but an additional facility in the south west of the borough around Bowdon would improve local access. However in terms of quality 5 sites are in need of improving three of which are in the far south of the borough.
- If the trend of increasing popularity within junior teams continues there maybe an issue of not enough pitches and more community use of school pitches needed.

	Sites	No of Pitches
Public	35	127
Private	8	9

Table 15. Split Between Public and Private Football Sites

Pitch ID	Site Name	Senior	Junior	Mini	9v9	Overall Rating
29	St Brides		2			100
35	Weathercock Farm	2				95
13	Crossford Bridge	3	2		2	87

9	Chassen Road	1				85
10	Cherry Manor School		2			83
20	Manor Avenue	2				83
1	Ashton Park	1	1			67
2	Banky Lane	1	1			67
3	Barton Clough	2	2	4		67
4	Beech Avenue	3	3			67
6	Broadoak High	1	1			67
7	Broadway	3				67
8	Cecil Avenue		3			67
12	Cross Lane Recreation Ground	2	4	2		67
15	Flixton Fields	5		4		67
16	Grove Park	2		2		67
18	Highfield Close		1	1		67
19	Lees Field		3	2		67
21	Manor High		1			67
22	Moor Nook Park	1	1			67
24	Nansen Park				1	67
25	Navigation Recreation Ground	1		3		67
27	Salisbury Road	2	2	6		67
28	Seymour Park	1				67
31	Sylvan Avenue	1				67
32	Timperley Recreation Ground	1	1			67
33	Turn Moss	15	1	4	2	67
36	Woodsend Park	1		2	1	67
224	Clarendon Crescent Rec.		2			67
26	Oldfield Brow		1			60
5	Blessed Thomas Holford School	1	1			33
14	Flixton Park	1				33
30	Stamford Park	1				10
34	Walton Park	1				10
17	Hale Croft Park	1				3
	Total	56	35	30	6	

Table 16. Public football sites ordered by their overall rating.

Football

Site Location with Pitch ID

- 1 Public
- 1 Private

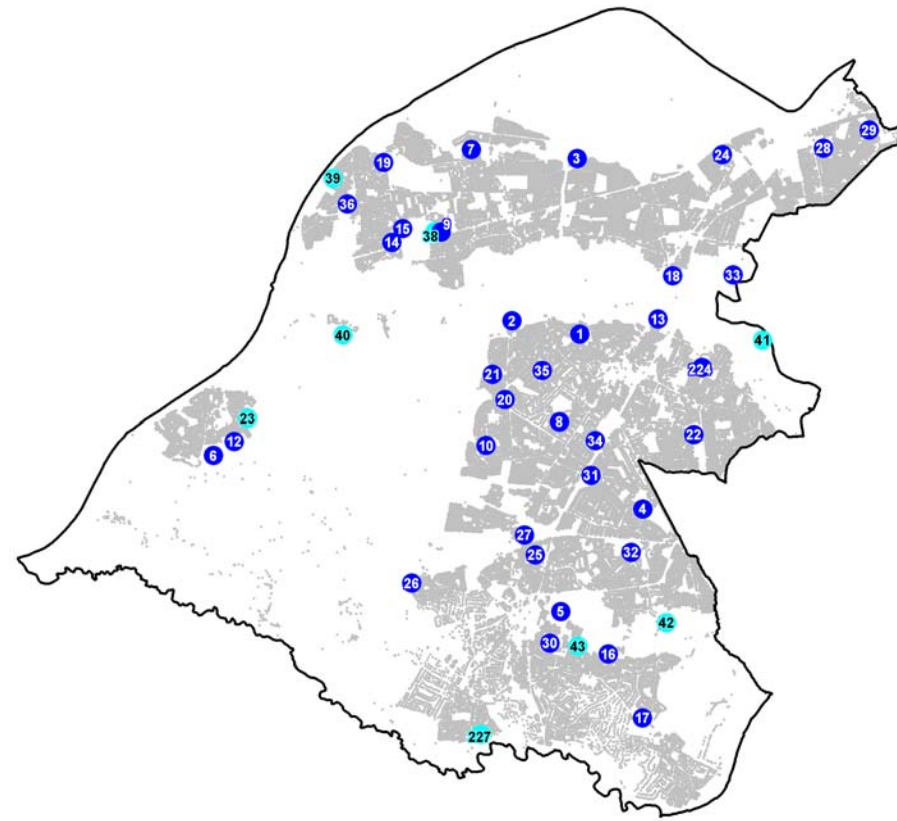
Quality Rating of Public Pitches

- Poor
- Adequate
- Good

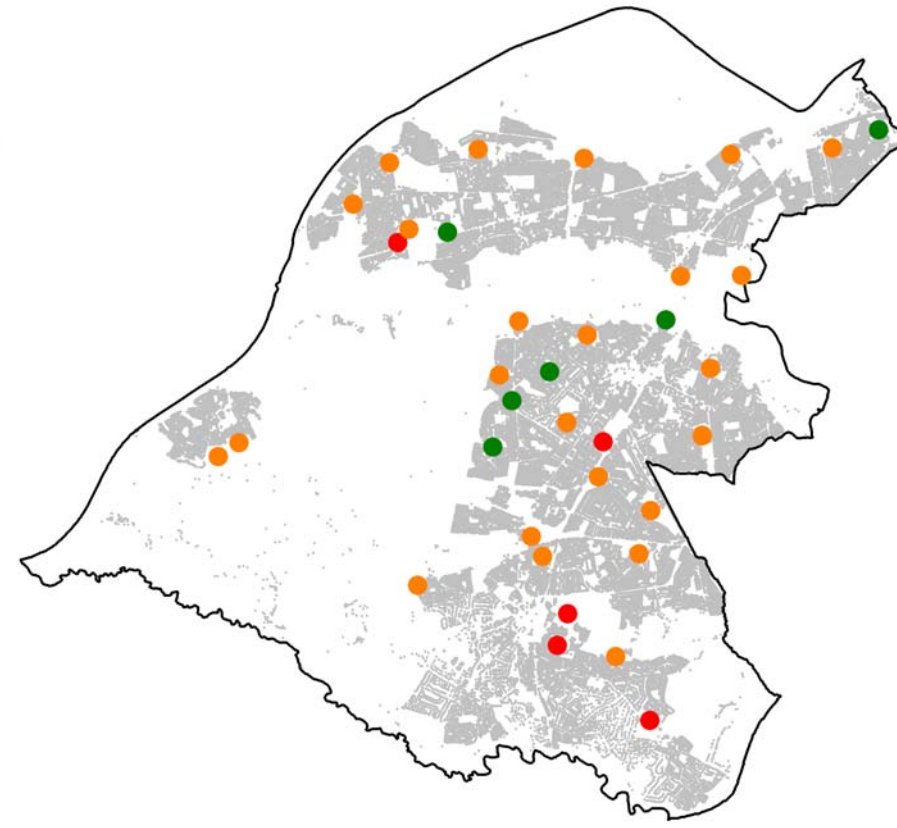
Residential Area

- Property Points (LLPG)

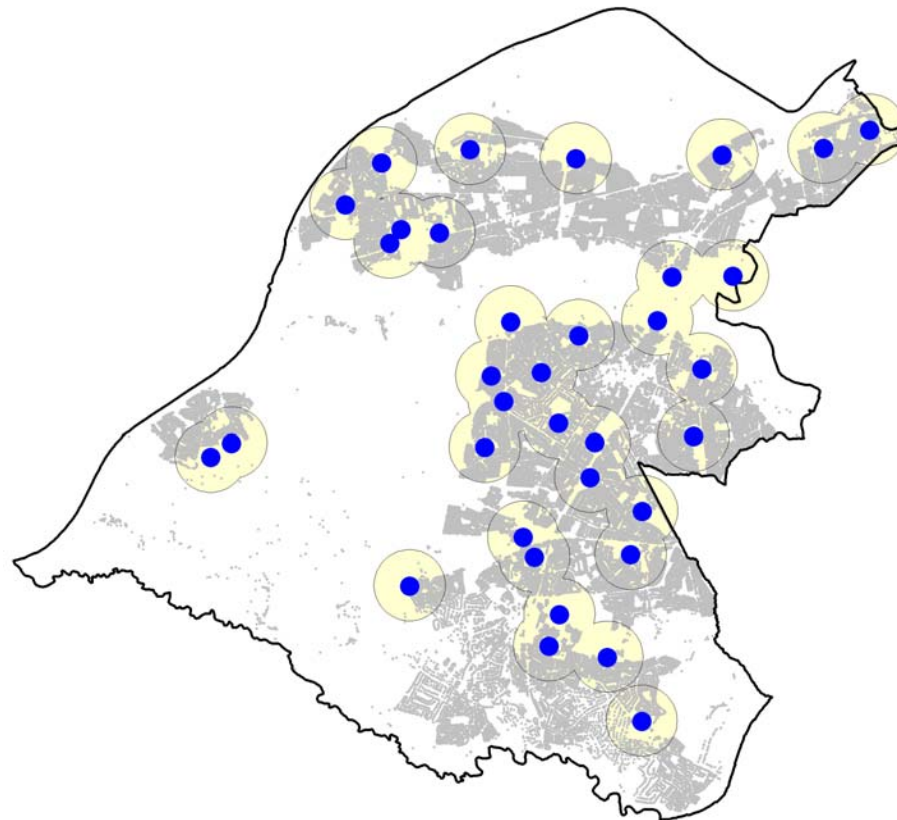
Reproduced from the Ordnance Survey mapping with the permission of the Controller of Her Majesty's Stationery Office © Crown copyright. Unauthorised reproduction infringes Crown copyright and may lead to prosecution or civil proceedings. Trafford Borough Council. OS Licence No. LA076392 20006



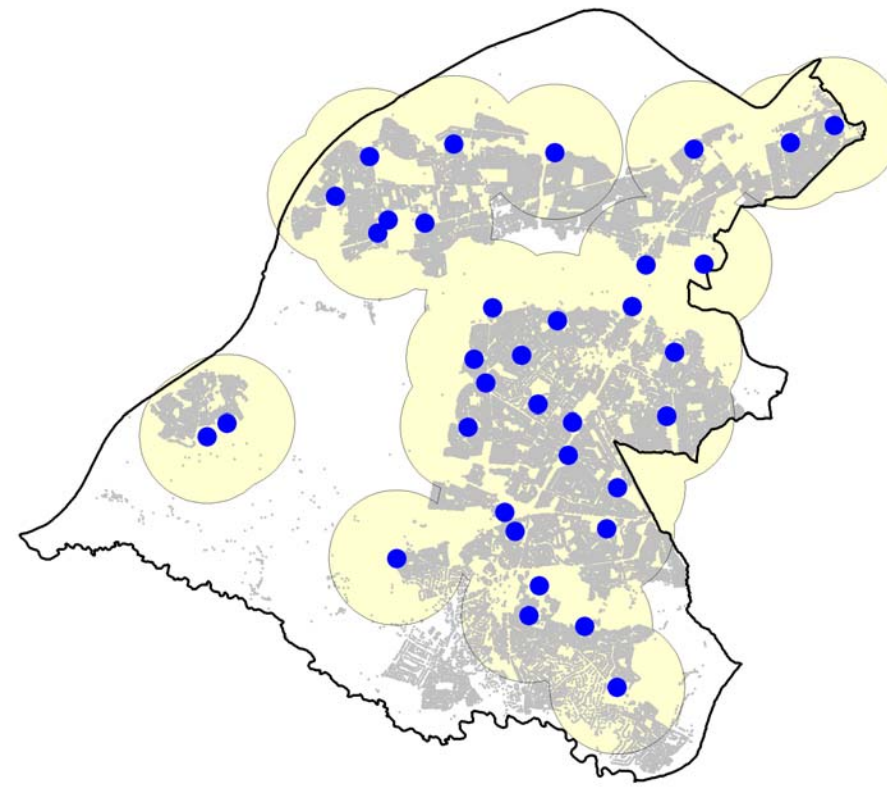
Ownership



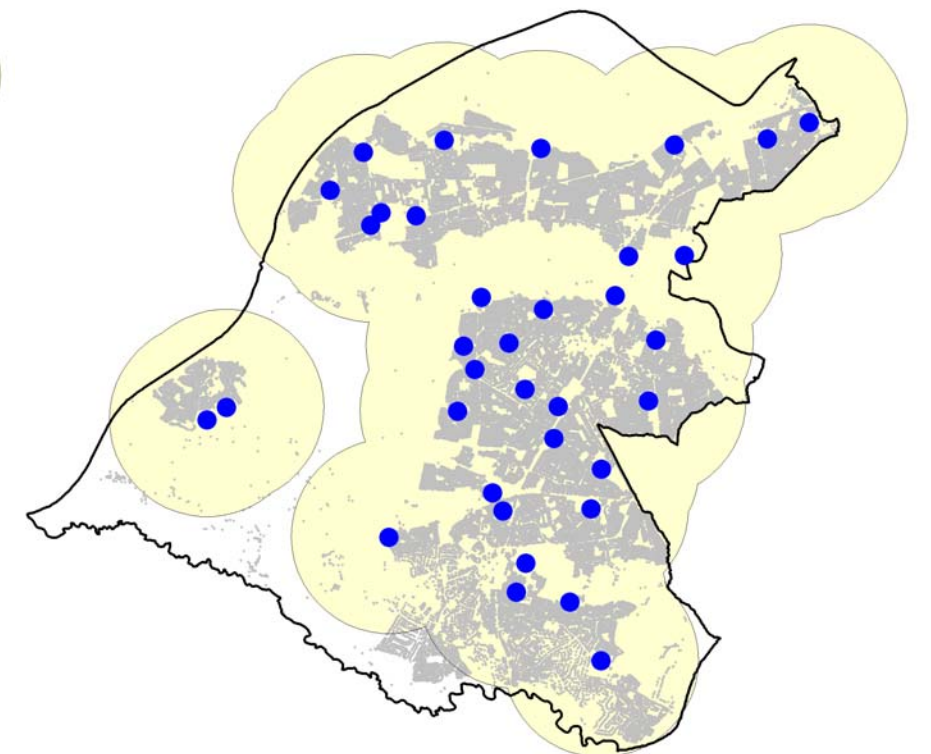
Quality Rating of Public Pitches



600m Buffer of Public Pitches



1,200m Buffer of Public Pitches



1,800m Buffer of Public Pitches

Gaelic

There are three pitches rated as adequate at Turn Moss. It's location near the boundary with Manchester and in the green belt of the Mersey Valley means there are few Trafford residents within its immediate area.

	Sites	No of Pitches
Public	1	2
Private	0	0

Table17. Split Between Public and Private Gaelic Sites

Pitch ID	Site Name	No of Pitches	Overall Rating
44	Turn Moss	3	67

Table 18. Overall rating of the public Gaelic site.

Gaelic

Site Location with Pitch ID

1 Public

1 Private

Quality Rating of Public Pitches

● Poor

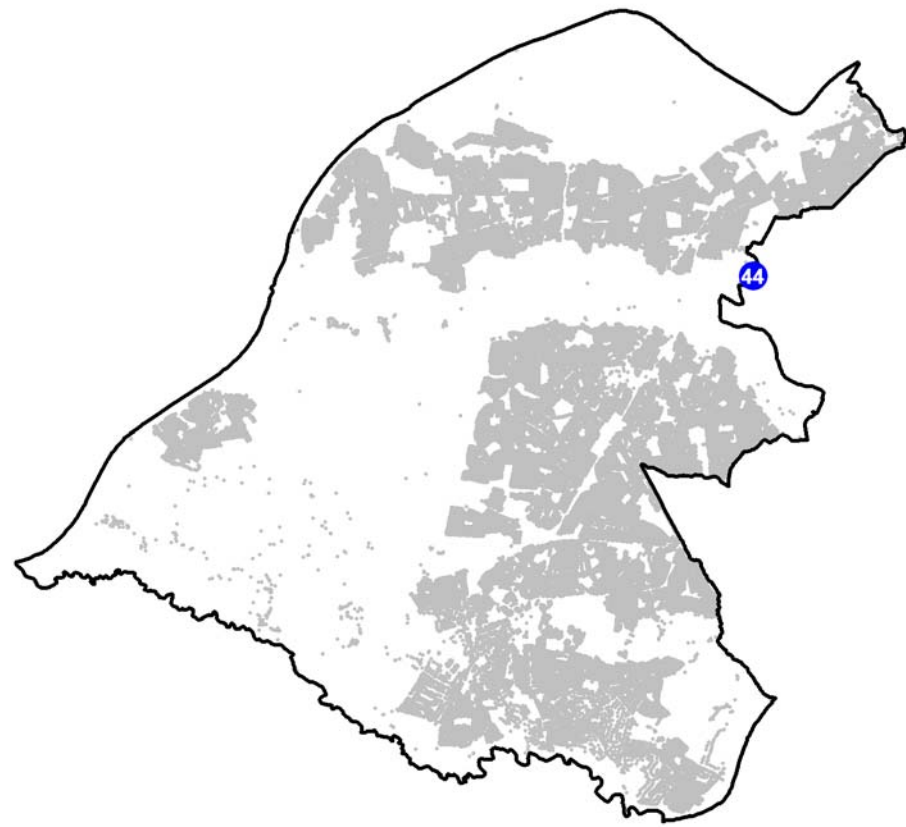
● Adequate

● Good

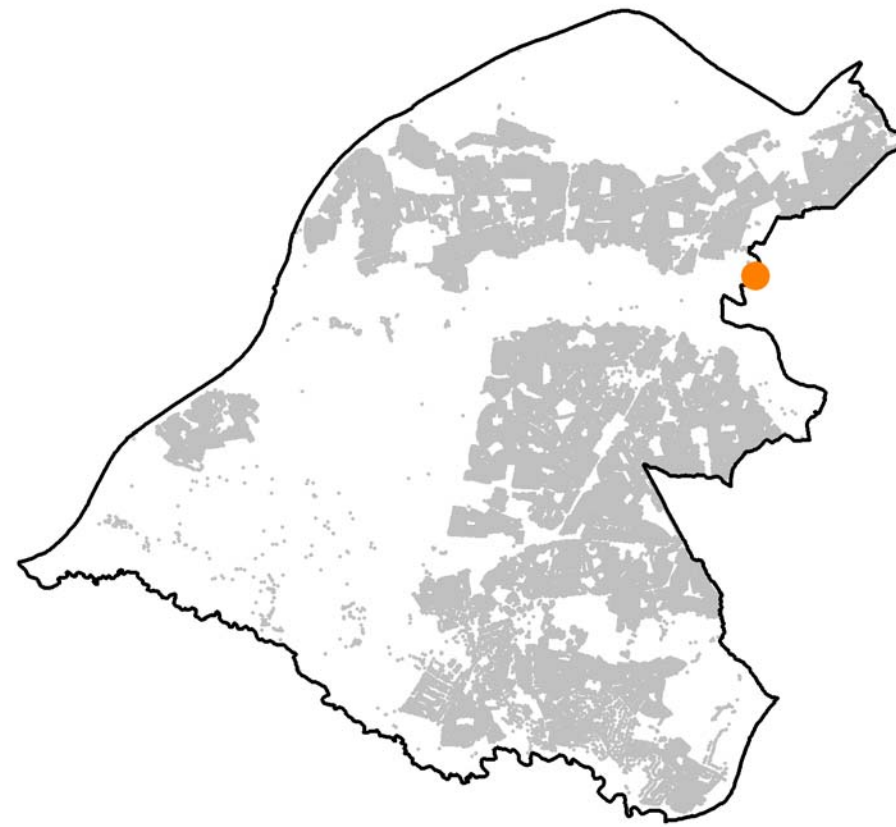
Residential Area

■ Property Points (LLPG)

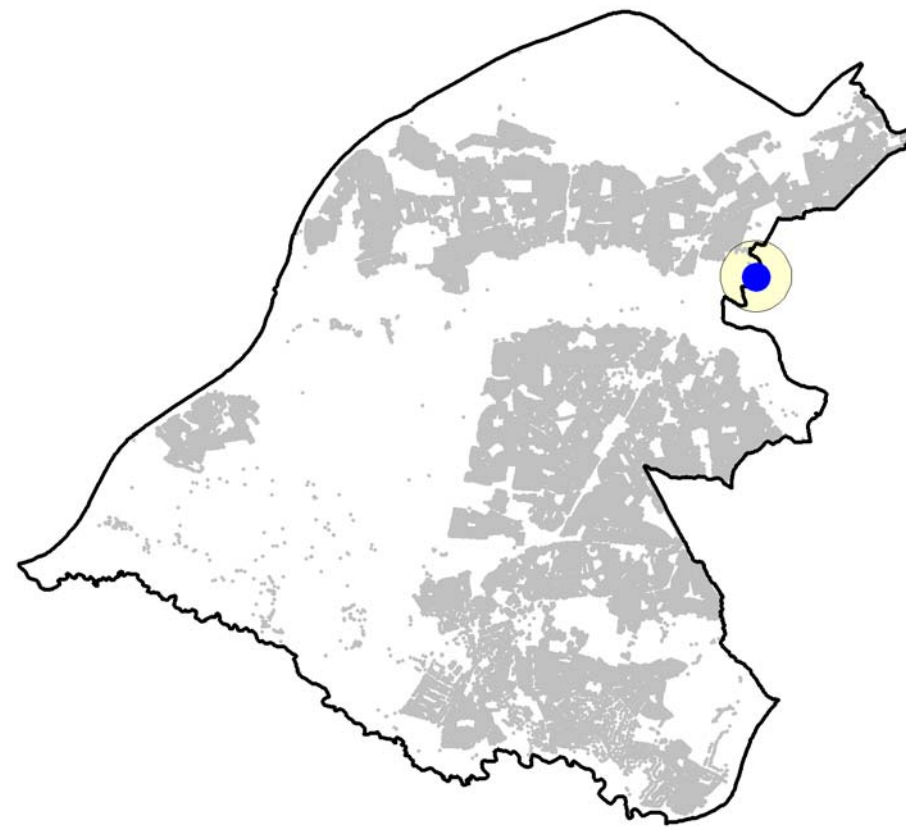
Reproduced from the Ordnance Survey mapping with the permission of the Controller of Her Majesty's Stationery Office © Crown copyright. Unauthorised reproduction infringes Crown copyright and may lead to prosecution or civil proceedings. Trafford Borough Council. OS Licence No. LA076392 20006



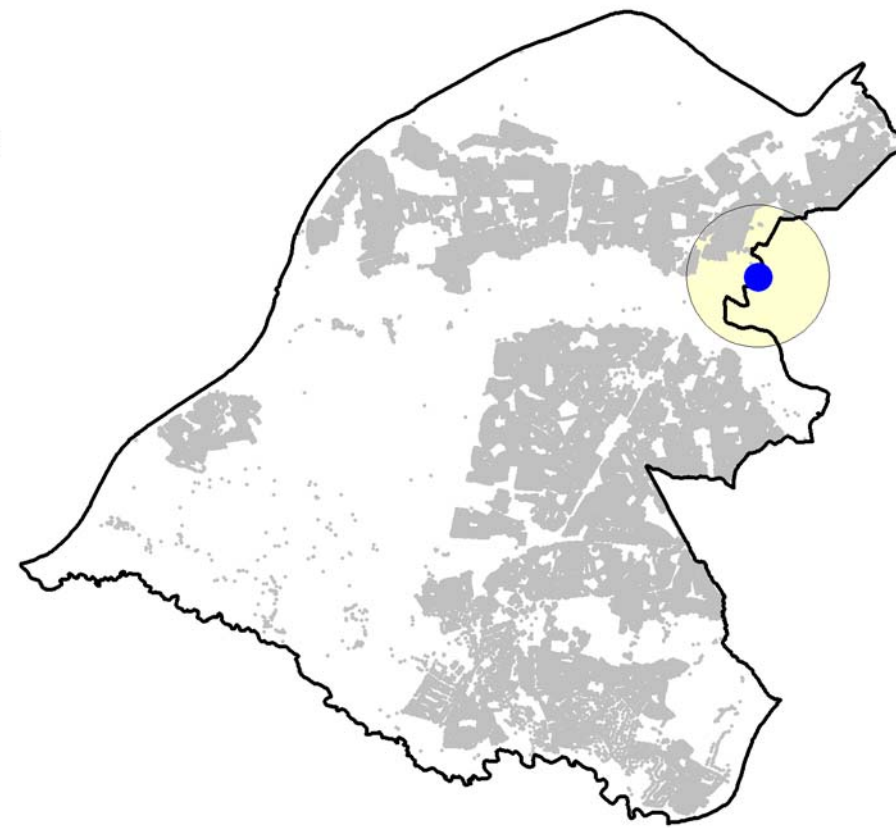
Ownership



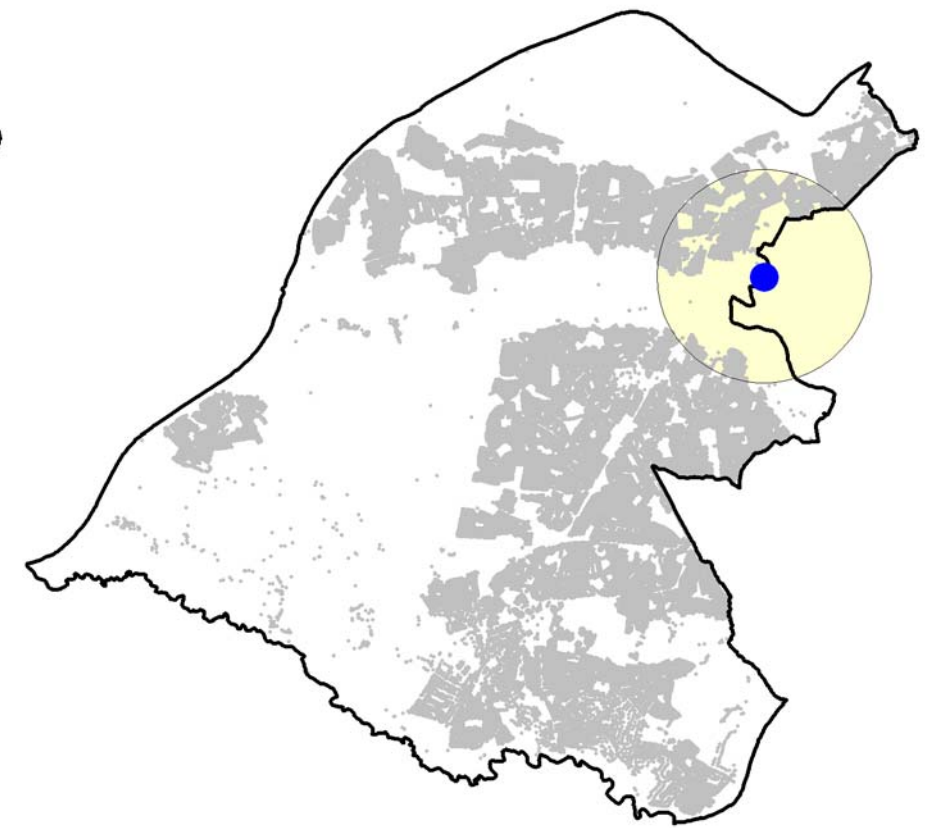
Quality Rating of Public Pitches



600m Buffer of Public Pitches



1,200m Buffer of Public Pitches



1,800m Buffer of Public Pitches

MUGA's

There are 15 locations of public MUGA's in Trafford with 8 rated as good, of which five are concentrated in the Stretford and Old Trafford areas to the north of the borough. Only two locations are rated as poor; Baguley Lane and Broomwood Play Area. Urmston is poorly catered for with one site of adequate quality which is insufficient to cover the whole of this area. To the south of the borough, Bowdon, Hale, Hale Barns and the South of Altrincham all lack access to MUGA's at the 1,800m buffer distance.

	Sites	No of Pitches
Public	15	18
Private	0	0

Table 19. Split Between Public and Private MUGA Sites

Pitch ID	Site Name	Total
217	Tamworth Court	100
211	Sale West Recreation Ground	100
207	Seymour Park	100
206	Nansen Park	100
204	Cross Lane Recreation Ground	100
200	Navigation Recreation Ground	100
205	Gorse Hill Park	98
209	Victoria Park	83
216	Cranford Avenue	67
213	Sale West	67
212	Kelsall Street	67
210	Woodstock Community Park	67
203	Broadway	67
214	Baguley Lane	0
202	Broomwood Play Area	0

Table 20. Public MUGA's ordered by their overall rating.

Issues

- There is a deficiency of facilities in the south of the borough and only 1 facility covering Urmston and Flixton. New facilities in these areas would increase coverage. 2 sites are of poor quality and in need of improvement.

MUGA's

Site Location with Pitch ID

- 1 Public
- 1 Private

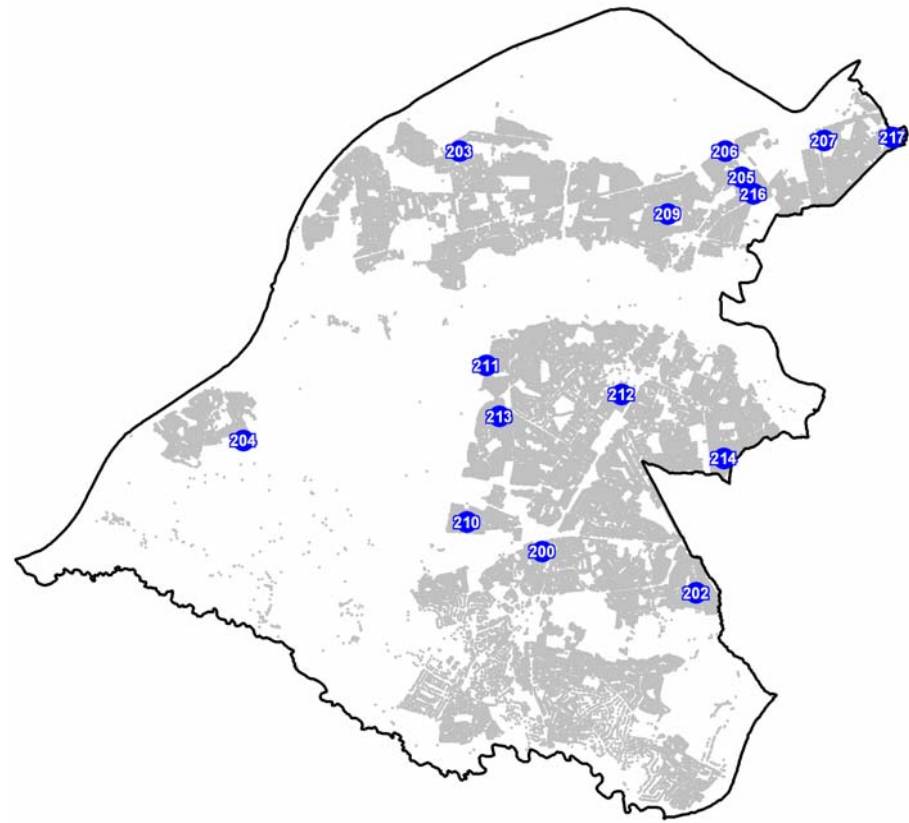
Quality Rating of Public Pitches

- Poor
- Adequate
- Good

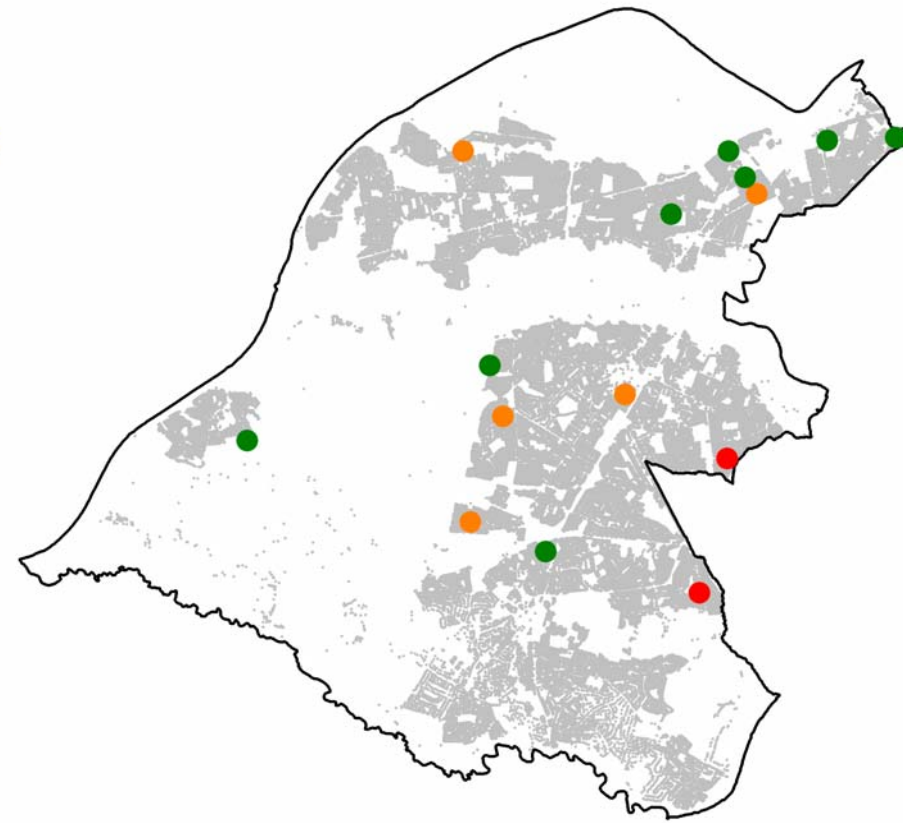
Residential Area

- Property Points (LLPG)

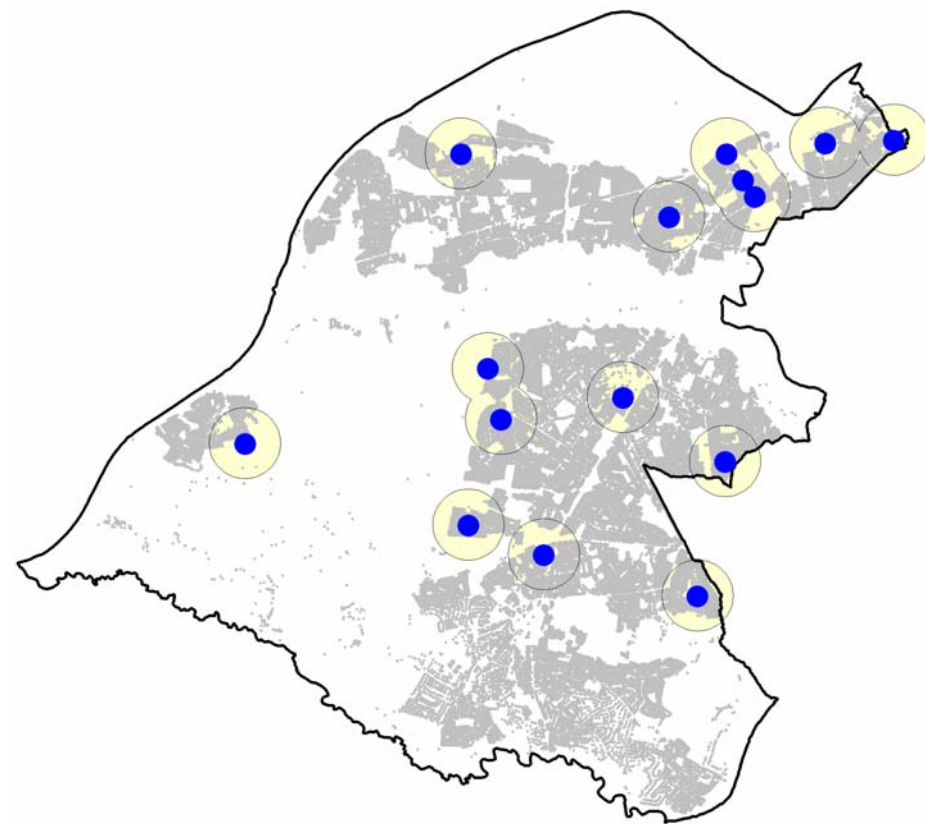
Reproduced from the Ordnance Survey mapping with the permission of the Controller of Her Majesty's Stationery Office © Crown copyright. Unauthorised reproduction infringes Crown copyright and may lead to prosecution or civil proceedings. Trafford Borough Council. OS Licence No. LA076392 20006



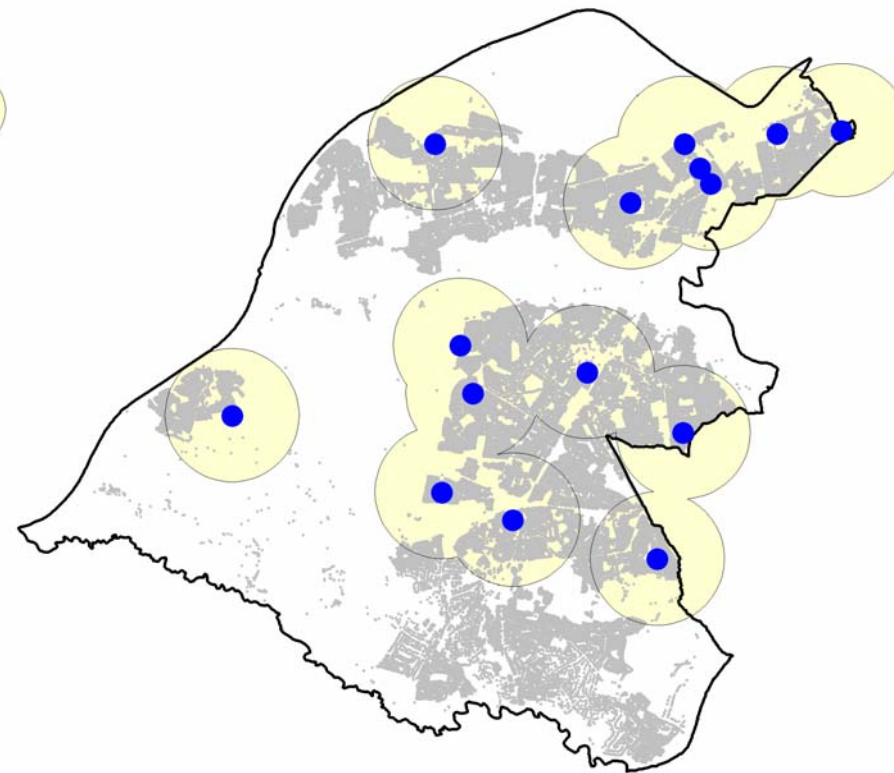
Ownership



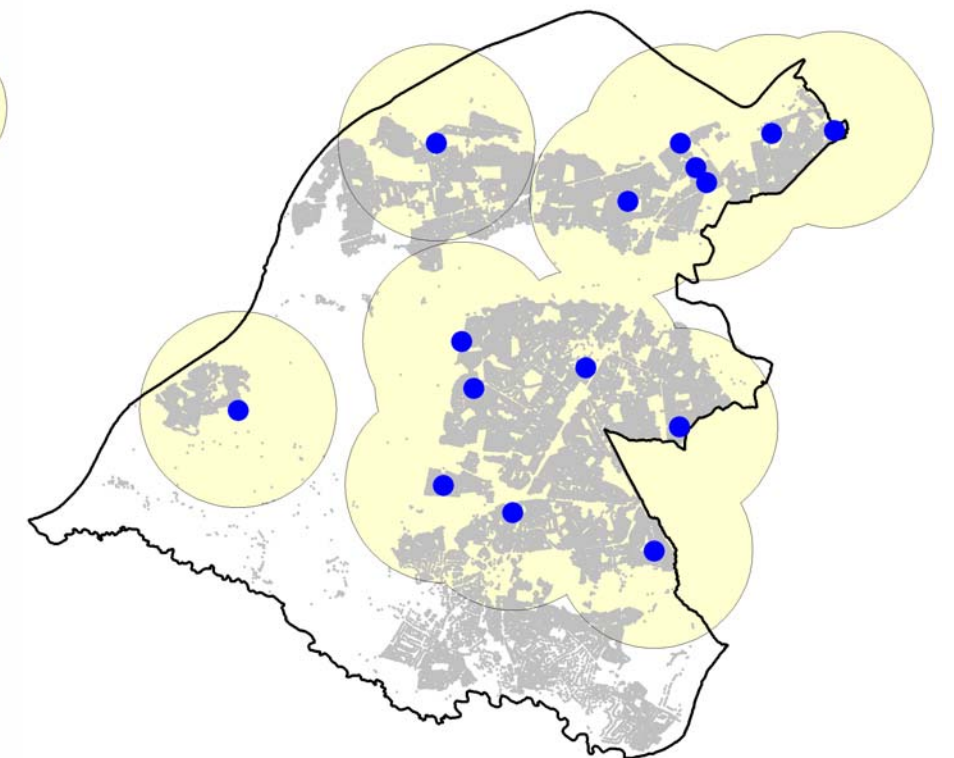
Quality Rating of Public Pitches



600m Buffer of Public Pitches



1,200m Buffer of Public Pitches



1,800m Buffer of Public Pitches

Rugby

There are two public rugby pitches at Clarendon Crescent Recreation Ground with a quality rating of adequate. Consequently the rest of the borough has to rely on private pitches. There are six locations of private pitches; Montell Carrington RUFC, Bowdon RUFC who play in Timperley, Altrincham Kersal RFC in Timperley and three sites in Sale; Ashton on Mersey RUFC, Trafford MV RUFC and Sale RUFC. Concentration of sites in the middle of the borough means the following areas have no local rugby facility: Old Trafford, Stretford, Urmston, Partington, Altrincham, Hale and Bowdon.

There is an increase in the number of clubs with 7 now running junior teams. However at present there is sufficient capacity at the existing sites to provide for this.

	Sites	No of Pitches
Public	1	1
Private	6	14

Table 21. Split Between Public and Private Rugby Sites

Pitch ID	Site Name	No of Pitches	Overall Rating
48	Clarendon Crescent Rec.	2	67

Table 22. Overall rating of the public rugby site.

Issues

- Distribution is poor but there may not be the demand for extra facilities. Private rugby may meet current demand at present but if popularity continues this may need to be reviewed in the future.

Rugby

Site Location with Pitch ID

- 1 Public
- 1 Private

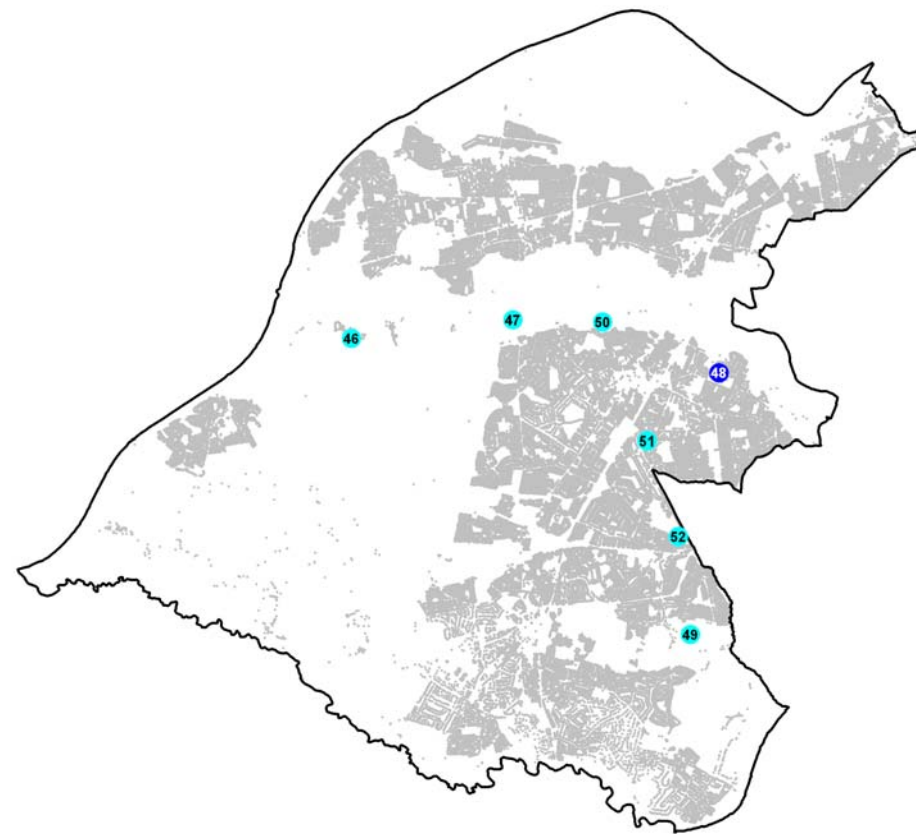
Quality Rating of Public Pitches

- Poor
- Adequate
- Good

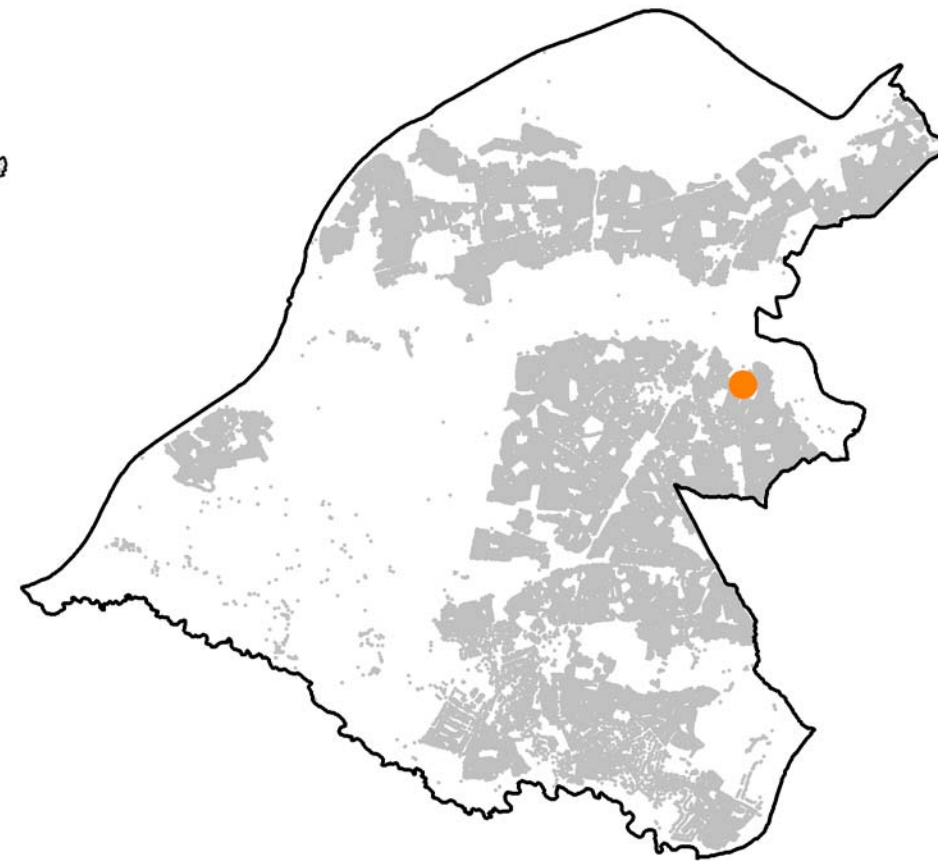
Residential Area

- Property Points (LLPG)

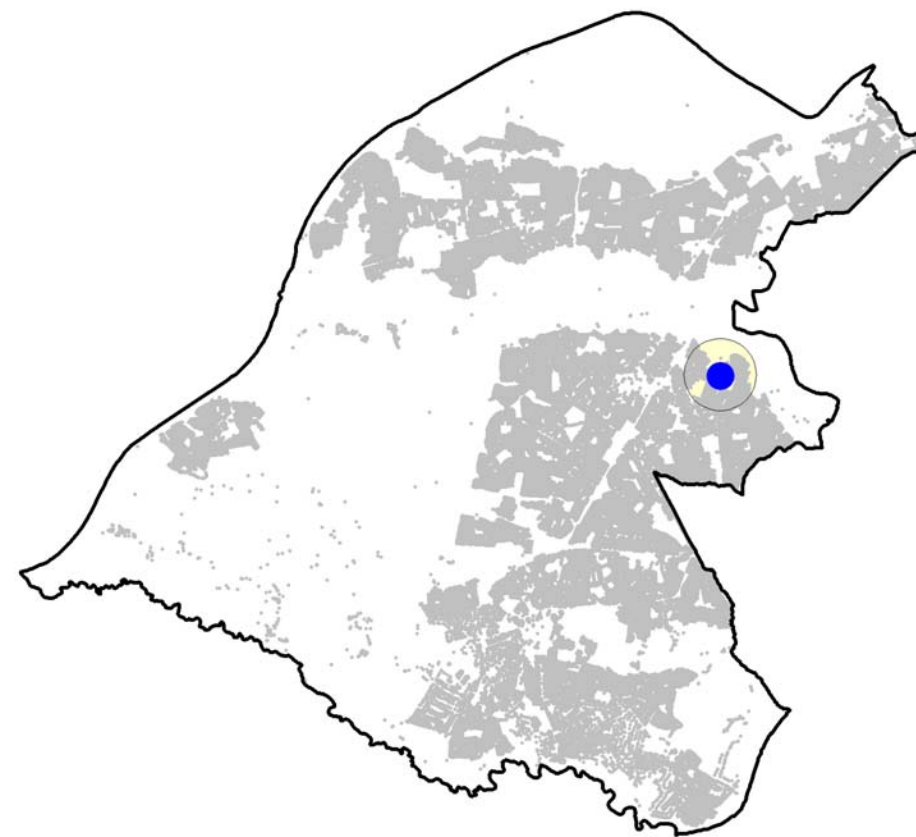
Reproduced from the Ordnance Survey mapping with the permission of the Controller of Her Majesty's Stationery Office © Crown copyright. Unauthorised reproduction infringes Crown copyright and may lead to prosecution or civil proceedings. Trafford Borough Council. OS Licence No. LA076392 20006



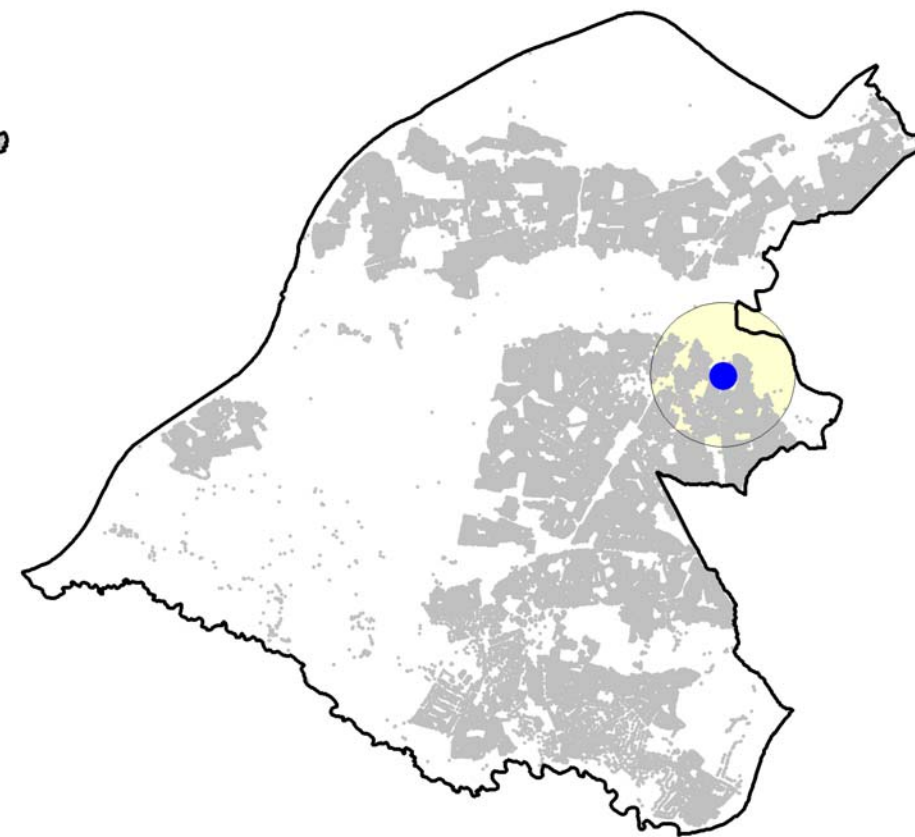
Ownership



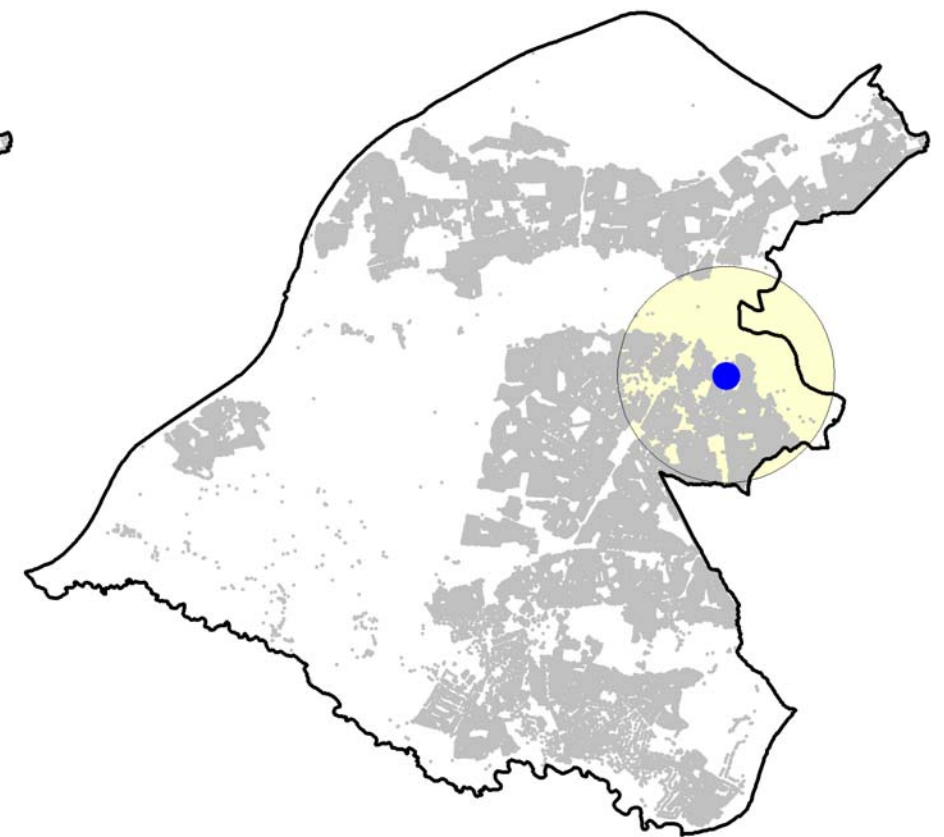
Quality Rating of Public Pitches



600m Buffer of Public Pitches



1,200m Buffer of Public Pitches



1,800m Buffer of Public Pitches

Tennis

The public tennis sites are well distributed with the exception of Partington and Old Trafford which does not have any courts. Those other areas of the borough not covered by public tennis at the 1,800m buffer level are covered by private facilities. This sport is well catered for by the private sector who manage over half of the Boroughs tennis facilities with 13 registered clubs.

Of the private facilities 72% of the courts are felt to be of a good quality. Only one public site is rated as good and three sites with low adequate scores due to the quality of equipment. 6 Sites with 18 courts (41% of public courts) are rated overall as 0, with Broadway described as unplayable and dangerous. The KKP study of 2001 mentioned 11 courts being unplayable due to their poor condition or lack of netting. Therefore there has been a deterioration in quality in recent years.

Issues

There is a fairly good distribution of facilities but there are some very poor locations which need investment. There is a lack of any public provision in Old Trafford and Partington. It is also in these regeneration areas where public provision is most important in encouraging participation.

Without significant investment the future of public tennis facilities in Trafford are under threat. The distribution of facilities may need to be reconsidered in order to make facilities sustainable. Investment in a Tennis Strategy and Tennis Development officer may be a way of taking this forward.

	Sites	No of Courts
Public	14	44
Private	18	111

Table 23. Split Between Public and Private Tennis Sites.

Pitch ID	Site Name	Overall Rating
137	Riddings Road	83
135	Hale Croft Park	67

147	Walton Park	67
148	John Leigh Park	67
154	Longford Park	67
136	Woodsend Park	37
141	Stamford Park	37
146	Davyhulme Park	37
134	Moor Nook Park	0
139	Abbotsfield Park	0
140	Ashton Park	0
142	Pickering Lodge	0
194	Broadway, Laburnum Road	0
196	Victoria Park	0

Table 24. Public tennis sites ordered by their overall rating.

Tennis

Site Location with Pitch ID

- 1 Public
- 1 Private

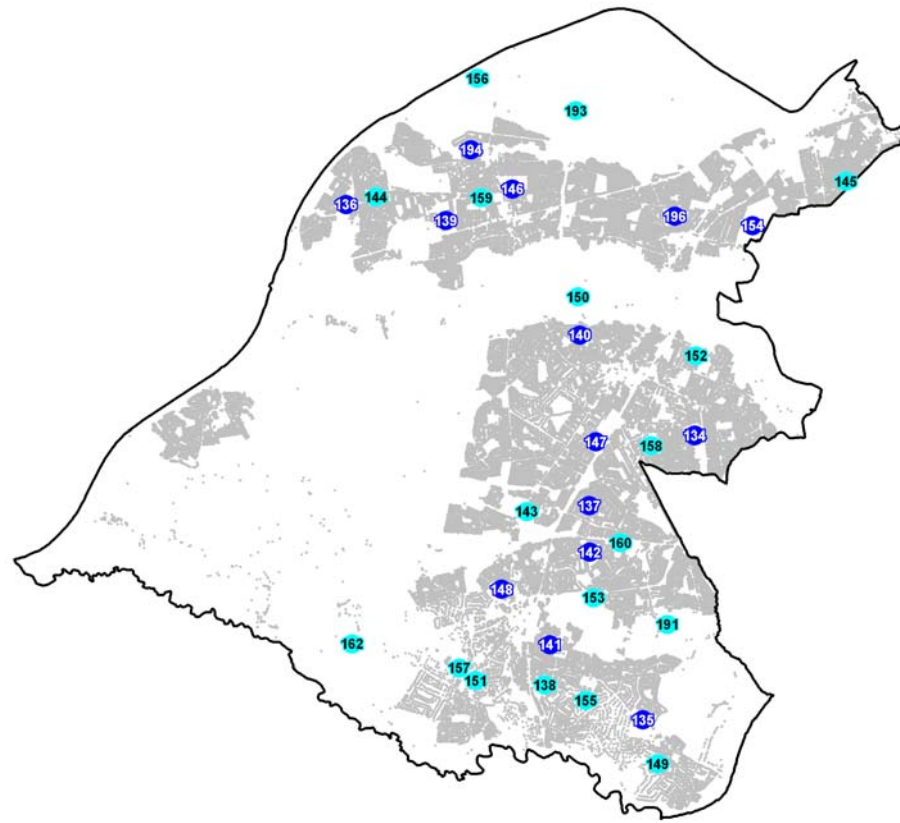
Quality Rating of Public Pitches

- Poor
- Adequate
- Good

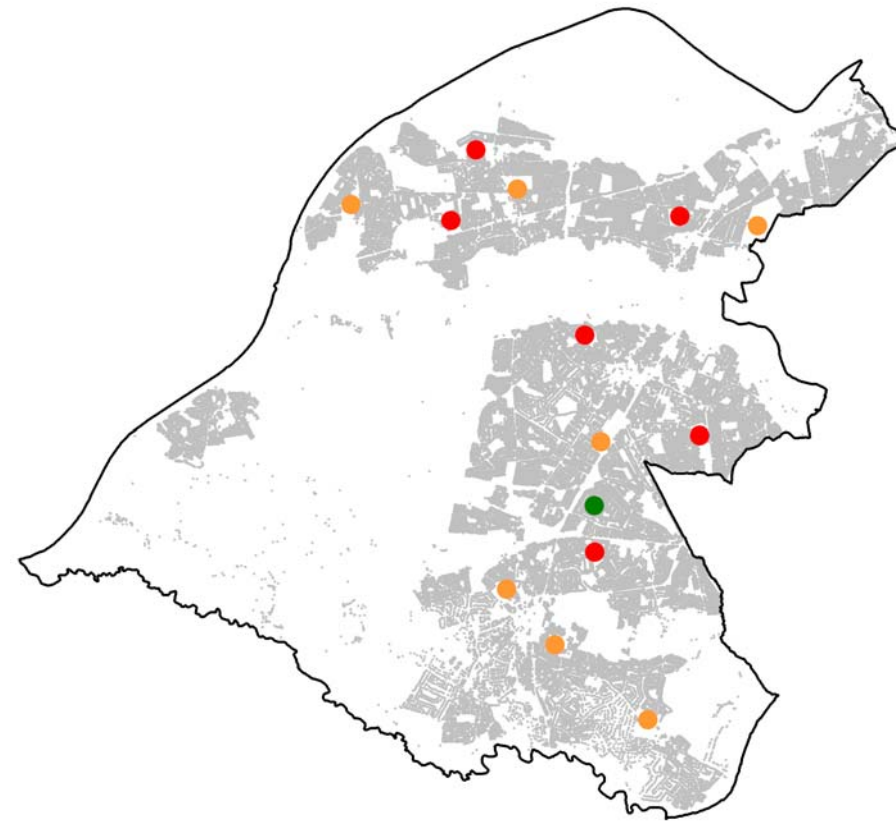
Residential Area

- Property Points (LLPG)

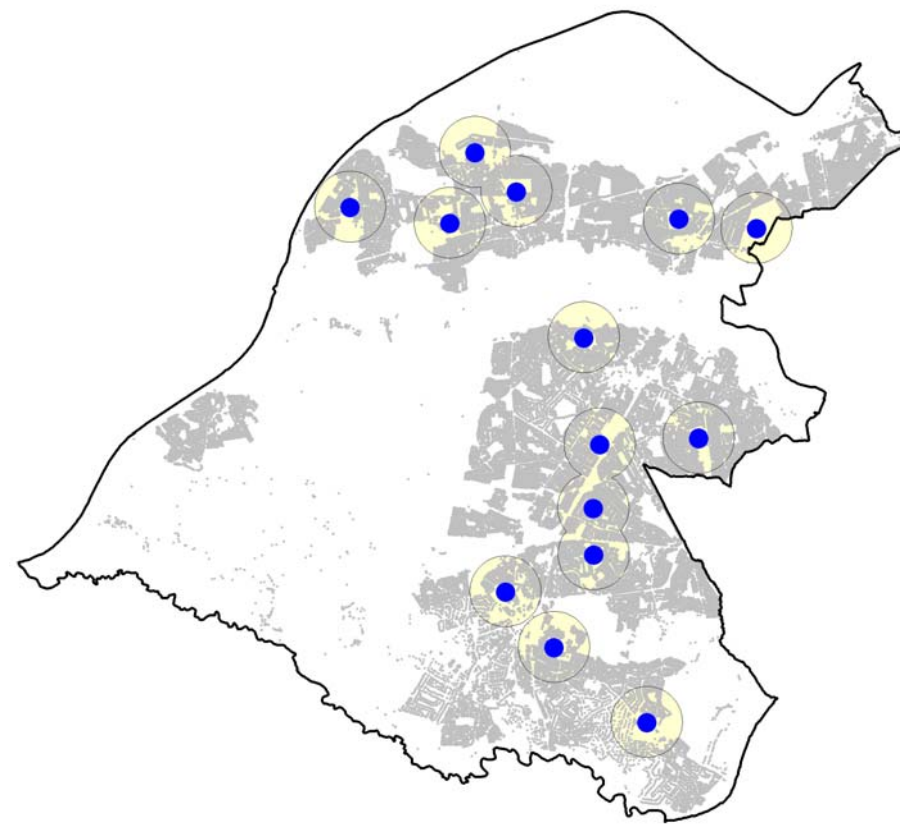
Reproduced from the Ordnance Survey mapping with the permission of the Controller of Her Majesty's Stationery Office © Crown copyright. Unauthorised reproduction infringes Crown copyright and may lead to prosecution or civil proceedings. Trafford Borough Council. OS Licence No. LA076392 20006



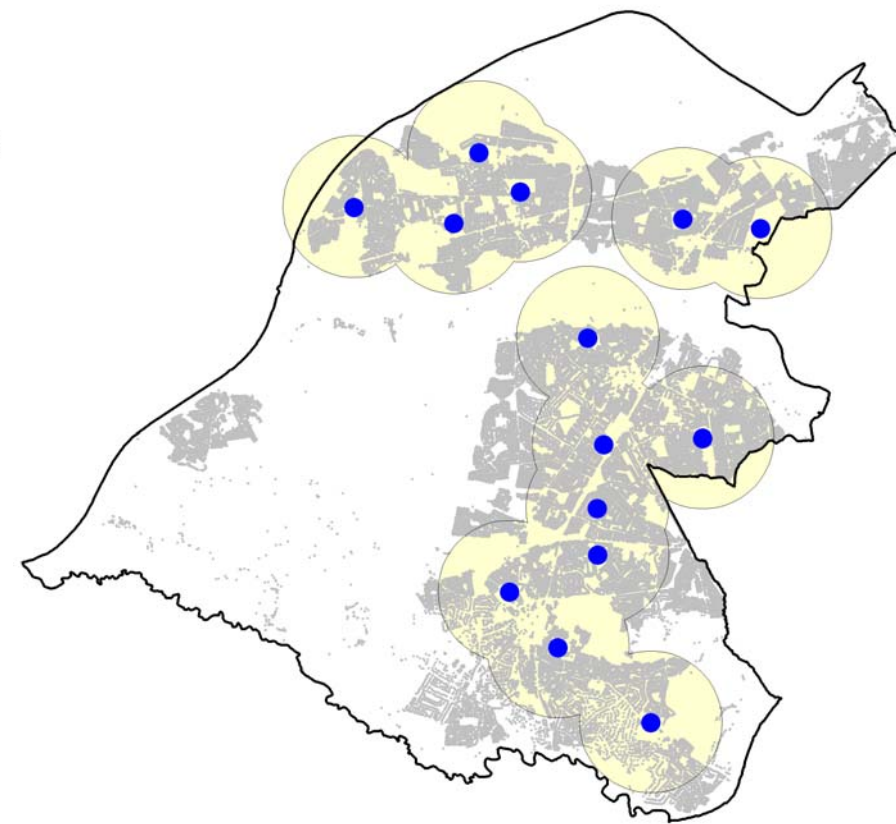
Ownership



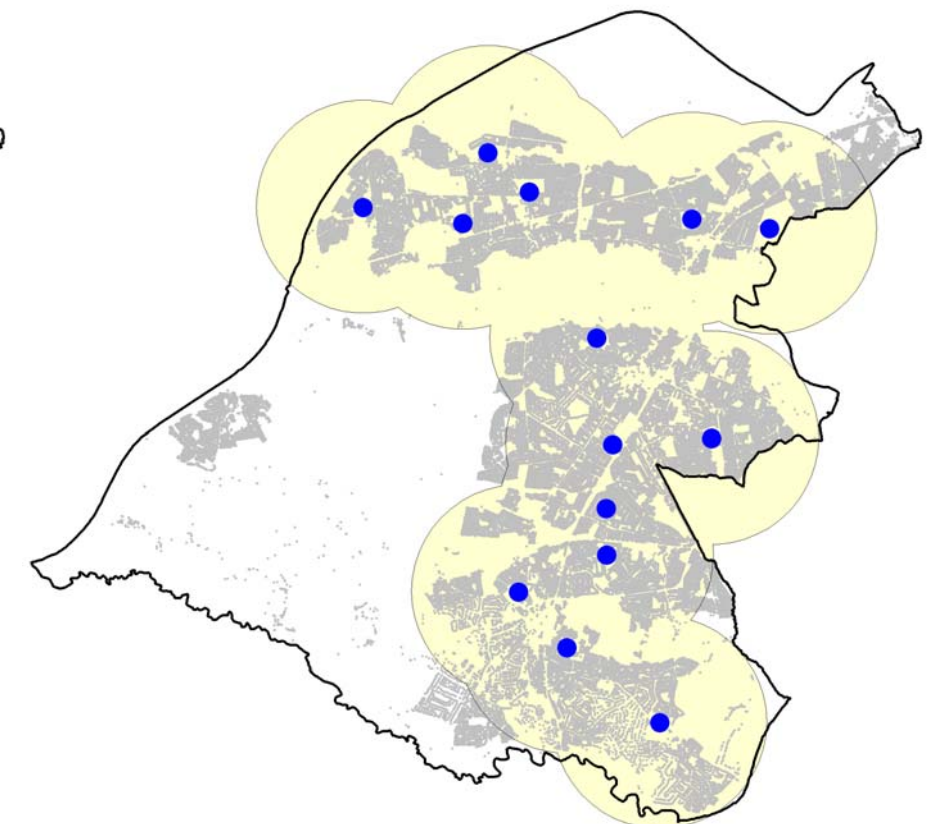
Quality Rating of Public Pitches



600m Buffer of Public Pitches



1,200m Buffer of Public Pitches



1,800m Buffer of Public Pitches

Conclusions

Generally outdoor sports facilities are well distributed across Trafford with particularly high quality facilities for athletics and football in the north of the borough.

There are fewer public facilities for bowls, basketball, tennis, rugby and football in the south of the borough particularly Hale, Hale Barns and Bowdon.

Facilities in Partington, Sale West and some areas in the south of the borough are generally of a lower quality.

The main issues affecting the quality of facilities are high levels of vandalism on many sites particularly tennis.

In terms of facilities that are needed and not adequately catered for changing facilities are needed on many sites. This could be further clarified by the need particularly for segregated changing to cater for the growth in girls football.

Provision for public tennis facilities is particularly poor and a more strategic approach to improvements is needed in terms of participation and distribution of facilities to meet future needs.

To improve the quality of changing facilities improvements to shower facilities are identified on several sites.

Appendix A - List of sites by Site ID

Site ID	Site Name	Street	Town	Pitch ID	Sport
2	Ashton Park	Glebelands Road	Sale	1	football
				88	bowls
				140	tennis
				169	basketball
3	Banky Lane	Banky Lane	Sale	2	football
4	Barton Clough	Old Hall Road	Urmston	3	football
5	Beech Avenue	Beech Avenue	Timperley	4	football
6	Blessed Thomas Holford School	Urban Road	Altrincham	5	football
				222	all weather
7	Broadoak High	Warburton Lane	Partington	6	football
				80	all weather
8	Broadway	Broadway	Davyhulme	7	football
				190	bowls
				194	tennis
				203	MUGA
9	MUFC Carrington Training Ground	Birch Road	Carrington	69	all weather
10	Cecil Avenue	Cecil Avenue	Sale	8	football
11	Chassen Road	Chassen Road	Flixton	9	football
12	Cherry Manor School	Cherry Street	Sale	10	football
13	Sale Cricket & Tennis Club	Clarendon Crescent	Sale	54	cricket
				152	tennis
14	Cross Lane Recreation Ground	Cross Lane East	Partington	12	football
				89	bowls
				204	MUGA
15	Crossford Bridge	Danefield Road	Sale	13	football
				56	cricket
				83	athletics
16	Flixton Park	Flixton Road	Flixton	14	football
17	Flixton Girls High School	Flixton Road	Flixton	70	all weather
18	Flixton Fields	Flixton Road	Flixton	15	football
19	Grove Park	Grove Lane	Altrincham	16	football
20	Hale Croft Park	Hale Road	Halebarns	17	football
				135	tennis
21	Highfield Close	Highfield Close	Stretford	18	football
22	Lees Field	Davyhulme Road	Calder Bank	19	football
23	Manor Avenue	Manor Avenue	Sale	20	football
24	Manor High	Manor Avenue	Sale	21	football
25	Moor Nook Park	Norris Road	Sale	22	football
				98	bowls
				134	tennis

				168	basketball
26	Moss View	Moss View Road	Partington	23	football
27	Nansen Park	Nansen Close	Gorse Hill	24	football
				206	MUGA
28	Navigation Recreation Ground	Navigation Road	Broadheath	25	football
				99	bowls
				200	MUGA
				228	basketball
29	Oldfield Brow	Stokoe Avenue	Altrincham	26	football
Site ID	Site Name	Street	Town	Pitch ID	Sport
30	Salisbury Road	Salisbury Road	Broadheath	27	football
31	Seymour Park	Northumberland Rd	Old Trafford	28	football
				71	all weather
				207	MUGA
32	St Brides	St Brides Way	Old Trafford	29	football
				223	cricket
33	Stamford Park	Moss Lane	Altrincham	30	football
				103	bowls
				141	tennis
				170	basketball
34	Sylvan Avenue	Sylvan Avenue	Brooklands	31	football
35	Timperley Recreation Ground	Grove Lane	Timperley	32	football
				85	athletics
36	Turn Moss	Turn Moss Lane	Stretford	33	football
				44	Gaelic
37	Urmston Grammar School	Roseneath Road	Urmston	72	all weather
38	Walton Park	Walton Road	Sale	34	football
				105	bowls
				147	tennis
39	Weathercock Farm	Harborough Road	Sale	35	football
40	Wellacre High School	Irlam Road	Flixton	73	all weather
41	Woodheys School	Meadway	Sale	74	all weather
42	Woodsend Park	Woodsend Crescent	Flixton	36	football
				136	tennis
				164	basketball
43	Abbotsfield Park	Chassen Road	Flixton	86	bowls
				139	tennis
44	Altrincham Grammar School for Girls	The Firs	Altrincham	75	all weather
45	Ashley Road	Ashley Road	Hale	87	bowls
46	Ashton on Mersey RUFC	Banky Lane	Sale	47	rugby
47	Hale Barns Cricket Club	Chapel Lane	Halebarns	60	cricket
48	Hale Barns Tennis Club	Chapel Lane	Hale	149	tennis

49	Claremont Tennis Club	Claremont Drive	Broadheath	143	tennis
50	Clarendon Crescent Recreation Ground	Clarendon Crescent	Sale	48	rugby
				224	football
51	Bowdon RUFC	Clay Lane	Altrincham	49	rugby
52	Davyhulme Park	Canterbury Road	Davyhulme	90	bowls
				146	tennis
				174	basketball
53	Bowdon Lawn Tennis Club	Woodhouse Lane	Altrincham	157	tennis
54	Trafford MV	Little Ees Lane	Sale	50	rugby
				67	cricket
55	Golden Hill Park	Park Road	Davyhulme	91	bowls
56	Hale Road	Hale Road	Hale	92	bowls
57	Sale RUFC	Heywood Road	Sale	51	rugby
58	Hullard Park	Northumberland Road	Old Trafford	93	bowls
59	Humphrey Park	Humphrey Lane	Urmston	94	bowls

Site ID	Site Name	Street	Town	Pitch ID	Sport
60	John Leigh Park	Oldfield Road	Altrincham	95	bowls
				148	tennis
				172	basketball
61	Altrincham Kersal RFC	Kersal Drive	Timperley	52	rugby
62	Flixton Cricket & Sports Club	Lawrence Road	Flixton	61	cricket
				109	bowls
				144	tennis
63	Hale Village Tennis Club	Leigh Road	Hale	138	tennis
64	Stretford Cricket Club	Lesley Road	Stretford	62	cricket
65	Ashton on Mersey Cricket and Tennis Club	Little Ees Lane	Sale	63	cricket
				150	tennis
66	Longford Park	Edge Lane	Stretford	84	athletics
				96	bowls
				154	tennis
				167	basketball
67	Lostock Park	Old Hall Road	Urmston	97	bowls
69	South Trafford College	Manchester Road	Broadheath	76	all weather
70	Urmston Cricket and Lawn Tennis Club	Moorside Road	Davyhulme	64	cricket
				108	bowls
				159	tennis
71	Hale Lawn Tennis Club	Hale Road	Hale	155	tennis
72	Heyes Grove Tennis Club	Stoney Bridge Lane	Timperley	160	tennis
73	Pickering Lodge	Grove Lane	Timperley	100	bowls
				142	tennis
				171	basketball

74	Priory Street	Priory Street	Altrincham	65	cricket
				101	bowls
75	Riddings Road	Riddings Road	Timperley	102	bowls
76	Bowdon Cricket, Hockey and Squash Club	South Downs Road	Altrincham	55	cricket
				77	all weather
78	Sale Moor Cricket Club	Sunningdale Avenue	Sale	66	cricket
79	Victoria Park	Victoria Road	Stretford	104	bowls
				196	tennis
				208	basketball
				209	MUGA
80	Brooklands Sports Club	Whitehall Road	Sale	59	cricket
				79	all weather
				117	bowls
				158	tennis
81	Bowdon Bowling and lawn Tennis Club	Ashley Road	Altrincham	106	bowls
				151	tennis
82	Darley Lawn Tennis Club	Wood Road North	Darley Park	145	tennis
83	Woodhouse Lane	Woodhouse Lane	Dunham Town	162	tennis
84	Worthington Park	Broad Road	Sale	107	bowls
85	Timperley Sports Club	Stockport Road	Timperley	58	cricket
				78	all weather
				153	tennis
Site ID	Site Name	Street	Town	Pitch ID	Sport
86	Shell Carrington	Manchester Road	Carrington	40	football
				46	rugby
87	David Lloyd Leisure Club	Trafford Way	Trafford Park	156	tennis
88	Riddings Road	Riddings Road	Timperley	137	tennis
89	Flixton Conservative Club	Flixton Road	Flixton	110	bowls
90	Railway Club (LMRCA)	Station Road	Urmston	111	bowls
91	Roebuck Bowls Club	Church Road	Flixton	112	bowls
92	Urmston Liberals Bowls Club	Higher Road	Urmston	113	bowls
93	Flixton Ex-servicemen Club	Flixton Road	Flixton	114	bowls
94	Cornhill Road Bowling Green	Cornhill Road	Davyhulme	115	bowls
95	Old Trafford Bowling Club	Talbot Road	Old Trafford	116	bowls
96	Legh Arms Public House	Northernden Road	Sale	118	bowls
97	Sale Conservative Club	Dane Road	Sale	119	bowls
98	Sale Excelsior WMC	Kelsall Street	Sale	120	bowls
99	Trinity Bowls Club	Temple Road	Sale	121	bowls
100	Weldon Road Bowling	Weldon Road	Broadheath	122	bowls

	Green				
101	ASE Club	Dunham Road	Altrincham	123	bowls
102	Altrincham Borough Bowls Club	Willow Tree Road	Altrincham	124	bowls
103	Quarry Bank Hotel	Bloomsbury Lane	Timperley	125	bowls
104	Albert Place Bowling Club	Albert Place	Altrincham	126	bowls
107	Thorley Lane	Thorley Lane	Timperley	130	bowls
108	Langham Grove	Langham Grove	Timperley	131	bowls
111	Trafford FC	Shawe View	Flixton	38	football
112	Flixton FC	Valley Road	Flixton	39	football
113	Jackson's Boat	Rifle Road	Sale	41	football
114	British Airways Sports Ground	Clay Lane	Altrincham	42	football
				191	tennis
				198	bowls
115	Altrincham FC	Moss Lane	Altrincham	43	football
117	Partington Leisure Centre	Chapel Lane	Partington	163	basketball
118	Oak Road Car Park	Oak Road	Partington	165	basketball
119	Old Trafford Youth Centre	Seymour Park	Old Trafford	166	basketball
124	United Service Club	Southern Road	Sale	185	bowls
125	Bulls Head Public House	Hale Road	Hale	186	bowls
126	Hare and Hounds Public House	Stockport Road	Timperley	187	bowls
127	Linden Avenue Bowling Club	Linden Avenue	Sale	188	bowls
128	Navigation Road	Navigation Road	Broadheath	189	bowls
130	Gorse Hill Park	Talbot Road	Gorse Hill	205	MUGA
131	Mercury Way	Mercury Way	Trafford Park	193	tennis
134	Downs Bowling Club	Railway Street	Altrincham	197	bowls
135	Broomwood Play Area	Mainwood Road	Altrincham	201	basketball
				202	MUGA
136	Woodstock Community Park	Whitlow Avenue	Broadheath	210	MUGA
137	Sale West Recreation Ground	Hornbeam Close	Sale	211	MUGA
138	Kelsall Street	Kelsall Street	Sale	212	MUGA
139	Sale West	Ascot Avenue	Sale	213	MUGA
140	Baguley Lane	Off Frodsham Road	Sale Moor	214	MUGA
142	Cranford Avenue	Cranford Avenue	Stretford	216	MUGA
143	Tamworth Court	Chorlton Road	Old Trafford	217	MUGA
150	Bailey Walk	Bailey Walk	Altrincham	227	football
151	Masonic Hall	Westbourne Road	Urmston	229	bowls
Site ID	Site Name	Street	Town	Pitch ID	Sport
152	Mersey Valley Sports Club	Banky Lane	Sale	230	bowls
153	Bay Malton Hotel	Seamons Road	Altrincham	231	bowls

154	Denzel House	Dunham Road	Altrincham	232	bowls
155	Rear of Metrolink Station	Navigation Road	Timperley	233	bowls
156	Timperley Methodist Church	Stockport Road	Timperley	234	bowls
157	Stonemason's Arms	Stockport Road	Timperley	235	bowls

Appendix B - List of pitches by Pitch ID

Pitch ID	Site ID	Sport	Site Name	No of Pitches
1	2	football	Ashton Park	2
2	3	football	Banky Lane	2
3	4	football	Barton Clough	8
4	5	football	Beech Avenue	6
5	6	football	Blessed Thomas Holford School	2
6	7	football	Broadoak High	2
7	8	football	Broadway	3
8	10	football	Cecil Avenue	3
9	11	football	Chassen Road	1
10	12	football	Cherry Manor School	2
12	14	football	Cross Lane Recreation Ground	8
13	15	football	Crossford Bridge	7
14	16	football	Flixton Park	1
15	18	football	Flixton Fields	9
16	19	football	Grove Park	4
17	20	football	Hale Croft Park	1
18	21	football	Highfield Close	2
19	22	football	Lees Field	5
20	23	football	Manor Avenue	2
21	24	football	Manor High	1
22	25	football	Moor Nook Park	2
23	26	football	Moss View	1
24	27	football	Nansen Park	1
25	28	football	Navigation Recreation Ground	4
26	29	football	Oldfield Brow	1
27	30	football	Salisbury Road	10
28	31	football	Seymour Park	1
29	32	football	St Brides	2
30	33	football	Stamford Park	1
31	34	football	Sylvan Avenue	1
32	35	football	Timperley Recreation Ground	2
33	36	football	Turn Moss	22
34	38	football	Walton Park	1
35	39	football	Weathercock Farm	2
36	42	football	Woodsend Park	4
38	111	football	Trafford FC	1
39	112	football	Flixton FC	1
40	86	football	Shell Carrington	2
41	113	football	Jackson's Boat	1
42	114	football	British Airways Sports Ground	1
43	115	football	Altrincham FC	1
44	36	Gaelic	Turn Moss	2
46	86	rugby	Shell Carrington	1
47	46	rugby	Ashton on Mersey RUFC	2

Pitch ID	Site ID	Sport	Site Name	No of Pitches
48	50	rugby	Clarendon Crescent Recreation Ground	1
49	51	rugby	Bowdon RUFC	4
50	54	rugby	Trafford MV	3
51	57	rugby	Sale RUFC	1
52	61	rugby	Altrincham Kersal RFC	3
54	13	cricket	Sale Cricket & Tennis Club	1
55	76	cricket	Bowdon Cricket, Hockey and Squash Club	1
56	15	cricket	Crossford Bridge	1
58	85	cricket	Timperley Sports Club	2
59	80	cricket	Brooklands Sports Club	2
60	47	cricket	Hale Barns Cricket Club	1
61	62	cricket	Flixton Cricket & Sports Club	1
62	64	cricket	Stretford Cricket Club	1
63	65	cricket	Ashton on Mersey Cricket and Tennis Club	1
64	70	cricket	Urmston Cricket and Lawn Tennis Club	1
65	74	cricket	Priory Street	1
66	78	cricket	Sale Moor Cricket Club	1
67	54	cricket	Trafford MV	1
68	1	all weather	Altrincham Grammar School for Boys	1
69	9	all weather	MUFC Carrington Training Ground	1
70	17	all weather	Flixton Girls High School	1
71	31	all weather	Seymour Park	1
72	37	all weather	Urmston Grammar School	1
73	40	all weather	Wellacre High School	1
74	41	all weather	Woodheys School	1
75	44	all weather	Altrincham Grammar School for Girls	1
76	69	all weather	South Trafford College	1
77	76	all weather	Bowdon Cricket, Hockey and Squash Club	1
78	85	all weather	Timperley Sports Club	2
79	80	all weather	Brooklands Sports Club	1
80	7	all	Broad oak High	1

Pitch ID	Site ID	Sport	Site Name	No of Pitches
		weather		
83	15	athletics	Crossford Bridge	1
84	66	athletics	Longford Park	1
85	35	athletics	Timperley Recreation Ground	1
86	43	bowls	Abbotsfield Park	1
87	45	bowls	Ashley Road	1
88	2	bowls	Ashton Park	2
89	14	bowls	Cross Lane Recreation Ground	1
90	52	bowls	Davyhulme Park	2
91	55	bowls	Golden Hill Park	1
92	56	bowls	Hale Road	1
93	58	bowls	Hullard Park	1
94	59	bowls	Humphrey Park	1
95	60	bowls	John Leigh Park	1
96	66	bowls	Longford Park	2
97	67	bowls	Lostock Park	1
98	25	bowls	Moor Nook Park	1
99	28	bowls	Navigation Recreation Ground	1
100	73	bowls	Pickering Lodge	2
101	74	bowls	Priory Street	1
102	75	bowls	Riddings Road	1
103	33	bowls	Stamford Park	2
104	79	bowls	Victoria Park	2
105	38	bowls	Walton Park	2
106	81	bowls	Bowdon Bowling and lawn Tennis Club	1
107	84	bowls	Worthington Park	2
108	70	bowls	Urmston Cricket and Lawn Tennis Club	1
109	62	bowls	Flixton Cricket & Sports Club	1
110	89	bowls	Flixton Conservative Club	1
111	90	bowls	Railway Club (LMRCA)	1
112	91	bowls	Roebuck Bowls Club	1
113	92	bowls	Urmston Liberals Bowls Club	1
114	93	bowls	Flixton Ex-servicemen Club	1
115	94	bowls	Cornhill Road Bowling Green	1
116	95	bowls	Old Trafford Bowling Club	1
117	80	bowls	Brooklands Sports Club	1
118	96	bowls	Leigh Arms Public House	1
119	97	bowls	Sale Conservative Club	1
120	98	bowls	Sale Excelsior WMC	1
121	99	bowls	Trinity Bowls Club	1
122	100	bowls	Weldon Road Bowling Green	1
123	101	bowls	ASE Club	1
124	102	bowls	Altrincham Borough Bowls Club	1
125	103	bowls	Quarry Bank Hotel	1
126	104	bowls	Albert Place Bowling Club	1

Pitch ID	Site ID	Sport	Site Name	No of Pitches
130	107	bowls	Thorley Lane	1
131	108	bowls	Langham Grove	1
134	25	tennis	Moor Nook Park	1
135	20	tennis	Hale Croft Park	1
136	42	tennis	Woodsend Park	1
137	88	tennis	Riddings Road	2
138	63	tennis	Hale Village Tennis Club	3
139	43	tennis	Abbotsfield Park	3
140	2	tennis	Ashton Park	3
141	33	tennis	Stamford Park	3
142	73	tennis	Pickering Lodge	3
143	49	tennis	Claremont Tennis Club	4
144	62	tennis	Flixton Cricket & Sports Club	4
145	82	tennis	Darley Lawn Tennis Club	4
146	52	tennis	Davyhulme Park	4
147	38	tennis	Walton Park	3
148	60	tennis	John Leigh Park	4
149	48	tennis	Hale Barns Tennis Club	5
150	65	tennis	Ashton on Mersey Cricket and Tennis Club	6
151	81	tennis	Bowdon Bowling and lawn Tennis Club	6
152	13	tennis	Sale Cricket & Tennis Club	6
153	85	tennis	Timperley Sports Club	7
154	66	tennis	Longford Park	8
155	71	tennis	Hale Lawn Tennis Club	9
156	87	tennis	David Lloyd Leisure Club	12
157	53	tennis	Bowdon Lawn Tennis Club	13
158	80	tennis	Brooklands Sports Club	14
159	70	tennis	Urmston Cricket and Lawn Tennis Club	6
160	72	tennis	Heyes Grove Tennis Club	6
162	83	tennis	Woodhouse Lane	2
163	117	basketball	Partington Leisure Centre	1
164	42	basketball	Woodsend Park	1
165	118	basketball	Oak Road Car Park	1
166	119	basketball	Old Trafford Youth Centre	1
167	66	basketball	Longford Park	1
168	25	basketball	Moor Nook Park	1
169	2	basketball	Ashton Park	1
170	33	basketball	Stamford Park	1
171	73	basketball	Pickering Lodge	1
172	60	basketball	John Leigh Park	1
174	52	basketball	Davyhulme Park	2
185	124	bowls	United Service Club	1
186	125	bowls	Bulls Head Public House	1
187	126	bowls	Hare and Hounds Public House	1

Pitch ID	Site ID	Sport	Site Name	No of Pitches
188	127	bowls	Linden Avenue Bowling Club	1
189	128	bowls	Navigation Road	1
190	8	bowls	Broadway	1
191	114	tennis	British Airways Sports Ground	3
193	131	tennis	Mercury Way	1
194	8	tennis	Broadway	2
196	79	tennis	Victoria Park	6
197	134	bowls	Downs Bowling Club	1
198	114	bowls	British Airways Sports Ground	1
200	28	MUGA	Navigation Recreation Ground	1
201	135	basketball	Broomwood Play Area	1
202	135	MUGA	Broomwood Play Area	3
203	8	MUGA	Broadway	1
204	14	MUGA	Cross Lane Recreation Ground	1
205	130	MUGA	Gorse Hill Park	1
206	27	MUGA	Nansen Park	1
207	31	MUGA	Seymour Park	2
208	79	basketball	Victoria Park	1
209	79	MUGA	Victoria Park	1
210	136	MUGA	Woodstock Community Park	1
211	137	MUGA	Sale West Recreation Ground	1
212	138	MUGA	Kelsall Street	1
213	139	MUGA	Sale West	1
214	140	MUGA	Baguley Lane	1
216	142	MUGA	Cranford Avenue	1
217	143	MUGA	Tamworth Court	1
222	6	all weather	Blessed Thomas Holford School	1
223	32	cricket	St Brides	1
224	50	football	Clarendon Crescent Recreation Ground	2
227	150	football	Bailey Walk	1
228	28	basketball	Navigation Recreation Ground	1
229	151	bowls	Masonic Hall	1
230	152	bowls	Mersey Valley Sports and Social Club	2
231	153	bowls	Bay Malton Hotel	1
232	154	bowls	Denzel House	1
233	155	bowls	Rear of Metrolink Station, Timperley	1
234	156	bowls	Timperley Methodist Church	1
235	157	bowls	Stonemason's Arms	1

Appendix C - Sport England pitch quality assessment tool

1) Site details form

Non Technical Visual Quality Assessment - Site Details

Site ID	<input type="text"/>		Assessment undertaken by:	<input type="text"/>	
Site Name:	<input type="text"/>				
Street	<input type="text"/>		Date of Assessment:	<input type="text"/>	
Town	<input type="text"/>		Address Detail	<input type="text"/>	
County	<input type="text"/>		Postcode	<input type="text"/>	
Grid Ref: X	<input type="text"/>				
Grid Ref: Y	<input type="text"/>				
Nr of pitch(es):	Football	<input type="text"/>	Cricket	<input type="text"/>	
			Rugby	<input type="text"/>	
			Hockey	<input type="text"/>	
			Others	<input type="text"/>	
			Other	<input type="text"/>	

2) Changing accommodation form

Non Technical Visual Quality Assessment - Changing Accomodation

Site ID

Changing Accom Name

Assessment undertaken by:

Date of Assessment:

Site Name:

Capacity of changing rooms; (Number of teams that can change at any one time in the facility)

Assessment Criteria (please rank each of the following aspects for each pitch with an 'X' in the coloured box to the right of the chosen answer)

Element	Rating					Guidance notes	Comments	Score	As %
	Excellent	Good	Average	Poor	No changing				
About the Changing Accomodation									
Overall Quality	Excellent	Good	Average	Poor	No changing	Perceived quality of changing accommodation: Does it look well maintained, clean, safe etc		0	0%
Evidence of vandalism	None	Yes - some	Yes - lots			Damage to pavillion, graffiti, broken glass etc		0	0%
Showers	Yes - Good	Yes - OK	Yes -poor		No	Are there showers facilities, what is their quality (if known)		0	0%
Toilets	Yes - Good	Yes - OK	Yes -poor		No	Are there toilets - what is their condition (if known)		0	0%
Parking	Good		OK		Poor	Is there enough for circa 20 cars, bays marked out etc		0	0%
Links to public transport	Good		OK		Poor/poor	Is the site close to public transport links, proximity to bus stop, train station, hubs.		0	0%
Security	Good		OK		Poor	Does the accommodation look secure - secure doors/windows, evidence of breakins (may get info from User Surveys)		0	0%
Segregated changing	Yes			No		Are there separate changing rooms for each team - can accommodation be used by both male and female teams at same time		0	0%

Scoring: out of 41

Key:

Over 90%	Excellent
60%-89%	Good
40%-59%	Average
30%-39%	Poor
Less than 30%	Very Poor

Total Score 0 %

3) Individual pitch assessment form

Non Technical Visual Quality Assessment - Individual Pitch Assessment

Pitch Number ID:

Site ID:

Site Name:

Pitch Type:

Background information:

Number of games played on pitch each season:

Number of games cancelled due to unfittness of pitch (excluding frozen pitches):

% of games cancelled per season:

#DIV/0!

Assessment Criteria (please rank each of the following aspects for each pitch with an 'X' in the coloured box to the right of the chosen answer)

Element	Rating					Guidance notes	Comments
	>94%	85-94%	70-84%	60-69%	<60%		
About the winter pitch/cricket field							
Grass cover - entire pitch / cricket field	Excellent	Good	Poor			Where 50%+ grass cover should be given 'Excellent', less than 60% should be considered 'very poor'	
Length of grass	Yes - fully	Yes - fully	No - but adequate			The ideal length of grass will vary between sports	
Size of pitch / cricket field	Yes - fully	Yes - fully	No - but adequate			Does it meet the NGB standard? See pitch sizes table for dimensions	
Adequate safety margins	Flat	Slight	Gentle	Moderate	Severe	Does it meet the NGB standard? See pitch sizes table for dimensions	
Slope of pitch / cricket outfield (gradient and cross fall)	Excellent	Good				Cricket wickets should be flat	
Evenness of pitch / cricket field	None	Yes - some	Poor			Where field is unevenly level = 'Excellent'	
Problem Areas: Evidence of Dog fouling	None	Yes - some	Yes - lots			If no evidence, assume none. May wish to refer to user survey	
Problem Areas: Evidence of Glass/ stones/ litter	None	Yes - some	Yes - lots			If no evidence, assume none. May wish to refer to user survey	
Problem Areas: Evidence of Unofficial use	None	Yes - some	Yes - lots			eg informal, casual use, unbooked use, kids football etc. If no evidence, assume none. May wish to refer to user survey	
Problem Areas: Evidence of Damage to surface	None	Yes - some	Yes - lots			eg golf divots, car-parking on field etc. If no evidence, assume none. May wish to refer to user survey	
Training : Estimated number of hours per week in season	0	1 to 2 hrs	2 to 4 hrs		4+	Training which takes place on the pitch area	
Changing Accommodation							
Changing Accommodation	Yes			No		Is the pitch served by changing facilities	
About the equipment/ wicket...							
Winter Sports Only- Goal Posts - quality	Excellent	Good				Upright, straight, painted, for football, goals are there safe net hoods at both ends. If posts are dismantled after game, or are removable goals, assume 'Excellent'.	
Cricket Only - Is the wicket protected when not used	Yes			No		Is the wicket protected when not in use - can be roped off or covered.	
Line markings - quality	Excellent	Good				e.g. Have they been painted recently, are lines straight and clear etc	
Training area	Yes			No		eg net/ goal/ grids off main body of pitch	

Scoring: Pitch out of 58

Equipment out of 9

TOTAL out of 67

Key: 90%+ An excellent pitch
 64-90% A good pitch
 55-64% An average pitch
 30-54% A below average pitch
 Less than 30 A poor pitch

Total Score ##### %

Appendix D - Example Outdoor Sports Pitch Assessment form showing scores allocated to each rating.

Outdoor Sports Pitch Assessment

Site ID	<input type="text"/>	Data verified by	<input type="text"/>		
Site Name	<input type="text"/>	Date verified	<input type="text"/>		
Street	<input type="text"/>	Address Detail	<input type="text"/>		
Town	<input type="text"/>	Post Code	<input type="text"/>		
X coordinate	<input type="text"/>	Ownership	<input type="text"/>		
Y coordinate	<input type="text"/>	Site Comments	<input type="text"/>		

Changing Accommodation Name	<input type="text"/>
Changing Room Capacity	<input type="text"/>
Changing Room Comments	<input type="text"/>

Assessment Criteria:

Overall Quality	Good	9	Adequate	6	Poor	3	No changing	0
Evidence of vandalism	None	5	Yes - some	2	Yes - lots	0		
Showers	Good	5	Adequate	3	Poor	1	None	0
Toilets	Good	5	Adequate	3	Poor	1	None	0
Parking	Good	3	Adequate	2	Poor	0		
Links to public transport	Good	5	Adequate	2	Poor	0		
Security	Good	5	Adequate	2	Poor	0		
Segregated changing	Yes	3	No	0				

Sport:	<input type="text"/>		
X coordinate	<input type="text"/>	Y coordinate	<input type="text"/>
Pitch Comments	<input type="text"/>		

	Pavilion	Pitches (Senior)	Junior	Mini	9v9	
Number						
Pitch Condition	Excellent	3	Adequate	2	Poor	0
Pitch Markings	Excellent	3	Adequate	2	Poor	0
Equipment	Excellent	3	Adequate	2	Poor	0
Overall	Excellent	3	Adequate	2	Poor	0

Appendix E- List of data sources

Primary data sources

- Trafford Football Sites Providing Community Use – List of sites with breakdown of pitch numbers into Senior, Junior, Mini and 9v9. Sorted by TCLT managed sites, TMBC leased sites and TCLT partner sites (no date).
- Discussion about football, all weather pitches and athletics pitches with Trafford Sports Development (15 January 2008).
- Trafford Sports Club Directory – List by sport type of known clubs in Trafford (16 May 2007).
- Bowls List – Details of bowling greens with number of pavilions and greens (no date).
- Bowling Clubs List – Details of bowling greens with number of pavilions and greens (22 November 2004).
- List of MUGA's and basketball courts from Parks & Countryside Service (11 March 2008).
- Outdoor Sports Facilities Study – Appendix 1 of KKP study (Spring 2004).

Secondary data sources (used for checking for missed sites)

- Previous MapInfo Layer – R:\GIS\Maproot\Environmental Services IBU\Parks & Countryside\Greenspace 2004 mapping\outdoors_sports_fac.TAB
- Local Land & Property Gazeteer (LLPG) – Accessed via the intranet with searches done on bowling, tennis and cricket.
- OS MasterMap Cartographic Text – This is the text that appears on MasterMap labeling land coverage e.g. "Tennis Court". Points plotted for the following texts: Tennis, Tennis Court, Bowling, Bowling Green and Cricket Ground.